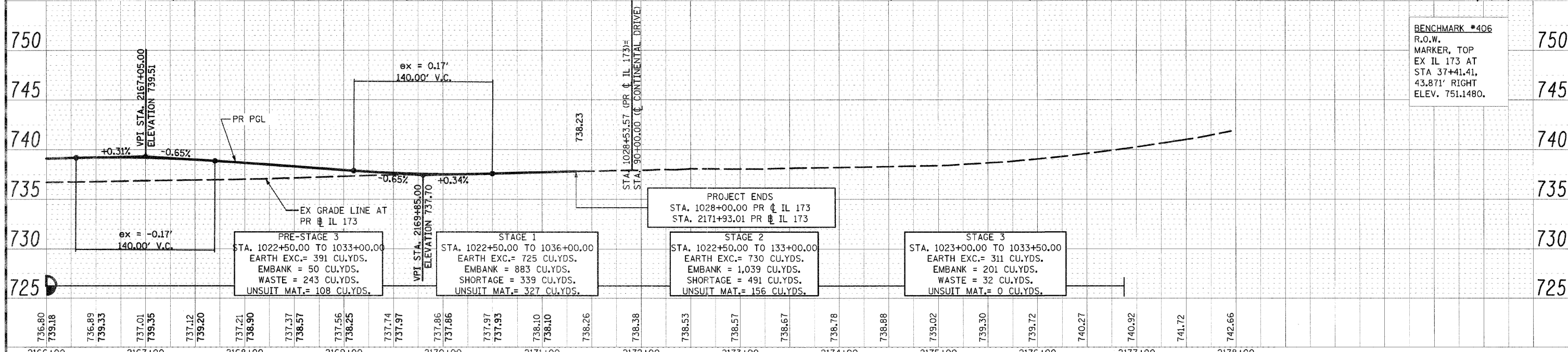
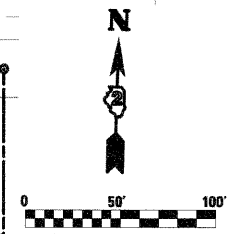
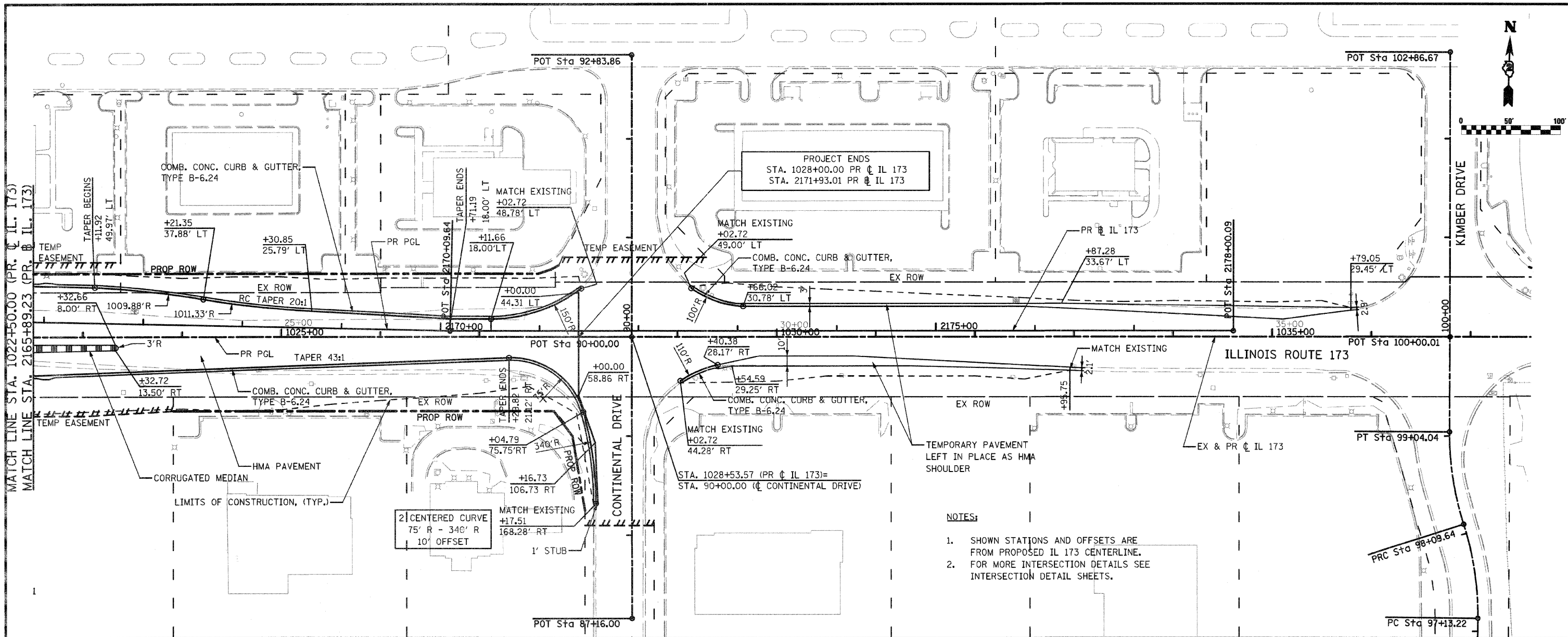


DATE	
BY	
REVISION	
NO.	
DESCRIPTION	

DATE	
BY	
REVISION	
NO.	
DESCRIPTION	



BENCHMARK #406
R.O.W.
MARKER, TOP
EX IL 173 AT
STA 37+41.41,
43.871' RIGHT
ELEV. 751.1480.

- NOTES:**
1. SHOWN STATIONS AND OFFSETS ARE FROM PROPOSED IL 173 CENTERLINE.
 2. FOR MORE INTERSECTION DETAILS SEE INTERSECTION DETAIL SHEETS.

FILE NAME = 0264987-shr-plnprf-04.dgn	USER NAME = 320209071	DESIGNED - LOM	REVISED -	STATE OF ILLINOIS DEPARTMENT OF TRANSPORTATION	PLAN AND PROFILE ILLINOIS ROUTE 173				F.A.P. RTE. 303	SECTION 129K-1	COUNTY WINNEBAGO	TOTAL SHEETS 401	SHEET NO. 64
PLOT SCALE = 1/8" = 100.0000' / IN.		DRAWN - MG	REVISED -		SCALE: SHEET NO. OF SHEETS STA. 1022+50.00 TO STA. 1037+50.00				CONTRACT NO. 64987				
PLOT DATE = 3/16/2011		CHECKED - PDK	REVISED -		FED. ROAD DIST. NO. 2 ILLINOIS FED. AID PROJECT								
		DATE - 03-16-2011	REVISED -										