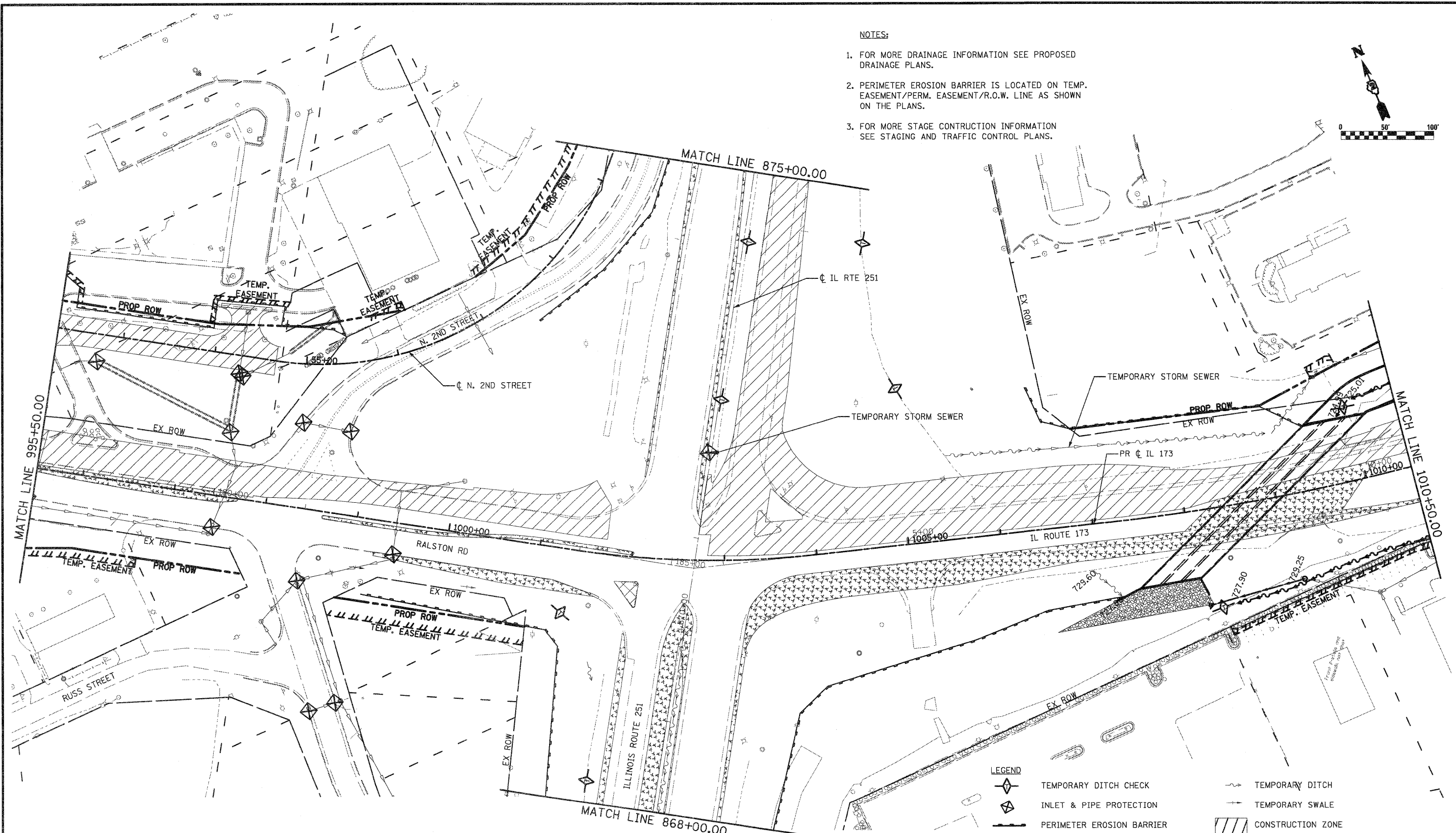
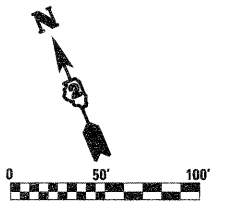


- NOTES:**
1. FOR MORE DRAINAGE INFORMATION SEE PROPOSED DRAINAGE PLANS.
 2. PERIMETER EROSION BARRIER IS LOCATED ON TEMP. EASEMENT/PERM. EASEMENT/R.O.W. LINE AS SHOWN ON THE PLANS.
 3. FOR MORE STAGE CONSTRUCTION INFORMATION SEE STAGING AND TRAFFIC CONTROL PLANS.



LEGEND

	TEMPORARY DITCH CHECK		TEMPORARY DITCH
	INLET & PIPE PROTECTION		TEMPORARY SWALE
	PERIMETER EROSION BARRIER		CONSTRUCTION ZONE
	REMOVE EXISTING CLOSED LID FROM TYPE 1 FRAME AND REPLACE W/ OPEN LID, ADJUST RIM TO GRADE		TEMPORARY PAVEMENT
	REMOVE TOP OF EXISTING INLET AND COVER W/ STEEL PLATE		TEMPORARY PAVEMENT FROM PREVIOUS STAGE
	EXISTING STORM SEWER		PERMANENT DITCH
			TEMPORARY/PROPOSED STORM SEWER

FILE NAME = 0264987-shtreros1A2.dgn	USER NAME = 3292098971	DESIGNED - LOM	REVISED -	STATE OF ILLINOIS DEPARTMENT OF TRANSPORTATION	STORM WATER POLLUTION PREVENTION PLAN & TEMPORARY DRAINAGE STAGE 1A			F.A.P. RTE. 303	SECTION 129K-1	COUNTY WINNEBAGO	TOTAL SHEETS 401	SHEET NO. 170
PLOT SCALE = 100.0000' / IN.	CHECKED - PDK	DATE - 01-19-2011	REVISED -		SCALE:	SHEET NO. OF SHEETS	STA. 995+50.00 TO STA. 1010+50.00	FED. ROAD DIST. NO. 2 ILLINOIS FED. AID PROJECT				
PLOT DATE = 1/18/2011	DATE - 01-19-2011	REVISED -	REVISED -		CONTRACT NO. 64987							