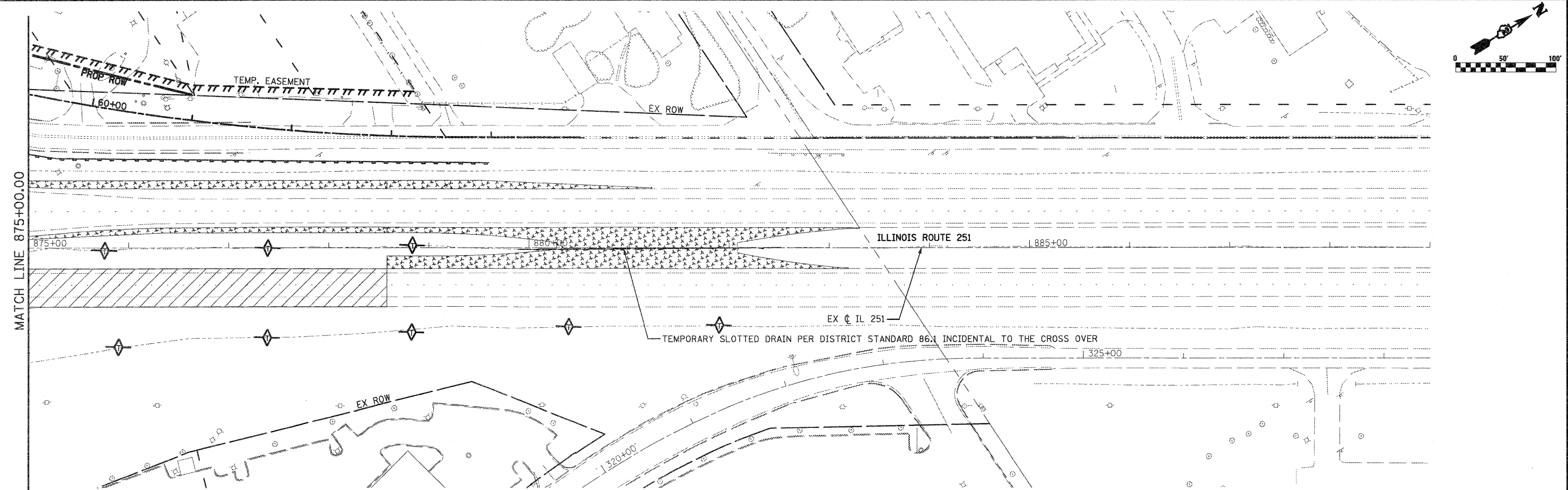
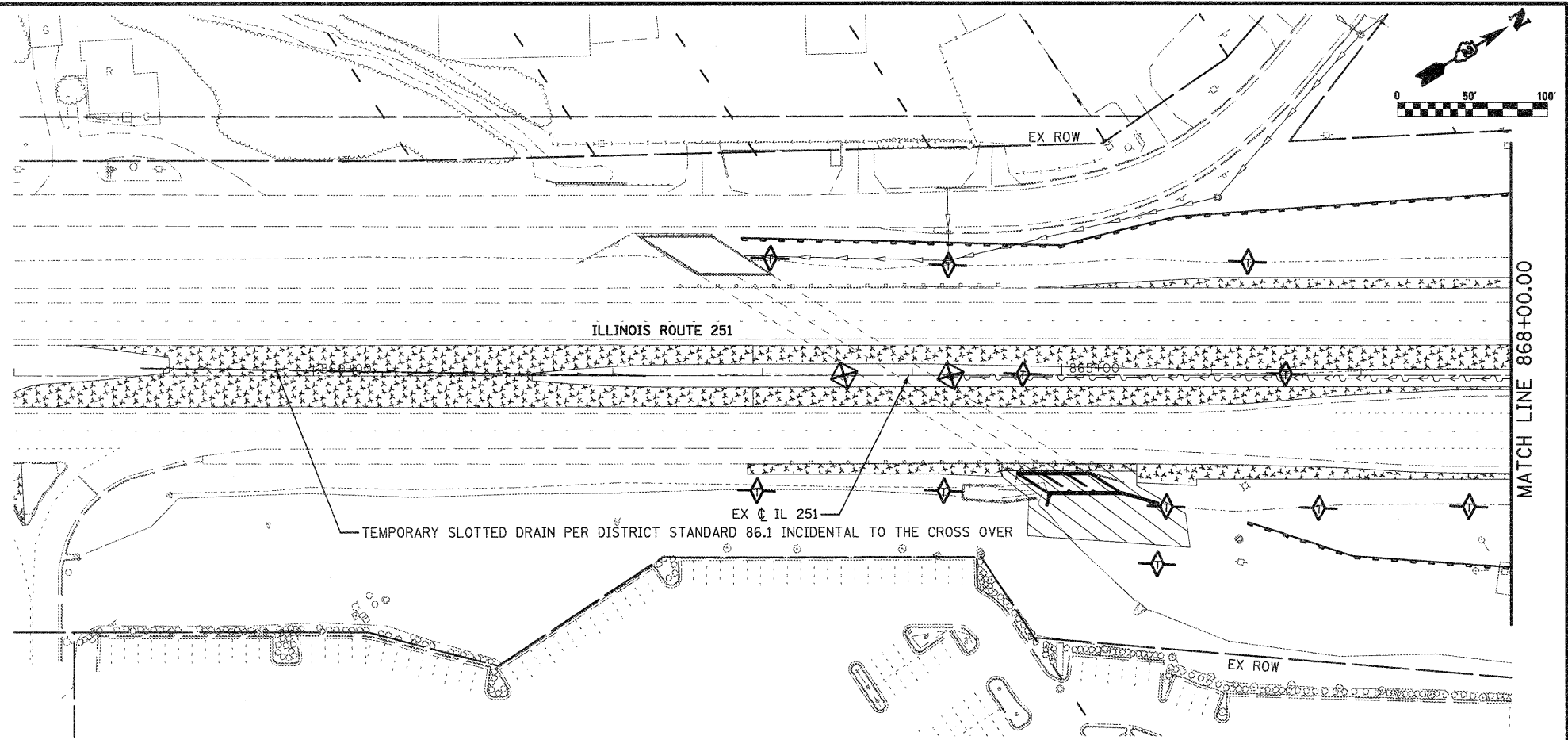


- LEGEND**
- ◆ TEMPORARY DITCH CHECK
 - ◇ INLET & PIPE PROTECTION
 - ▬ PERIMETER EROSION BARRIER
 - ① REMOVE EXISTING CLOSED LID FROM TYPE 1 FRAME AND REPLACE W/ OPEN LID, ADJUST RIM TO GRADE
 - ② REMOVE TOP OF EXISTING INLET AND COVER W/ STEEL PLATE
 - ▬ EXISTING STORM SEWER
 - ~ TEMPORARY DITCH
 - +— TEMPORARY SWALE
 - ▨ CONSTRUCTION ZONE
 - ▩ TEMPORARY PAVEMENT
 - ▩ TEMPORARY PAVEMENT FROM PREVIOUS STAGE
 - ~ PERMANENT DITCH
 - ▬ TEMPORARY/PROPOSED STORM SEWER

NOTES:

1. FOR MORE DRAINAGE INFORMATION SEE PROPOSED DRAINAGE PLANS.
2. PERIMETER EROSION BARRIER IS LOCATED ON TEMP. EASEMENT/PERM. EASEMENT/R.O.W. LINE AS SHOWN ON THE PLANS.
3. FOR MORE STAGE CONSTRUCTION INFORMATION SEE STAGING AND TRAFFIC CONTROL PLANS.



FILE NAME = D264987-sh1-eros1A5.dgn

USER NAME = 3282870971
 PLOT SCALE = 1/8" = 100.0000' / IN.
 PLOT DATE = 1/18/2011

DESIGNED - LOM
 DRAWN - MD
 CHECKED - PDK
 DATE - 01-19-2011

REVISED -
 REVISED -
 REVISED -
 REVISED -

**STATE OF ILLINOIS
 DEPARTMENT OF TRANSPORTATION**

**STORM WATER POLLUTION PREVENTION PLAN
 & TEMPORARY DRAINAGE**

SCALE: SHEET NO. OF SHEETS STA. 875+00.00 TO STA. 889+00.00

F.A.P. RTE.	SECTION	COUNTY	TOTAL SHEETS	SHEET NO.
303	129K-1	WINNEBAGO	401	173
CONTRACT NO. 64987				
FED. ROAD DIST. NO. 2 ILLINOIS FED. AID PROJECT				