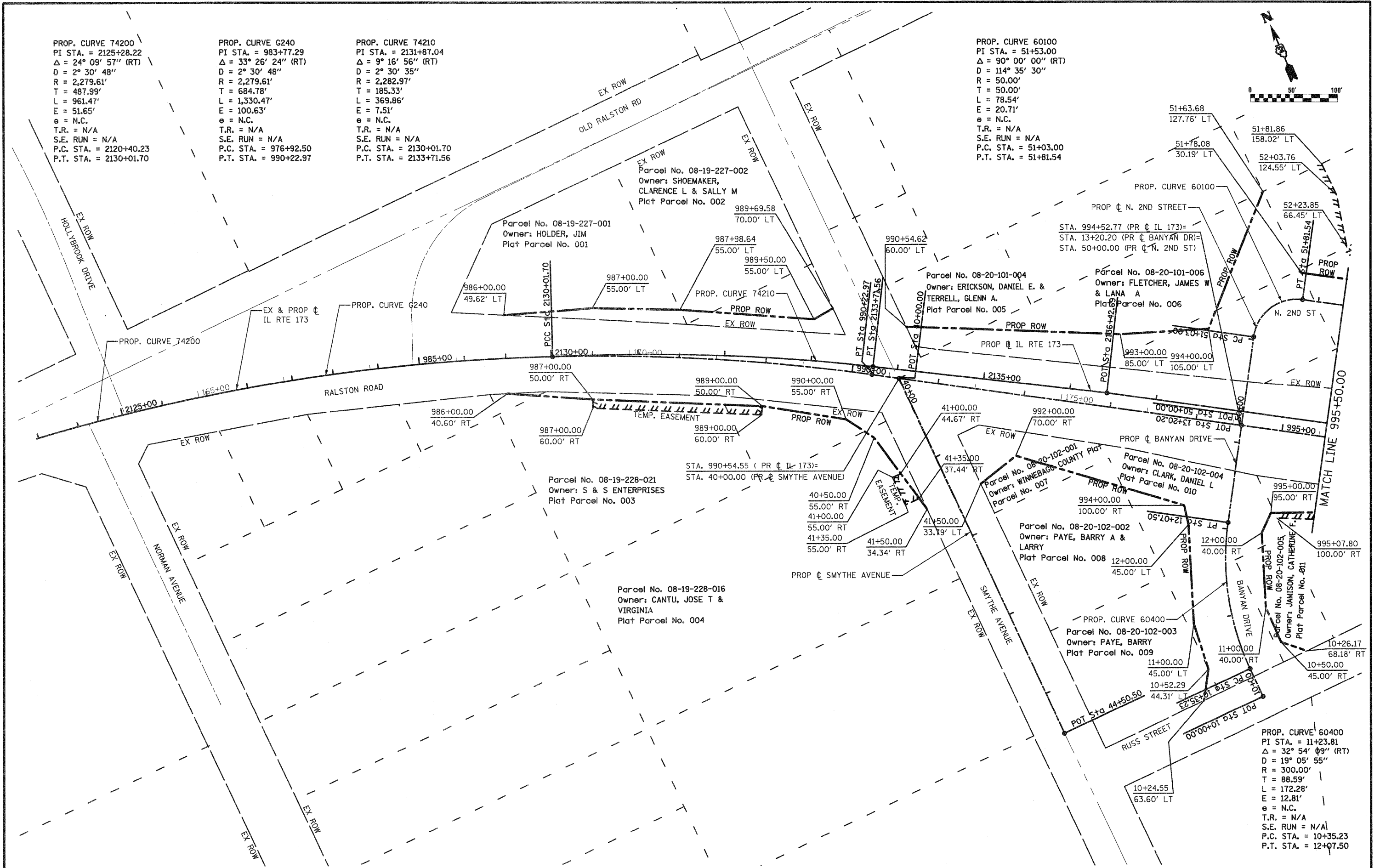
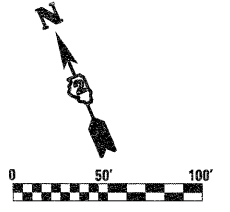


PROP. CURVE 74200
 PI STA. = 2125+28.22
 $\Delta = 24^\circ 09' 57''$ (RT)
 $D = 2^\circ 30' 48''$
 $R = 2,279.61'$
 $T = 487.99'$
 $L = 961.47'$
 $E = 51.65'$
 $e = N.C.$
 $T.R. = N/A$
 $S.E. RUN = N/A$
 $P.C. STA. = 2120+40.23$
 $P.T. STA. = 2130+01.70$

PROP. CURVE G240
 PI STA. = 983+77.29
 $\Delta = 33^\circ 26' 24''$ (RT)
 $D = 2^\circ 30' 48''$
 $R = 2,279.61'$
 $T = 684.78'$
 $L = 1,330.47'$
 $E = 100.63'$
 $e = N.C.$
 $T.R. = N/A$
 $S.E. RUN = N/A$
 $P.C. STA. = 976+92.50$
 $P.T. STA. = 990+22.97$

PROP. CURVE 74210
 PI STA. = 2131+87.04
 $\Delta = 9^\circ 16' 56''$ (RT)
 $D = 2^\circ 30' 35''$
 $R = 2,282.97'$
 $T = 185.33'$
 $L = 369.86'$
 $E = 7.51'$
 $e = N.C.$
 $T.R. = N/A$
 $S.E. RUN = N/A$
 $P.C. STA. = 2130+01.70$
 $P.T. STA. = 2133+71.56$

PROP. CURVE 60100
 PI STA. = 51+53.00
 $\Delta = 90^\circ 00' 00''$ (RT)
 $D = 114^\circ 35' 30''$
 $R = 50.00'$
 $T = 50.00'$
 $L = 78.54'$
 $E = 20.71'$
 $e = N.C.$
 $T.R. = N/A$
 $S.E. RUN = N/A$
 $P.C. STA. = 51+03.00$
 $P.T. STA. = 51+81.54$



PROP. CURVE 60400
 PI STA. = 11+23.81
 $\Delta = 32^\circ 54' 09''$ (RT)
 $D = 19^\circ 05' 55''$
 $R = 300.00'$
 $T = 88.59'$
 $L = 172.28'$
 $E = 12.81'$
 $e = N.C.$
 $T.R. = N/A$
 $S.E. RUN = N/A$
 $P.C. STA. = 10+35.23$
 $P.T. STA. = 12+07.50$

FILE NAME = D264987-shr-row-01.dgn	USER NAME = 328280971	DESIGNED - LOM	REVISED -	STATE OF ILLINOIS DEPARTMENT OF TRANSPORTATION	RIGHT OF WAY PLAN RALSTON ROAD		F.A.P. RTE. 303	SECTION 129K-1	COUNTY WINNEBAGO	TOTAL SHEETS 401	SHEET NO. 225
	PLOT SCALE = 1/8" = 100.0000' / IN.	DRAWN - MD	REVISED -		SCALE:	SHEET NO. OF SHEETS	STA. 980+50.00 TO STA. 995+50.00	FED. ROAD DIST. NO. 2	ILLINOIS	FED. AID PROJECT	CONTRACT NO. 64987
	PLOT DATE = 1/18/2011	CHECKED - PDK	REVISED -								
		DATE - 01-19-2011	REVISED -								