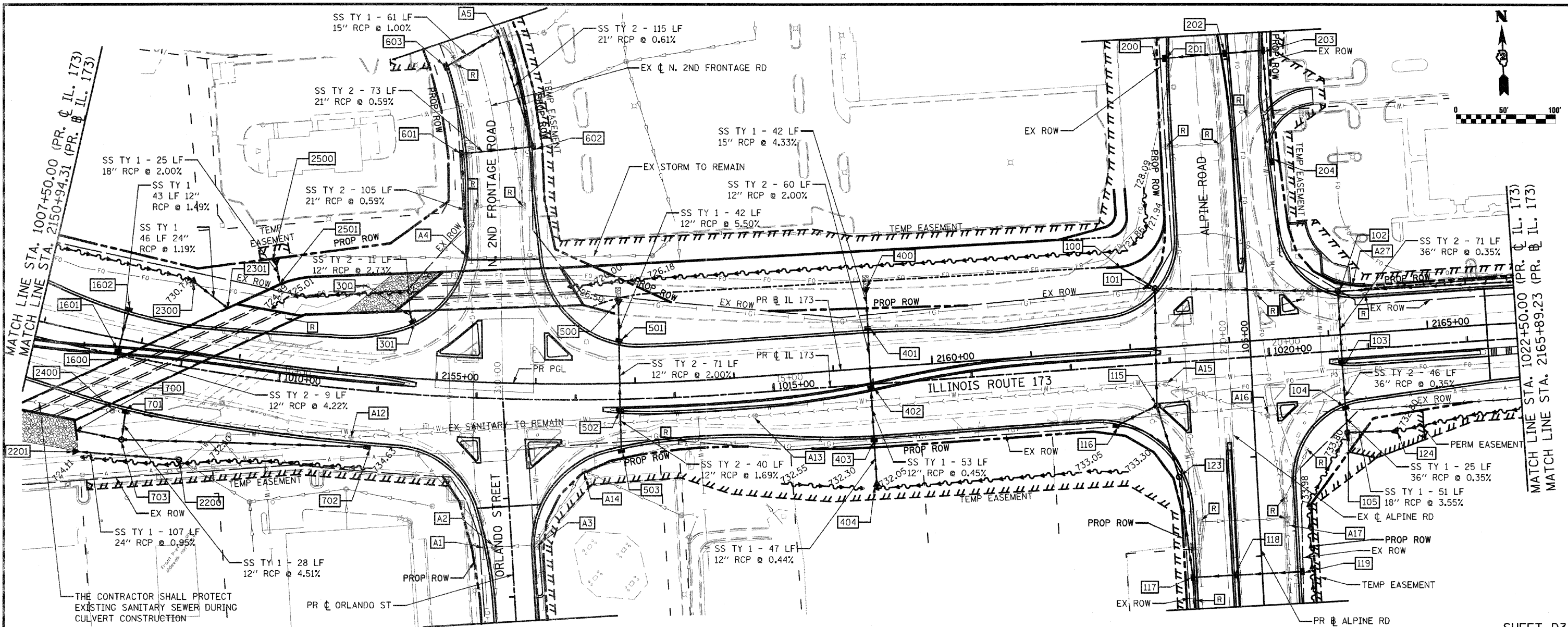
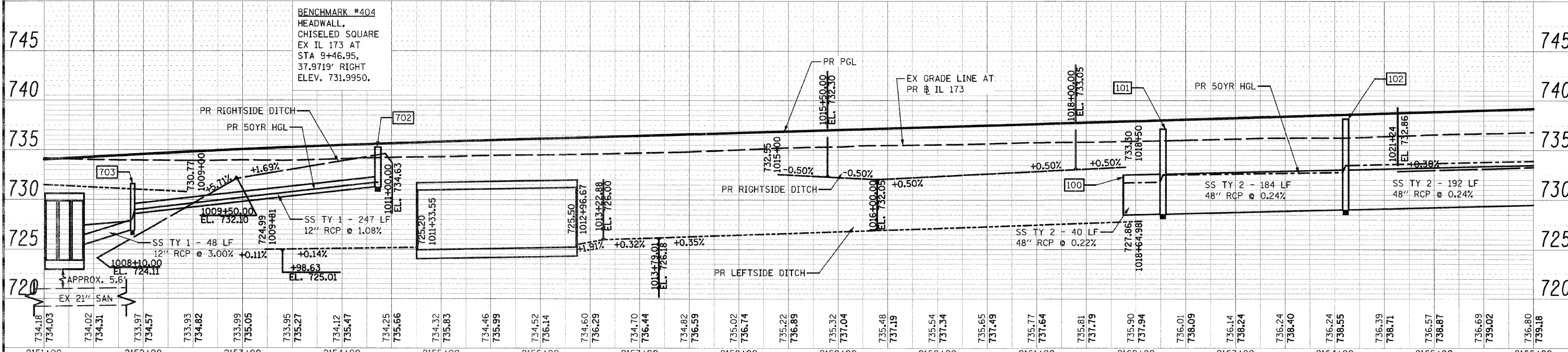


DATE	
BY	
SUBMITTED	
PLANNED	
NOTED	
CHECKED	
NO.	
FILE NAME	

DATE	
BY	
SURVEYED	
PLANNED	
NOTED	
CHECKED	
NO.	
FILE NAME	



THE CONTRACTOR SHALL PROTECT EXISTING SANITARY SEWER DURING CULVERT CONSTRUCTION



SHEET D3

FILE NAME = 0264987-shd-drain-03.dgn	USER NAME = 320209071	DESIGNED - LOM	REVISED -	<b>STATE OF ILLINOIS</b> <b>DEPARTMENT OF TRANSPORTATION</b>	<b>DRAINAGE AND UTILITY PLAN</b> <b>ILLINOIS ROUTE 173</b>	F.A.P. R.T.E. = 303	SECTION = 129K-1	COUNTY = WINNEBAGO	TOTAL SHEETS = 401	SHEET NO. = 233	
PLOT SCALE = 1/8" = 1' / IN.	PLOT DATE = 3/16/2011	DRAWN - MG	REVISED -			SCALE:	SHEET NO. OF SHEETS	STA. 1007+50.00 TO STA. 1022+50.00	FED. ROAD DIST. NO. 2	ILLINOIS FED. AID PROJECT	CONTRACT NO. 64987
		CHECKED - PDK	REVISED -								
		DATE = 03-16-2011	REVISED -								