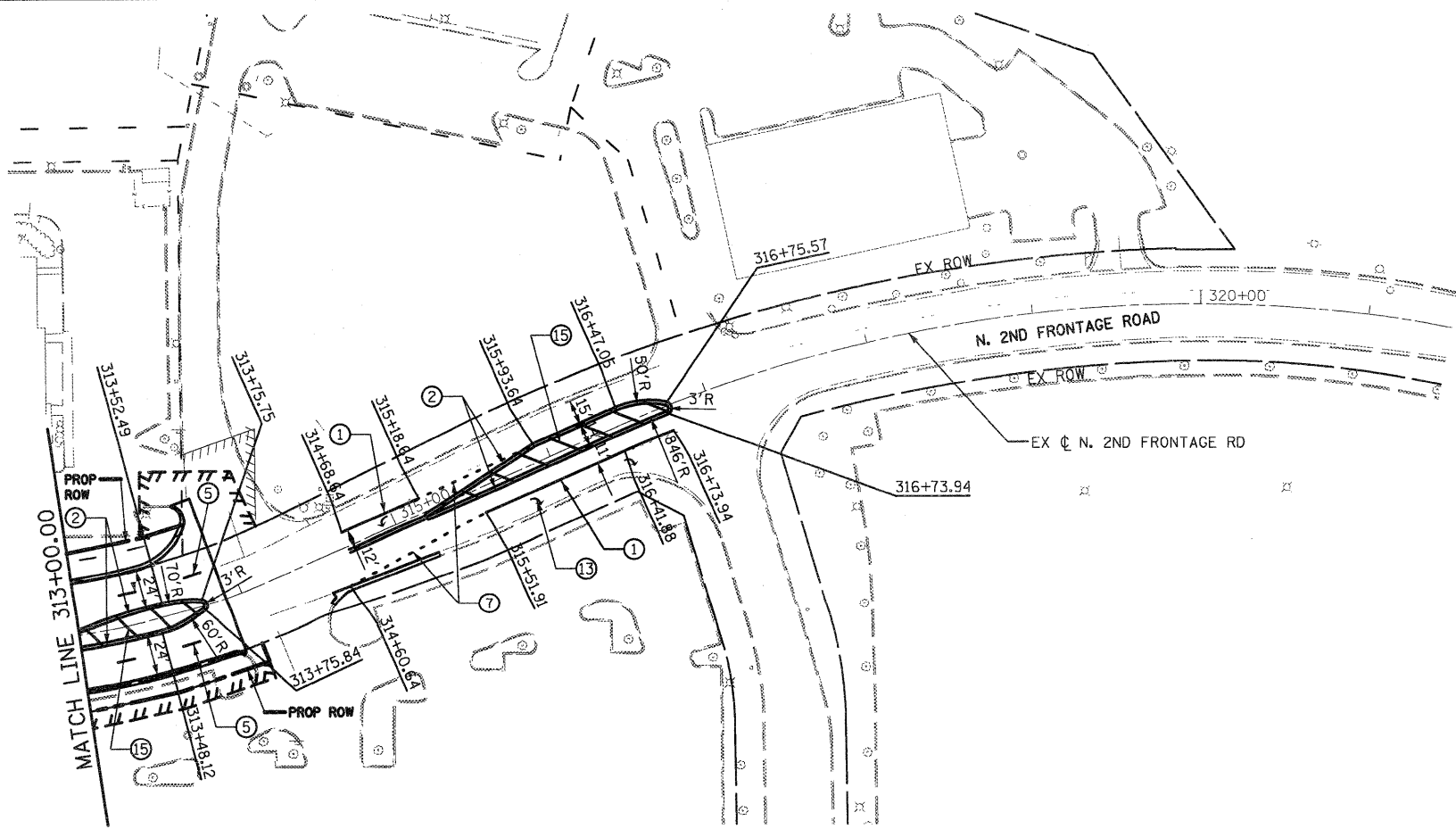
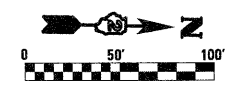


- LEGEND:**
- ① 8" SOLID WHITE LANE LINE
 - ② 4" SOLID YELLOW DOUBLE CENTERLINE
 - ③ 12" SOLID WHITE DIAGONALS, 30' C-C
 - ④ 12" SOLID YELLOW DIAGONALS, 30' C-C
 - ⑤ 6" WHITE 30' SKIP 10' DASH
 - ⑥ 24" SOLID WHITE STOP BAR
 - ⑦ 8" WHITE 6' SKIP 2' DASH
 - ⑧ NOT USED
 - ⑨ ONE WAY CRYSTAL MARKER
 - ⑩ 4" YELLOW 30' SKIP 10' DASH
 - ⑪ 4" SOLID YELLOW EDGE LINE
 - ⑫ 4" SOLID WHITE EDGE LINE
 - ⑬ PAVEMENT MARKING SYMBOL
 - ⑭ 12" SOLID WHITE DIAGONALS, 8' C-C
 - ⑮ 12" SOLID YELLOW DIAGONALS, 20' C-C
 - ⑯ 12" SOLID WHITE DIAGONALS, 10' C-C

NOTE:
 1. FOR MORE INFORMATION SEE DISTRICT 2 STANDARDS 41.1 AND 93.4.



FILE NAME =
 0264987-sh1-pmk-06.dgn

USER NAME = 3202090971

DESIGNED - LOM
 DRAWN - MD

REVISIONS:
 REVISION NO. DATE BY

**STATE OF ILLINOIS
 DEPARTMENT OF TRANSPORTATION**

PAVEMENT MARKING PLAN			
ORLANDO ST / N. 2ND FRONTAGE RD			
SCALE:	SHEET NO.	OF SHEETS	STA. 70+50.00 TO STA. 78+00.00
			315+00.00 321+50.00

F.A.P. RTE.	SECTION	COUNTY	TOTAL SHEETS	SHEET NO.
303	129K-1	WINNEBAGO	401	254
CONTRACT NO. 64987				

FED. ROAD DIST. NO. 2 ILLINOIS FED. AID PROJECT