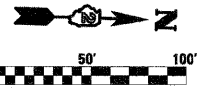
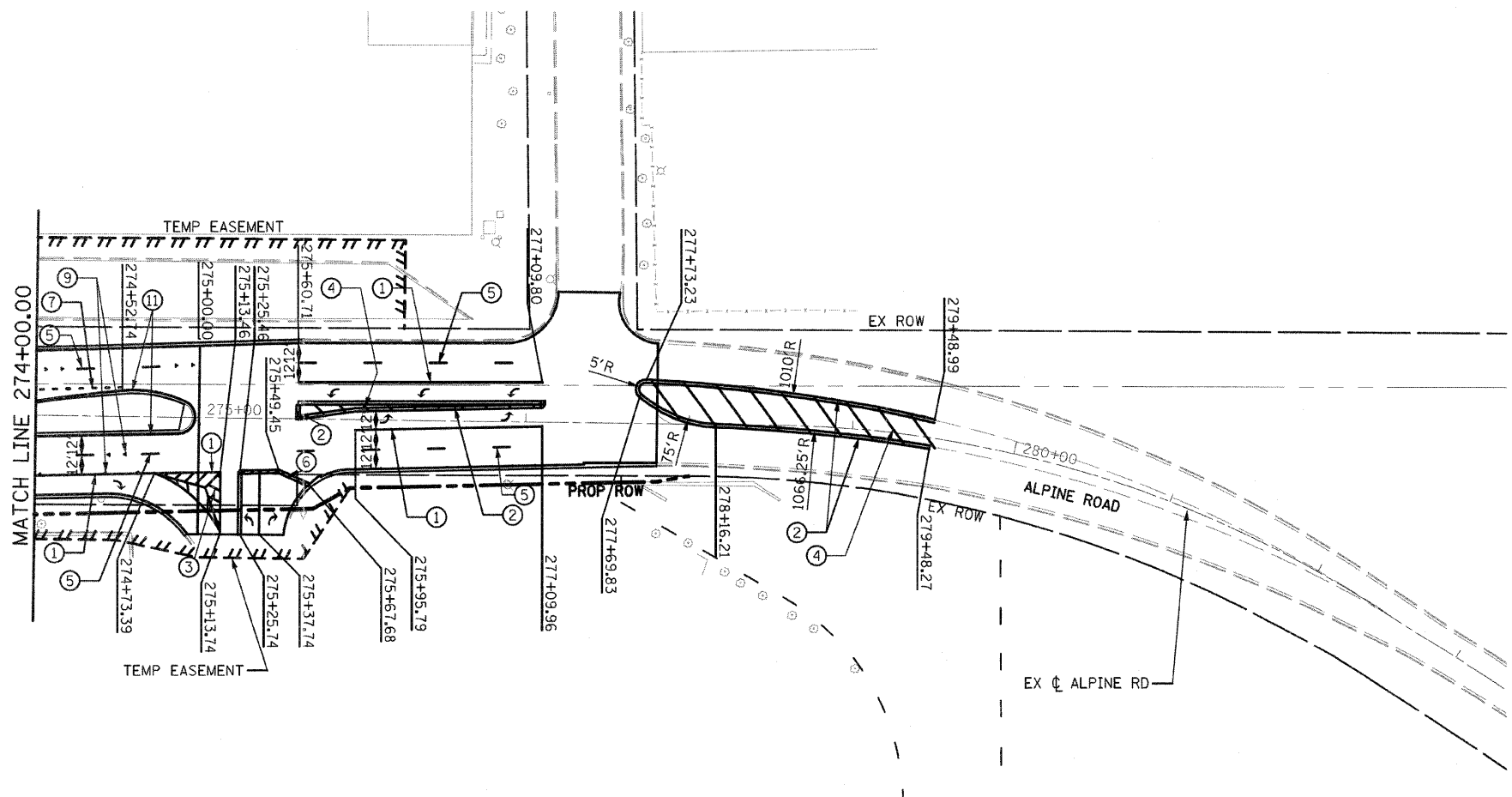
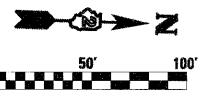
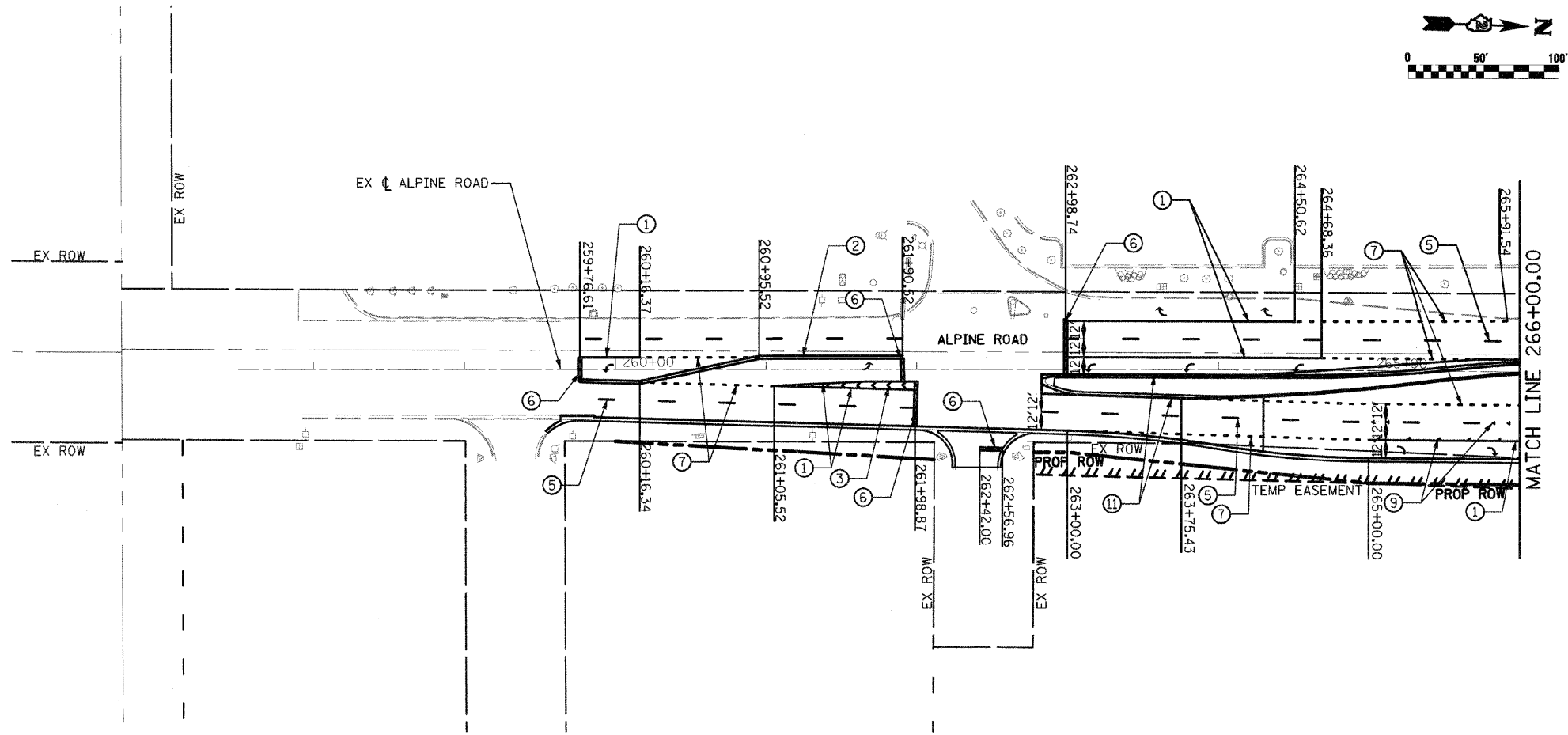


LEGEND:

- ① 8" SOLID WHITE LANE LINE
- ② 4" SOLID YELLOW DOUBLE CENTERLINE
- ③ 12" SOLID WHITE DIAGONALS, 30' C-C
- ④ 12" SOLID YELLOW DIAGONALS, 30' C-C
- ⑤ 6" WHITE 30' SKIP 10' DASH
- ⑥ 24" SOLID WHITE STOP BAR
- ⑦ 8" WHITE 6' SKIP 2' DASH
- ⑧ NOT USED
- ⑨ ONE WAY CRYSTAL MARKER
- ⑩ 4" YELLOW 30' SKIP 10' DASH
- ⑪ 4" SOLID YELLOW EDGE LINE
- ⑫ 4" SOLID WHITE EDGE LINE
- ⑬ PAVEMENT MARKING SYMBOL
- ⑭ 12" SOLID WHITE DIAGONALS, 8' C-C
- ⑮ 12" SOLID YELLOW DIAGONALS, 20' C-C
- ⑯ 12" SOLID WHITE DIAGONALS, 10' C-C

NOTE:

1. FOR MORE INFORMATION SEE DISTRICT 2 STANDARDS 41.1 AND 93.4.



FILE NAME =	USER NAME = 3282898171
D264987-shl-pmk-07.dgn	

DESIGNED	LOM
DRAWN	MD
CHECKED	PDK
DATE	03-16-2011

REVIS	-
REVIS	-
REVIS	-
REVIS	-

STATE OF ILLINOIS
DEPARTMENT OF TRANSPORTATION

PAVEMENT MARKING PLAN	
ALPINE ROAD	
SCALE:	SHEET NO. OF SHEETS STA. 257+50.00 TO STA. 266+00.00
	274+00.00 281+00.00

F.A.P. RTE.	SECTION	COUNTY	TOTAL SHEETS	SHEET NO.
303	129K-1	WINNEBAGO	401	255
CONTRACT NO. 64987				

FED. ROAD DIST. NO. 2 ILLINOIS FED. AID PROJECT				
---	--	--	--	--