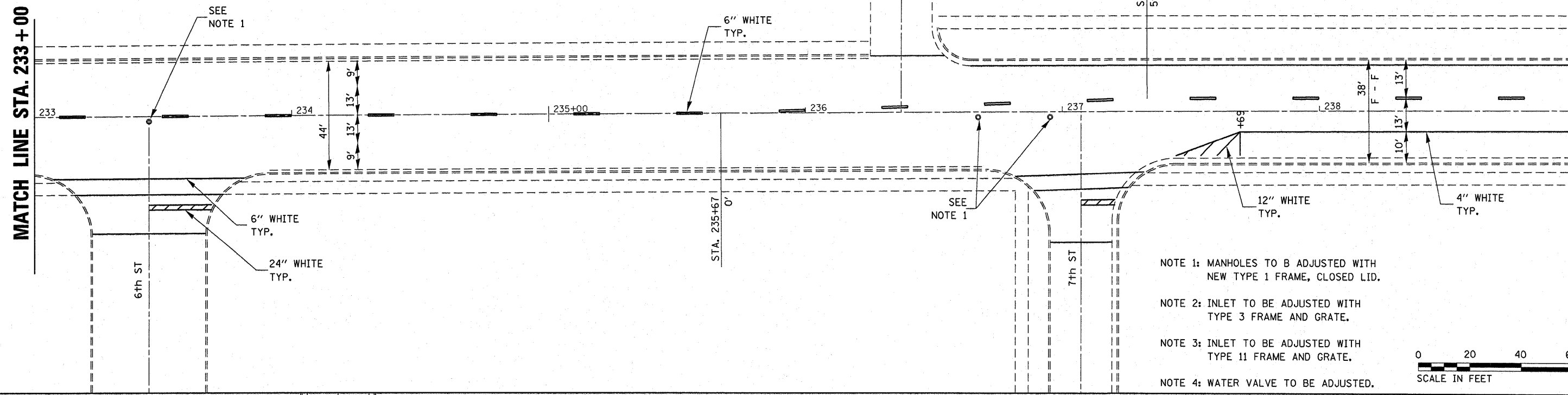


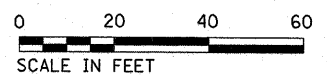


MATCH LINE STA. 233+00

MATCH LINE STA. 239+00

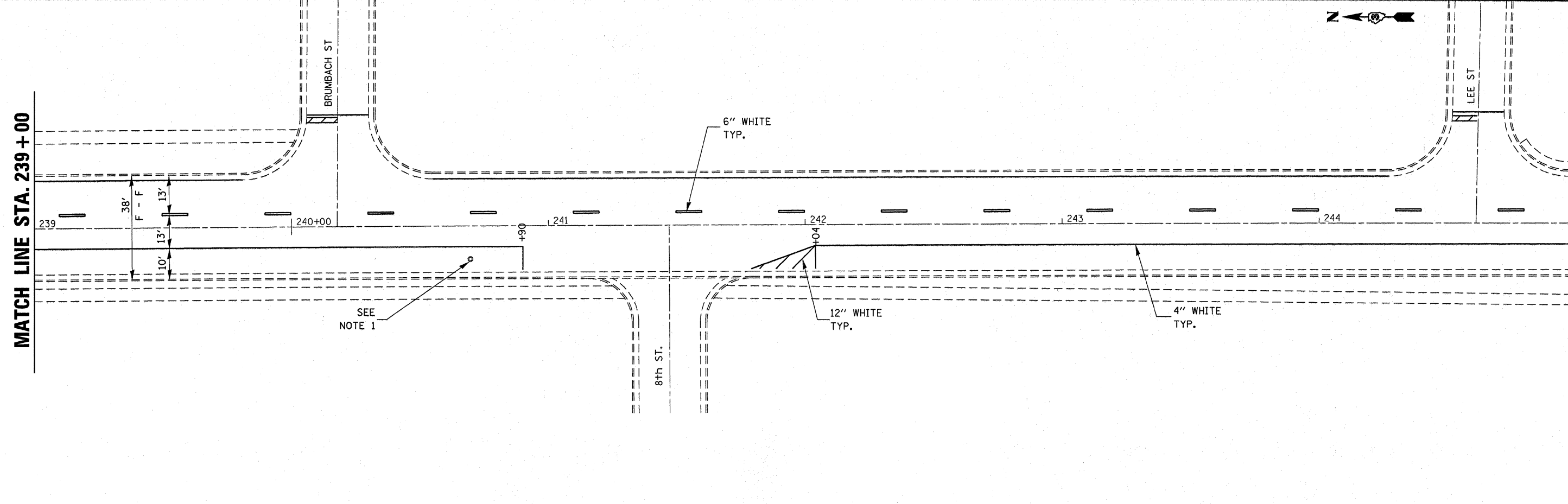


- NOTE 1: MANHOLES TO B ADJUSTED WITH NEW TYPE 1 FRAME, CLOSED LID.
- NOTE 2: INLET TO BE ADJUSTED WITH TYPE 3 FRAME AND GRATE.
- NOTE 3: INLET TO BE ADJUSTED WITH TYPE 11 FRAME AND GRATE.
- NOTE 4: WATER VALVE TO BE ADJUSTED.



MATCH LINE STA. 239+00

MATCH LINE STA. 245+00



FILE NAME =	USER NAME = wosilewskimw	DESIGNED -	REVISED -	STATE OF ILLINOIS DEPARTMENT OF TRANSPORTATION	IL. RTE. 23 - BLOOMINGTON ST. PAVEMENT MARKING	F.A.P. RTE.	SECTION	COUNTY	TOTAL SHEETS	SHEET NO.	
c:\pw_work\pwidot\wosilewskimw\d0248423	0366839-aht-details.DGN	DRAWN -	REVISED -			68	(5Z,99,100)RS-3, (3TR)RS-2	*	50	28	
	PLOT SCALE = 20.0000' / IN.	CHECKED -	REVISED -			* LASALLE & LIVINGSTON		CONTRACT NO. 66839			
	PLOT DATE = Mar 28, 2011 - 07:25:30 AM	DATE -	REVISED -			SCALE: SHEET NO. OF SHEETS STA. 233+00 TO STA. 245+00		ILLINOIS FED. AID PROJECT			