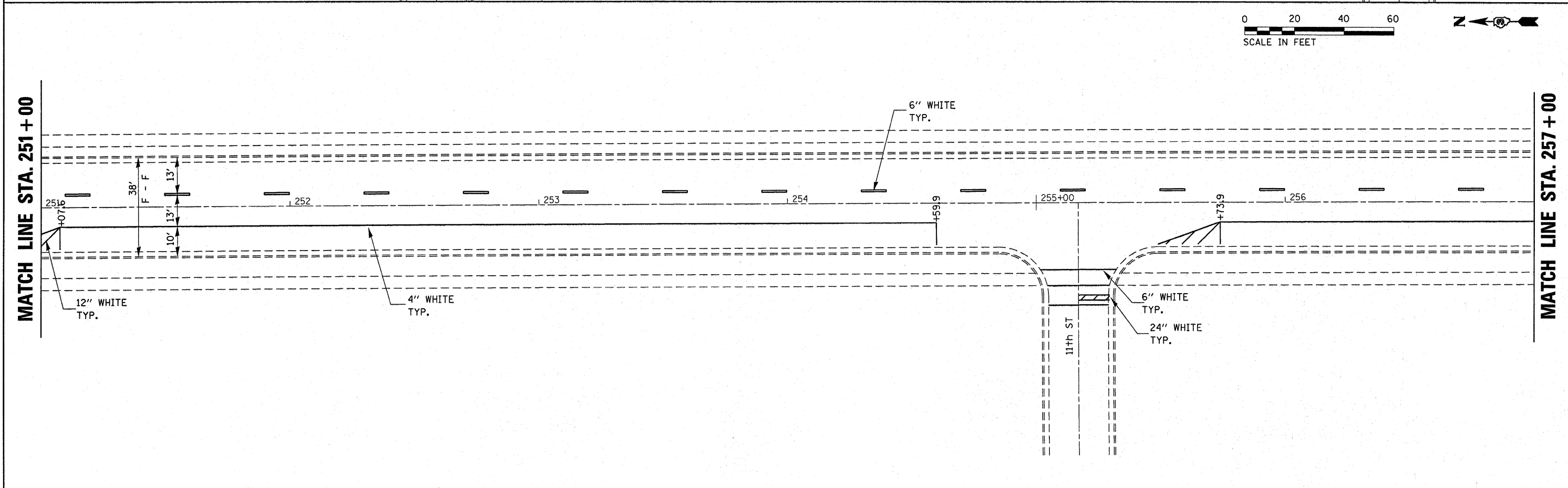
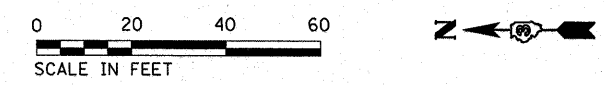


- NOTE 1: MANHOLES TO B ADJUSTED WITH NEW TYPE 1 FRAME, CLOSED LID.
- NOTE 2: INLET TO BE ADJUSTED WITH TYPE 3 FRAME AND GRATE.
- NOTE 3: INLET TO BE ADJUSTED WITH TYPE 11 FRAME AND GRATE.
- NOTE 4: WATER VALVE TO BE ADJUSTED.



FILE NAME = c:\pwork\pwork\wosilewsk\m\0248423	USER NAME = wosilewsk\m	DESIGNED -	REVISED -	STATE OF ILLINOIS DEPARTMENT OF TRANSPORTATION	IL. RTE. 23 - BLOOMINGTON ST. PAVEMENT MARKING			F.A.P. RTE.	SECTION	COUNTY	TOTAL SHEETS	SHEET NO.
	0366839-shd-details.DGN	DRAWN -	REVISED -					68	(5Z,99,100)RS-3, (37)RS-2	*	50	29
	PLOT SCALE = 20.0000' / IN.	CHECKED -	REVISED -					* LASALLE & LIVINGSTON		CONTRACT NO. 66839		
PLOT DATE = Mar 28, 2011 - 07:25:24 AM	DATE -	REVISED -	SCALE:	SHEET NO.	OF	SHEETS	STA. 245+00	TO STA. 263+00	ILLINOIS FED. AID PROJECT			