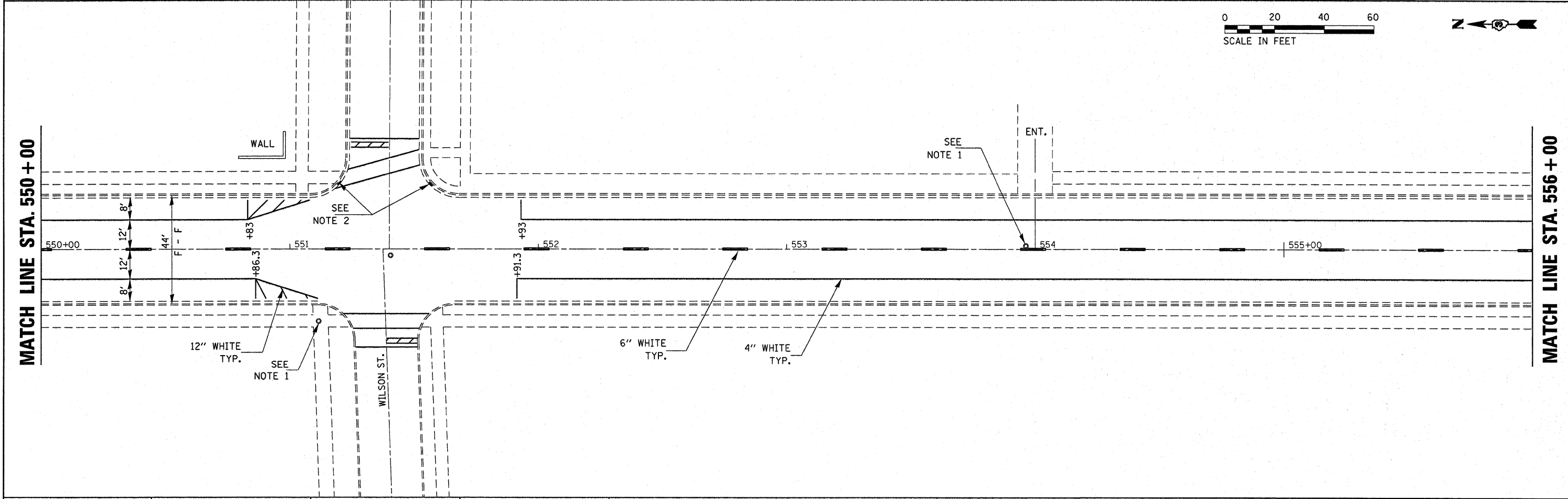
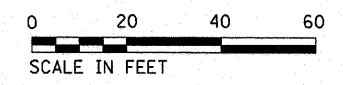


- NOTE 1: MANHOLES TO BE ADJUSTED WITH NEW TYPE 1 FRAME, CLOSED LID.
- NOTE 2: INLET TO BE ADJUSTED WITH TYPE 3 FRAME AND GRATE.
- NOTE 3: INLET TO BE ADJUSTED WITH TYPE 11 FRAME AND GRATE.
- NOTE 4: WATER VALVE TO BE ADJUSTED.



FILE NAME =	USER NAME = wosilewskim	DESIGNED -	REVISED -	STATE OF ILLINOIS DEPARTMENT OF TRANSPORTATION	IL. RTE. 23 - PARK ST. PAVEMENT MARKING				F.A.P. RTE.	SECTION	COUNTY	TOTAL SHEETS	SHEET NO.
c:\pwork\pwork\wosilewskim\d0248423	D366839-ahd-deta1a.DGN	DRAWN -	REVISED -						68	(52,99,100)RS-3, (37)RS-2	*	50	38
	PLOT SCALE = 20.0000' / IN.	CHECKED -	REVISED -		SCALE:				SHEET NO.	OF SHEETS	STA.	TO STA.	CONTRACT NO. 66839
	PLOT DATE = Mar 25, 2011 - 03:25:04 PM	DATE -	REVISED -										ILLINOIS FED. AID PROJECT