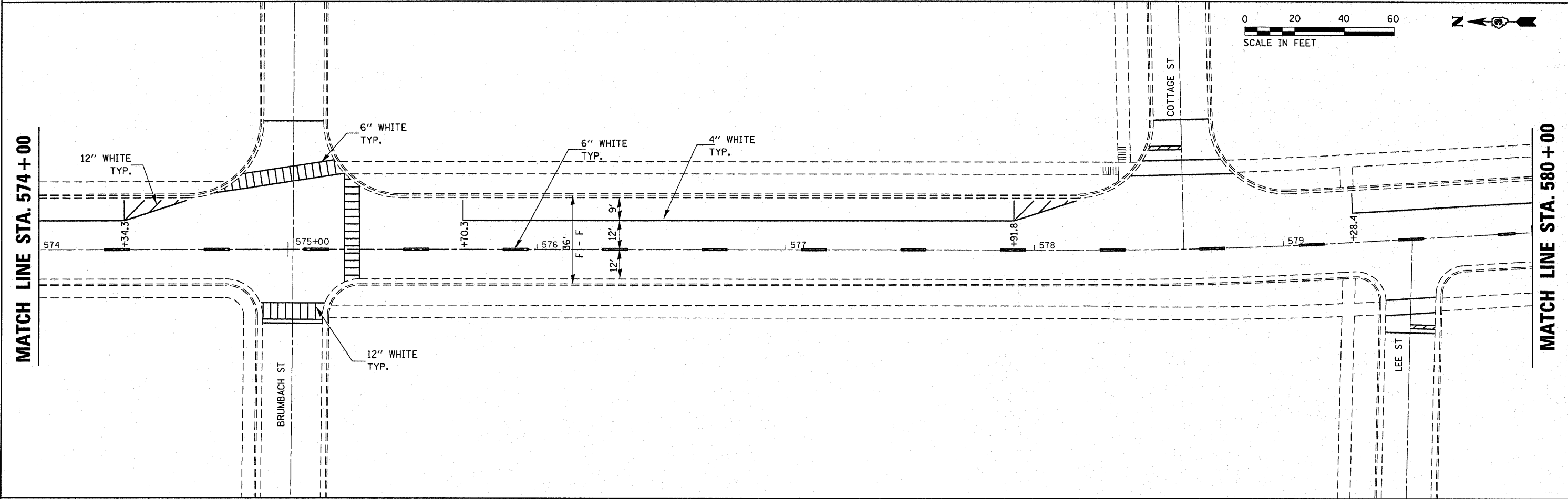
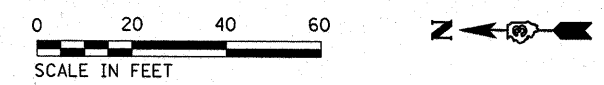


- NOTE 1: MANHOLES TO B ADJUSTED WITH NEW TYPE 1 FRAME, CLOSED LID.
- NOTE 2: INLET TO BE ADJUSTED WITH TYPE 3 FRAME AND GRATE.
- NOTE 3: INLET TO BE ADJUSTED WITH TYPE 11 FRAME AND GRATE.
- NOTE 4: WATER VALVE TO BE ADJUSTED.



FILE NAME =	USER NAME = wasilewskim	DESIGNED -	REVISED -	<b>STATE OF ILLINOIS DEPARTMENT OF TRANSPORTATION</b>	<b>IL RTE. 23 - PARK ST. PAVEMENT MARKING</b>			F.A.P. RTE.	SECTION	COUNTY	TOTAL SHEETS	SHEET NO.
c:\pwork\pwork\wasilewskim\d0248423	D366839-sh-t-details.DGN	DRAWN -	REVISED -					68	(52,99,100)RS-3, (37)RS-2	*	50	40
	PLOT SCALE = 20.0000' / IN.	CHECKED -	REVISED -		SCALE: SHEET NO. OF SHEETS STA. TO STA.			* LASALLE & LIVINGSTON		CONTRACT NO. 66839		
	PLOT DATE = Mar 28, 2011 - 07:21:54 AM	DATE -	REVISED -		ILLINOIS FED. AID PROJECT							