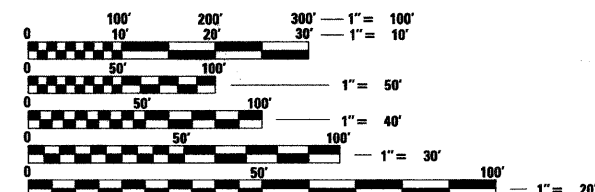


INDEX OF SHEETS

SHEET NO.	DESCRIPTION
1	COVER SHEET
2	GENERAL NOTES
3-5	SUMMARY OF QUANTITIES
6-15	TYPICAL SECTIONS
16-21	SCHEDULES
22	ALIGNMENTS, TIES, AND BENCHMARKS
23-26	REMOVAL PLAN
27-30	ROADWAY PLAN
31-32	PROFILES
33	INTERSECTION DETAILS
34	SUGGESTED STAGING AND TRAFFIC CONTROL - GENERAL NOTES
35-43	SUGGESTED STAGING AND TRAFFIC CONTROL - TYPICAL SECTIONS
44-47	SUGGESTED STAGING AND TRAFFIC CONTROL PLAN - STAGE 1
48-51	SUGGESTED STAGING AND TRAFFIC CONTROL PLAN - STAGE 2
52-55	EROSION AND SEDIMENT CONTROL PLAN
56-59	PAVEMENT MARKING AND SIGNING PLAN
60-61	TRAFFIC SIGNAL PLAN
62	CABLE PLAN
63	MAST ARM AND SIGN DETAILS
64-65	SOIL BORING LOGS
66-72	DISTRICT STANDARDS
73-85	CROSS SECTIONS - IL 71
86-91	CROSS SECTIONS - VAN EMMON ROAD
92	CROSS SECTIONS - RESERVATION ROAD

FOR LIST OF HIGHWAY STANDARDS, SEE SHEET NO. 2

THE IMPROVEMENT IS LOCATED WITHIN UNINCORPORATED KENDALL COUNTY



FULL SIZE PLANS HAVE BEEN PREPARED USING STANDARD ENGINEERING SCALES. REDUCED SIZED PLANS WILL NOT CONFORM TO STANDARD SCALES. IN MAKING MEASUREMENTS ON REDUCED PLANS, THE ABOVE SCALES MAY BE USED.

J.U.L.I.E.
JOINT UTILITY LOCATION INFORMATION FOR EXCAVATION
1-800-892-0123
OR 811

DISTRICT 3 NO. (815) 434-6131
PROJECT ENGINEER: CRAIG REED, P.E.
SQUAD LEADER: MARK JONES, P.E.
CONTRACT NO. 66955

PROJECT LIMITS
IL 71: STATIONS 664+83 TO 680+65.50
VAN EMMON RD: STATIONS 54+50 TO 60+93.72
RESERVATION RD: URBAN 61+10.18 TO 62+05.50

PROJECT LENGTH
GROSS LENGTH: 1583 FT (0.300 MILES)
NET LENGTH: 1583 FT (0.300 MILES)

GRÄEF

8501 W. Higgins Road, Suite 280
Chicago, Illinois 60631
(773) 399-0112

STATE OF ILLINOIS

DEPARTMENT OF TRANSPORTATION

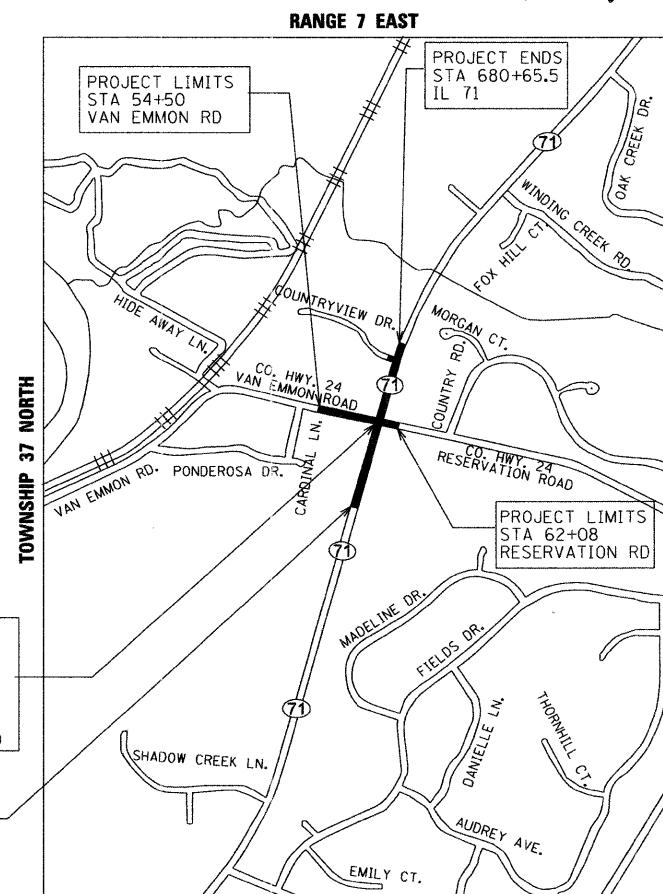
DIVISION OF HIGHWAYS

PROPOSED HIGHWAY PLANS

FAP ROUTE 311 (IL 71) SECTION (1-1)N, TS

AT VAN EMMON / RESERVATION ROAD (FAU 2515) INTERSECTION IMPROVEMENTS KENDALL COUNTY

C-93-025-11 PROJECT: HSIP-0311(044)



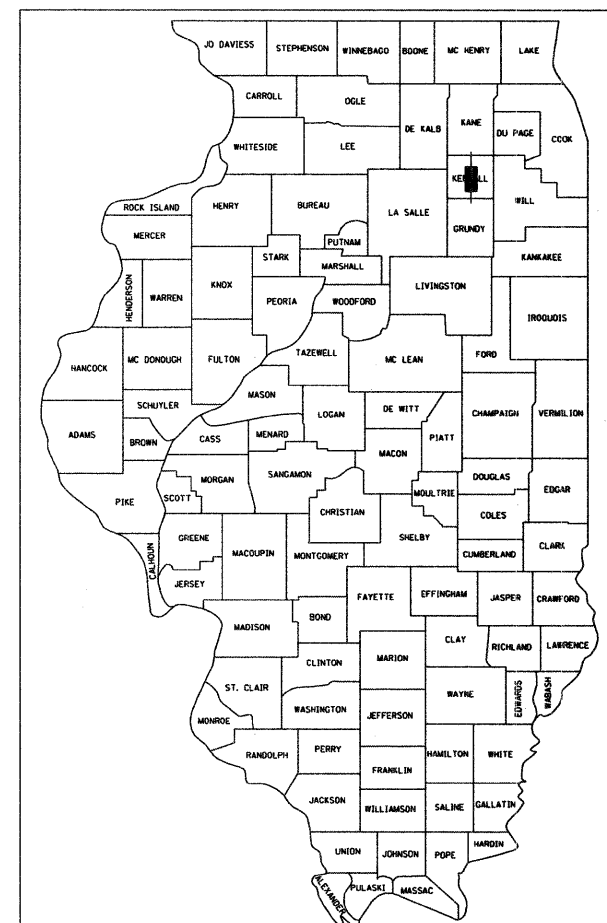
PROJECT LOCATION:
STA. 672+78.09 IL 71
STA. 60+93.72 VAN EMMON RD
PROJECT LOCATION:
STA. 672+98.40 IL 71
STA. 61+10.18 RESERVATION RD

PROJECT BEGINS
STA 664+83
IL 71

SECTION 35
OSWEGO TOWNSHIP

F.A.P. RTE.	SECTION	COUNTY	TOTAL SHEETS	SHEET NO.
311	(1-1)N, TS	KENDALL	92	1

P-93-020-09
D-93-020-11



LOCATION OF SECTION INDICATED THUS: -

FUNCTIONAL CLASSIFICATIONS

IL 71: OTHER PRINCIPAL ARTERIAL (STRATEGIC REGIONAL ARTERIAL)
VAN EMMON RD: URBAN MINOR ARTERIAL UNDER KENDALL COUNTY JURISDICTION
RESERVATION RD: URBAN COLLECTOR UNDER KENDALL COUNTY JURISDICTION

TRAFFIC DATA

2009 ADT & VEHICULAR BREAKDOWN:
IL 71: 12,000 (PV 88%; SU 5%; MU 7%)
VAN EMMON RD: 3,000 (PV 82%; SU 3%; MU 15%)
RESERVATION RD: 900 (PV 76%; SU 9%; MU 15%)

SPEEDS

DESIGN & POSTED LIMIT:
IL 71 (EXISTING): 55 MPH (55 MPH POSTED)
IL 71 (PROPOSED): 50 MPH (50 MPH POSTED)
VAN EMMON RD: 45 MPH (45 MPH UN-POSTED)
RESERVATION RD: 45 MPH (45 MPH UN-POSTED)



Jonathan W. Davis
062-062477
expires 11/30/2011

STATE OF ILLINOIS DEPARTMENT OF TRANSPORTATION DIVISION OF HIGHWAYS	
SUBMITTED	4-4 20 11
	<i>Eric S. Thompson</i>
	DEPUTY DIRECTOR OF HIGHWAYS, REGION ENGINEER
	May 13 20 11
	<i>Scott E. Stettin P.E.</i>
	ENGINEER OF DESIGN AND ENVIRONMENT
Asking	May 13 20 11
	<i>Christine M. Road</i>
	DIRECTOR OF HIGHWAYS, CHIEF ENGINEER

PRINTED BY THE AUTHORITY
OF THE STATE OF ILLINOIS