

INDEX OF SHEETS

1. COVER SHEET
2. GENERAL NOTES
3. SUMMARY OF QUANTITIES
4. TYPICAL SECTIONS
5. SCHEDULES
6. PAVEMENT MARKING
7. PLAN DETAILS
8. SECTION DETAILS

STANDARDS

000001-06	STANDARD SYMBOLS, ABBREVIATIONS AND PATTERNS
001006	DECIMAL OF AN INCH AND OF A FOOT
442101-07	CLASS B PATCHES
482006-03	HMA SHOULDER ADJACENT TO RIGID PAVEMENT
606001-04	CONCRETE CURB TYPE B AND COMBINATION CONCRETE CURB AND GUTTER
635001-01	DELINEATORS
701101-02	OFF-ROAD OPERATIONS MULTILANE, 15' (4.5 m) TO 24" (600 mm) FROM PAVEMENT EDGE
701106-02	OFF-ROAD OPERATIONS, MULTILANE, MORE THAN 15' (4.5 m) AWAY
701451-01	RAMP CLOSURE FREEWAY/EXPRESSWAY
701901-01	TRAFFIC CONTROL DEVICES

STATE OF ILLINOIS
DEPARTMENT OF TRANSPORTATION
DIVISION OF HIGHWAYS
**PROPOSED
HIGHWAY PLANS**

FAI ROUTE 57 (I-57)
SECTION (38-8)RA-7

**REST AREA REPAIR AND RENOVATION
IROQUOIS COUNTY**
C-93-086-11

F.A.I. RTE.	SECTION	COUNTY	TOTAL SHEETS	SHEET NO.
57	(38-8)RA-7	IROQUOIS	8	1
		ILLINOIS	CONTRACT NO. 66B20	

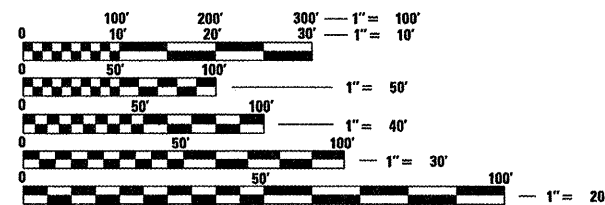
D-93-067-11



LOCATION OF SECTION INDICATED THUS: - [shaded area] -

RURAL INTERSTATE	
FAI RTE. 57 (I-57)	
2009	
ROADWAY	REST AREA
ADT = 15400	ADT = 1100
P.V. = 74.68%	P.V. = 70.52%
S.U. 5.84%	S.U. 18.18%
M.U. = 19.48%	M.U. = 11.30%

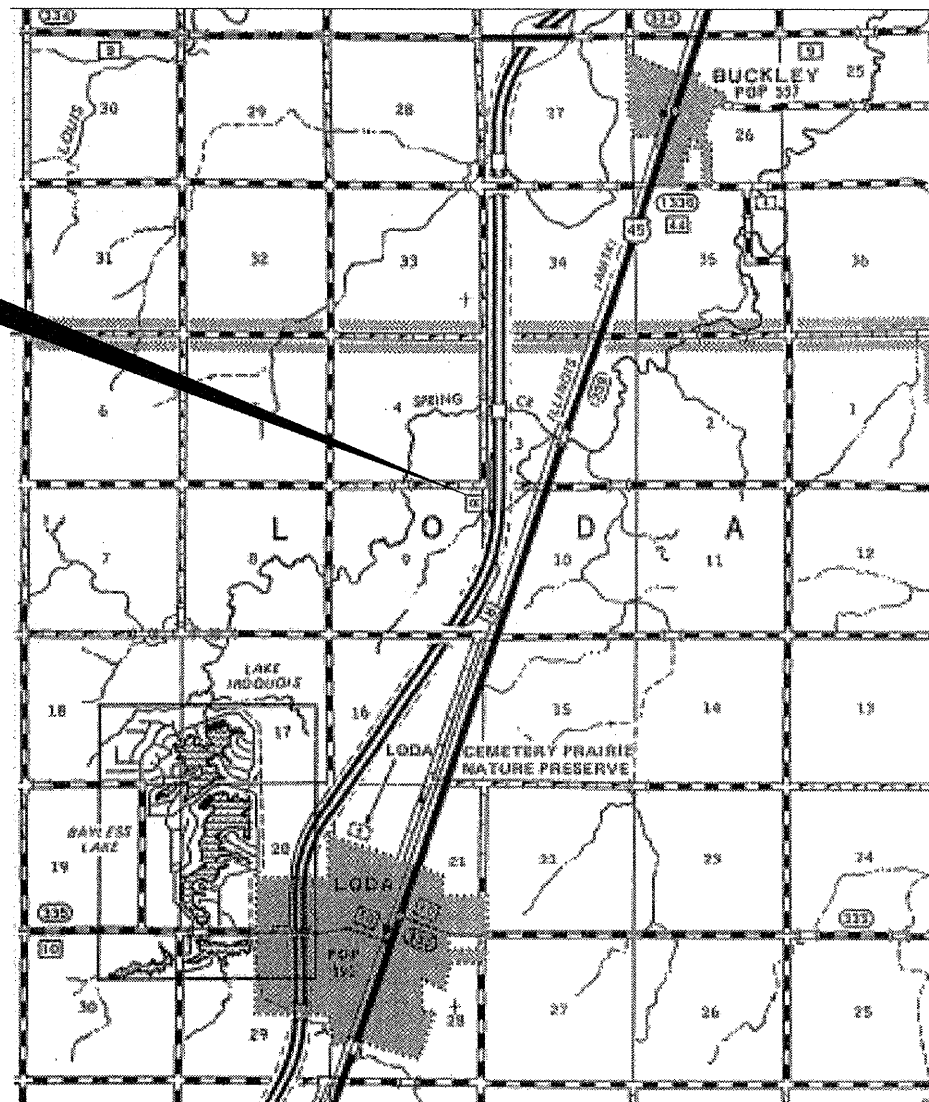
PROJECT LOCATION
MAIN LINE STATION
SOUTHBOUND REST AREA
3.06 MILES SOUTH OF BUCKLEY



FULL SIZE PLANS HAVE BEEN PREPARED USING STANDARD ENGINEERING SCALES. REDUCED SIZED PLANS WILL NOT CONFORM TO STANDARD SCALES. IN MAKING MEASUREMENTS ON REDUCED PLANS, THE ABOVE SCALES MAY BE USED.

J.U.L.I.E.
JOINT UTILITY LOCATION INFORMATION FOR EXCAVATION
1-800-892-0123
OR 811

PROJECT ENGINEER: JOE KANNEL P.E.
UNIT CHIEF: RON WOODSHANK
TOWNSHIP: WYANET
CONTRACT NO. 66B20



POINT LOCATIONS

STATE OF ILLINOIS
DEPARTMENT OF TRANSPORTATION
DIVISION OF HIGHWAYS

SUBMITTED 4/7 20 11
Ease S. Threlkenton
DEPUTY DIRECTOR OF HIGHWAYS, REGION ENGINEER

May 13 20 11
Scott E. Stitt P.E.
acting ENGINEER OF DESIGN AND ENVIRONMENT

May 13 20 11
Christine M. Reader
DIRECTOR OF HIGHWAYS, CHIEF ENGINEER

**PRINTED BY THE AUTHORITY
OF THE STATE OF ILLINOIS**