

INDEX OF SHEETS

1. COVER SHEET
2. GENERAL NOTES
3. SUMMARY OF QUANTITIES
4. TYPICAL SECTIONS
5. SCHEDULES
6. PAVEMENT MARKING
7. PLAN DETAILS
8. SECTION DETAILS

STANDARDS

000001-06	STANDARD SYMBOLS, ABBREVIATIONS AND PATTERNS
001006	DECIMAL OF AN INCH AND OF A FOOT
442101-07	CLASS B PATCHES
482006-03	HMA SHOULDER ADJACENT TO RIGID PAVEMENT
606001-04	CONCRETE CURB TYPE B AND COMBINATION CONCRETE CURB AND GUTTER DELINEATORS
635001-01	OFF-ROAD OPERATIONS MULTILANE, 15' (4.5 m) TO 24" (600 mm) FROM PAVEMENT EDGE
701101-02	OFF-ROAD OPERATIONS, MULTILANE, MORE THAN 15' (4.5 m) AWAY
701106-02	RAMP CLOSURE FREEWAY/EXPRESSWAY
701451-01	TRAFFIC CONTROL DEVICES

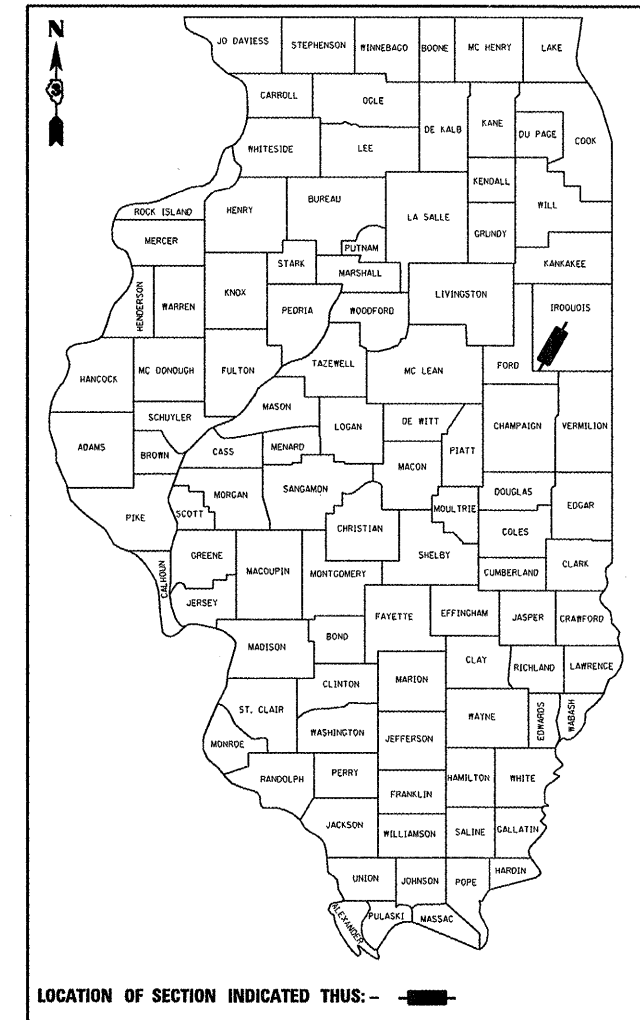
STATE OF ILLINOIS
DEPARTMENT OF TRANSPORTATION
DIVISION OF HIGHWAYS
**PROPOSED
HIGHWAY PLANS**

FAI ROUTE 57 (I-57)
SECTION (38-8)RA-7

**REST AREA REPAIR AND RENOVATION
IROQUOIS COUNTY**
C-93-086-11

F.A.I. RTE.	SECTION	COUNTY	TOTAL SHEETS	SHEET NO.
57	(38-8)RA-7	IROQUOIS	8	1
		ILLINOIS	CONTRACT NO. 66B20	

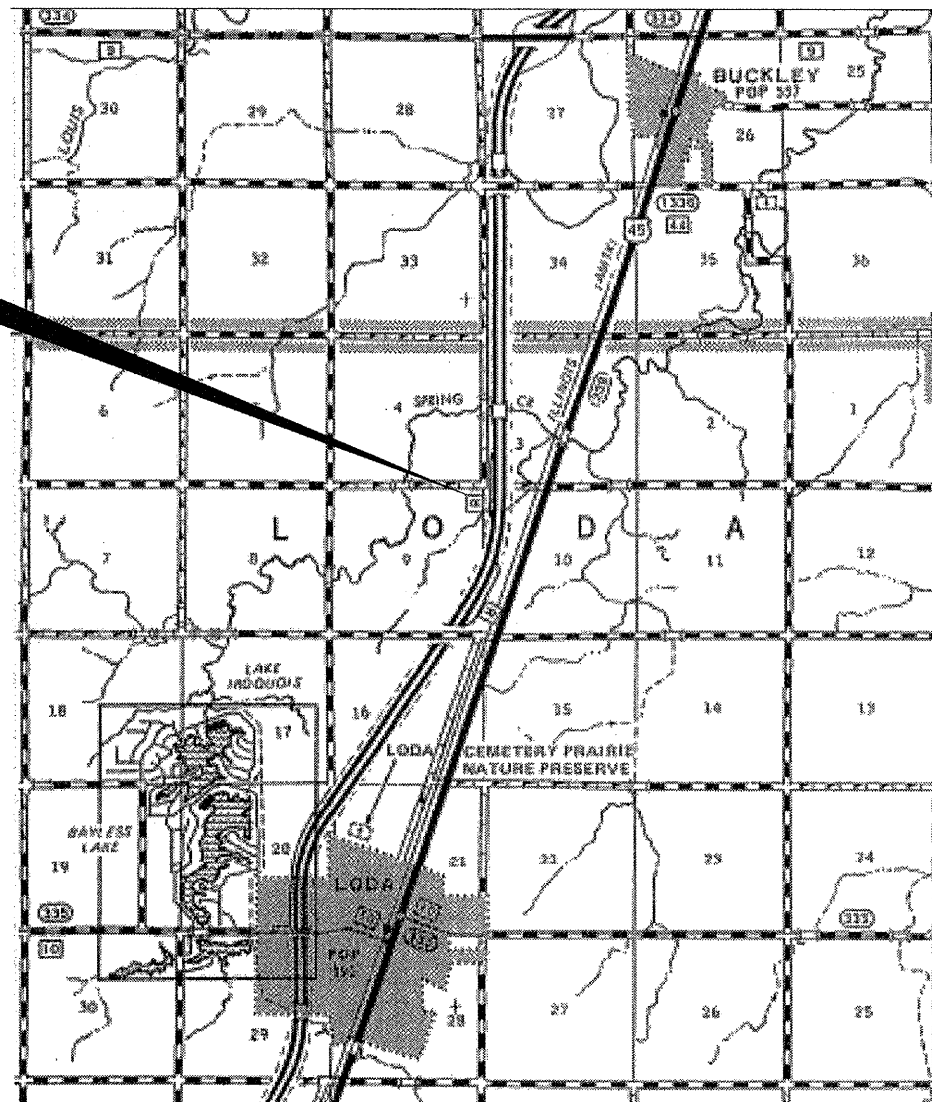
D-93-067-11



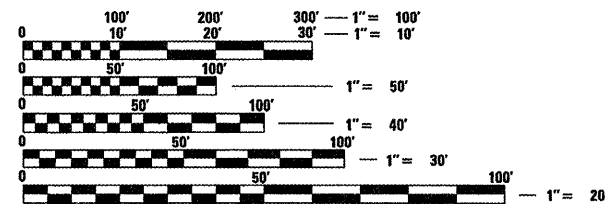
LOCATION OF SECTION INDICATED THUS: - [shaded area] -

RURAL INTERSTATE	
FAI RTE. 57 (I-57)	
2009	
ROADWAY	REST AREA
ADT = 15400	ADT = 1100
P.V. = 74.68%	P.V. = 70.52%
S.U. 5.84%	S.U. 18.18%
M.U. = 19.48%	M.U. = 11.30%

PROJECT LOCATION
MAIN LINE STATION
SOUTHBOUND REST AREA
3.06 MILES SOUTH OF BUCKLEY



POINT LOCATIONS



FULL SIZE PLANS HAVE BEEN PREPARED USING STANDARD ENGINEERING SCALES. REDUCED SIZED PLANS WILL NOT CONFORM TO STANDARD SCALES. IN MAKING MEASUREMENTS ON REDUCED PLANS, THE ABOVE SCALES MAY BE USED.

J.U.L.I.E.
JOINT UTILITY LOCATION INFORMATION FOR EXCAVATION
1-800-892-0123
OR 811

PROJECT ENGINEER: JOE KANNEL P.E.
UNIT CHIEF: RON WOODSHANK
TOWNSHIP: WYANET
CONTRACT NO. 66B20

STATE OF ILLINOIS
DEPARTMENT OF TRANSPORTATION
DIVISION OF HIGHWAYS

SUBMITTED 4/7 20 11
Euse S. Thurlandson
DEPUTY DIRECTOR OF HIGHWAYS, REGION ENGINEER

May 13 20 11
Scott E. Stitt P.E.
acting ENGINEER OF DESIGN AND ENVIRONMENT

May 13 20 11
Christine M. Reader
DIRECTOR OF HIGHWAYS, CHIEF ENGINEER

**PRINTED BY THE AUTHORITY
OF THE STATE OF ILLINOIS**

GENERAL NOTES

PLAN DIMENSIONS AND DETAILS RELATIVE TO EXISTING PLANS ARE SUBJECT TO NOMINAL CONSTRUCTION VARIATIONS. THE CONTRACTOR SHALL FIELD VERIFY EXISTING DIMENSIONS AND DETAILS AFFECTING NEW CONSTRUCTION AND MAKE NECESSARY APPROVED ADJUSTMENTS PRIOR TO CONSTRUCTION OR ORDERING OF MATERIALS. SUCH VARIATIONS SHALL NOT BE CAUSE FOR ADDITIONAL COMPENSATION FOR A CHANGE IN SCOPE OF WORK; HOWEVER, THE CONTRACTOR WILL BE PAID FOR THE QUANTITY ACTUALLY FURNISHED AT THE UNIT PRICE BID FOR THE WORK.

THE THICKNESS OF HMA SHOWN ON THE PLANS IS THE NOMINAL THICKNESS. DEVIATIONS FROM THE NOMINAL THICKNESS WILL BE PERMITTED WHEN SUCH DEVIATIONS OCCUR DUE TO IRREGULARITIES IN THE EXISTING SURFACE OR BASE ON WHICH THE HMA IS PLACED.

THE ENGINEER WILL BE THE SOLE JUDGE CONCERNING CURING TIME FOR THE VARIOUS HMA LIFTS.

FOR STABILIZATION, ALL TYPE III BARRICADES SHALL REQUIRE A MINIMUM OF FOUR SAND BAGS PER BARRICADE.

SEEDING SHALL NOT BE PERMITTED AT ANY TIME WHEN THE GROUND IS FROZEN, WET, OR IN AN UNTILLABLE CONDITION. LOCATIONS TO BE SEEDED WILL BE DETERMINED BY THE ENGINEER.

THE FINISHED EARTHWORK SHALL HAVE A VEGETATION SUSTAINING SOIL COVERING THE TOP FOUR INCHES IN AREAS TO BE SEEDED OR SODDED. THE VEGETATION SUSTAINING SOIL REQUIRED WILL NOT BE PAID FOR SEPARATELY BUT SHALL BE INCLUDED IN THE COST OF "FURNISHED EXCAVATION".

ABANDONED UNDERGROUND UTILITIES THAT CONFLICT WITH CONSTRUCTION SHALL BE DISPOSED OF OUTSIDE THE LIMITS OF THE RIGHT OF WAY ACCORDING TO ARTICLE 202.03 OF THE STANDARD SPECIFICATIONS AND AS DIRECTED BY THE ENGINEER. THIS WORK WILL NOT BE PAID FOR SEPARATELY, BUT SHALL BE INCLUDED IN THE COST OF EARTH EXCAVATION.

ANY REFERENCE TO A STANDARD IN THESE PLANS SHALL BE INTERPRETED TO MEAN THE EDITION AS INDICATED BY THE SUBNUMBER SHOWN IN THE LIST OF STANDARDS OR THE COPY INCLUDED IN THESE PLANS.

THE FOLLOWING RATES OF APPLICATION HAVE BEEN USED IN CALCULATING PLAN QUANTITIES:

THE CONTRACTOR'S ATTENTION IS DIRECTED TO THE PRESENCE OF DEPARTMENT-OWNED UNDERGROUND ELECTRICAL CABLE WITHIN THE LIMITS OF THE PROPOSED IMPROVEMENT. THE CONTRACTOR SHALL REQUEST THE ILLINOIS DEPARTMENT OF TRANSPORTATION IN OTTAWA (815-434-8417) TO LOCATE THE UNDERGROUND FACILITIES, PROVIDING A MINIMUM OF 72 HOURS NOTICE. THE DEPARTMENT IS NOT A MEMBER OF THE JOINT UTILITY LOCATING INFORMATION FOR EXCAVATORS (JULIE) SYSTEM.

ALL DAMAGE TO DEPARTMENT OWNED UNDERGROUND FACILITIES, CAUSED BY THE CONTRACTOR SHALL BE REPAIRED TO THE SATISFACTION OF THE DEPARTMENT AT THE CONTRACTOR'S EXPENSE. THIS SHALL INCLUDE ALL TEMPORARY REPAIRS REQUIRED TO KEEP THE FACILITY OPERATIONAL WHILE MATERIAL IS BEING OBTAINED TO MAKE PERMANENT REPAIRS. SPLICING OF ELECTRIC CABLE SHALL NOT BE ALLOWED. ELECTRIC CABLE SHALL BE REPLACED FROM POLE TO POLE OR CONTROLLER.

THE CONTRACTOR SHALL CONTACT JULIE AT LEAST 48 HOURS PRIOR TO EXCAVATION TO DETERMINE WHICH UTILITIES ARE IN THE AREA.

COMMITMENTS

ALL EXCAVATED MATERIALS DERIVED FROM SHOULDER OR PAVEMENT WIDENING OPERATIONS SHALL REMAIN ON SITE AND SHALL BE DISPOSED OF AS DIRECTED BY THE ENGINEER.

DATE: 4/7/2011

PREPARED BY: Dave Brown
DISTRICT STUDIES & PLANS ENGINEER

EXAMINED BY: [Signature]
DISTRICT CONSTRUCTION ENGINEER

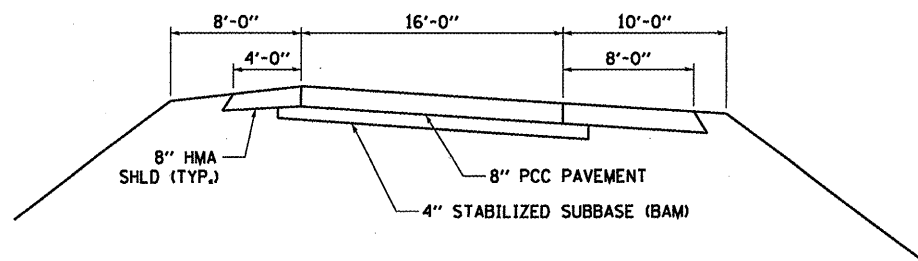
Wayne L. Phillips
DISTRICT MATERIALS ENGINEER

[Signature]
DISTRICT OPERATIONS ENGINEER

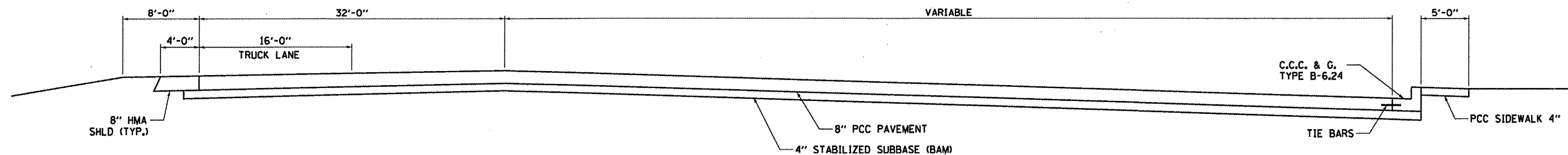
FILE NAME =	USER NAME = woodshankr1	DESIGNED - RON WOODSHANK	REVISED -	STATE OF ILLINOIS DEPARTMENT OF TRANSPORTATION	GENERAL NOTES	F.A.I. RTE.	SECTION	COUNTY	TOTAL SHEETS	SHEET NO.
01\pwwork\pwwork\woodshankr1\d8267938\386820-shd-deta11.dgn	DRAWN - RON WOODSHANK	REVISED -	57			(38-81RA-7	IRROUJOIS	8	2	
PLOT SCALE = 100.0000' / IN.	CHECKED -	REVISED -	CONTRACT NO. 66820							
PLOT DATE = Mar 15, 2011 - 10:32:22 AM	DATE -	REVISED -	ILLINOIS FED. AID PROJECT							
				SCALE: _____	SHEET NO. 1 OF 1 SHEETS	STA. _____ TO STA. _____				

CODE NO.	ITEM	UNIT	TOTAL QUANTITY	CONSTR. CODE
				STATE FUNDS
				100% STATE
				ROADWAY
				0005
				RURAL
20200500	EARTH EXCAVATION (WIDENING)	CU YD	60	60
35100500	AGGREGATE BASE COURSE, TYPE A 6"	SQ YD	254	254
35400300	PORTLAND CEMENT CONCRETE BASE COURSE WIDENING 8"	SQ YD	261	261
40600985	PORTLAND CEMENT CONCRETE SURFACE REMOVAL - BUTT JOINT	SQ YD	112	112
44000300	CURB REMOVAL	FOOT	35	35
44000500	COMBINATION CONCRETE CURB AND GUTTER REMOVAL	FOOT	135	135
44004250	PAVED SHOULDER REMOVAL	SQ YD	548	548
44200934	CLASS B PATCHING, TYPE II, 8 INCH	SQ YD	185	185
44200944	CLASS B PATCHING, TYPE IV, 8 INCH	SQ YD	71	71
44201299	DOWEL BARS 1 1/2"	EACH	476	476
44213100	PAVEMENT FABRIC	SQ YD	332	332
44213200	SAW CUTS	FOOT	1104	1104
44213204	TIE BARS 3/4"	EACH	120	120
48100700	AGGREGATE SHOULDERS, TYPE A 8"	SQ YD	274	274
48203029	HOT-MIX ASPHALT SHOULDER, 8"	SQ YD	274	274
60605100	COMBINATION CONCRETE CURB AND GUTTER, TYPE B6.24 (ABUTTING EXISTING PAVEMENT)	FOOT	135	135
60608700	COMBINATION CONCRETE CURB AND GUTTER, TYPE M-6.06 (ABUTTING EXISTING PAVEMENT)	FOOT	15	15
63500105	DELINEATORS	EACH	130	130
67100100	MOBILIZATION	L SUM	1	1
70100820	TRAFFIC CONTROL AND PROTECTION, STANDARD 701451	L SUM	1	1
* 78005100	EPOXY PAVEMENT MARKING - LETTERS AND SYMBOLS	SQ FT	9.2	9.2
* 78005110	EPOXY PAVEMENT MARKING-LINE 4"	FOOT	1590	1590
X0325536	RAPID SETTING POLYMER MODIFIED EMULSION	GALLON	128	128
X0326129	ULTRA-THIN HOT-MIX ASPHALT SURFACE COURSE	SQ YD	1575	1575

*SPECIALITY ITEM



**TYPICAL SECTION
RAMP**



**TYPICAL SECTION
PARKING LOT**

FILE NAME =	USER NAME = woodshankr1	DESIGNED - RON WOODSHANK	REVISED -
at:\pwork\pwork\woodshankr1\0257938\036620-shd-details.DGN		DRAWN - RON WOODSHANK	REVISED -
PLOT SCALE = 1/8" = 1'-0"		CHECKED -	REVISED -
PLOT DATE = Mar 15, 2011 - 10:32:48 AM		DATE -	REVISED -

STATE OF ILLINOIS
DEPARTMENT OF TRANSPORTATION

TYPICAL SECTIONS	
SCALE: _____	SHEET NO. 1 OF 1 SHEETS STA. _____ TO STA. _____

F.A.J. RTE. 57	SECTION (38-BIRA-7)	COUNTY IROUOIS	TOTAL SHEETS 8	SHEET NO. 4
CONTRACT NO. 66B20				
ILLINOIS FED. AID PROJECT				

PATCHING SCHEDULE						
LOCATION BY L.M.	TRUCK LANE					
	CLASS B PATCHING		DOWEL BARS EACH	SAW CUTS FOOT	PVMT FABRIC SQ YD	TIE BARS EACH
	TYPE II SQ YD	TYPE IV SQ YD				
11+03	11		28	60		
11+18	11		28	60		
11+40	14		28	64		
11+85	14		28	64		
12+35	11		28	60		
13+75	11		28	60		
14+30	11		28	60		
14+66	11		28	60		
15+77	11		28	60		
16+54	14		28	64		
17+50	11		28	60		
18+65	11		28	60		
19+01	14		28	64		
20+87		71	28	128	71	20
21+53	11		28	60		
21+66	11		28	60		
21+80	11		28	60		
	185	71	476	1104	71	20

WIDENING SCHEDULE			
LOCATION	EARTH EXCAVATION (WIDENING)	AGGREGATE BASE CSE. TYPE A 6"	PCC BASE COURSE WIDENING 8"
	CU YD	SQ YD	SQ YD
	STA. 19+69 - STA. 22+14	60	254

SHOULDER SCHEDULE			
LOCATION	PAVED SHOULDER REMOVAL	HOT-MIX ASPHALT SHOULDER 8"	AGGREGATE SHOULDER TYPE A 8"
	SQ YD	SQ YD	SQ YD
	STA. 10+00 - STA. 22+32	548	274

PAVING SCHEDULE			
LOCATION	PCC SURFACE REMOVAL BUTT JOINT	RAPID SETTING POLYMER MODIFIED EMULSION	ULTRA-THIN HOT-MIX ASPHALT SURFACE CSE.
	SQ YD	GALLON	SQ YD
	NORTH PARKING LOT	50	60
SOUTH PARKING LOT	62	68	843
TOTAL	112	128	1575

PAVEMENT MARKING SCHEDULE			
LOCATION	EPOXY PAVEMENT MARKING L & S	EPOXY PAVEMENT MARKING LINE 4"	
	SQ FT	FOOT	FOOT
	YELLOW	YELLOW	WHITE
	NORTH PARKING LOT	4.6	392
SOUTH PARKING LOT	4.6	392	465
SUBTOTAL	9.2	784	806
TOTAL	9.2	1590	

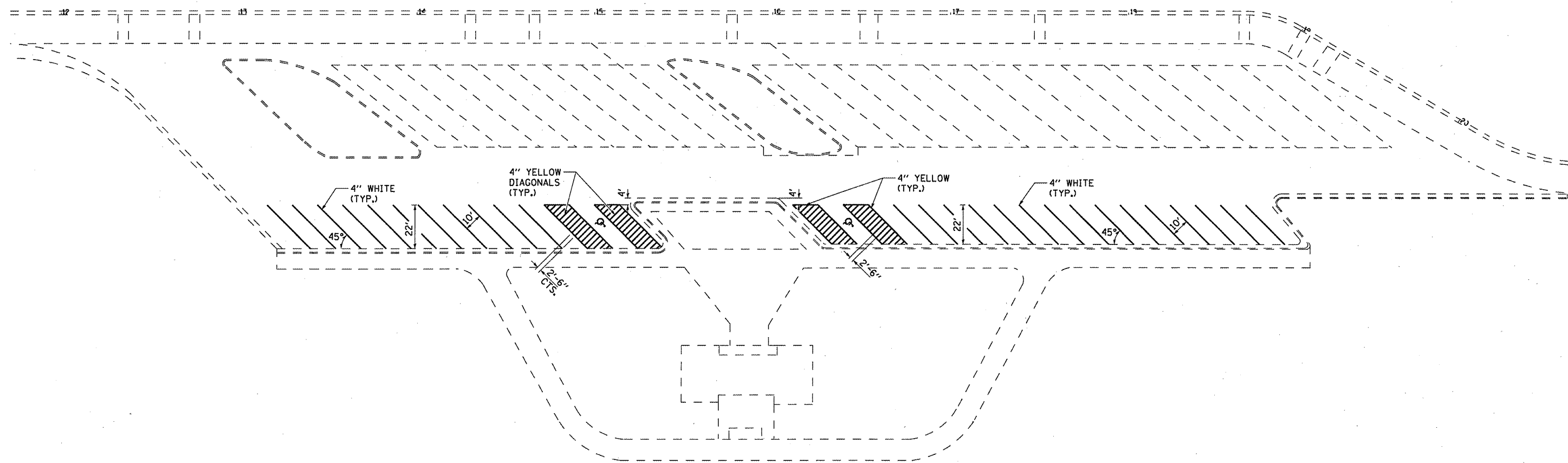
FILE NAME =	USER NAME = petelyj	DESIGNED - RON WOODSHANK	REVISED -
c:\pwork\pwidot\petelyj\d0257938\0366820-shd-details.DGN		DRAWN - RON WOODSHANK	REVISED -
PLOT SCALE = 100.0099 / IN.		CHECKED -	REVISED -
PLOT DATE = Apr 07, 2011 - 08:41:23 AM		DATE -	REVISED -

STATE OF ILLINOIS
DEPARTMENT OF TRANSPORTATION

SCHEDULES

SCALE: SHEET NO. 1 OF 1 SHEETS STA. TO STA.

F.A.I. RTE. 57	SECTION (38-8)RA-7	COUNTY IROQUOIS	TOTAL SHEETS 8	SHEET NO. 5
CONTRACT NO. 66B20				ILLINOIS FED. AID PROJECT



PLAN

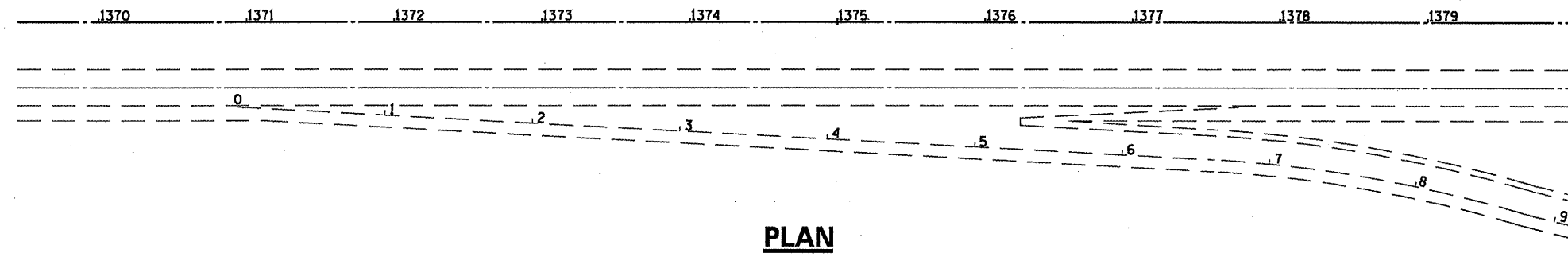
FILE NAME =	USER NAME = petelyj	DESIGNED - RON WOODSHANK	REVISED -
c:\pwwork\pvidot\petelyj\d0257938\036620-shr-details.dgn		DRAWN - RON WOODSHANK	REVISED -
PLOT SCALE = 1/8" = 1' / IN.	CHECKED -	REVISED -	REVISED -
PLOT DATE = Apr 07, 2011 - 08:42:20 AM	DATE -	REVISED -	REVISED -

**STATE OF ILLINOIS
DEPARTMENT OF TRANSPORTATION**

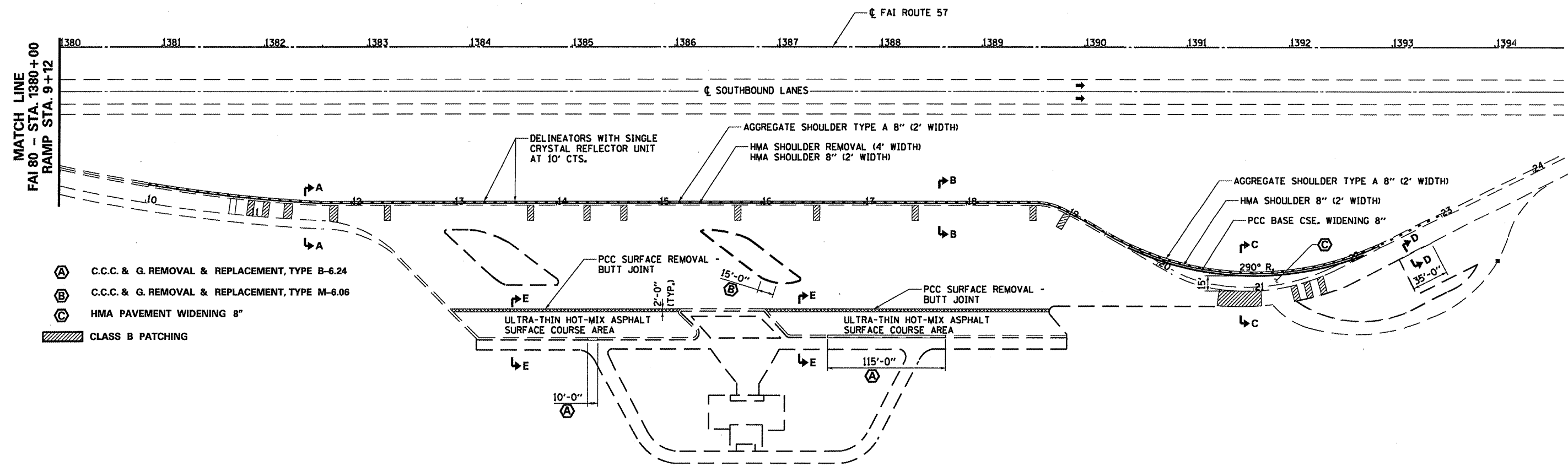
PAVEMENT MARKING

SCALE: SHEET NO. 1 OF 1 SHEETS STA. TO STA.

F.A.I. RTE.	SECTION	COUNTY	TOTAL SHEETS	SHEET NO.
57	(38-8)RA-7	IROQUOIS	8	6
CONTRACT NO. 66B20				
ILLINOIS FED. AID PROJECT				

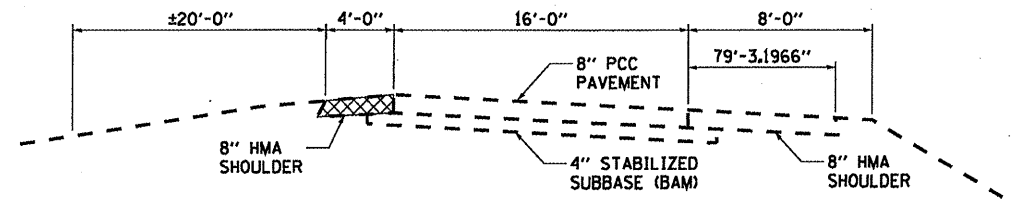


PLAN



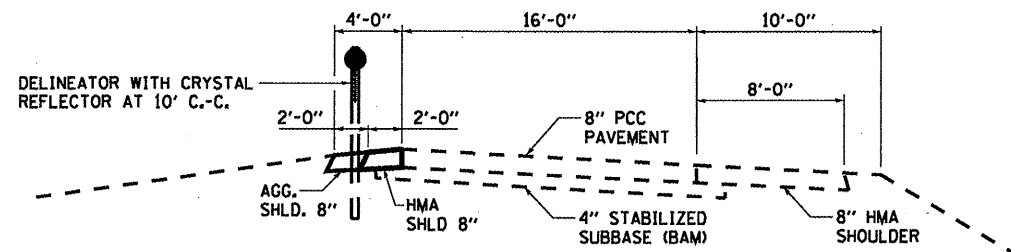
PLAN

FILE NAME = c:\pwwork\pwwork\woodshankr1\d0257938\0366820-shd-details.dgn	USER NAME = woodshankr1	DESIGNED - RON WOODSHANK	REVISED -	STATE OF ILLINOIS DEPARTMENT OF TRANSPORTATION	PLAN DETAILS	F.A.I. RTE. 57	SECTION 138-BIRA-7	COUNTY IROQUOIS	TOTAL SHEETS 8	SHEET NO. 7
	PLOT SCALE = 100.0000' / IN.	DRAWN - RON WOODSHANK	REVISED -			SCALE: _____	SHEET NO. 1 OF 1 SHEETS	STA. _____ TO STA. _____	CONTRACT NO. 66B20 ILLINOIS FED. AID PROJECT	
PLOT DATE = Mar 15, 2011 - 10:33:23 AM	CHECKED -	DATE -	REVISED -							



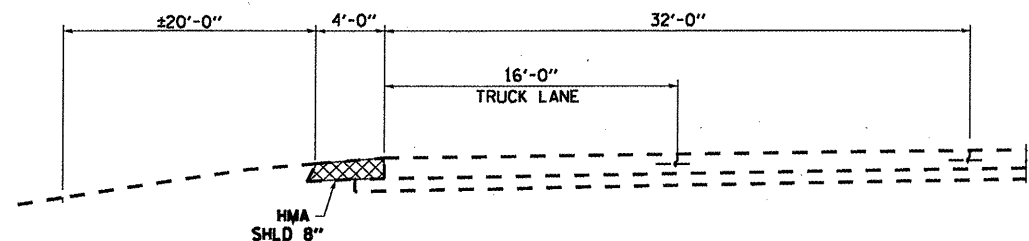
STABILIZED SHOULDER REMOVAL

EXISTING



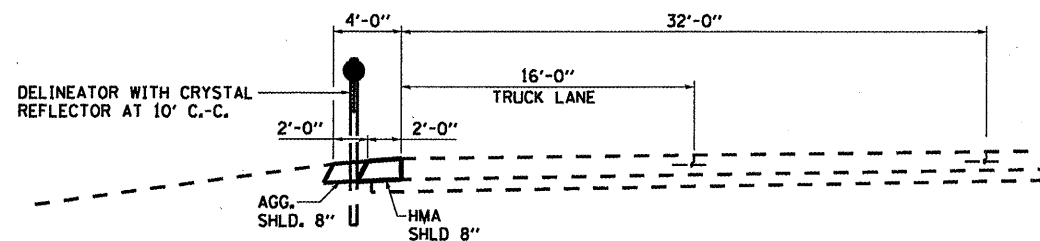
PROPOSED

SECTION A-A



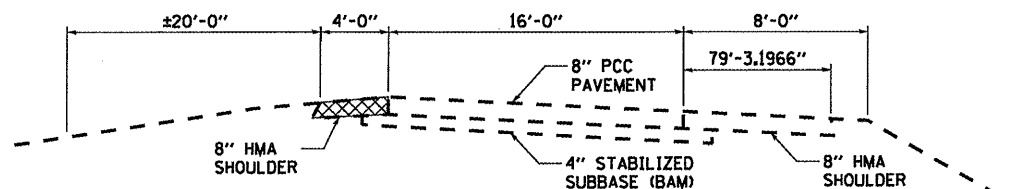
STABILIZED SHOULDER REMOVAL

EXISTING



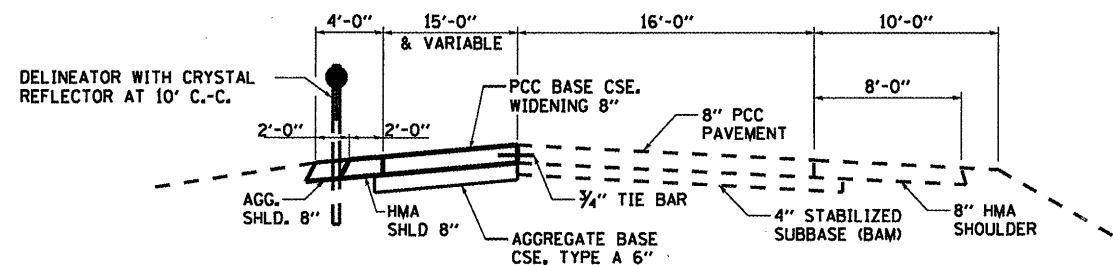
PROPOSED

SECTION B-B



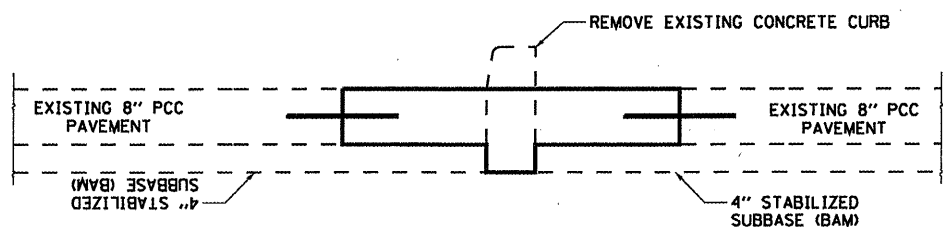
STABILIZED SHOULDER REMOVAL

EXISTING

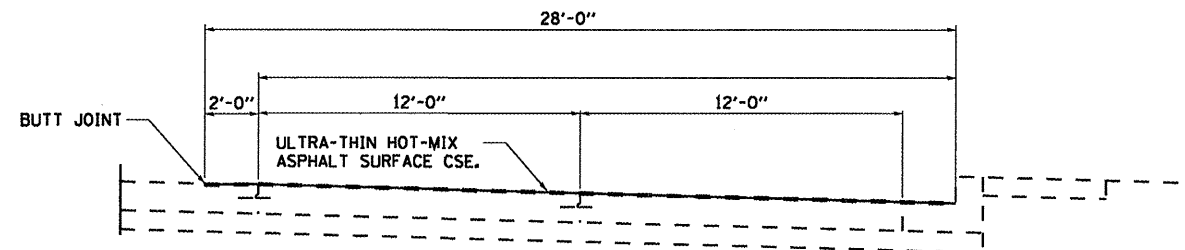


PROPOSED

SECTION C-C



SECTION D-D



SECTION E-E

FILE NAME =	USER NAME = woodshankr1	DESIGNED - RON WOODSHANK	REVISED -
o:\pwork\pwork\woodshankr1\02257938\0366828-shd-details.dgn		DRAWN - RON WOODSHANK	REVISED -
	PLOT SCALE = 100.0000' / IN.	CHECKED -	REVISED -
	PLOT DATE = Mar 15, 2011 - 10:33:36 AM	DATE -	REVISED -

STATE OF ILLINOIS
DEPARTMENT OF TRANSPORTATION

SECTION DETAILS

F.A.I. RTE. 57	SECTION (38-BJA-7)	COUNTY IROUOIS	TOTAL SHEETS 8	SHEET NO. 8
SCALE: SHEET NO. 1 OF 1 SHEETS STA. TO STA.			CONTRACT NO. 66B20	
ILLINOIS FED. AID PROJECT				