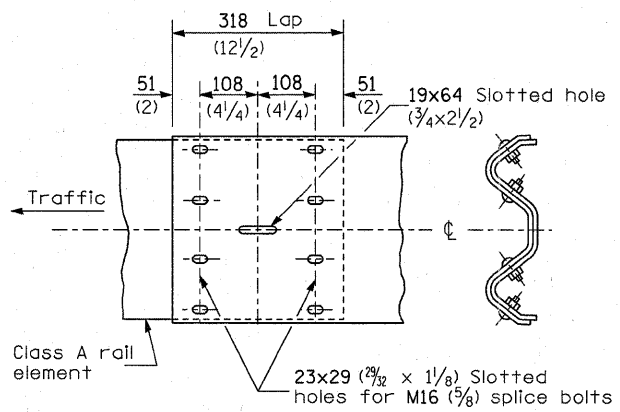
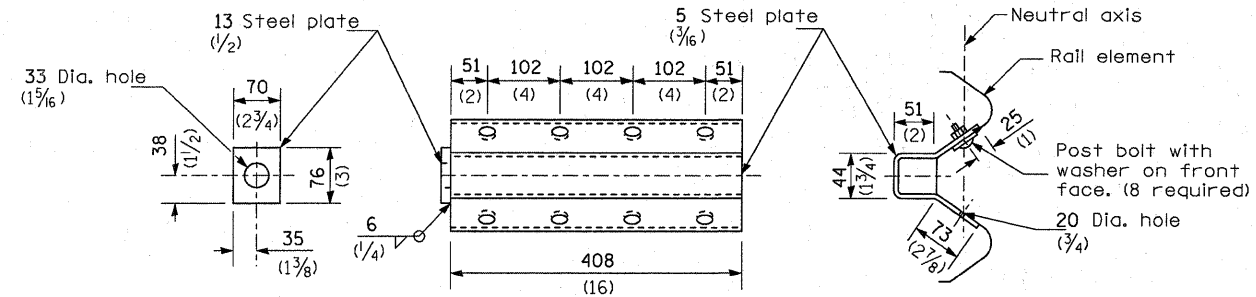


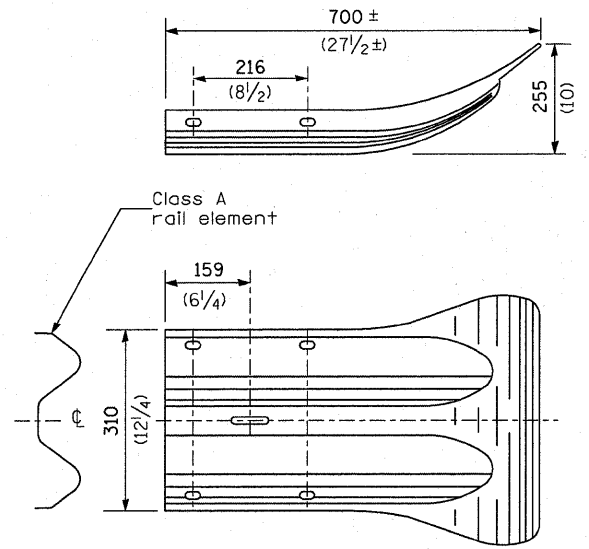
**SPLICE PLATE**



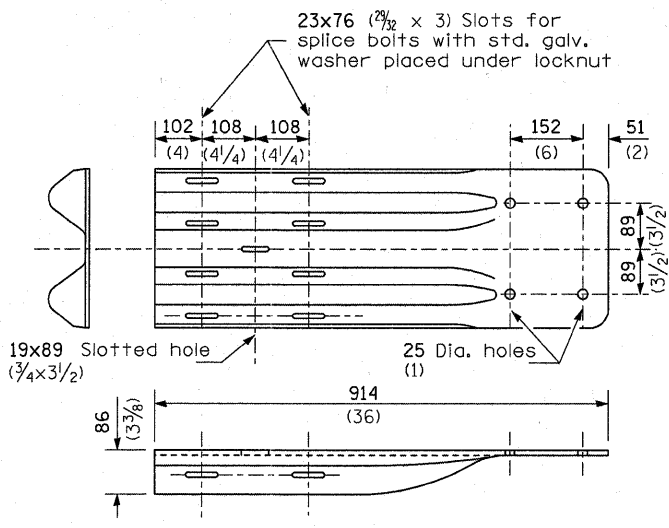
**RAIL ELEMENT SPLICE**



**ANCHOR PLATE T DETAILS**



**END SECTION**



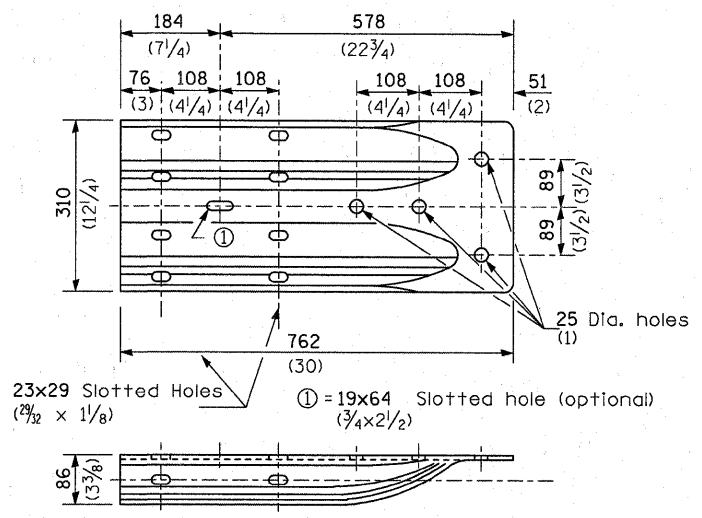
**NOTE**

When end shoe is attached to a bridge parapet which has an expansion joint, the bolts shall be provided with a locknut or double nut and shall be tightened only to a point that will allow guardrail movement.

The standard end shoe shall be attached to the concrete with pre-drilled or self-drilling anchor bolts. The anchor cone shall be set flush with the surface of the concrete.

Externally threaded studs protruding from the surface of the concrete will not be permitted.

**END SHOE**



**ALTERNATE END SHOE**

FILE NAME =	USER NAME = quigleyml	DESIGNED -	REVISED -	<b>STATE OF ILLINOIS DEPARTMENT OF TRANSPORTATION</b>	<b>PRE-MGS EFFECTIVE 4-1-06 STEEL PLATE BEAM GUARDRAIL STANDARD 630001-06</b>	F.A. RTE.	SECTION	COUNTY	TOTAL SHEETS	SHEET NO.
c:\pw_work\pwsdot\quigleyml\d0258015\036829-ahh-DETAILS.dgn	DRAWN -	REVISED -	VAR.				VAR.	35	17	
PLOT SCALE = 50.0000' / IN.	CHECKED -	REVISED -								
PLOT DATE = Apr 07, 2011 - 11:40:01 AM	DATE -	REVISED -								
					SCALE:	SHEET NO. OF SHEETS STA. TO STA.		(Sheet 3 of 4)		
					FED. ROAD DIST. NO.		ILLINOIS FED. AID PROJECT		CONTRACT NO. 66B29	