

F.A.P. RTE.	SECTION	COUNTY	TOTAL SHEETS	SHEET NO.
840	(137B)I	IROQUOIS	5	1
		ILLINOIS	CONTRACT NO. 66B32	

STATE OF ILLINOIS
DEPARTMENT OF TRANSPORTATION
DIVISION OF HIGHWAYS

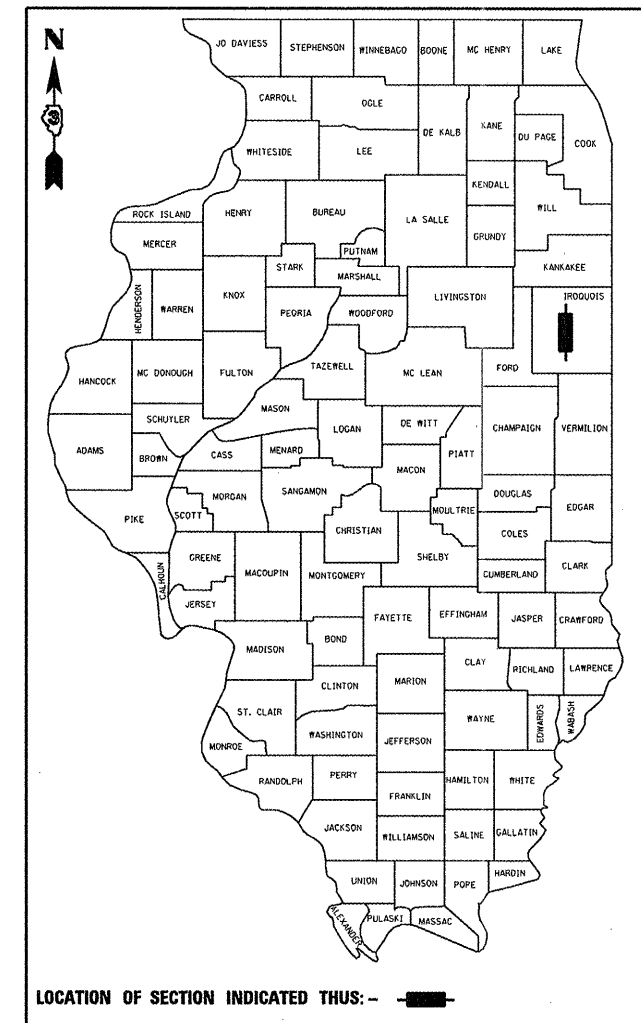
PROPOSED
HIGHWAY PLANS

FAP ROUTE 840 (IL 49)
SECTION (137B)I

BRIDGE REPAIR
IROQUOIS COUNTY

C-93-102-11

D-93-078-11



LOCATION OF SECTION INDICATED THUS: — ■ —

MINOR ARTERIAL

FAP RTE. 840 (IL 49)

2010

ADT	2100
P.V.	92.8%
S.U.	2.4%
M.U.	4.8%

STATE OF ILLINOIS
DEPARTMENT OF TRANSPORTATION
DIVISION OF HIGHWAYS

SUBMITTED 4/7 20 11
Eve S. Therkalden
DEPUTY DIRECTOR OF HIGHWAYS, REGION ENGINEER
May 13 20 11
Scott E. Stett, P.E.
ENGINEER OF DESIGN AND ENVIRONMENT
May 13 20 11
Christine M. Reed
DIRECTOR OF HIGHWAYS, CHIEF ENGINEER

PRINTED BY THE AUTHORITY
OF THE STATE OF ILLINOIS

INDEX OF SHEETS

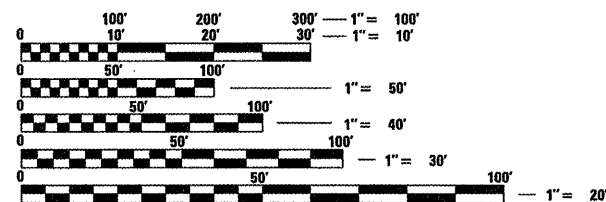
1. COVER SHEET
2. GENERAL NOTES
3. SUMMARY OF QUANTITIES
4. TYPICAL SECTION
5. REPAIR DETAILS - S.N. 038-0119

STANDARDS

- | | |
|-----------|--|
| 001006 | DECIMAL OF AN INCH AND OF A FOOT |
| 701001-02 | OFF-ROAD OPERATIONS 2L, 2W, MORE THAN 4.5 m (15') AWAY |
| 701006-03 | OFF-ROAD OPERATIONS 2L, 2W, 4.5 m (15') TO 600 mm (24") FROM PAVEMENT EDGE |
| 701201-04 | LANE CLOSURE, 2L, 2W, DAY ONLY, FOR SPEEDS ≥ 45 MPH |
| 701301-04 | LANE CLOSURE, 2L, 2W, SHORT TIME OPERATIONS |
| 701901-01 | TRAFFIC CONTROL DEVICES |

PROJECT LOCATION

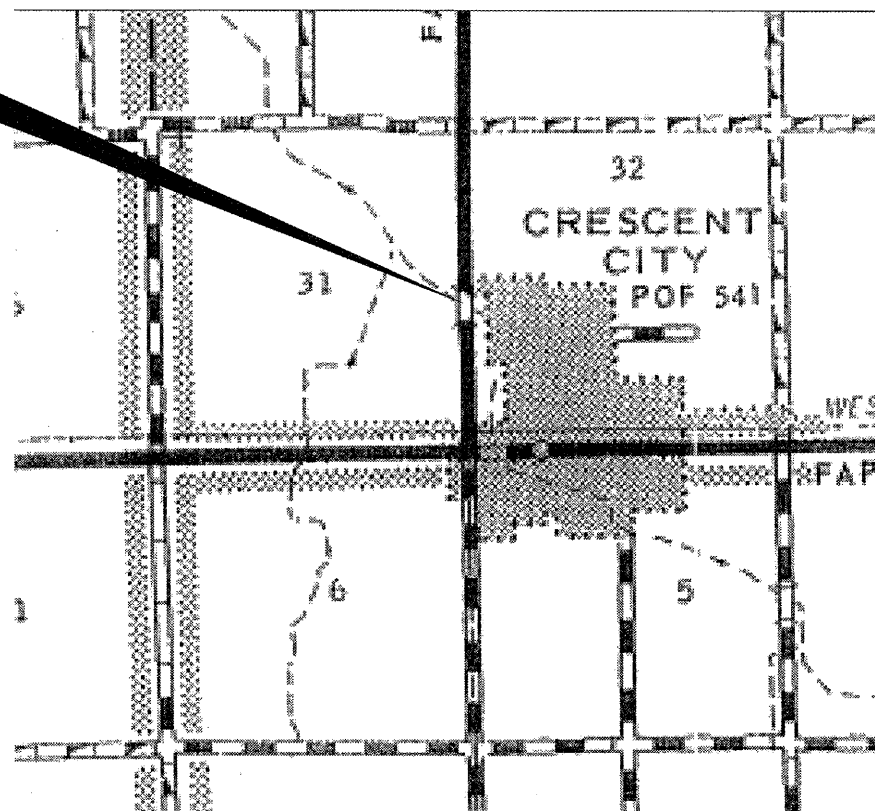
S.N. 038-0119
CARRYING FAP ROUTE 840 (IL 49)
OVER A DITCH APPROXIMATELY
0.48 MILES NORTH OF US ROUTE 24



FULL SIZE PLANS HAVE BEEN PREPARED USING STANDARD ENGINEERING SCALES. REDUCED SIZED PLANS WILL NOT CONFORM TO STANDARD SCALES. IN MAKING MEASUREMENTS ON REDUCED PLANS, THE ABOVE SCALES MAY BE USED.

J.U.L.I.E.
JOINT UTILITY LOCATION INFORMATION FOR EXCAVATION
1-800-892-0123
OR 811

PROJECT ENGINEER: JOE KANNEL P.E.
UNIT CHIEF: RON WOODSHANK
TOWNSHIP: CRECENT
CONTRACT NO. 66B32



POINT LOCATION

GENERAL NOTES

PLAN DIMENSIONS AND DETAILS RELATIVE TO EXISTING PLANS ARE SUBJECT TO ROUTINE VARIATIONS. THE CONTRACTOR SHALL FIELD VERIFY EXISTING DIMENSIONS AND DETAILS AFFECTING NEW CONSTRUCTION AND MAKE NECESSARY APPROVED ADJUSTMENTS PRIOR TO CONSTRUCTION OR ORDERING OF MATERIALS. SUCH VARIATIONS SHALL NOT BE CAUSE FOR ADDITIONAL COMPENSATION FOR A CHANGE IN THE SCOPE OF THE WORK. HOWEVER, THE CONTRACTOR WILL BE PAID FOR THE QUANTITY FURNISHED BASED UPON THE UNIT BID PRICE FOR THE WORK.

FOR STABILIZATION, ALL TYPE III BARRICADES SHALL REQUIRE A MINIMUM OF FOUR SAND BAGS PER BARRICADE.

ANY REFERENCE TO A STANDARD IN THESE PLANS SHALL BE INTERPRETED TO MEAN THE EDITION AS INDICATED BY THE SUBNUMBER LISTED ON THE INDEX OF SHEETS OR THE COPY OF THE STANDARD INCLUDED IN THESE PLANS.

DATE: 4/7/2011

PREPARED BY: Dave Broviak
DISTRICT STUDIES & PLANS ENGINEER

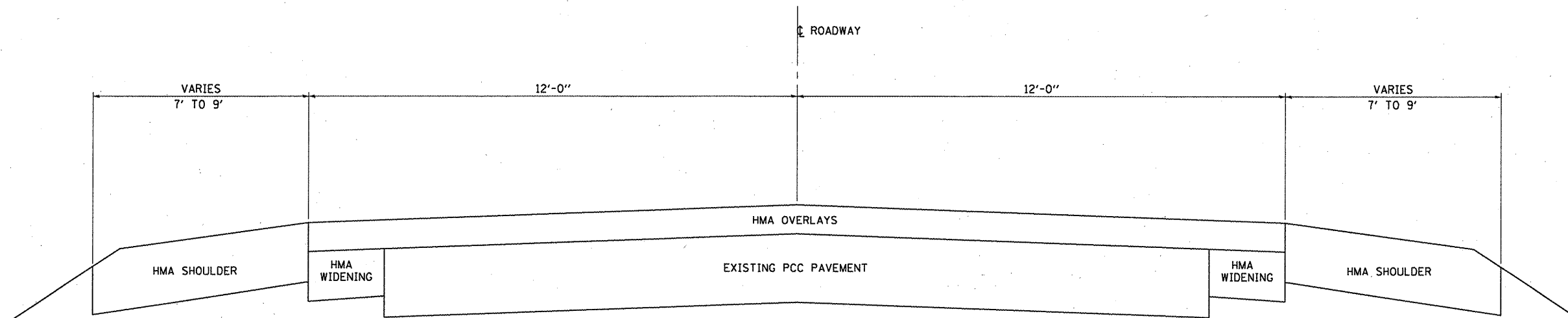
EXAMINED BY: [Signature]
DISTRICT CONSTRUCTION ENGINEER

Wayne L. Phillips
DISTRICT MATERIALS ENGINEER

[Signature]
DISTRICT OPERATIONS ENGINEER

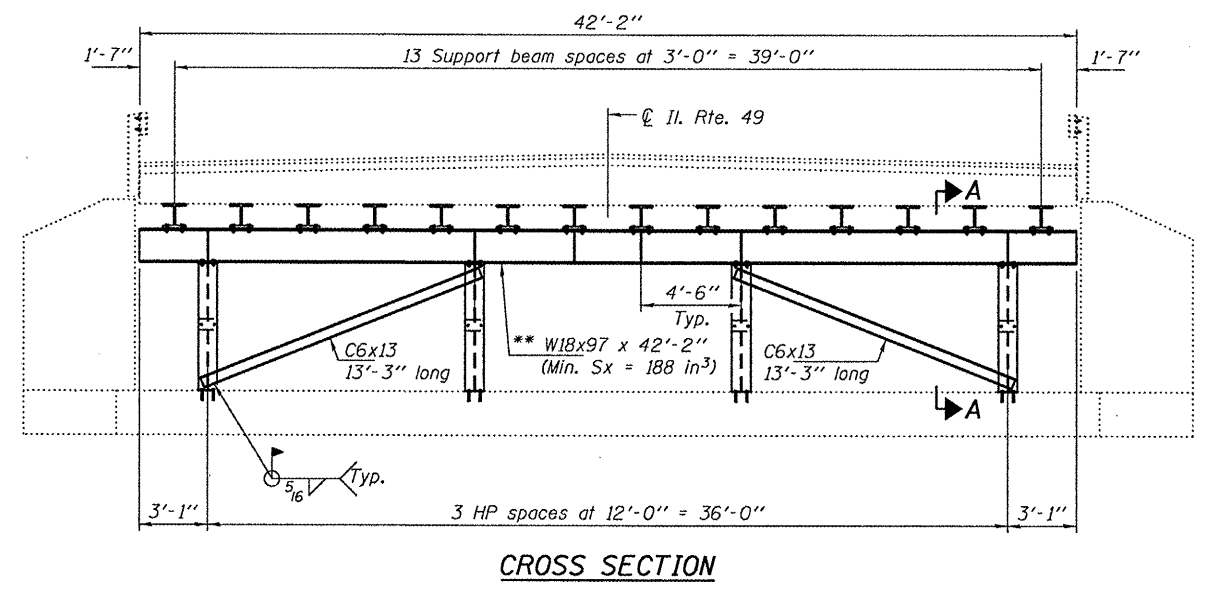
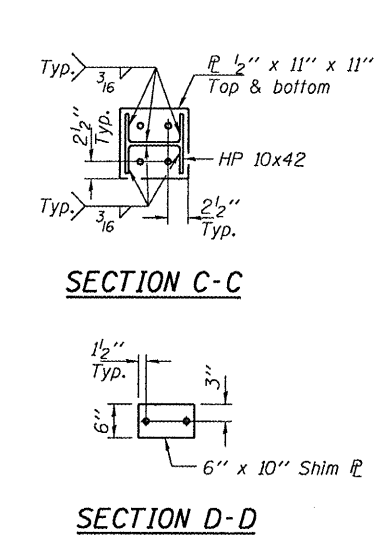
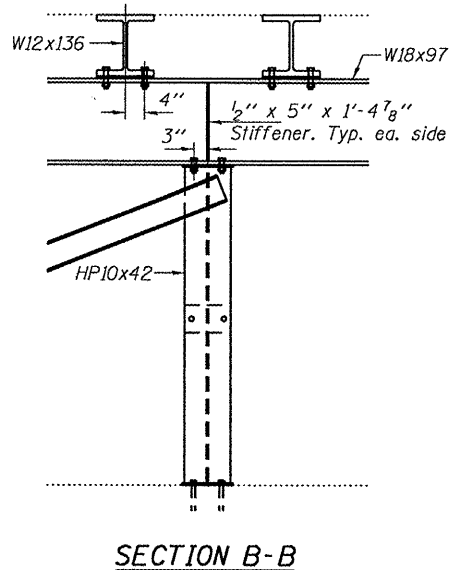
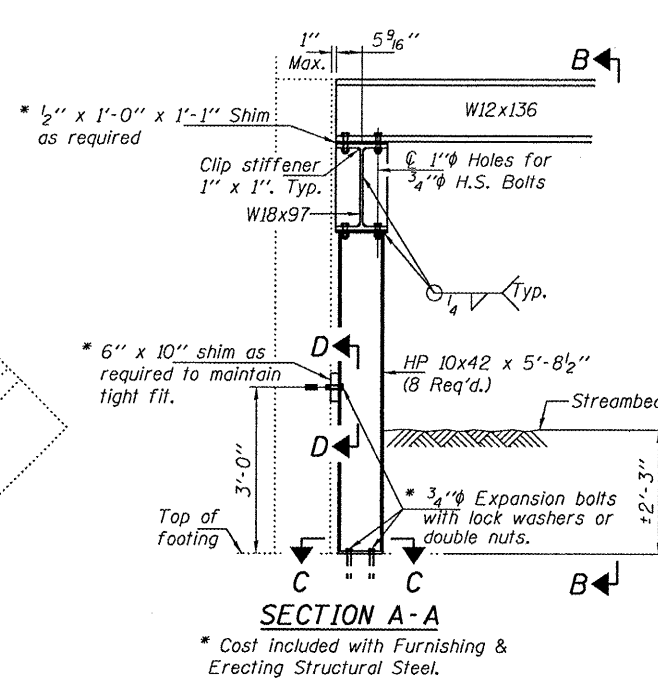
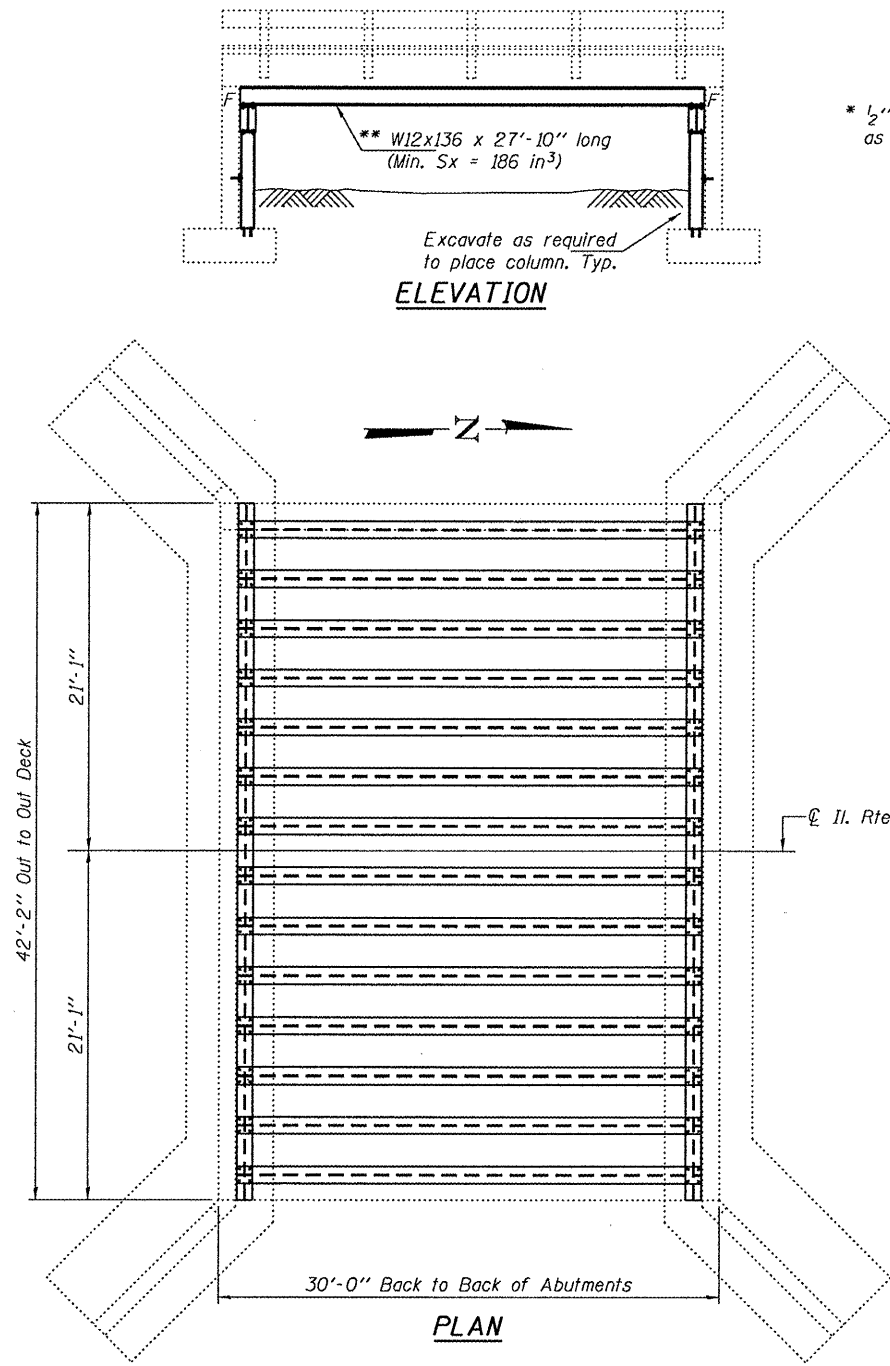
FILE NAME =	USER NAME = poteluj	DESIGNED - RON_WOODSHANK	REVISED -	STATE OF ILLINOIS DEPARTMENT OF TRANSPORTATION	GENERAL NOTES	F.A.P. RTE.	SECTION	COUNTY	TOTAL SHEETS	SHEET NO.
c:\pw_work\pwidot\poteluj\d0260724\0366832-shr-details.DGN	DRAWN - RON_WOODSHANK	REVISED -	840			(137B)	IROQUOIS	5	2	
PLOT SCALE = 100.0242' / IN.	CHECKED -	REVISED -	CONTRACT NO. 66B32							
PLOT DATE = Apr 07, 2011 - 09:02:58 AM	DATE -	REVISED -	ILLINOIS FED. AID PROJECT							
				SCALE: _____ SHEET NO. 1 OF 1 SHEETS STA. _____ TO STA. _____						

CODE NO.	ITEM	UNIT	TOTAL QUANTITY	CONSTR. CODE
				100% STATE STRUCTURE 0040 RURAL
50500405	FURNISHING AND ERECTING STRUCTURAL STEEL	POUND	64,480	64,480
67100100	MOBILIZATION	L SUM	1	1
70100450	TRAFFIC CONTROL AND PROTECTION, STANDARD 701201	L SUM	1	1



TYPICAL SECTION

FILE NAME =	USER NAME = potelyj	DESIGNED - RQN_WOODSHANK	REVISED -	STATE OF ILLINOIS DEPARTMENT OF TRANSPORTATION	TYPICAL SECTION	F.A.P. RTE.	SECTION	COUNTY	TOTAL SHEETS	SHEET NO.
cs:\pw_work\pwidot\potelyj\d0260724\036832-sht-details.DGN	DRAWN - RQN_WOODSHANK	REVISED -	840			(137B)	IROQUOIS	5	4	
PLOT SCALE = 99.9980 / IN.	CHECKED -	REVISED -	CONTRACT NO. 66B32							
PLOT DATE = Apr 07, 2011 - 09:03:41 AM	DATE -	REVISED -	ILLINOIS FED. AID PROJECT							
				SCALE: _____	SHEET NO. 1 OF 1 SHEETS	STA. _____ TO STA. _____				



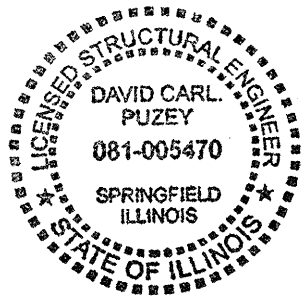
GENERAL NOTES

All structural steel shall conform to AASHTO Classification M-270 Gr. 36, unless otherwise noted.
 Plan dimensions and details relative to existing plans are subject to nominal construction variations. The Contractor shall field verify existing dimensions and details affecting new construction and make necessary approved adjustments prior to construction or ordering of materials. Such variations shall not be cause for additional compensation for a change in scope of the work, however, the Contractor will be paid for the quantity actually furnished at the unit price bid for the work.
 The contractor is advised that the existing slab is in a deteriorated condition with reduced load carrying capacity. It is the contractors responsibility to account for the condition of the slab when developing construction procedures.
 See Section 584 of the Standard Specifications for Epoxy Grouting of Threaded Rods; Minimum embedment 9".
 If the contractor's procedure for placement of beams involves placement of cranes or other heavy equipment on the bridge, a detailed procedure shall be submitted to the Engineer for approval. The procedure shall include calculations, prepared and sealed by an Illinois Licensed Structural Engineer, verifying that the equipment and procedure used will not overstress the existing slab. To distribute load and protect the existing surface, in all cases a double layer mat of heavy timbers shall be used at all times under crane tracks or wheels and any outriggers in the down position. If necessary, shims shall be used under the crane mat to ensure uniform contact with the underlying surface.
 The cost of epoxy grouting threaded rods on the abutments shall be included with Furnishing and Erecting Structural Steel.
 The Contractor has the option of using used steel. See Special Provisions.

** Contractor is to verify beam length prior to ordering material. Other sections meeting the section modulus requirements shown may be allowed subject to approval by the Bureau of Bridges and Structures. Maximum Girder depth = 18". No additional payment will be allowed if the contractor chooses a heavier steel section than the one specified in the plans.

TOTAL BILL OF MATERIAL

ITEM	UNIT	QUANTITY
Furnishing and Erecting Structural Steel	Pound	64780



DESIGNED	EXAMINED	DATE	MAY 4, 2011
CHECKED	PASSED		
DRAWN			
CHECKED			

STATE OF ILLINOIS
DEPARTMENT OF TRANSPORTATION

PLAN AND ELEVATION
SN 038-0119
SHEET NO. 1 OF 1 SHEETS

F.A. RTE.	SECTION	COUNTY	TOTAL SHEETS	SHEET NO.
940	(1378)1	IRROUOIS	5	5
CONTRACT NO. 66B32				
ILLINOIS FED. AID PROJECT				