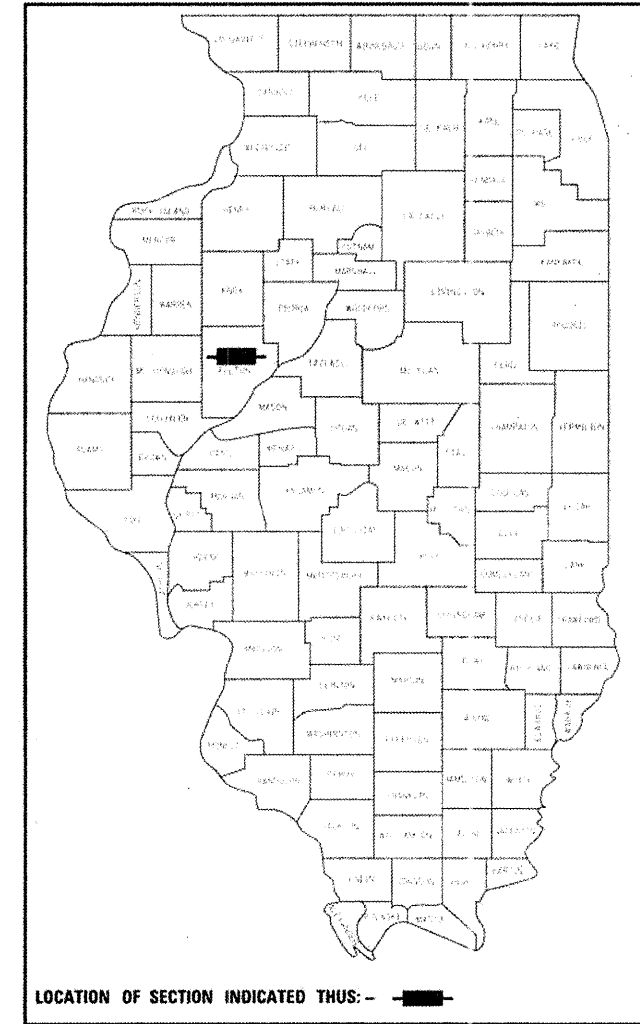


*125+6 = 131



LOCATION OF SECTION INDICATED THUS: - [black rectangle]

STATE OF ILLINOIS
DEPARTMENT OF TRANSPORTATION
DIVISION OF HIGHWAYS

**PROPOSED
HIGHWAY PLANS**

F.A.P. ROUTE 685 /22
SECTION (41Z, 135) R, N; (1CS) I
PROJECT HSIP-F-000S(841)
RECONSTRUCTION, RESURFACING
FULTON COUNTY

C-94-064-09

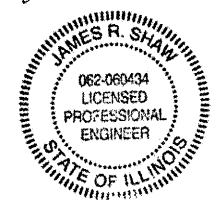
FOR INDEX OF SHEETS, SEE SHEET NO. 04

PROFESSIONAL ENGINEER'S CERTIFICATION

I, JAMES R. SHAW, A LICENSED PROFESSIONAL ENGINEER OF ILLINOIS, HEREBY CERTIFY THAT THIS SUBMISSION, WITH THE EXCEPTION OF THE TRAFFIC SIGNAL PLANS, QUANTITIES, AND SPECIFICATIONS, WAS PREPARED ON BEHALF OF THE ILLINOIS DEPARTMENT OF TRANSPORTATION, BY INFRASTRUCTURE ENGINEERING UNDER MY PERSONAL DIRECTION. THIS TECHNICAL SUBMISSION IS INTENDED TO BE USED AS AN INTEGRAL PART OF AND IN CONJUNCTION WITH THE PROJECT SPECIFICATIONS AND CONTRACT DOCUMENTS.

DATED THIS 21st DAY OF December, A.D., 2010.

ENGINEER
ILLINOIS REG. PROF. ENGINEER NO. 062-060434 EXPIRATION DATE 11-30-2011



DOES NOT APPLY TO TRAFFIC SIGNAL SHEETS (61-83), TRAFFIC SIGNAL QUANTITIES, OR TRAFFIC SIGNAL SPECIFICATIONS

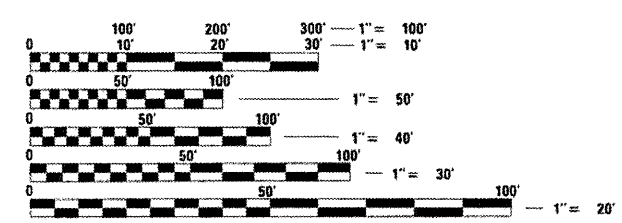
END IMPROVEMENT
STA. 113 + 75.00
(MAIN STREET)

END IMPROVEMENT
STA. 74 + 27.00
N. (1ST AVENUE)

BEGIN IMPROVEMENT
STA. 5 + 90.00
(LOCUST STREET)

N
LOCATION MAP
NOT TO SCALE

END IMPROVEMENT
STA. 35 + 00.00
(LOCUST STREET)



FULL SIZE PLANS HAVE BEEN PREPARED USING STANDARD ENGINEERING SCALES. REDUCED SIZED PLANS WILL NOT CONFORM TO STANDARD SCALES. IN MAKING MEASUREMENTS ON REDUCED PLANS, THE ABOVE SCALES MAY BE USED.

J.U.L.I.E.
JOINT UTILITY LOCATION INFORMATION FOR EXCAVATION
1-800-892-0123
OR 811



END IMPROVEMENT
STA. 103 + 82.54
S. (MAIN STREET)

END IMPROVEMENT
STA. 68 + 70.47
S. (1ST AVENUE)

CONSULTANT: INFRASTRUCTURE ENGINEERING, INC.
LAISON ENGINEER: MICHAEL J. BOYER

CONTRACT NO. 68877

GROSS LENGTH = 3010 FT. = 0.57 MILE
NET LENGTH = 3010 FT. = 0.57 MILE
DESIGN DESIGNATION 14981(20) ARTERIAL 5.51 9PCC-20)

STATE OF ILLINOIS
DEPARTMENT OF TRANSPORTATION
DIVISION OF HIGHWAYS

SUBMITTED Dec 20 20 10

Scott E. Stitt P.E. Jr.
DEPUTY DIRECTOR OF HIGHWAYS, REGION ENGINEER
acting
ENGINEER OF DESIGN AND ENVIRONMENT

Christine M. Reed
DIRECTOR OF HIGHWAYS, CHIEF ENGINEER

**PRINTED BY THE AUTHORITY
OF THE STATE OF ILLINOIS**