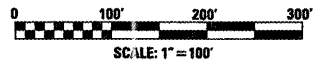
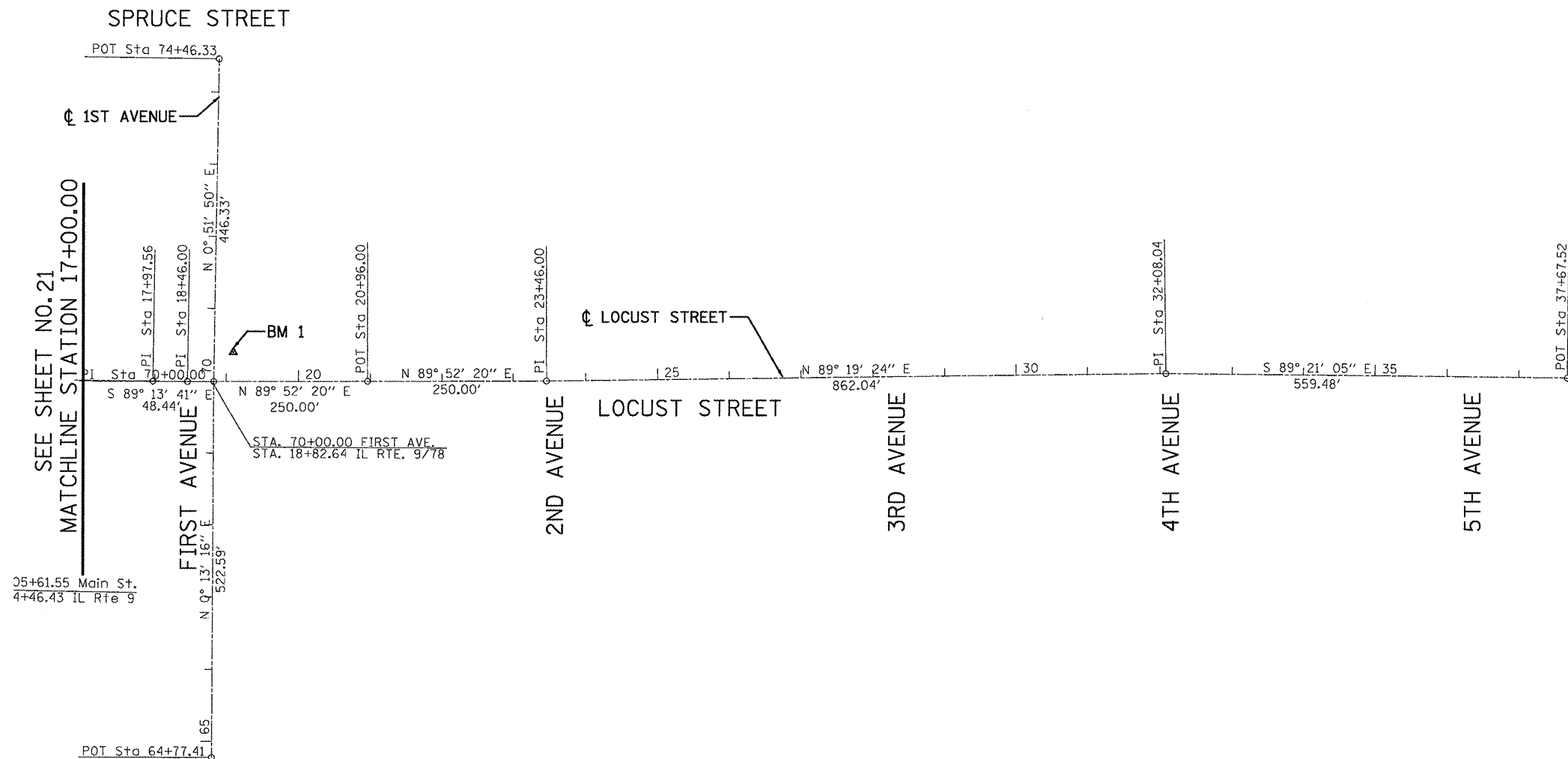
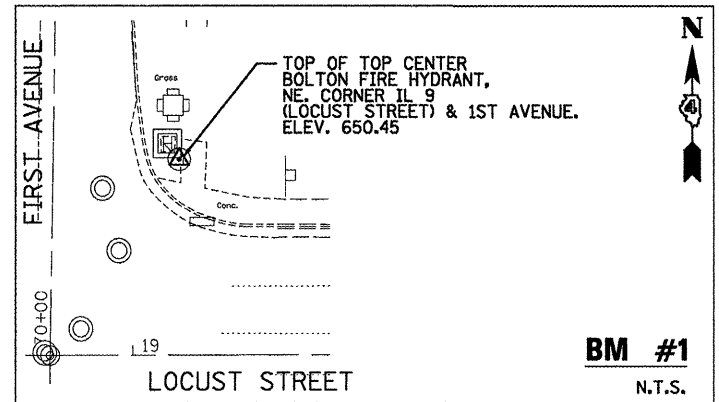


LOCUST STREET ALIGNMENT	
POT STA. 17+97.56 N 1417387.723 E 2333679.485	POT STA. 18+46.00 N 1417387.070 E 2333727.920
POT STA. 20+96.00 N 1417387.627 E 2333977.920	POT STA. 23+46.00 N 1417388.187 E 2334227.919
POT STA. 32+08.04 N 1417398.369 E 2335089.898	POT STA. 37+67.52 N 1417392.034 E 2335649.339

FIRST AVENUE ALIGNMENT	
POT STA. 64+77.41 N 1416864.566 E 2333762.545	POT STA. 70+00.00 N 1417387.152 E 2333764.560
POT STA. 74+46.33 N 1417833.430 E 2333771.289	



FILE NAME = P:\P-09\2193 - IDOT DUR\Task-04\DWG\SHY\26_D4-9420909-ATB02.dgn	USER NAME = ..2193 Task 4..	DESIGNED AJ	REVISED -	<p>INFRASTRUCTURE ENGINEERING 456 Fulton Street Suite 104 Peoria, IL 61602 P:301.672.6200 F:301.672.6210 www.infrastructureeng.com</p>	<p align="center">STATE OF ILLINOIS DEPARTMENT OF TRANSPORTATION</p>	<p align="center">ALIGNMENT, TIES AND BENCHMARKS LOCUST STREET-RECONSTRUCTION</p>	F.A.P. RTE. = 685/22	SECTION = (41Z, 135) R, N ₂ (1CS) I	COUNTY = FULTON	TOTAL SHEETS = 125	SHEET NO. = 22
PLOT SCALE = 1:100	CHECKED JRS	REVISED -	CONTRACT NO. 68877								
PLOT DATE = 12/21/2010	DATE = 12/21/2010	REVISED -	ILLINOIS FED. AID PROJECT D4-94-009-09								
SCALE: 1"=100'-00"		SHEET NO. 02OF 02 SHEETS					STA. 17+00.00 TO STA. 36+00.00				