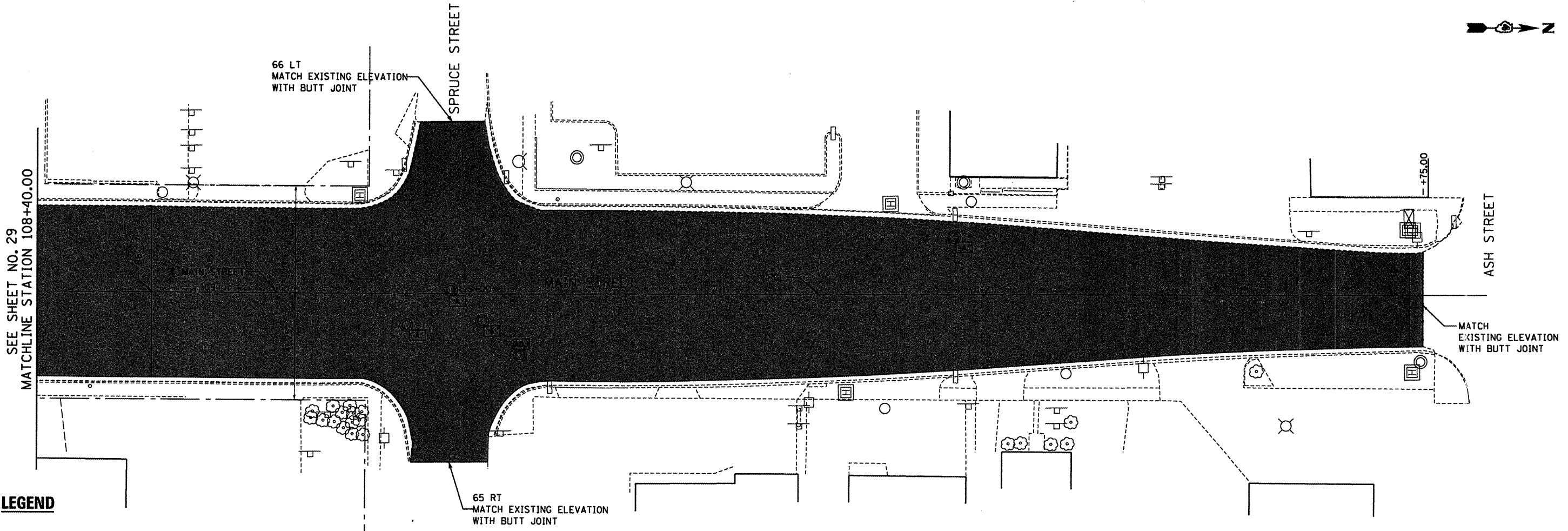


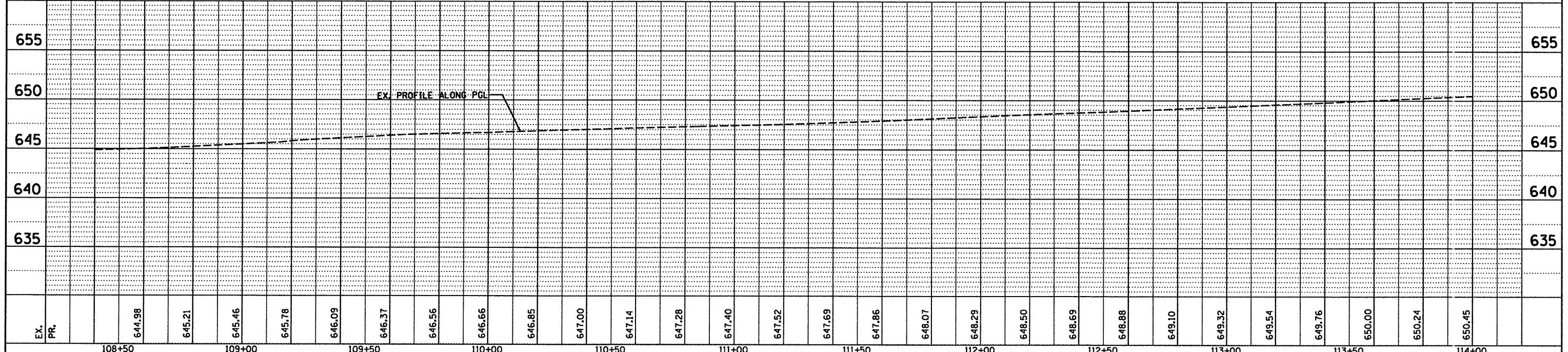
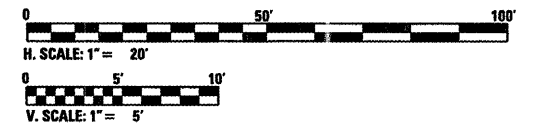
PLAN	DATE
SURVEYED	BY
ALIGNED	DATE
GRADES CHECKED	
RT. OF WAY CHECKED	
NO. OF	
ADD. FILE NAME	

PROFILE	DATE
SURVEYED	BY
GRADES CHECKED	
PLAN NOTED	
STRUCTURE NOTATIONS CHECKED	
NO.	



**LEGEND**

- HOT-MIX ASPHALT SURFACE REMOVAL, 3/4" PROPOSED HOT-MIX ASPHALT SURFACE COURSE, MIX "D", N50, 1- 1/2"
- ADJUST FRAME LID/GRATE
- STRUCTURE TO BE ADJUSTED



FILE NAME =	USER NAME = .2193 Task 4.	DESIGNED RP	REVISED -	<p><b>INFRASTRUCTURE ENGINEERING</b>  <small>495 Fulton Street   Suite 314   Peoria, IL 61602        P 301.681.2000   F 301.681.2022   www.infrastructure-eng.com</small></p>	<p align="center"><b>STATE OF ILLINOIS</b>  <b>DEPARTMENT OF TRANSPORTATION</b></p>		<p align="center"><b>PLAN AND PROFILE</b>  <b>MAIN STREET</b></p>		F.A.P. RTE.	SECTION	COUNTY	TOTAL SHEETS	SHEET NO.
P:\NP-09\2193 - IDOT DUR\Task-04\DWG\SH1103_04-9408909-plan05.dgn	DRAWN SV	REVISED -	885/22						(41Z, 135) R, N <sub>1</sub> (1CS) I	FULTON	125	30	
PLOT SCALE = 1:20	CHECKED JRS	REVISED -	CONTRACT NO. 68877										
PLOT DATE = 12/21/2010	DATE 12/21/2010	REVISED -	ILLINOIS FED. AID PROJECT 04-94-009-09										
SCALE: H. 1" = 20' V. 1" = 5'				SHEET NO. 05 OF 07 SHEETS		STA. 108+40.00 TO STA. 114+00.00							