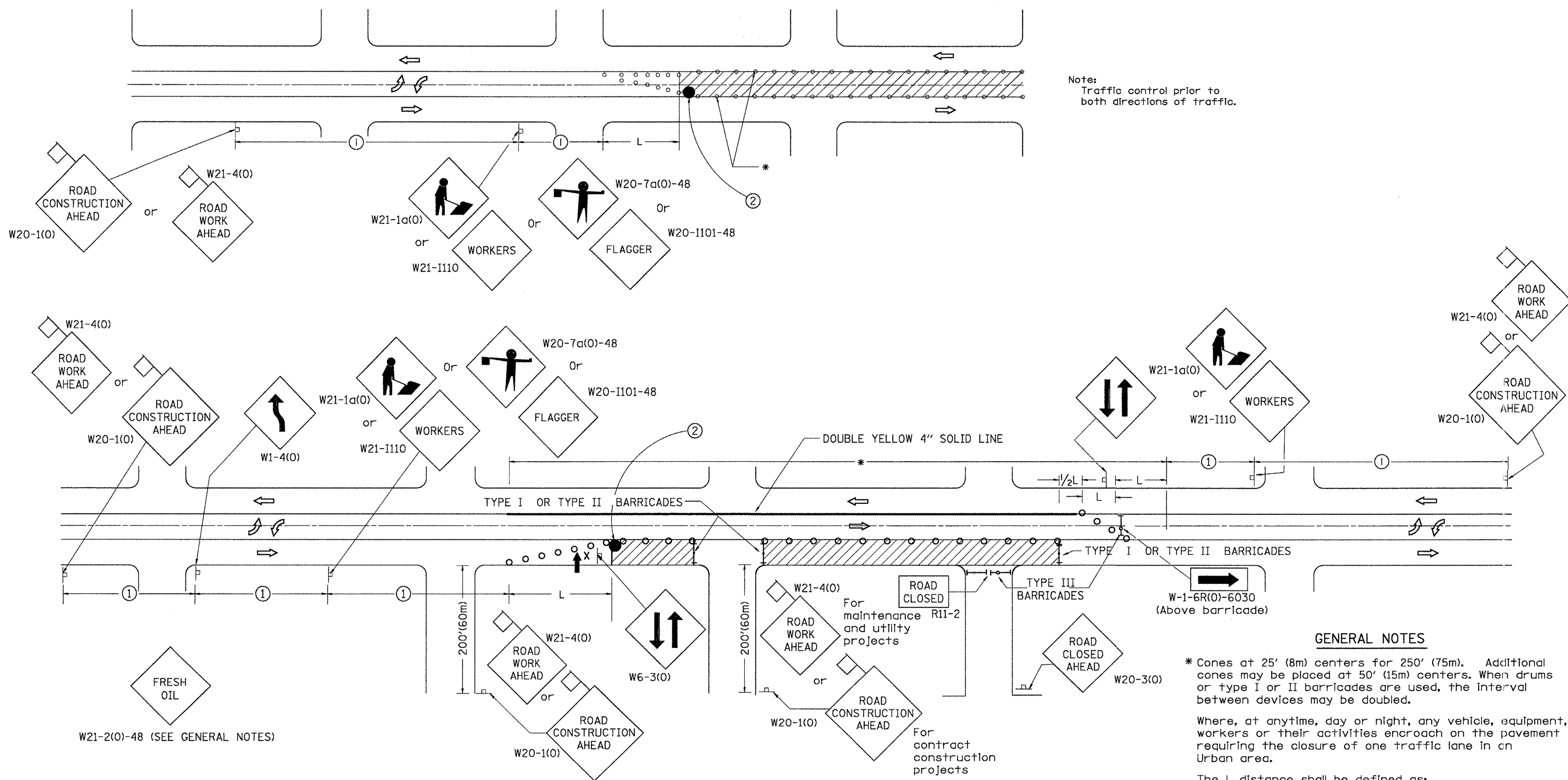


DESIGNER NOTES:
 1. This drawing based upon State Std. 701501
 2. FRESH OIL sign requirement added
 3. Include District Special Provision



Note:
Traffic control prior to both directions of traffic.

SIGN SPACING	
Posted Speed	Sign Spacing
55	500' (164m)
50-45	350' (115m)
<45	200' (60m)

① = Refer to SIGN SPACING TABLE for distances.
 ② = Required for speeds > 40 MPH

SYMBOLS

- Sign on portable or permanent support
- Cone, drum or barricade
- Work area
- Arrow board
- 18x18 (450x450) (Minimum) orange flag
- Drum or barricade with flashing light
- High level warning device
- Flagger with traffic control sign

GENERAL NOTES

* Cones at 25' (8m) centers for 250' (75m). Additional cones may be placed at 50' (15m) centers. When drums or type I or II barricades are used, the interval between devices may be doubled.

Where, at anytime, day or night, any vehicle, equipment, workers or their activities encroach on the pavement requiring the closure of one traffic lane in an Urban area.

The L distance shall be defined as:
 ENGLISH METRIC
 $L = WS^2/60$ $L = WS^2/150$
 Where: W = Width of closure in feet (meters).
 S = Normal posted speed limit in mph (km/h).

If the work operation is performed between 9:00 a.m. and 3:00 p.m. and does not exceed 15 min Traffic protection shall be as shown for Std. 701301.

Form "BT 725" is required.

All dimensions are in Inches (millimeters) unless otherwise noted.

01-01-97	RENUM. F-6.04, NEW REVISION BOX, REVISED TITLE	T.P.	10-16-06	REVISED TO 2007 SPEC.	M.A.
06-01-97	REVISE SYMBOLS NOTE	S.N.			
03-09-99	REVISE SYMBOLS & NOTES	S.N.			
07-07-00	REVISED DETAIL	S.N.			

**STATE OF ILLINOIS
DEPARTMENT OF TRANSPORTATION**

LANE CLOSURE, 2L, 2W WITH 2W LEFT TURN LANE FOR SPEEDS < 45MPH (STANDARD 701501 SPECIAL)

NOT TO SCALE

CADD STD. 701501-D4

F.A. RTE.	SECTION	COUNTY	TOTAL SHEETS	SHEET NO.
685/22	(41Z, 135) R, N, (1CS) I	FULTON	125	105
CONTRACT NO. 68877			ILLINOIS FED. AID PROJECT D4-94-009-09	