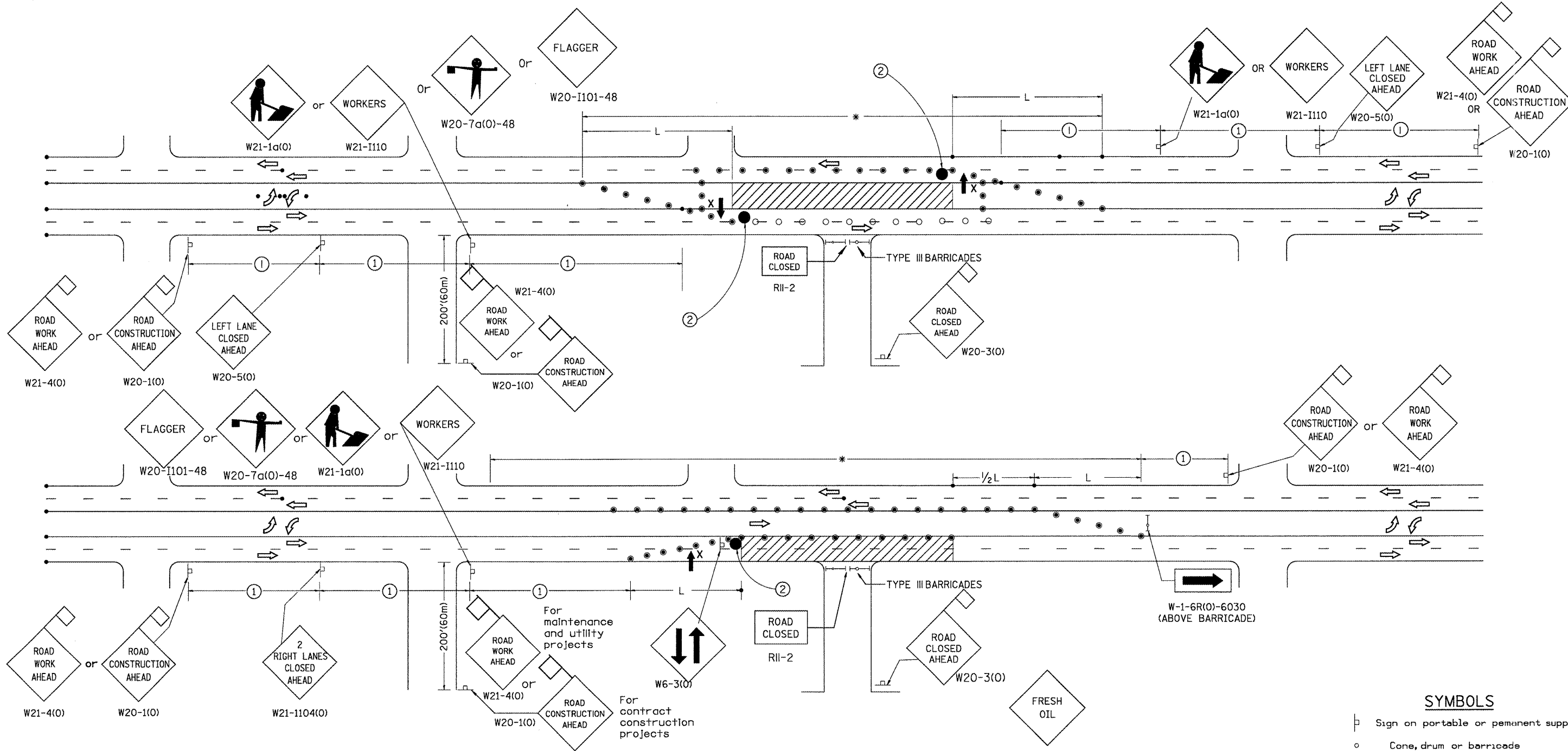


DESIGNER NOTES:  
 1. THIS DRAWING BASED UPON STATE STD. 701606  
 2. FRESH OIL SIGN REQUIREMENT ADDED  
 3. INCLUDE DISTRICT SPECIAL PROVISION



**GENERAL NOTES**

Cones at 25' (8m) centers for 250' (75m). Additional cones may be placed at 50' (15m) centers. When drums or type I or II barricades are used, the interval between devices may be doubled.

Where, at anytime, day or night, any vehicle, equipment, workers or their activities encroach on the pavement requiring the closure of one traffic lane in an Urban area.

The L distance shall be defined as:  
 ENGLISH METRIC  
 $L = WS^2/60$      $L = WS^2/150$

Where: W = Width of closure in feet(meters).  
 S = Normal posted speed limit in mph(km/h).

If the work operation is performed between 9:00 a.m. and 3:00 p.m. and does not exceed 15 min Traffic protection shall be as shown for Std. 701301.

Form "BT 725" is required.

SIGN SPACING	
Posted Speed	Sign Spacing
55	500' (164m)
50-45	350' (115m)
<45	200' (60m)

- ① = Refer to SIGN SPACING TABLE for distances.
- ② = Required for speeds > 40 MPH

**SYMBOLS**

- Sign on portable or permanent support
- Cone, drum or barricade
- Work area
- Arrow board
- 18x18(450x450) (Minimum) orange flag
- Drum or barricade with flashing light
- High level warning device
- Flagger with traffic control sign

W21-2(0)-48 (SEE GENERAL NOTES)

All dimensions are in inches (millimeters) unless otherwise noted.

01-01-97	RENUM. F-6.06, NEW REVISIONS BOX, REVISED TITLE	T.P.	10-16-06	REISED TO 2007 SPEC.	M.A.
03-11-97	CHANGE TITLE, ADD SHEET 2	S.N.			
06-01-97	REVISE SYMBOLS NOTE	S.N.			
03-09-99	REVISE SYMBOLS & NOTES	S.N.			

**STATE OF ILLINOIS  
 DEPARTMENT OF TRANSPORTATION**

**STANDARD 701606 (SPECIAL) URBAN LANE CLOSURE MULTILANE,  
 2-WAY WITH BIDIRECTIONAL LEFT TURN LANE  
 FOR SPEEDS <45 MPH**

NOT TO SCALE

SHT 1 OF 2  
 CADD STD. 701606-D4

F.A. RTE.	SECTION	COUNTY	TOTAL SHEETS	SHEET NO.
685/22	(41Z, 135) R, N, (1CS) I	FULTON	125	106
CONTRACT NO. 68877			ILLINOIS FED. AID PROJECT D4-94-009-09	