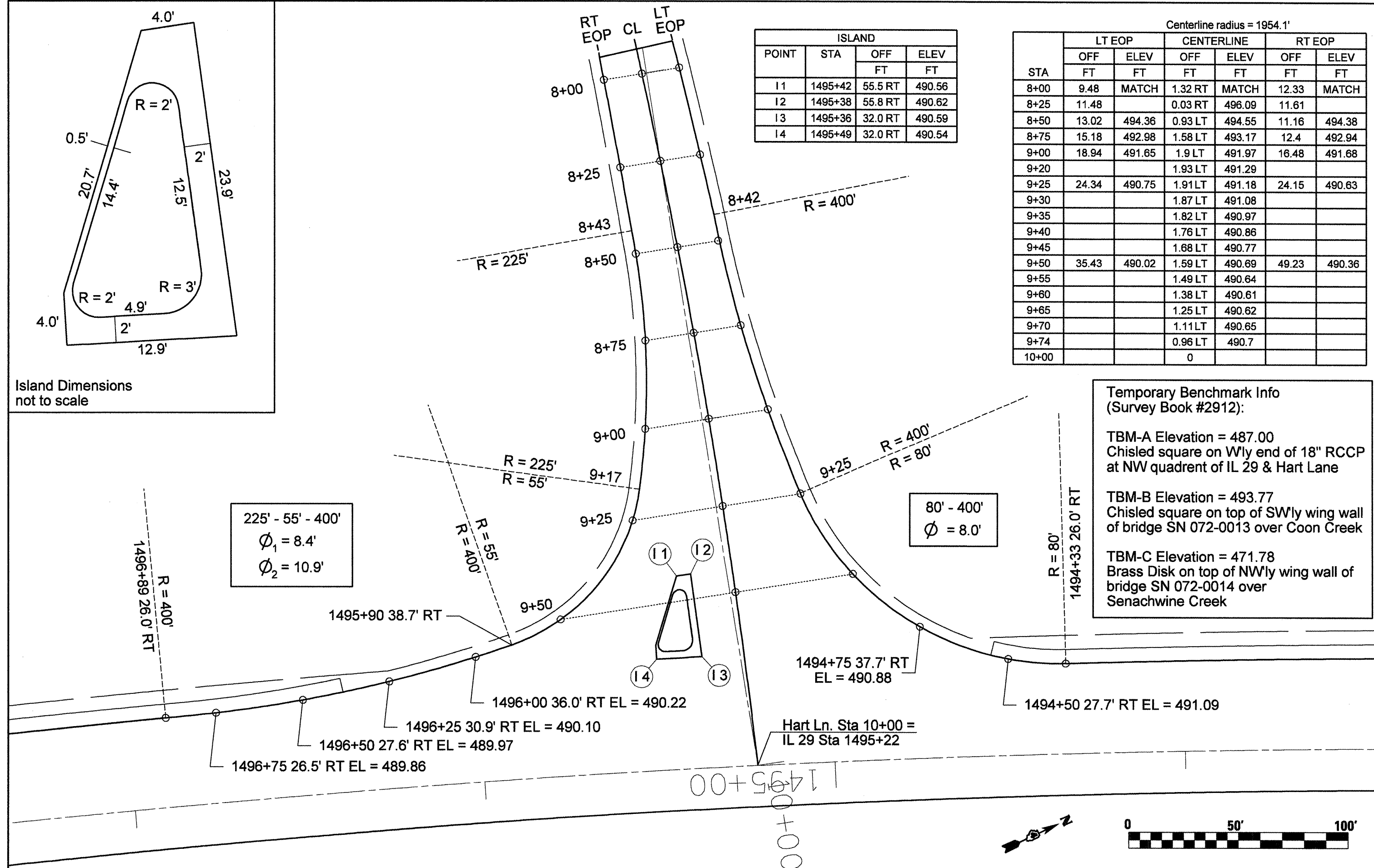


Island Dimensions  
not to scale

ISLAND			
POINT	STA	OFF	ELEV
		FT	FT
I1	1495+42	55.5 RT	490.56
I2	1495+38	55.8 RT	490.62
I3	1495+36	32.0 RT	490.59
I4	1495+49	32.0 RT	490.54

Centerline radius = 1954.1'

STA	LT EOP		CENTERLINE		RT EOP	
	OFF	ELEV	OFF	ELEV	OFF	ELEV
	FT	FT	FT	FT	FT	FT
8+00	9.48	MATCH	1.32 RT	MATCH	12.33	MATCH
8+25	11.48		0.03 RT	496.09	11.61	
8+50	13.02	494.36	0.93 LT	494.55	11.16	494.38
8+75	15.18	492.98	1.58 LT	493.17	12.4	492.94
9+00	18.94	491.65	1.9 LT	491.97	16.48	491.68
9+20			1.93 LT	491.29		
9+25	24.34	490.75	1.91 LT	491.18	24.15	490.63
9+30			1.87 LT	491.08		
9+35			1.82 LT	490.97		
9+40			1.76 LT	490.86		
9+45			1.68 LT	490.77		
9+50	35.43	490.02	1.59 LT	490.69	49.23	490.36
9+55			1.49 LT	490.64		
9+60			1.38 LT	490.61		
9+65			1.25 LT	490.62		
9+70			1.11 LT	490.65		
9+74			0.96 LT	490.7		
10+00			0			



Temporary Benchmark Info  
(Survey Book #2912):

TBM-A Elevation = 487.00  
Chisled square on W'ly end of 18" RCCP  
at NW quadrant of IL 29 & Hart Lane

TBM-B Elevation = 493.77  
Chisled square on top of SW'ly wing wall  
of bridge SN 072-0013 over Coon Creek

TBM-C Elevation = 471.78  
Brass Disk on top of NW'ly wing wall of  
bridge SN 072-0014 over  
Senachwine Creek

225' - 55' - 400'  
 $\phi_1 = 8.4'$   
 $\phi_2 = 10.9'$

80' - 400'  
 $\phi = 8.0'$