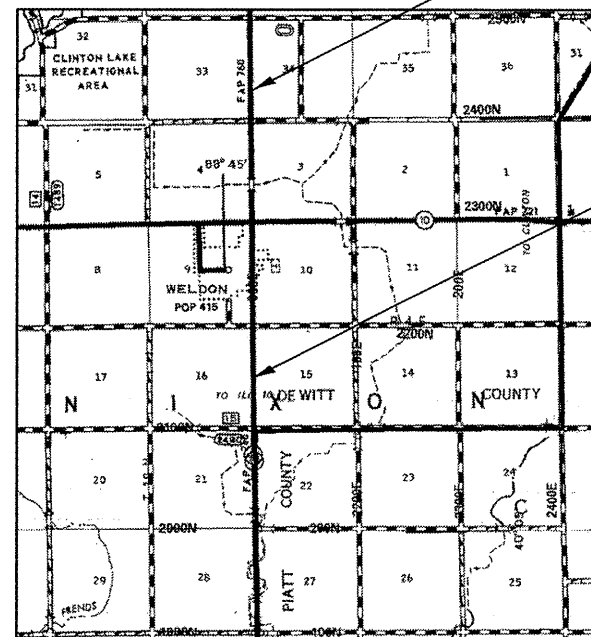


**LOCATION**

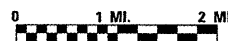
#1 & #2  
FAP 760 (IL 48)  
DEWITT COUNTY



S.N. 020-8033  
LOCATION #1  
STA. 122 + 60

S.N. 020-8034  
LOCATION #2  
STA. 1163 + 24

R 4 E, 3RD P.M.

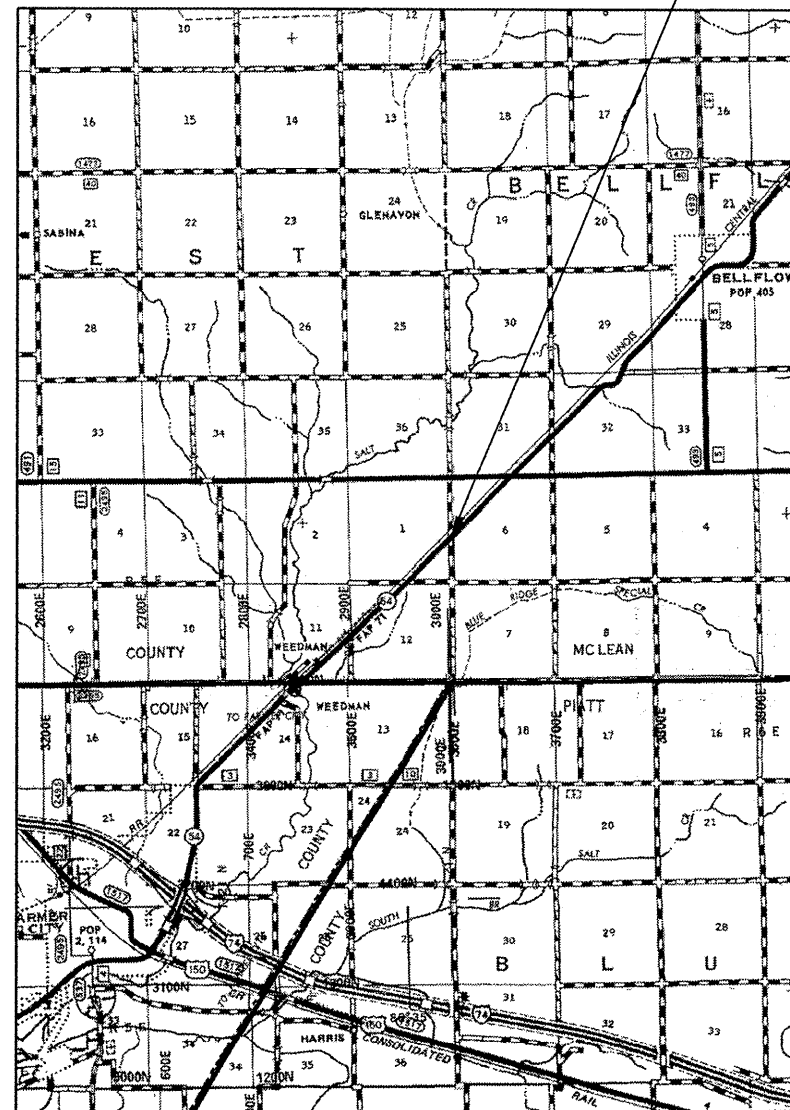


**LOCATION #1**  
PROJECT BEGINS STA. 122 + 55.50  
PROJECT ENDS STA. 122 + 64.50

**LOCATION #2**  
PROJECT BEGINS STA. 1163 + 18.50  
PROJECT ENDS STA. 1163 + 29.50

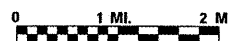
**LOCATION**

#3  
FAP 71 (IL 54)  
MCLEAN COUNTY



S.N. 057-8003  
LOCATION #3  
STA. 255 + 45

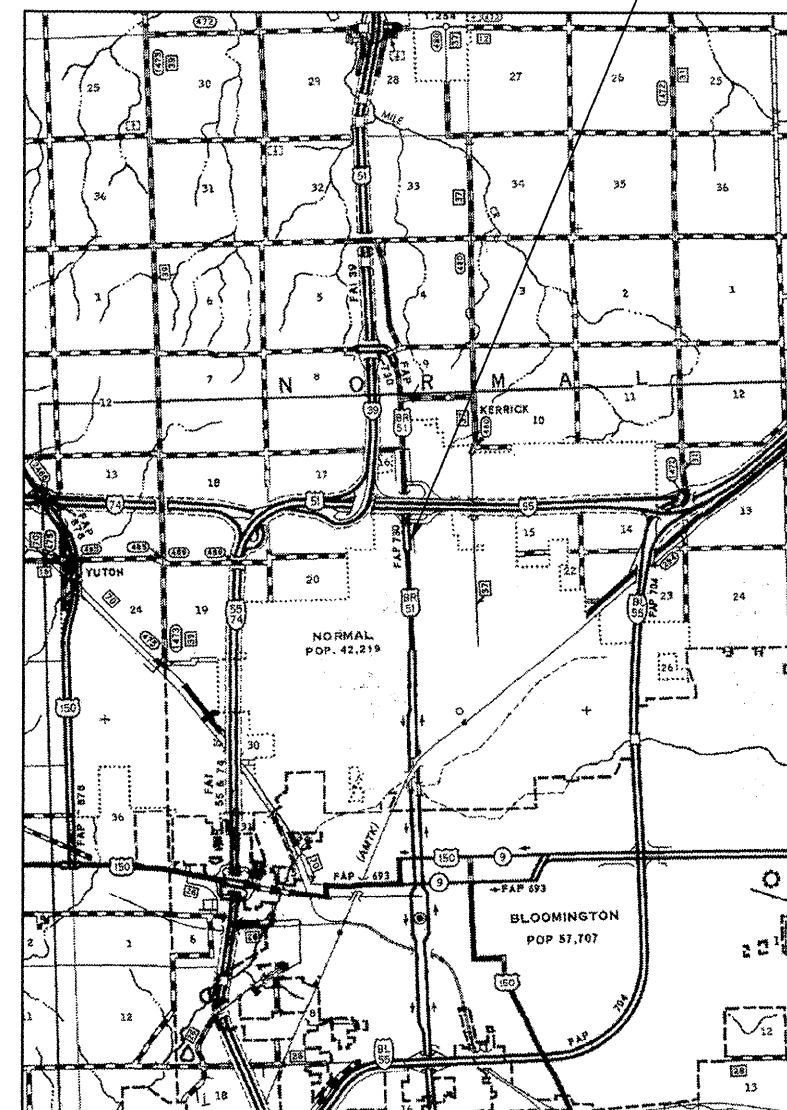
R 5 E | R 6 E, 3RD P.M.



**LOCATION #3**  
PROJECT BEGINS STA. 255 + 39.50  
PROJECT ENDS STA. 255 + 50.50

**LOCATION**

#4  
FAP 730 (US 51 BUSINESS)  
MCLEAN COUNTY



S.N. 057-8194  
LOCATION #4  
STA. 32 + 60

R 2 E, 3RD P.M.



**LOCATION #4**  
PROJECT BEGINS STA. 32 + 55.50  
PROJECT ENDS STA. 32 + 64.50

- ROUTES VARIOUS
- POSTING MITIGATION FY2011-1
- DEWITT / MCLEAN

|  |                   |            |           |
|--|-------------------|------------|-----------|
| FILE NAME =  | USER NAME = keyrb | DESIGNED - | REVISED - |
| c:\pw\work\pwidot\keyrb\d8248670\0570894-sht-cover.dgn |                   | DRAWN -    | REVISED - |
|  |                   | CHECKED -  | REVISED - |
|  |                   | DATE -     | REVISED - |
|  |                   |            |           |

**STATE OF ILLINOIS**  
**DEPARTMENT OF TRANSPORTATION**

|                      |           |           |              |
|----------------------|-----------|-----------|--------------|
| <b>LOCATION MAPS</b> |           |           |              |
| SCALE:               | SHEET NO. | OF SHEETS | STA. TO STA. |
|                      |           |           |              |

| F.A. RTE.                 | SECTION | COUNTY | TOTAL SHEETS | SHEET NO. |
|---------------------------|---------|--------|--------------|-----------|
|                           |         |        | 23           | 2         |
| CONTRACT NO. 70894        |         |        |              |           |
| ILLINOIS FED. AID PROJECT |         |        |              |           |