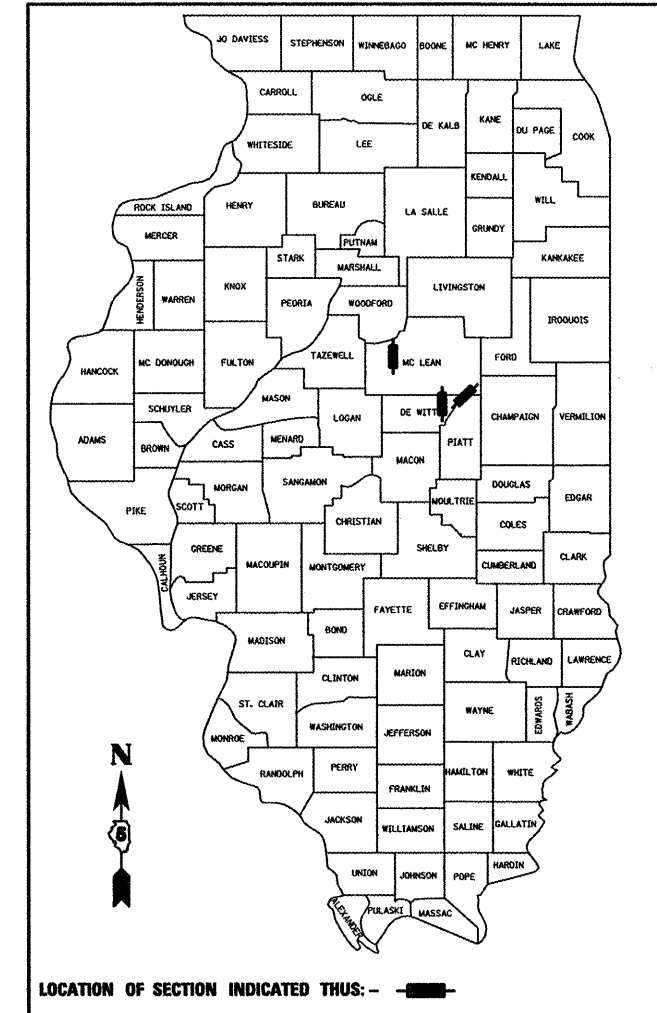


STATE OF ILLINOIS
DEPARTMENT OF TRANSPORTATION
DIVISION OF HIGHWAYS
PROPOSED
HIGHWAY PLANS
VARIOUS ROUTE
SECTION POSTING MITIGATION FY2011-1
CULVERT REHABILITATION
DEWITT /MCLEAN COUNTY
VARIOUS LOCATIONS (POSTING MITIGATION)

F.A. RTE.	SECTION	COUNTY	TOTAL SHEETS	SHEET NO.
*	**	***	23	1
		ILLINOIS	CONTRACT NO. 70894	

- * ROUTES VARIOUS
- ** POSTING MITIGATION FY2011-1
- *** DEWITT / MCLEAN

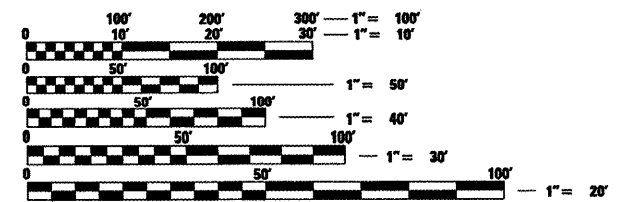
D-95-062-10



FOR LOCATION MAPS, SEE SHEET NO. 2
 FOR INDEX OF SHEETS, SEE SHEET NO. 3
 FOR SUMMARY OF QUANTITIES, SEE SHEET NO. 4

ADT:	LOCATION #1:	900 (2010)
	LOCATION #2:	1400 (2010)
	LOCATION #3:	1000 (2010)
	LOCATION #4:	13,700 (2010)

DESIGN DESIGNATION
N/A



FULL SIZE PLANS HAVE BEEN PREPARED USING STANDARD ENGINEERING SCALES. REDUCED SIZED PLANS WILL NOT CONFORM TO STANDARD SCALES. IN MAKING MEASUREMENTS ON REDUCED PLANS, THE ABOVE SCALES MAY BE USED.

J.U.L.I.E.
 JOINT UTILITY LOCATION INFORMATION FOR EXCAVATION
 1-800-892-0123
 OR 811

PROJECT ENGINEER: JASON STULTS
PROJECT MANAGER: RUSTIN KEYS
DESIGNER: JOE HOWELL
PHONE: (217) 465-4181
CONTRACT NO. 70894

- S.N. 020-8033**
F.A.P. 760 (IL 48)
LOCATION #1
- S.N. 020-8034**
F.A.P. 760 (IL 48)
LOCATION #2
- S.N. 057-8003**
F.A.P. 71 (IL 54)
LOCATION #3
- S.N. 057-8194**
F.A.P. 730 (US 51 BUSINESS)
LOCATION #4

C-95-062-10

(SEE SHEET 2 FOR LOCATION MAPS)

GROSS LENGTH = 40.00 FT. = 0.008 MILE
 NET LENGTH = 40.00 FT. = 0.008 MILE

STATE OF ILLINOIS
 DEPARTMENT OF TRANSPORTATION
 DIVISION OF HIGHWAYS

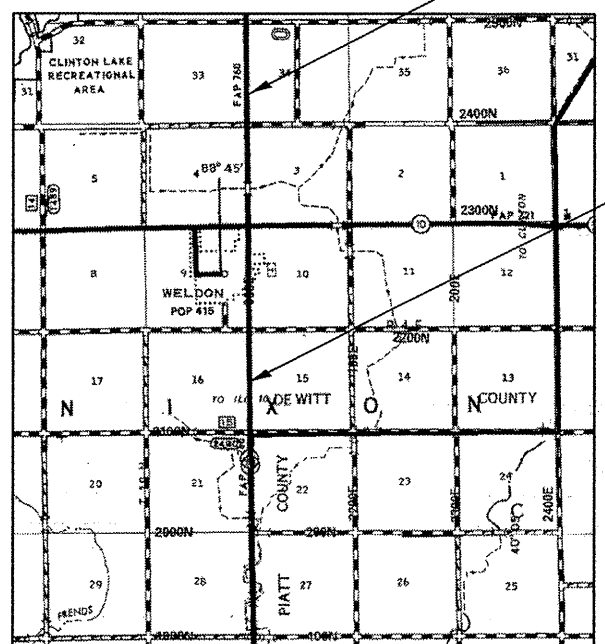
SUBMITTED 2/4 20 11
Jason K. Cousins
 DEPUTY DIRECTOR OF HIGHWAYS, REGION ENGINEER

March 25 20 11
Scott E. Stitt P.E. Jr.
 acting ENGINEER OF DESIGN AND ENVIRONMENT

March 25 20 11
Christine M. Reed
 DIRECTOR OF HIGHWAYS, CHIEF ENGINEER

PRINTED BY THE AUTHORITY
OF THE STATE OF ILLINOIS

LOCATION
#1 & #2
FAP 760 (IL 48)
DEWITT COUNTY



S.N. 020-8033
LOCATION #1
STA. 122 + 60

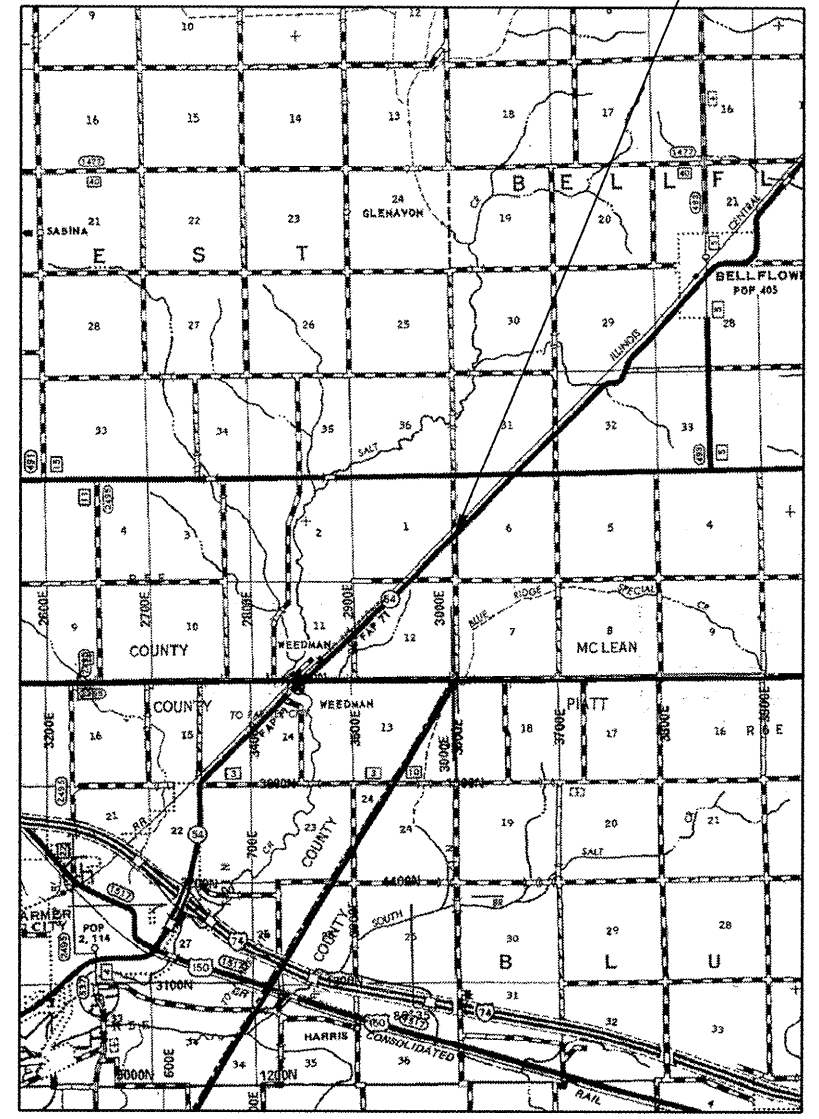
S.N. 020-8034
LOCATION #2
STA. 1163 + 24

R 4 E, 3RD P.M.
0 1 MI. 2 MI.

LOCATION #1
PROJECT BEGINS STA. 122 + 55.50
PROJECT ENDS STA. 122 + 64.50

LOCATION #2
PROJECT BEGINS STA. 1163 + 18.50
PROJECT ENDS STA. 1163 + 29.50

LOCATION
#3
FAP 71 (IL 54)
MCLEAN COUNTY

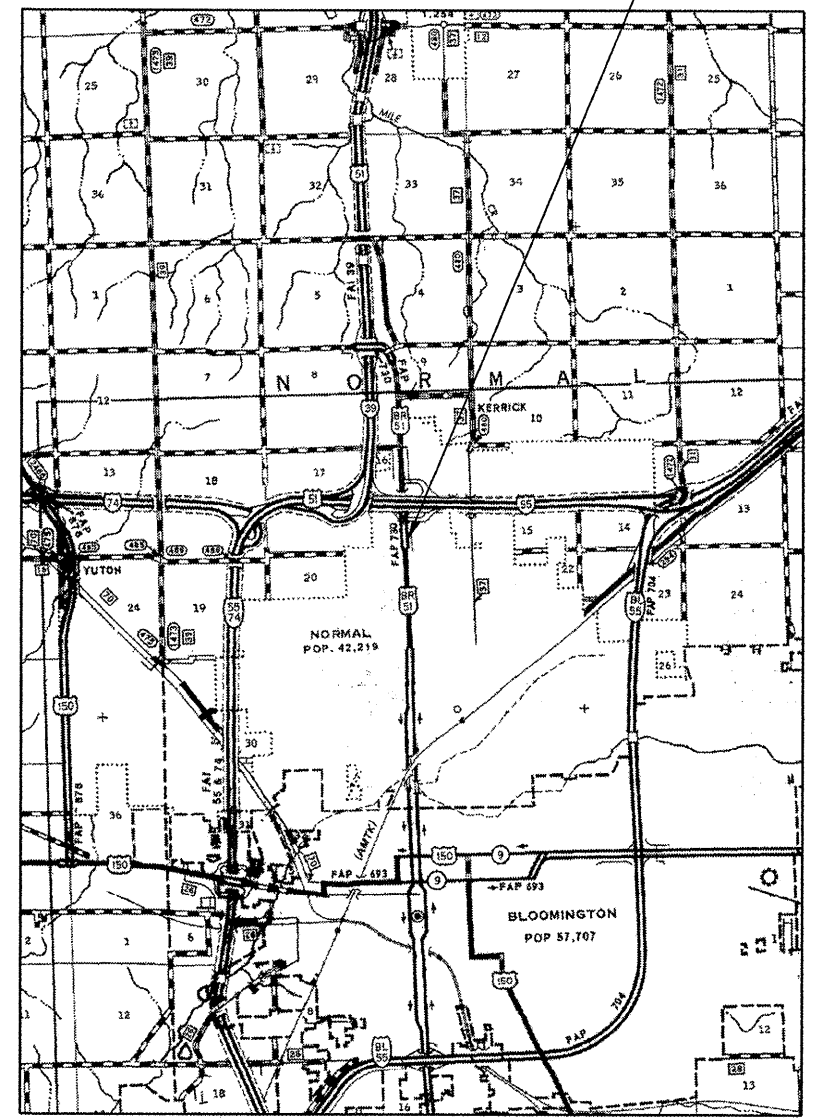


S.N. 057-8003
LOCATION #3
STA. 255 + 45

R 5 E | R 6 E, 3RD P.M.
0 1 MI. 2 MI.

LOCATION #3
PROJECT BEGINS STA. 255 + 39.50
PROJECT ENDS STA. 255 + 50.50

LOCATION
#4
FAP 730 (US 51 BUSINESS)
MCLEAN COUNTY



S.N. 057-8194
LOCATION #4
STA. 32 + 60

R 2 E, 3RD P.M.
0 1 MI. 2 MI.

LOCATION #4
PROJECT BEGINS STA. 32 + 55.50
PROJECT ENDS STA. 32 + 64.50

• ROUTES VARIOUS
•• POSTING MITIGATION FY2011-1
••• DEWITT / MCLEAN

FILE NAME =	USER NAME = keyrnb	DESIGNED -	REVISED -
c:\pw\work\pwidot\keyrnb\d8248670\0570894-sht-cover.dgn		DRAWN -	REVISED -
PLOT SCALE = 40,0000' / IN.		CHECKED -	REVISED -
PLOT DATE = 2/3/2011		DATE -	REVISED -

STATE OF ILLINOIS
DEPARTMENT OF TRANSPORTATION

LOCATION MAPS			
SCALE:	SHEET NO.	OF SHEETS	STA. TO STA.

F.A. RTE.	SECTION	COUNTY	TOTAL SHEETS	SHEET NO.
.	..	***	23	2
CONTRACT NO. 70894				
ILLINOIS FED. AID PROJECT				

INDEX OF SHEETS

SHEET NO.	DESCRIPTION
1	COVER SHEET
2	LOCATION MAPS
3	INDEX OF SHEETS, LIST OF HIGHWAY STANDARDS, GENERAL NOTES
4	SUMMARY OF QUANTITIES
5 - 6	TYPICAL SECTIONS
7 - 9	PLAN SHEETS
10 - 11	S.N. 020 - 8033 SLAB DETAILS
12 - 13	S.N. 020 - 8034 SLAB DETAILS
14 - 15	S.N. 057 - 8003 SLAB DETAILS
16 - 17	S.N. 057 - 8194 SLAB DETAILS
18	TRAFFIC CONTROL & PROTECTION DEVICES (ROAD & SIDEROAD / STREET CLOSURES)
19 - 22	PAVEMENT MARKING AND MARKERS (RURAL & URBAN APPLICATIONS) DETAIL
23	PAVEMENT MARKING (INTERSTATE AND MULTILANE APPLICATIONS) DETAIL

GENERAL NOTES

G.N.-100
ENGLISH UNITS OF MEASUREMENT SHALL GOVERN OVER AND SUPERSEDE ANY METRIC UNITS SHOWN IN THIS CONTRACT. WHERE INCLUDED, METRIC UNITS ARE FOR INFORMATION ONLY.

G.N.-609
PRIOR TO ROUTING TRAFFIC ONTO THE SHOULDERS AS SHOWN IN THE STAGING PLANS, THE CONTRACTOR SHALL SECURE THE GRATINGS ON SHOULDER INLETS AS DIRECTED BY THE ENGINEER. THIS WORK WILL BE PAID FOR ACCORDING TO ARTICLE 109.04.

LOCATION 4
AT LOCATION 4 THE CONTRACTOR SHALL PRESERVE AND PROTECT THE NATIVE AND DECORATIVE PLANTINGS IN THE MEDIAN AS WELL AS THE DRAINAGE STRUCTURES IN THE ADJACENT CURB AND GUTTER. THE CONTRACTOR SHALL REFRAIN FROM WORKING IN THE MEDIAN IF POSSIBLE. ANY DAMAGES TO THE PLANTINGS IN THE MEDIAN, OR TO THE DRAINAGE STRUCTURES IN THE CURBS, SHALL BE REPLACED IN KIND AT THE CONTRACTOR'S EXPENSE.

NO COMMITMENTS

LIST OF HIGHWAY STANDARDS

STANDARD NO.	DESCRIPTION
000001-06	STANDARD SYMBOLS, ABBREVIATIONS AND PATTERNS
001001-02	AREAS OF REINFORCEMENT BARS
001006	DECIMAL OF AN INCH AND A FOOT
701311-03	LANE CLOSURE, 2L, 2W, MOVING OPERATIONS - DAY ONLY
701316-05	LANE CLOSURE, 2L, 2W, BRIDGE REPAIR, FOR SPEEDS ≥ 45 MPH
701427	LANE CLOSURE, MULTILANE, INTERMITTANT OR MOVING OPER., FOR SPEEDS ≤ 40 MPH
701601-07	URBAN LANE CLOSURE, MULTILANE, 1W OR 2W WITH NONTRAVERSABLE MEDIAN
701901-01	TRAFFIC CONTROL DEVICES
780001-02	TYPICAL PAVEMENT MARKINGS

- ROUTES VARIOUS
- ** POSTING MITIGATION FY2011-1
- *** DEWITT / MCLEAN

FILE NAME =	USER NAME = keysrb	DESIGNED -	REVISED -	STATE OF ILLINOIS DEPARTMENT OF TRANSPORTATION	INDEX OF SHEETS / GENERAL NOTES LIST OF HIGHWAY STANDARDS	F.A. RTE.	SECTION	COUNTY	TOTAL SHEETS	SHEET NO.
c:\pwwork\p\p\dot\keysrb\d0248870\05708	4-sh1-cover.dgn	DRAWN -	REVISED -			•	••	•••	23	3
PLOT SCALE = 48,0000' / IN.	CHECKED -	REVISED -	CONTRACT NO. 70894							
PLOT DATE = 2/3/2011	DATE -	REVISED -	[ILLINOIS] FED. AID PROJECT							
					SCALE:	SHEET NO. OF SHEETS		STA. TO STA.		

SUMMARY OF QUANTITIES

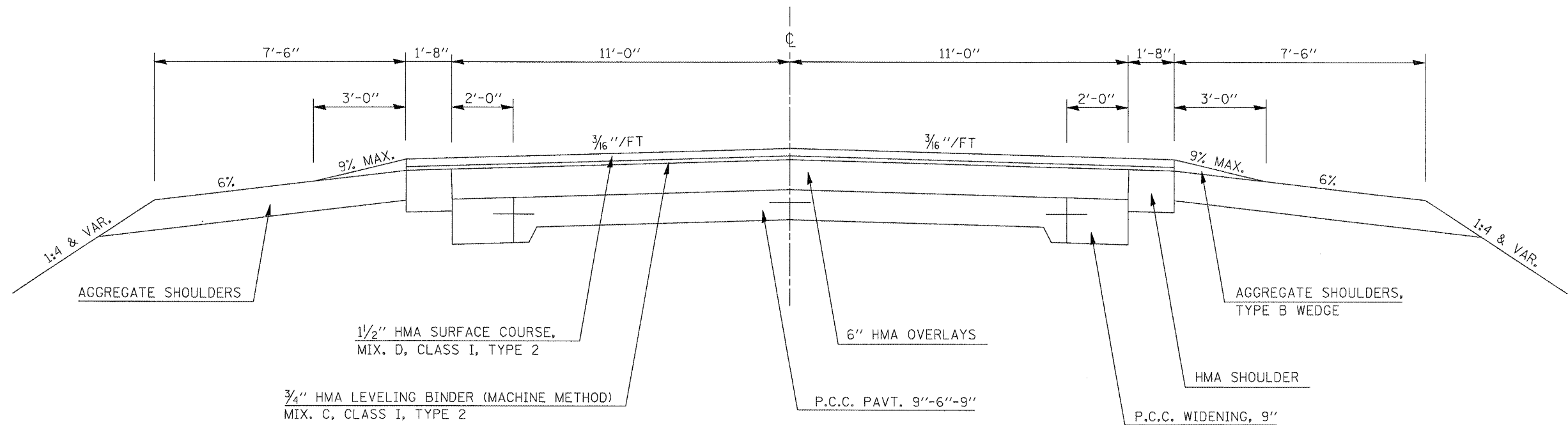
CODE NO.	DESCRIPTION	UNIT	LOCATION OF WORK:				
			TOTAL QUANTITY	DEWITT CO. QUANTITY	DEWITT CO. QUANTITY	MC LEAN CO. QUANTITY	MC LEAN CO. QUANTITY
44000177	HOT MIX ASPHALT SURFACE REMOVAL, 7"	SQ YD	25.3	25.3			
44000186	HOT MIX ASPHALT SURFACE REMOVAL, 9"	SQ YD	43.2			43.2	
50300255	CONCRETE SUPERSTRUCTURE	CU YD	32.2	4.9	7.1	10.8	9.4
50800205	REINFORCEMENT BARS, EPOXY COATED	POUND	10,670.0	1,270.0	2,080.0	4,900.0	2,420.0
50800515	BAR SPLICERS	EACH	122.0	15.0	32.0	45.0	30.0
67100100	MOBILIZATION	L SUM	1.0	0.2	0.2	0.2	0.4
70100100	TRAFFIC CONTROL AND PROTECTION, STANDARD 701316	EACH	3.0	1.0	1.0	1.0	
70102630	TRAFFIC CONTROL AND PROTECTION, STANDARD 701601	L SUM	1.0				1.0
70103815	TRAFFIC CONTROL SURVEILLANCE	CAL DA	28.0	7.0	7.0	7.0	7.0
70106500	TEMPORARY BRIDGE TRAFFIC SIGNALS	EACH	3.0	1.0	1.0	1.0	
78001110	PAINT PAVEMENT MARKING - LINE 4"	FOOT	200.0	50.0	50.0	50.0	50.0
X4422000	PARTIAL DEPTH REMOVAL (VARIABLE DEPTH)	SQ YD	79.8		31.8		48.0

• ROUTES VARIOUS
 ** POSTING MITIGATION FY2011-1
 *** DEWITT / MCLEAN

FILE NAME =	USER NAME = keysrb	DESIGNED -	REVISED -	STATE OF ILLINOIS DEPARTMENT OF TRANSPORTATION	SUMMARY OF QUANTITIES	F.A. RTE.	SECTION	COUNTY	TOTAL SHEETS	SHEET NO.
ca:\pw\work\pwidat\keysrb\d0248870\05788914-sht-over.dgn		DRAWN -	REVISED -			*	**	***	23	4
	PLOT SCALE = 40.0000 / IN.	CHECKED -	REVISED -		SCALE:	SHEET NO. OF SHEETS		STA.	TO STA.	
	PLOT DATE = 2/4/2011	DATE -	REVISED -		CONTRACT NO. 70894					
ILLINOIS FED. AID PROJECT										

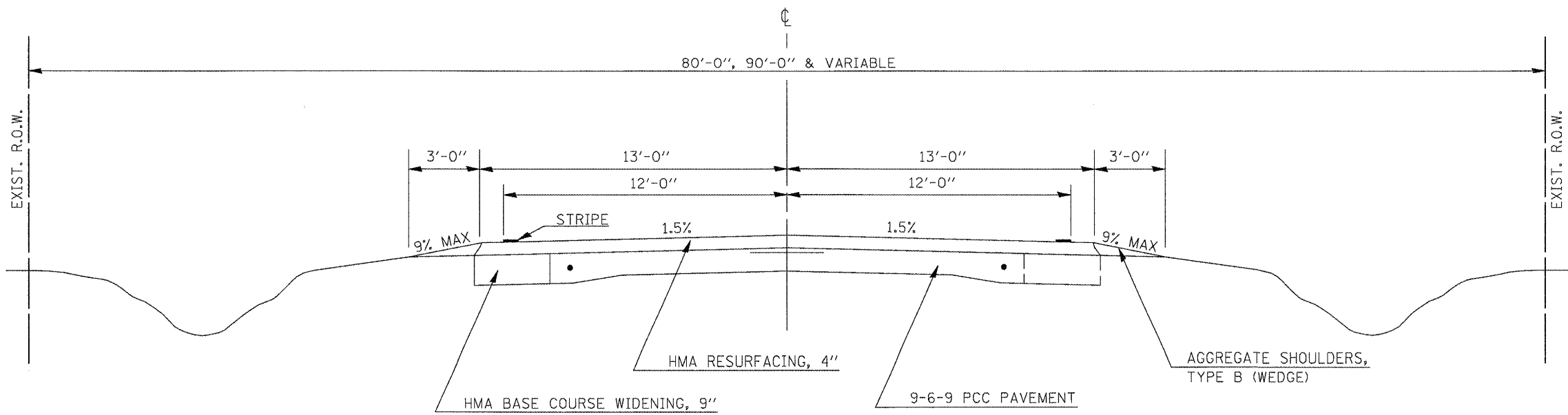
EXISTING TYPICAL SECTION

LOCATION #1 (S. N. 020-8033)
 STA. 122+55.50 TO STA. 122+64.50



EXISTING TYPICAL SECTION

LOCATION #2 (S. N. 020-8034)
 STA. 1163+18.50 TO STA. 1163+29.50



• ROUTES VARIOUS
 •• POSTING MITIGATION FY2011-1
 ••• DEWITT / MCLEAN

FILE NAME =	USER NAME = kayarb	DESIGNED -	REVISED -
ca:\p\work\p\dot\kayarb\0248870\0570834-ah-typical.dgn		DRAWN -	REVISED -
PLOT SCALE = 40.0000' / IN.		CHECKED -	REVISED -
PLOT DATE = 2/3/2011		DATE -	REVISED -

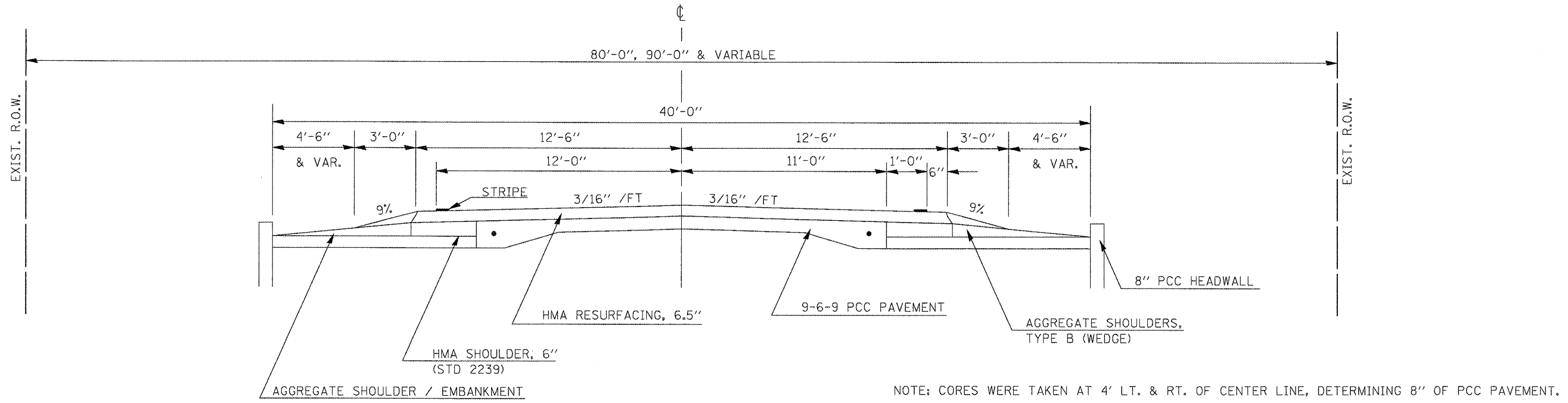
**STATE OF ILLINOIS
 DEPARTMENT OF TRANSPORTATION**

TYPICAL SECTIONS			
SCALE:	SHEET NO.	OF SHEETS	STA. TO STA.

F.A. RTE.	SECTION	COUNTY	TOTAL SHEETS	SHEET NO.
•	••	•••	23	5
CONTRACT NO. 70894				
ILLINOIS FED. AID PROJECT				

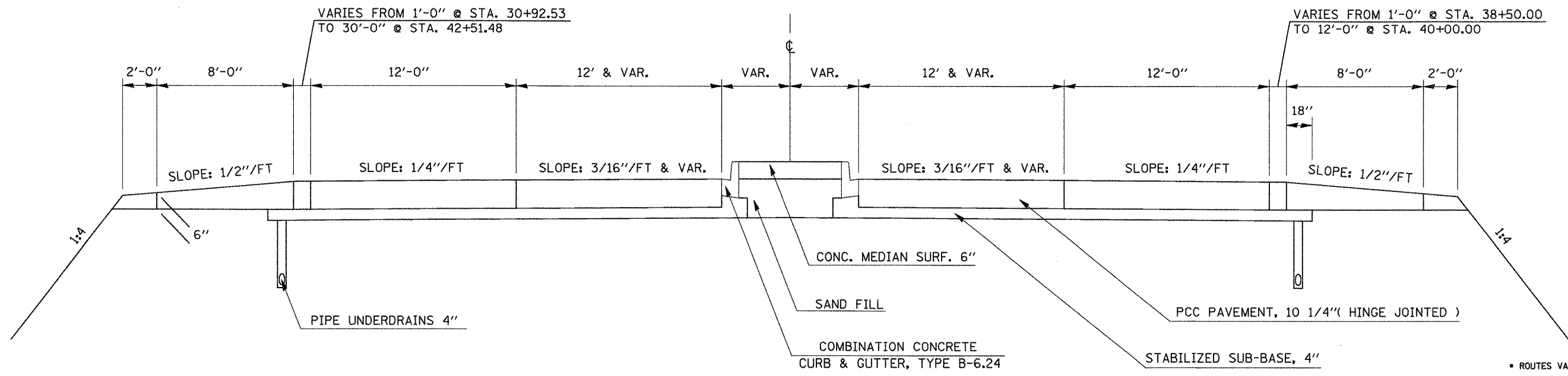
EXISTING TYPICAL SECTION

LOCATION #3 (S. N. 057-8003)
 STA. 255+39.50 TO STA. 255+50.50



EXISTING TYPICAL SECTION

LOCATION #4 (S. N. 057-8194)
 STA. 32+55.50 TO STA. 32+64.50



• ROUTES VARIOUS
 •• POSTING MITIGATION FY2011-1
 ••• DEWITT / MCLEAN

FILE NAME =	USER NAME = keyar-b	DESIGNED -	REVISED -
ct:\pw_work\pwsdot\keyar-b\0248870\0578003\4-shr-Typical.dgn		DRAWN -	REVISED -
PLOT SCALE = 48.0000 "/ IN.		CHECKED -	REVISED -
PLOT DATE = 2/3/2011		DATE -	REVISED -

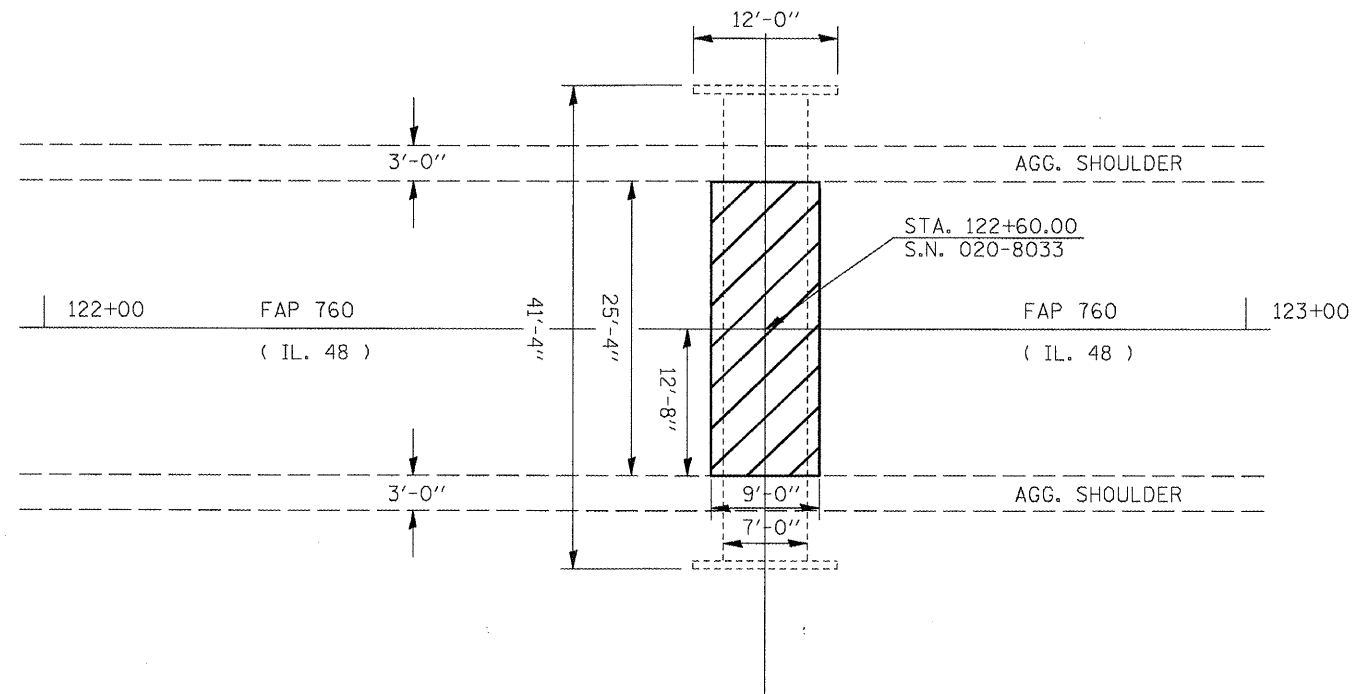
**STATE OF ILLINOIS
 DEPARTMENT OF TRANSPORTATION**

TYPICAL SECTIONS			
SCALE:	SHEET NO.	OF SHEETS	STA. TO STA.

F.A. RTE.	SECTION	COUNTY	TOTAL SHEETS	SHEET NO.
•	••	•••	23	6
CONTRACT NO. 70894				
ILLINOIS FED. AID PROJECT				

LOCATION #1

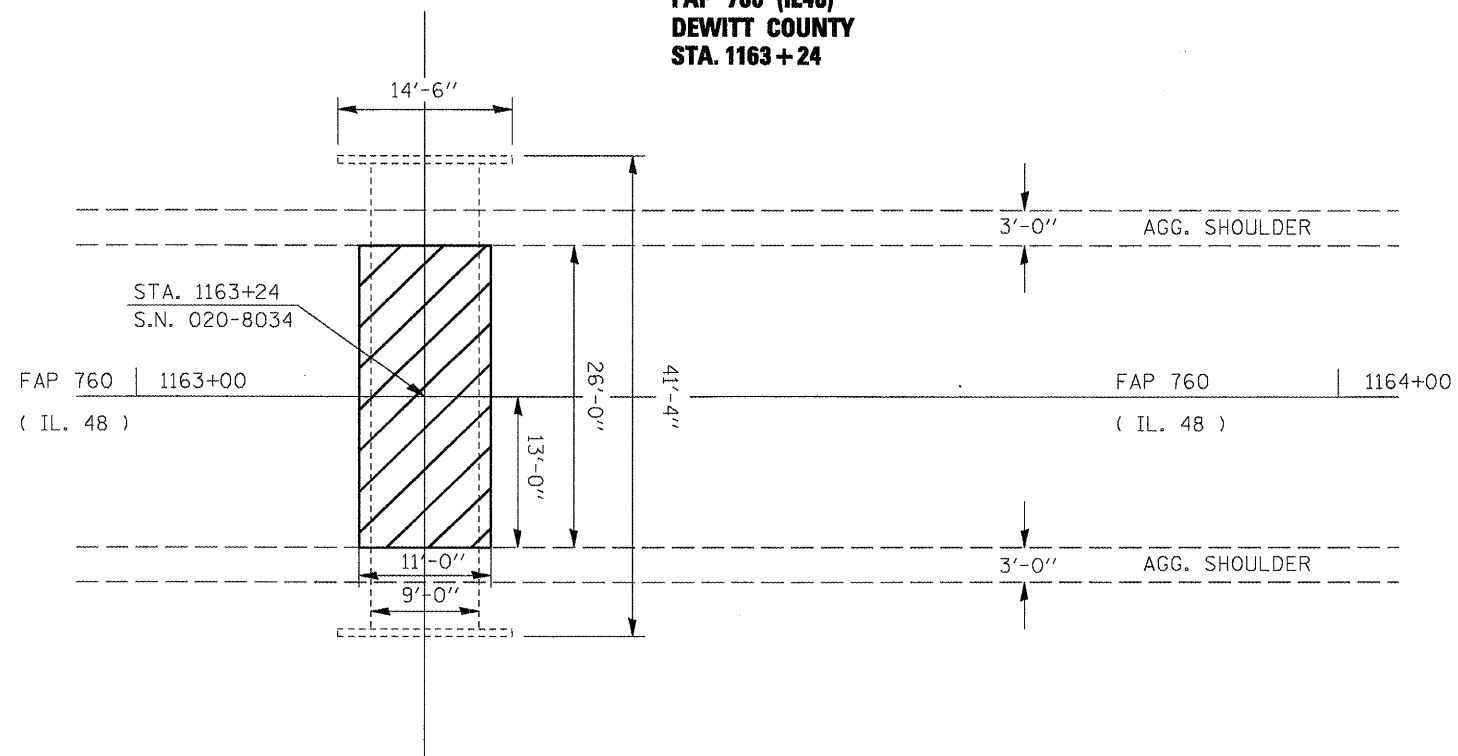
S.N. 020-8033
 FAP 760 (IL48)
 DEWITT COUNTY
 STA. 122+60



AREA OF IMPROVEMENT
 (SEE SLAB DETAILS)

LOCATION #2

S.N. 020-8034
 FAP 760 (IL48)
 DEWITT COUNTY
 STA. 1163+24



AREA OF IMPROVEMENT
 (SEE SLAB DETAILS)

- ROUTES VARIOUS
- POSTING MITIGATION FY2011-1
- DEWITT / MCLEAN

FILE NAME =	USER NAME = keyar-b	DESIGNED -	REVISED -
ca\pwork\pwork\keyar-b\0248678\0578874-shr-Plan.dgn		DRAWN -	REVISED -
	PLOT SCALE = 40.0000' / IN.	CHECKED -	REVISED -
	PLOT DATE = 2/3/2011	DATE -	REVISED -

STATE OF ILLINOIS
 DEPARTMENT OF TRANSPORTATION

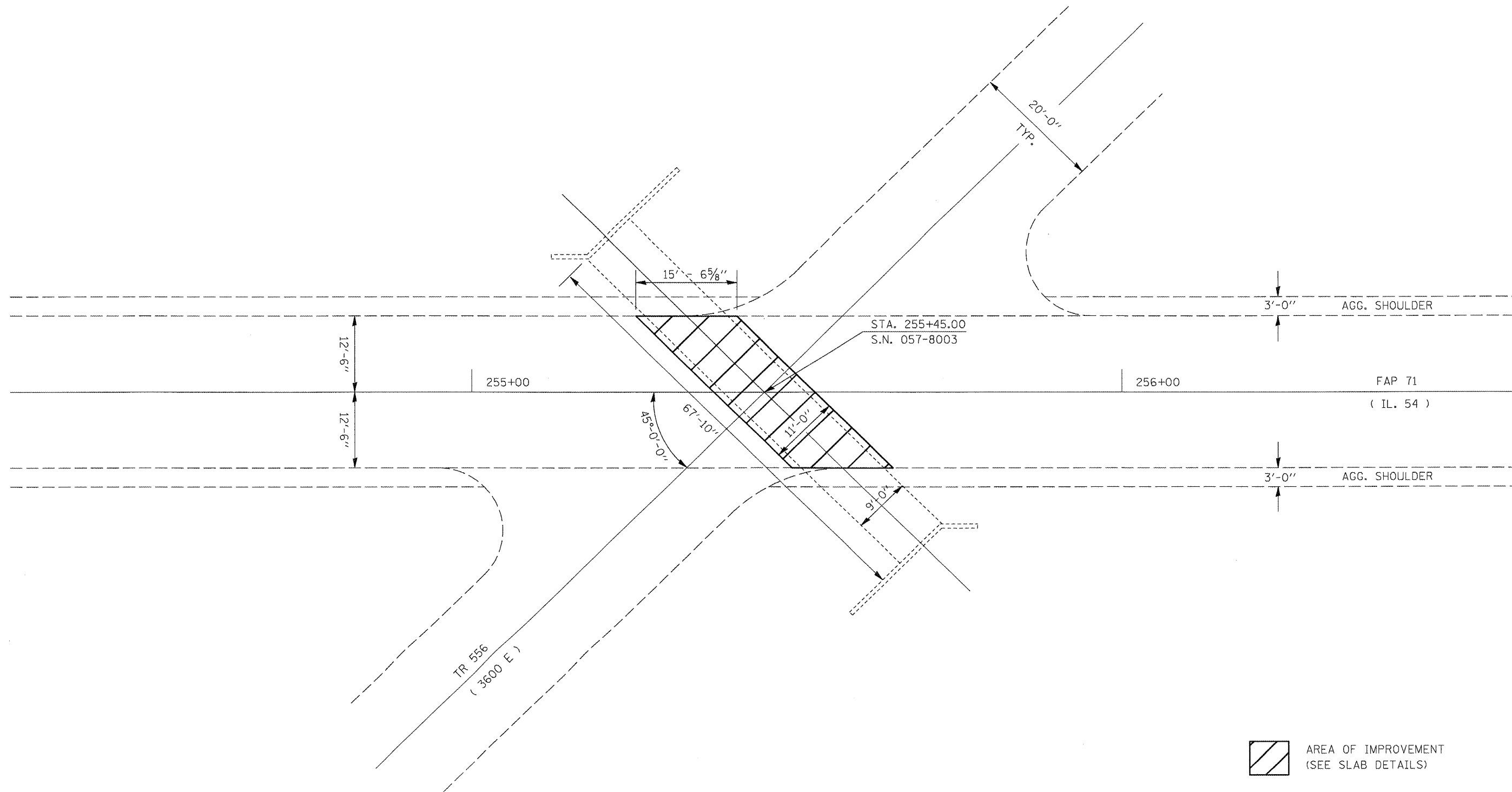
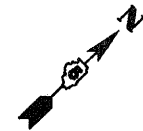
PLAN SHEET - LOCATION #1 & #2

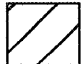
SCALE: SHEET NO. OF SHEETS STA. TO STA.

F.A. RTE.	SECTION	COUNTY	TOTAL SHEETS	SHEET NO.
•	••	•••	23	7
CONTRACT NO. 70894			ILLINOIS FED. AID PROJECT	

LOCATION #3

S.N. 057-8003
 FAP 71 (IL 54)
 MCLEAN COUNTY
 STA. 255+45



 AREA OF IMPROVEMENT
 (SEE SLAB DETAILS)

- ROUTES VARIOUS
- POSTING MITIGATION FY2011-1
- DEWITT / MCLEAN

FILE NAME =	USER NAME = kayarb	DESIGNED -	REVISED -
ct:\pw\work\pwsdot\kayarb\d248870\DS70894-sht-Plan.dgn		DRAWN -	REVISED -
PLOT SCALE = 40.0000' / IN.		CHECKED -	REVISED -
PLOT DATE = 2/3/2011		DATE -	REVISED -

**STATE OF ILLINOIS
 DEPARTMENT OF TRANSPORTATION**

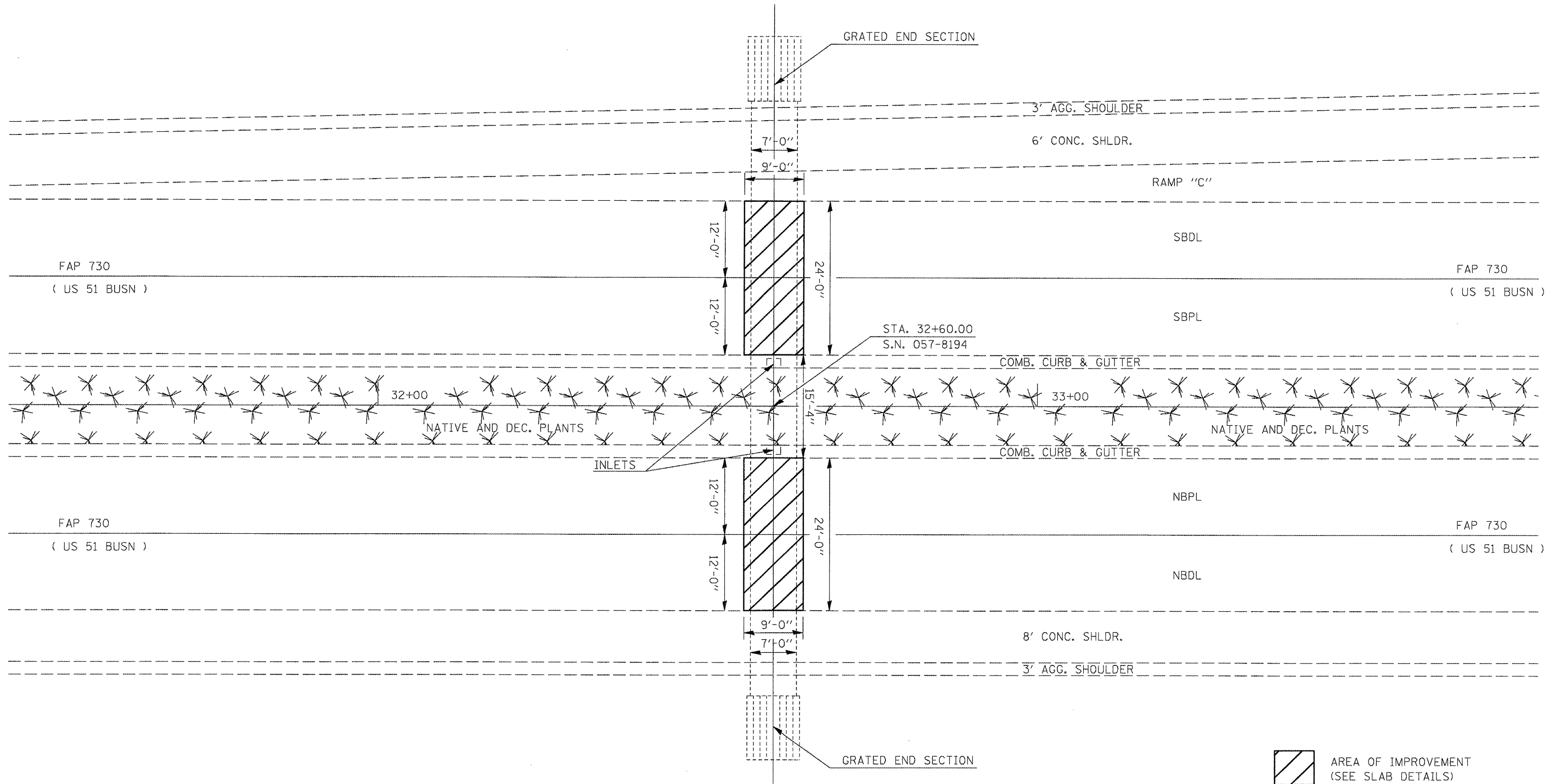
PLAN SHEET - LOCATION #3

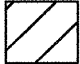
SCALE:	SHEET NO.	OF	SHEETS	STA.	TO STA.
--------	-----------	----	--------	------	---------

F.A. RTE.	SECTION	COUNTY	TOTAL SHEETS	SHEET NO.
•	••	•••	23	8
CONTRACT NO. 70894				
ILLINOIS FED. AID PROJECT				

LOCATION #4

S.N. 057-8194
 FAP 730 (US 51 BUSINESS)
 MCLEAN COUNTY
 STA. 32+60



 AREA OF IMPROVEMENT
 (SEE SLAB DETAILS)

• ROUTES VARIOUS
 •• POSTING MITIGATION FY2011-1
 ••• DEWITT / MCLEAN

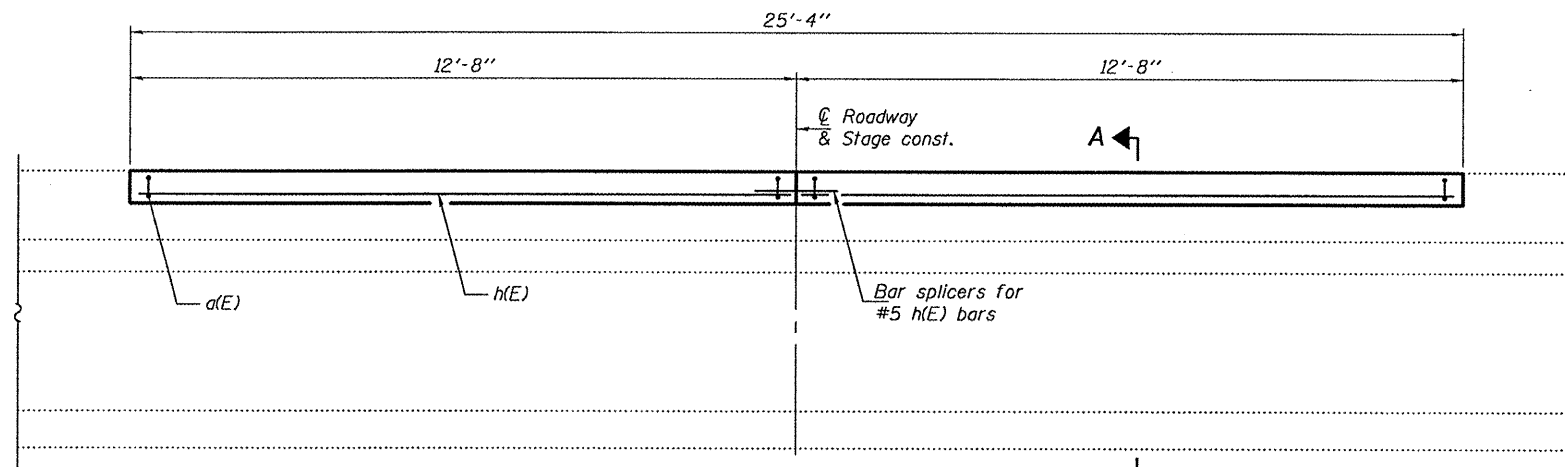
FILE NAME =	USER NAME = keyarb	DESIGNED -	REVISED -
es:\pw\work\pwwid\keyarb\d0248670\0578194-sht-Plan.dgn		DRAWN -	REVISED -
PLOT SCALE = 40.0000 // IN.		CHECKED -	REVISED -
PLOT DATE = 2/3/2011		DATE -	REVISED -

STATE OF ILLINOIS
 DEPARTMENT OF TRANSPORTATION

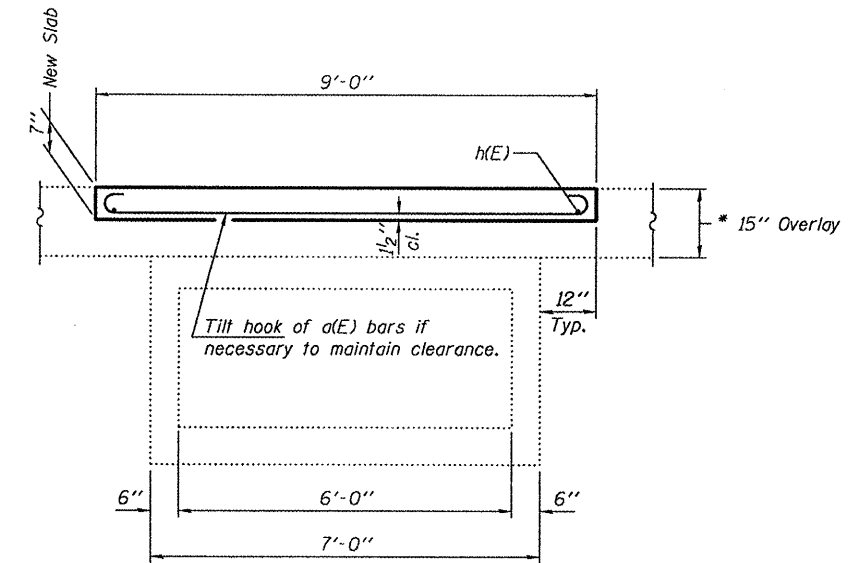
PLAN SHEET - LOCATION #4

SCALE: SHEET NO. OF SHEETS STA. TO STA.

F.A. RTE.	SECTION	COUNTY	TOTAL SHEETS	SHEET NO.
•	••	•••	23	9
CONTRACT NO. 70894				
ILLINOIS FED. AID PROJECT				

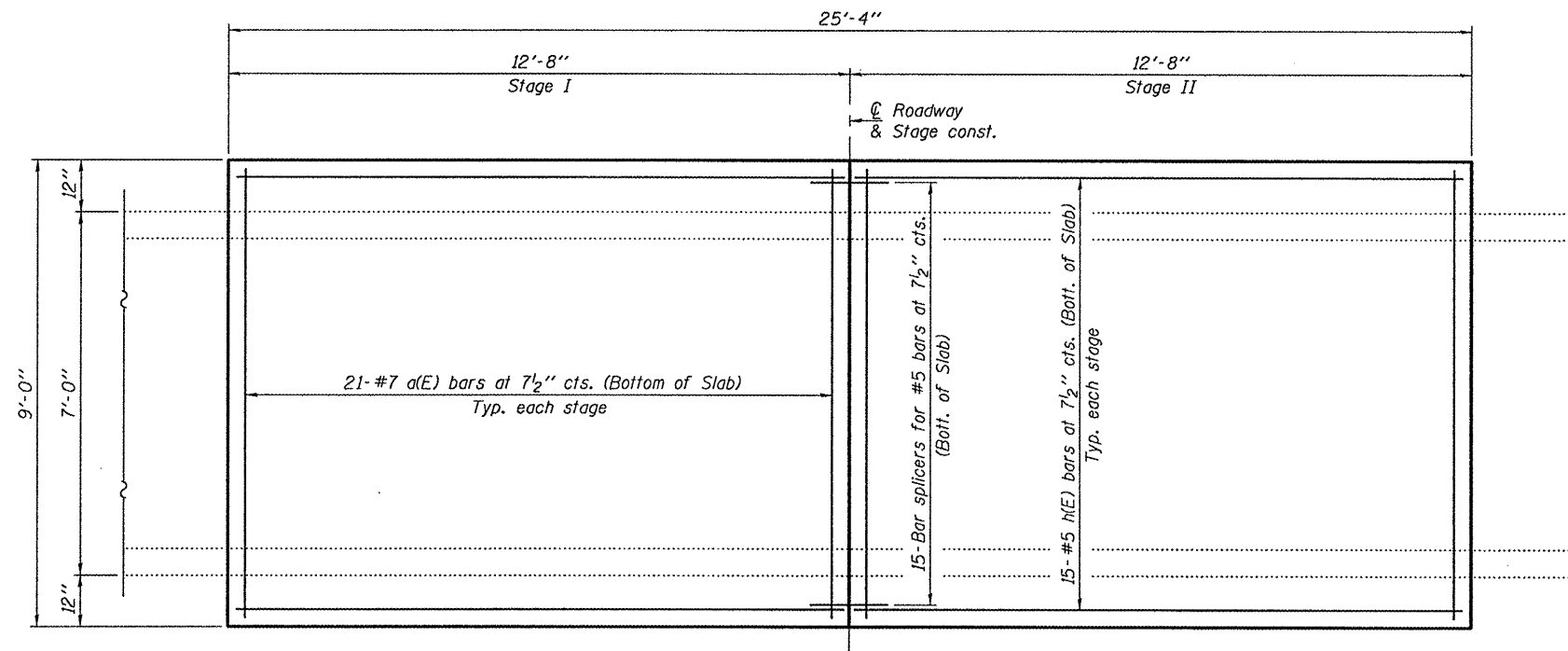


LONGITUDINAL SECTION



SECTION A-A

* Remove 7" of existing overlay and replace with 7" concrete slab as shown. Slope to match roadway. Cost of removal included with Hot-Mix Asphalt Surface Removal, 7".



PLAN

GENERAL NOTES

Plan dimensions and details relative to existing plans are subject to nominal construction variations. The Contractor shall field verify existing dimensions and details affecting new construction and make necessary approved adjustments prior to construction or ordering of materials. Such variations shall not be cause for additional compensation for a change in scope of the work, however, the Contractor will be paid for the quantity actually furnished at the unit price bid for the work.

Reinforcement bars shall conform to the requirements of ASTM A 706 Gr 60. See Special Provisions.

Reinforcement bars designated (E) shall be epoxy coated.

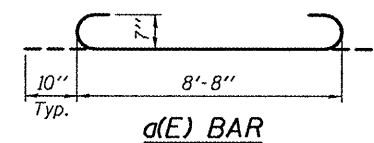
The slab surface shall have its final finish tined according to Article 420.09(e)(1) of the Standard Specifications. Cost included with Concrete Superstructure.

DESIGN STRESSES

FIELD UNITS
 $f'_c = 3,500$ psi
 $f_y = 60,000$ psi (Reinf.)

BILL OF MATERIAL

Bar	No.	Size	Length	Shape
a(E)	42	#7	10'-4"	U
h(E)	30	#5	12'-4"	—
Bar Splicers	Each		15	
Hot-Mix Asphalt Surface Removal, 7"	Sq. Yds.		25.3	
Reinforcement Bars, Epoxy Coated	Pound		1270	
Concrete Superstructure	Cu. Yds.		4.9	



EXPIRES 11-30-2012

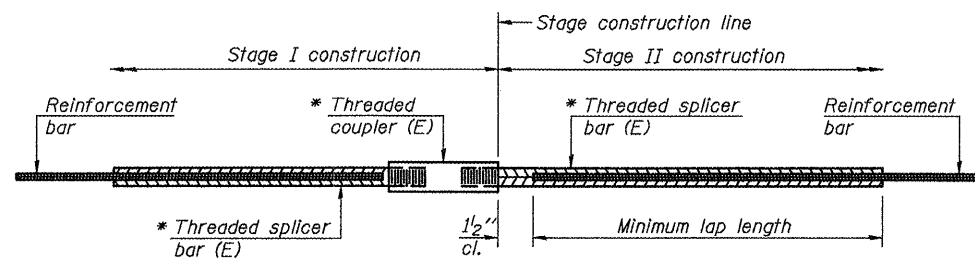
DESIGNED <i>David Carl Puzey</i>	EXAMINED <i>John F. [Signature]</i>	DATE MARCH 14, 2011
CHECKED <i>Victor H. [Signature]</i>	PASSED <i>David Carl Puzey</i>	
DRAWN <i>baliva</i>		
CHECKED <i>[Signature]</i>		

STATE OF ILLINOIS
DEPARTMENT OF TRANSPORTATION

SLAB DETAILS
LOCATION 1
SN 020-8033

SHEET NO. 1 OF 2 SHEETS

F.A.P. RTE.	SECTION	COUNTY	TOTAL SHEETS	SHEET NO.
760	POSTING MITIGATION FY2011-1	DEWITT	23	10
CONTRACT NO. 70894			ILLINOIS FED. AID PROJECT	



STANDARD BAR SPLICER ASSEMBLY

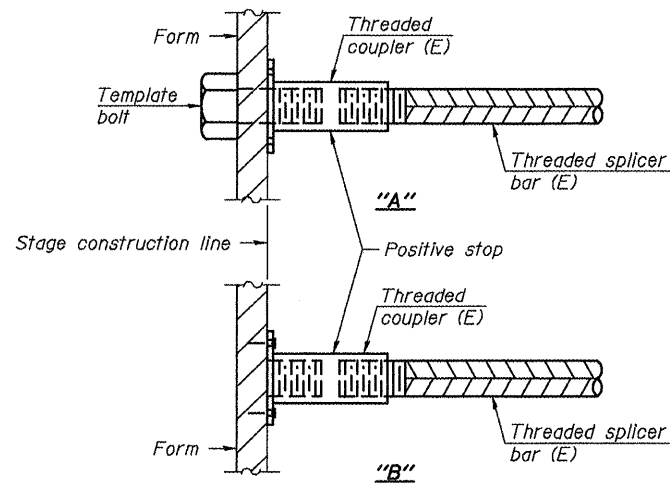
Minimum Lap Lengths					
Bar size to be spliced	Table 1	Table 2	Table 3	Table 4	Table 5
3, 4	1'-5"	1'-11"	2'-1"	2'-4"	2'-3"
5	1'-9"	2'-5"	2'-7"	2'-11"	2'-10"
6	2'-1"	2'-11"	3'-1"	3'-6"	3'-4"
7	2'-9"	3'-10"	4'-2"	4'-8"	4'-6"
8	3'-8"	5'-1"	5'-5"	6'-2"	5'-10"
9	4'-7"	6'-5"	6'-10"	7'-9"	7'-5"

- Table 1: Black bar, 0.8 Class C
- Table 2: Black bar, Top bar lap, 0.8 Class C
- Table 3: Epoxy bar, 0.8 Class C
- Table 4: Epoxy bar, Top bar lap, 0.8 Class C
- Table 5: Epoxy bar, Top bar lap, Class B

Threaded splicer bar length = min. lap length + 1 1/2" + thread length

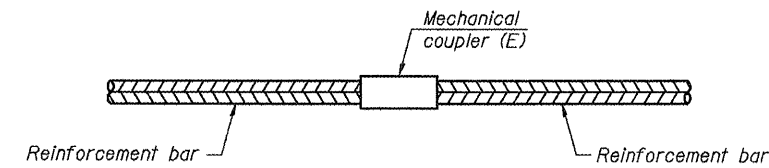
* Epoxy not required on Bar Splicer Assembly components used in conjunction with black bars.

Location	Bar size	No. assemblies required	Table for minimum lap length
Bottom of slab	#5	15	3



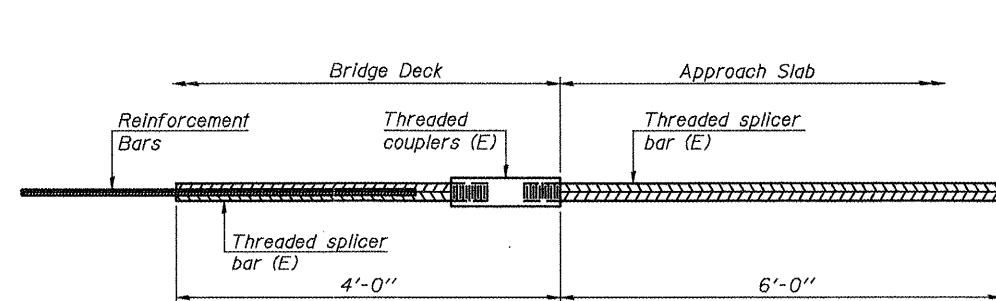
INSTALLATION AND SETTING METHODS

"A": Set bar splicer assembly by means of a template bolt.
 "B": Set bar splicer assembly by nailing to wood forms or cementing to steel forms.
 (E) : Indicates epoxy coating.



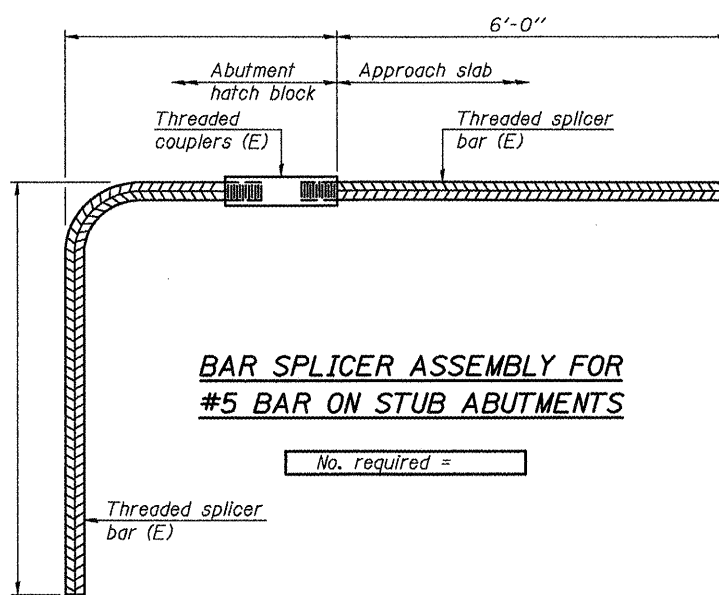
STANDARD MECHANICAL SPLICER

Location	Bar size	No. assemblies required



BAR SPLICER ASSEMBLY FOR #5 BAR ON INTEGRAL OR SEMI-INTEGRAL ABUTMENTS

No. required =



BAR SPLICER ASSEMBLY FOR #5 BAR ON STUB ABUTMENTS

No. required =

NOTES

Splicer bars shall be deformed with threaded ends and have a minimum 60 ksi yield strength.
 All reinforcement shall be lapped and tied to the splicer bars.
 Bar splicer assemblies shall be epoxy coated according to the requirements for reinforcement bars. See Section 508 of the Standard Specifications.
 See special provision for Mechanical Splicers.
 See approved list of bar splicer assemblies and mechanical splicers for alternatives.

BSD-1 7-1-10

DESIGNED DAB
 CHECKED VHV
 DRAWN baliva
 CHECKED DAB VHV

EXAMINED *Jaime F. J...*
 ACTING ENGINEER OF STRUCTURAL SERVICES
 PASSED *Carl...*
 ACTING ENGINEER OF BRIDGES AND STRUCTURES

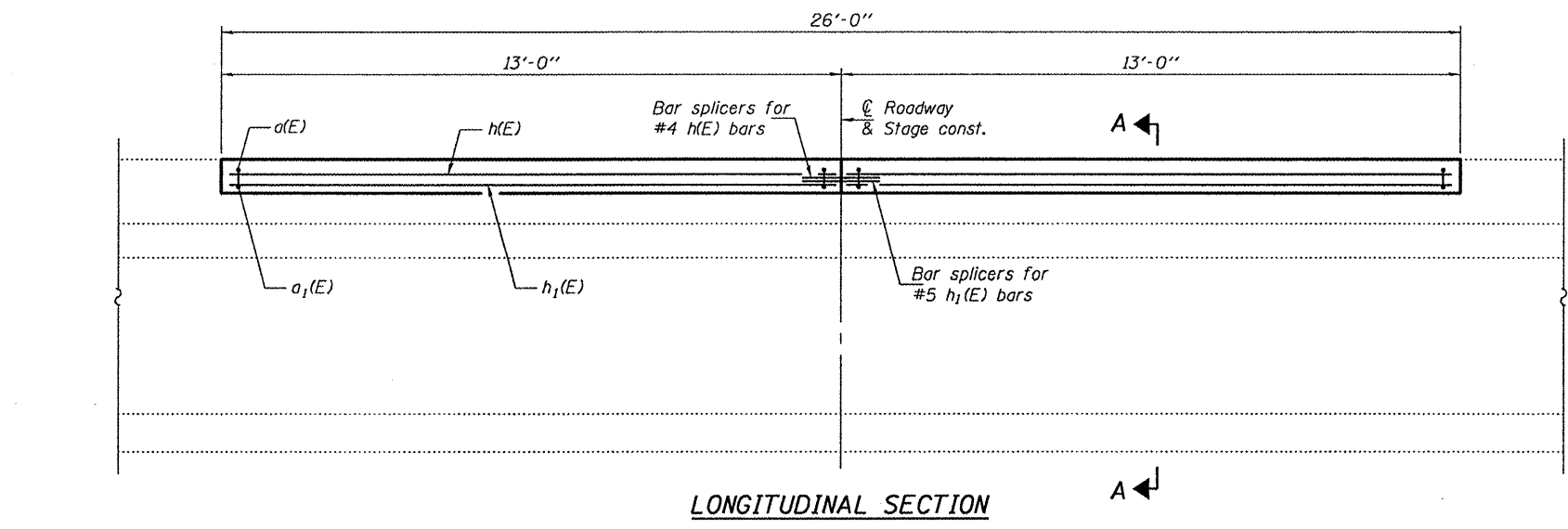
DATE - MARCH 14, 2011

STATE OF ILLINOIS
 DEPARTMENT OF TRANSPORTATION

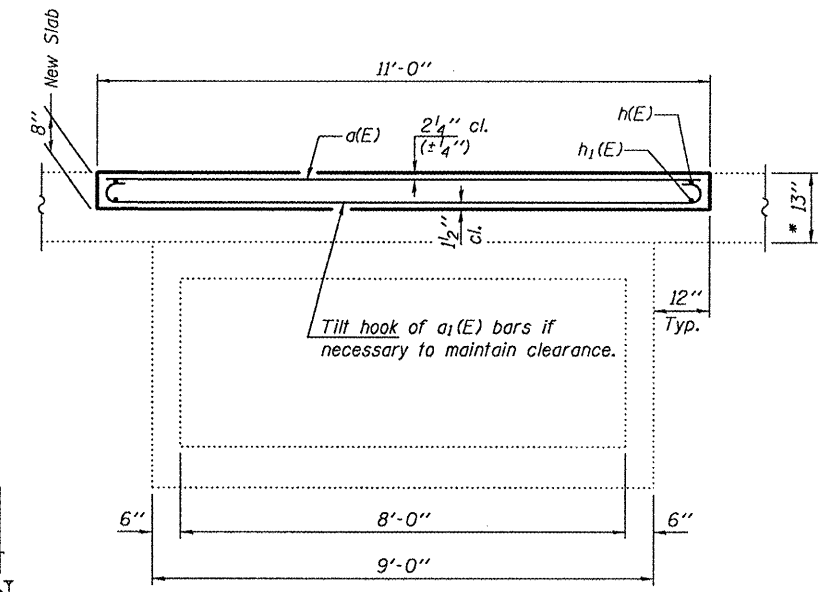
BAR SPLICER ASSEMBLY AND MECHANICAL SPLICER DETAILS
 LOCATION 1
 SN 020-8033

F.A.P. RTE.	SECTION	COUNTY	TOTAL SHEETS	SHEET NO.
760	POSTING MITIGATION FY2011-1	DEWITT	23	11
CONTRACT NO. 70894			ILLINOIS FED. AID PROJECT	

SHEET NO. 2 OF 2 SHEETS

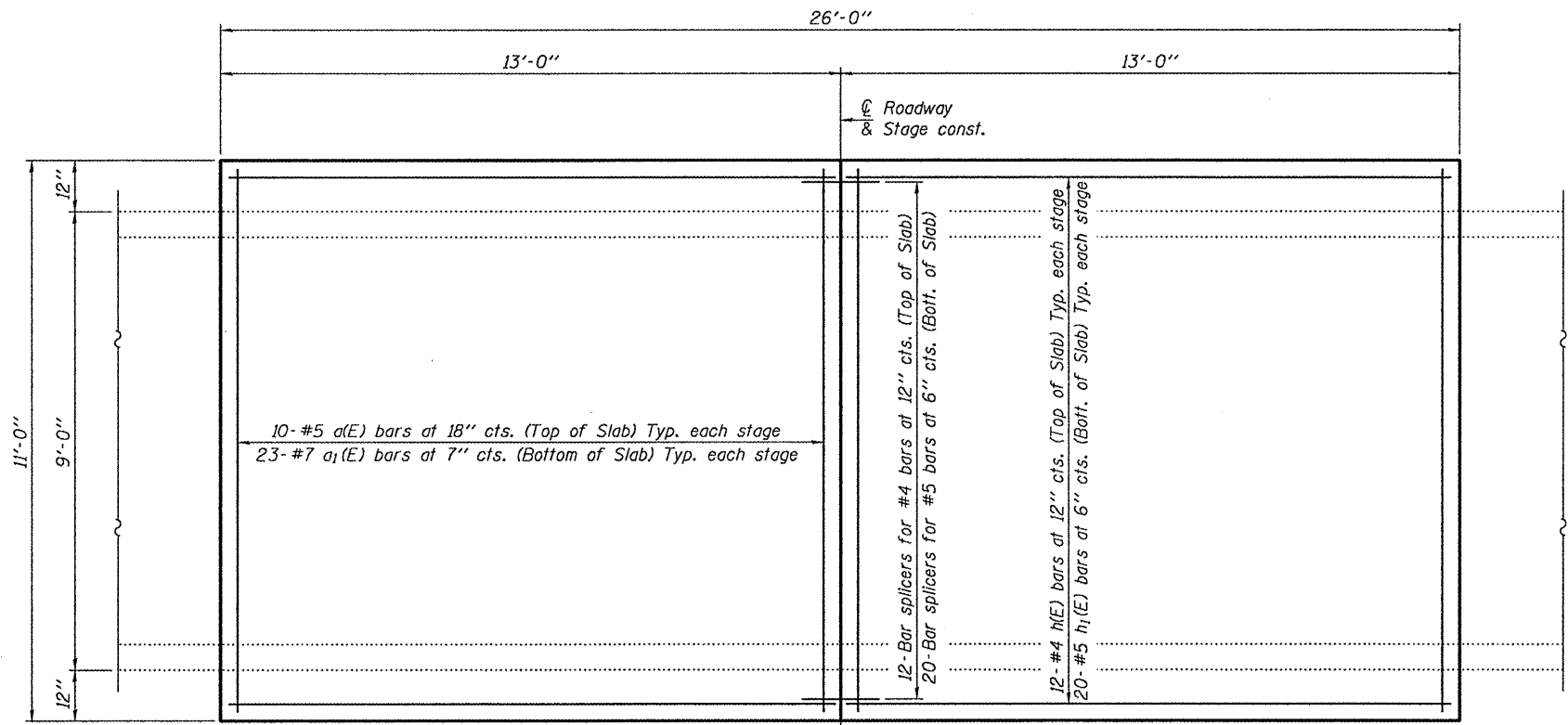


LONGITUDINAL SECTION



SECTION A-A

* Remove 4" of existing HMA overlay and 4" of existing PCC pavement and replace with 8" concrete slab as shown. Slope to match roadway. Cost of removal included with Partial Depth Removal (Variable Depth).



PLAN

GENERAL NOTES

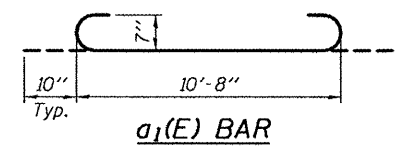
Plan dimensions and details relative to existing plans are subject to nominal construction variations. The Contractor shall field verify existing dimensions and details affecting new construction and make necessary approved adjustments prior to construction or ordering of materials. Such variations shall not be cause for additional compensation for a change in scope of the work, however, the Contractor will be paid for the quantity actually furnished at the unit price bid for the work.
 Reinforcement bars shall conform to the requirements of ASTM A 706 Gr 60. See Special Provisions.
 Reinforcement bars designated (E) shall be epoxy coated.
 The slab surface shall have its final finish tined according to Article 420.09(e)(1) of the Standard Specifications. Cost included with Concrete Superstructure.

BILL OF MATERIAL

Bar	No.	Size	Length	Shape
a(E)	20	#5	10'-8"	—
a1(E)	46	#7	12'-4"	⌋
h(E)	24	#4	12'-8"	—
h1(E)	40	#5	12'-8"	—
Bar Splicers			Each	32
Partial Depth Removal (Variable Depth)			Sq. Yds.	31.8
Reinforcement Bars, Epoxy Coated			Pound	2080
Concrete Superstructure			Cu. Yds.	7.1

DESIGN STRESSES

FIELD UNITS
 $f'c = 3,500$ psi
 $f_y = 60,000$ psi (Reinf.)



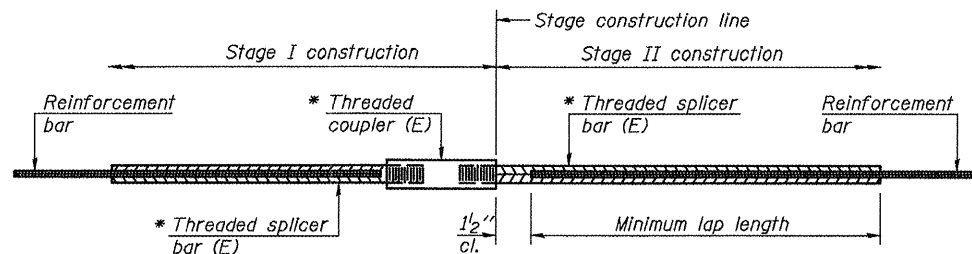
EXPIRES 11-30-2012

DESIGNED: <i>[Signature]</i>	EXAMINED: <i>[Signature]</i>	DATE: MARCH 14, 2011
CHECKED: <i>[Signature]</i>	PASSED: <i>[Signature]</i>	
DRAWN: <i>[Signature]</i>		
CHECKED: <i>[Signature]</i>		

STATE OF ILLINOIS
 DEPARTMENT OF TRANSPORTATION

SLAB DETAILS
 LOCATION 2
 SN 020-8034
 SHEET NO. 1 OF 2 SHEETS

F.A.P. RTE.	SECTION	COUNTY	TOTAL SHEETS	SHEET NO.
760	POSTING MITIGATION FY2011-1	DEWITT	23	12
CONTRACT NO. 70894			ILLINOIS FED. AID PROJECT	



STANDARD BAR SPLICER ASSEMBLY

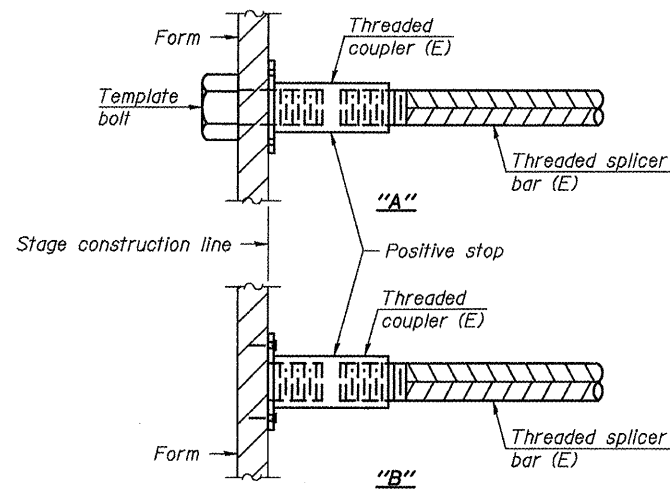
Bar size to be spliced	Minimum Lap Lengths				
	Table 1	Table 2	Table 3	Table 4	Table 5
3, 4	1'-5"	1'-11"	2'-1"	2'-4"	2'-3"
5	1'-9"	2'-5"	2'-7"	2'-11"	2'-10"
6	2'-1"	2'-11"	3'-1"	3'-6"	3'-4"
7	2'-9"	3'-10"	4'-2"	4'-8"	4'-6"
8	3'-8"	5'-1"	5'-5"	6'-2"	5'-10"
9	4'-7"	6'-5"	6'-10"	7'-9"	7'-5"

- Table 1: Black bar, 0.8 Class C
- Table 2: Black bar, Top bar lap, 0.8 Class C
- Table 3: Epoxy bar, 0.8 Class C
- Table 4: Epoxy bar, Top bar lap, 0.8 Class C
- Table 5: Epoxy bar, Top bar lap, Class B

Threaded splicer bar length = min. lap length + 1 1/2" + thread length

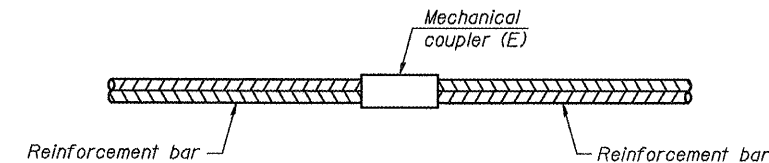
* Epoxy not required on Bar Splicer Assembly components used in conjunction with black bars.

Location	Bar size	No. assemblies required	Table for minimum lap length
Top of slab	#4	12	3
Bottom of slab	#5	20	3



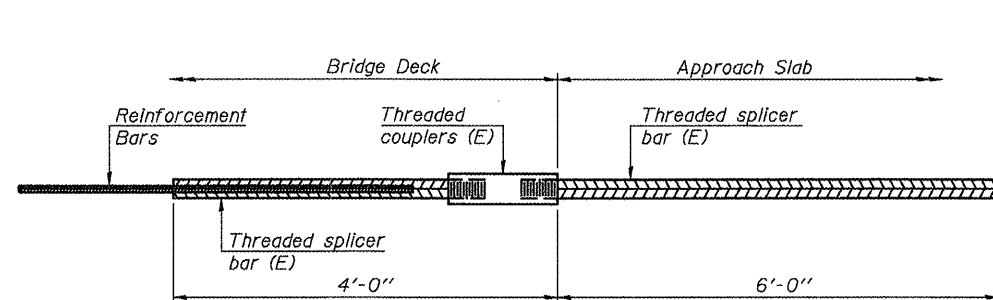
INSTALLATION AND SETTING METHODS

"A": Set bar splicer assembly by means of a template bolt.
 "B": Set bar splicer assembly by nailing to wood forms or cementing to steel forms.
 (E) : Indicates epoxy coating.



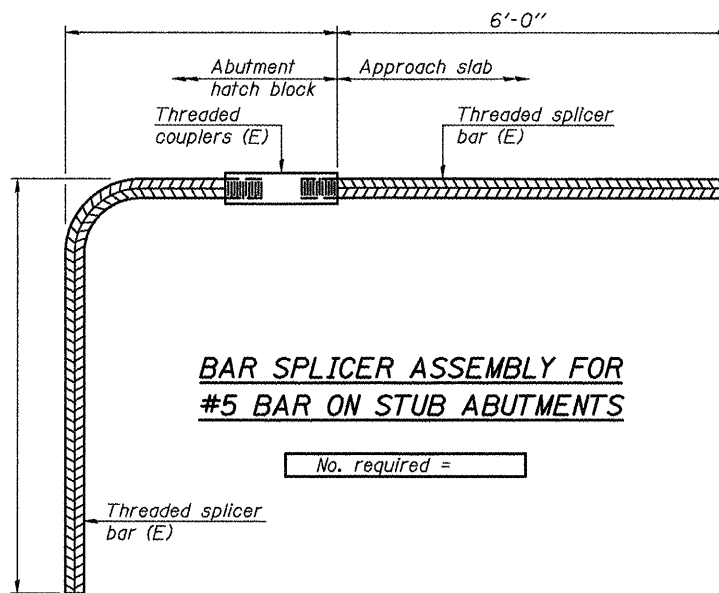
STANDARD MECHANICAL SPLICER

Location	Bar size	No. assemblies required



BAR SPLICER ASSEMBLY FOR #5 BAR ON INTEGRAL OR SEMI-INTEGRAL ABUTMENTS

No. required =



BAR SPLICER ASSEMBLY FOR #5 BAR ON STUB ABUTMENTS

No. required =

NOTES

Splicer bars shall be deformed with threaded ends and have a minimum 60 ksi yield strength.
 All reinforcement shall be lapped and tied to the splicer bars.
 Bar splicer assemblies shall be epoxy coated according to the requirements for reinforcement bars. See Section 508 of the Standard Specifications.
 See special provision for Mechanical Splicers.
 See approved list of bar splicer assemblies and mechanical splicers for alternatives.

BSD-1 7-1-10

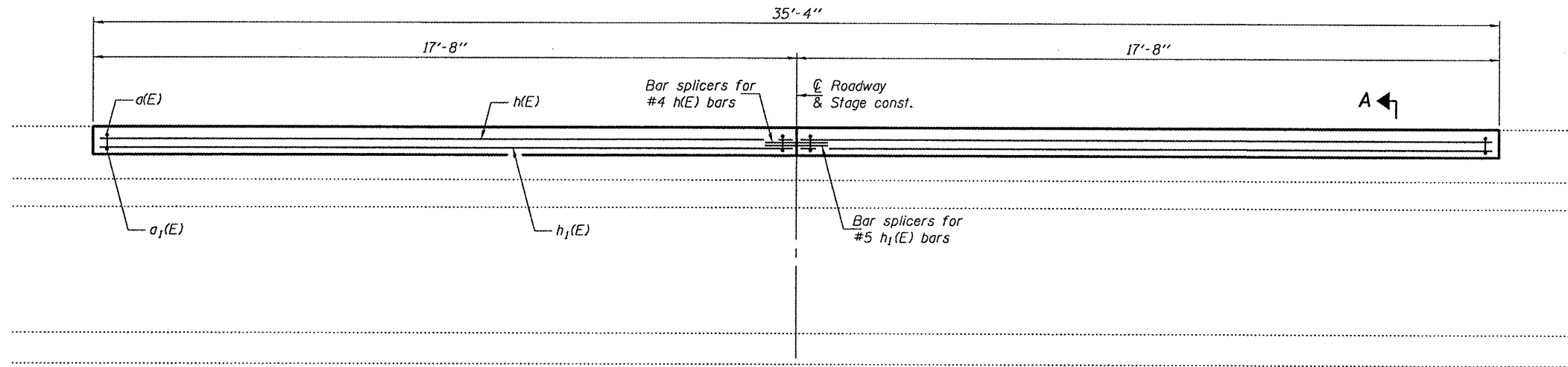
DESIGNED DAB	EXAMINED	DATE - MARCH 14, 2011
CHECKED VHV	 ACTING ENGINEER OF STRUCTURAL SERVICES	
DRAWN ballva	PASSED	 ACTING ENGINEER OF BRIDGES AND STRUCTURES
CHECKED DAB VHV		

STATE OF ILLINOIS
 DEPARTMENT OF TRANSPORTATION

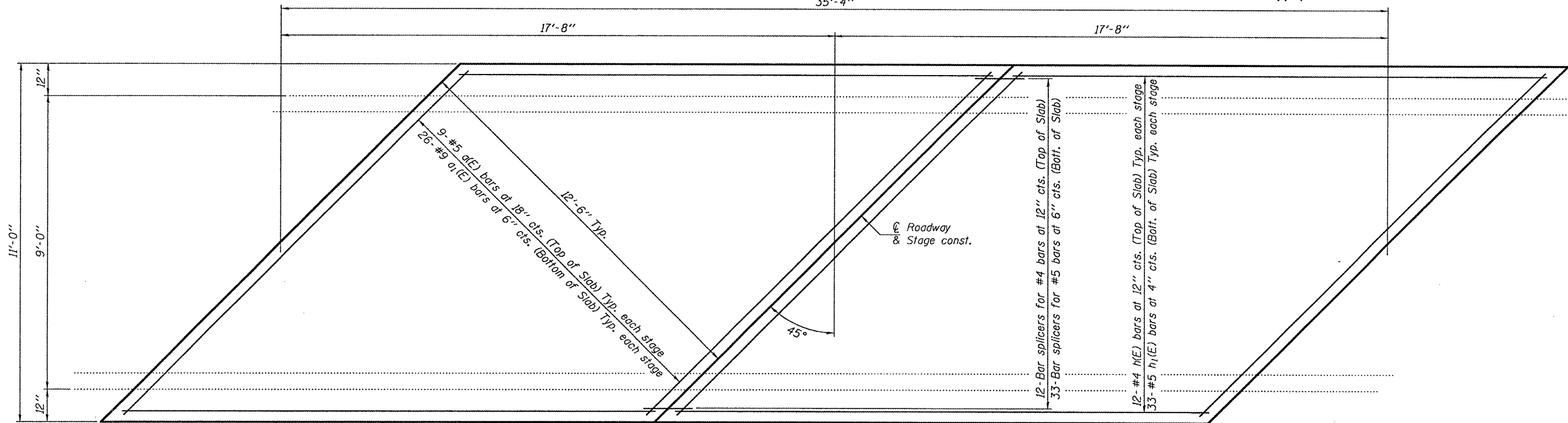
BAR SPLICER ASSEMBLY AND MECHANICAL SPLICER DETAILS
 LOCATION 2
 SN 020-8034

F.A.P. RTE.	SECTION	COUNTY	TOTAL SHEETS	SHEET NO.
760	POSTING MITIGATION FY2011-1	DEWITT	23	13
CONTRACT NO. 70894			ILLINOIS FED. AID PROJECT	

SHEET NO. 2 OF 2 SHEETS



LONGITUDINAL SECTION

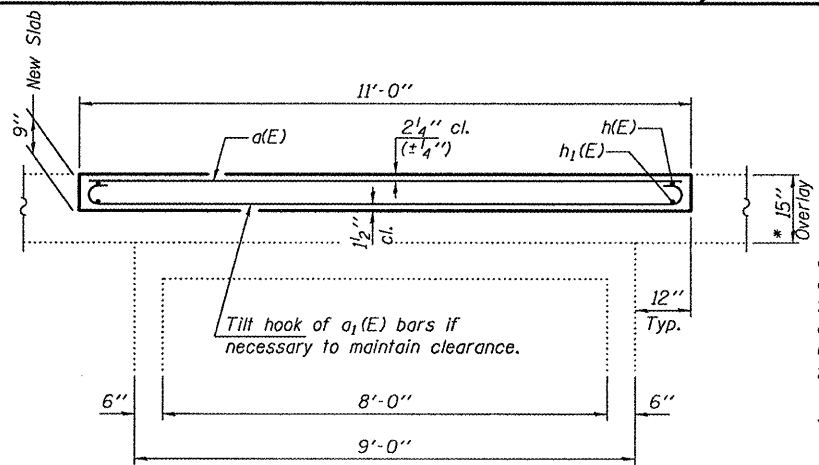


PLAN

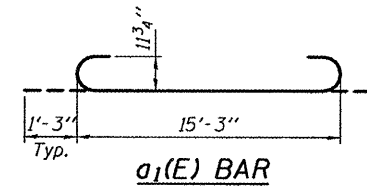
* Remove 9" of existing HMA overlay and replace with 9" concrete slab as shown. Slope to match roadway. Cost of removal included with Hot-Mix Asphalt Surface Removal, 9"

GENERAL NOTES

Plan dimensions and details relative to existing plans are subject to nominal construction variations. The Contractor shall field verify existing dimensions and details affecting new construction and make necessary approved adjustments prior to construction or ordering of materials. Such variations shall not be cause for additional compensation for a change in scope of the work, however, the Contractor will be paid for the quantity actually furnished at the unit price bid for the work.
 Reinforcement bars shall conform to the requirements of ASTM A 706 Gr 60. See Special Provisions.
 Reinforcement bars designated (E) shall be epoxy coated.
 The slab surface shall have its final finish tined according to Article 420.09(e)(1) of the Standard Specifications. Cost included with Concrete Superstructures.



SECTION A-A



DESIGN STRESSES

FIELD UNITS
 $f'_c = 3,500$ psi
 $f_y = 60,000$ psi (Reinf.)

BILL OF MATERIAL

Bar	No.	Size	Length	Shape	
a(E)	18	#5	15'-3"	—	
a1(E)	52	#9	17'-9"	U	
h(E)	24	#4	17'-4"	—	
h1(E)	66	#5	17'-4"	—	
Bar Splicers				Each	45
Hot-Mix Asphalt Surface Removal, 9"				Sq. Yds.	43.2
Reinforcement Bars, Epoxy Coated				Pound	4900
Concrete Superstructure				Cu. Yds.	10.8



EXPIRES 11-30-2012

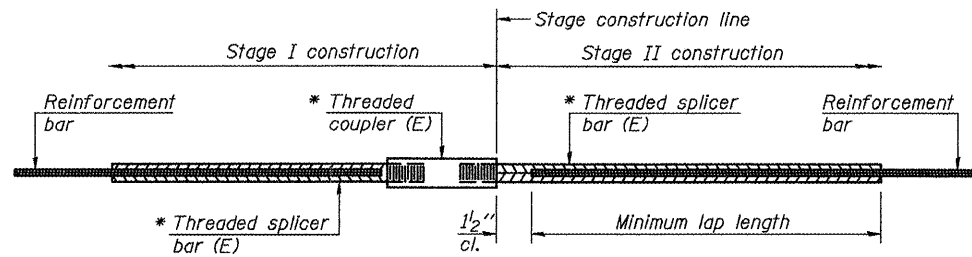
DESIGNED <i>Victor H. Jelic</i>	EXAMINED <i>John F. Kelly</i>	DATE	MARCH 14, 2011
CHECKED <i>Victor H. Jelic</i>	ACTING ENGINEER OF STRUCTURAL SERVICES		
DRAWN <i>baliva</i>	PASSED <i>John Carl Puzey</i>		
CHECKED <i>VH</i>	ACTING ENGINEER OF BRIDGES AND STRUCTURES		

STATE OF ILLINOIS
 DEPARTMENT OF TRANSPORTATION

SLAB DETAILS
 LOCATION 3
 SN 057-8003

SHEET NO. 1 OF 2 SHEETS

F.A.P. RTE.	SECTION	COUNTY	TOTAL SHEETS	SHEET NO.
71	POSTING MITIGATION FY2011-1	MCLEAN	23	14
CONTRACT NO. 70894			ILLINOIS FED. AID PROJECT	



STANDARD BAR SPLICER ASSEMBLY

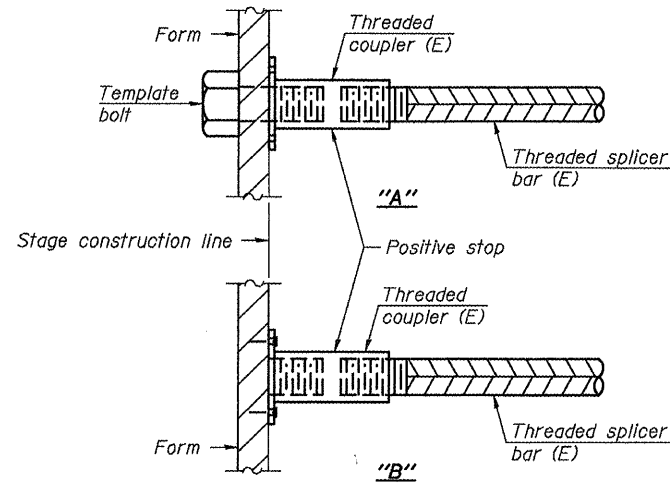
Minimum Lap Lengths					
Bar size to be spliced	Table 1	Table 2	Table 3	Table 4	Table 5
3, 4	1'-5"	1'-11"	2'-1"	2'-4"	2'-3"
5	1'-9"	2'-5"	2'-7"	2'-11"	2'-10"
6	2'-1"	2'-11"	3'-1"	3'-6"	3'-4"
7	2'-9"	3'-10"	4'-2"	4'-8"	4'-6"
8	3'-8"	5'-1"	5'-5"	6'-2"	5'-10"
9	4'-7"	6'-5"	6'-10"	7'-9"	7'-5"

- Table 1: Black bar, 0.8 Class C
- Table 2: Black bar, Top bar lap, 0.8 Class C
- Table 3: Epoxy bar, 0.8 Class C
- Table 4: Epoxy bar, Top bar lap, 0.8 Class C
- Table 5: Epoxy bar, Top bar lap, Class B

Threaded splicer bar length = min. lap length + 1 1/2" + thread length

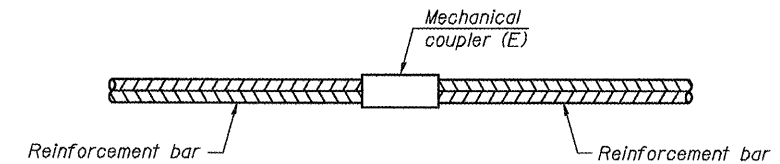
* Epoxy not required on Bar Splicer Assembly components used in conjunction with black bars.

Location	Bar size	No. assemblies required	Table for minimum lap length
Top of slab	#4	12	3
Bottom of slab	#5	33	3



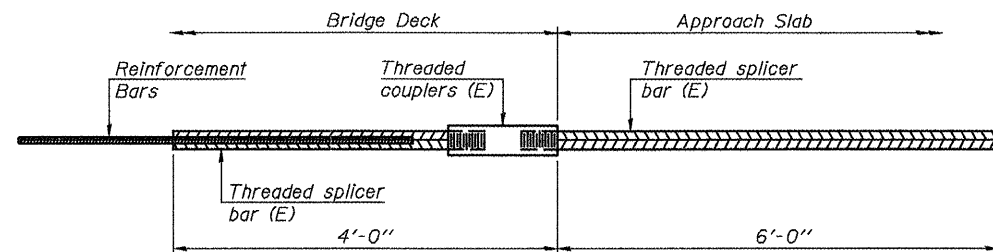
INSTALLATION AND SETTING METHODS

"A": Set bar splicer assembly by means of a template bolt.
 "B": Set bar splicer assembly by nailing to wood forms or cementing to steel forms.
 (E) : Indicates epoxy coating.



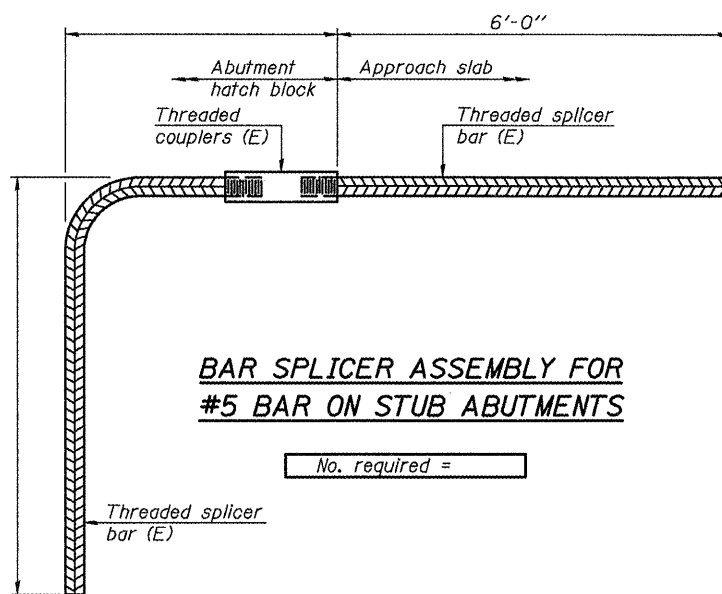
STANDARD MECHANICAL SPLICER

Location	Bar size	No. assemblies required



BAR SPLICER ASSEMBLY FOR #5 BAR ON INTEGRAL OR SEMI-INTEGRAL ABUTMENTS

No. required =



BAR SPLICER ASSEMBLY FOR #5 BAR ON STUB ABUTMENTS

No. required =

NOTES

Splicer bars shall be deformed with threaded ends and have a minimum 60 ksi yield strength.
 All reinforcement shall be lapped and tied to the splicer bars.
 Bar splicer assemblies shall be epoxy coated according to the requirements for reinforcement bars. See Section 508 of the Standard Specifications.
 See special provision for Mechanical Splicers.
 See approved list of bar splicer assemblies and mechanical splicers for alternatives.

BSD-1 7-1-10

DESIGNED DAB
 CHECKED VHV
 DRAWN baliva
 CHECKED DAB VHV

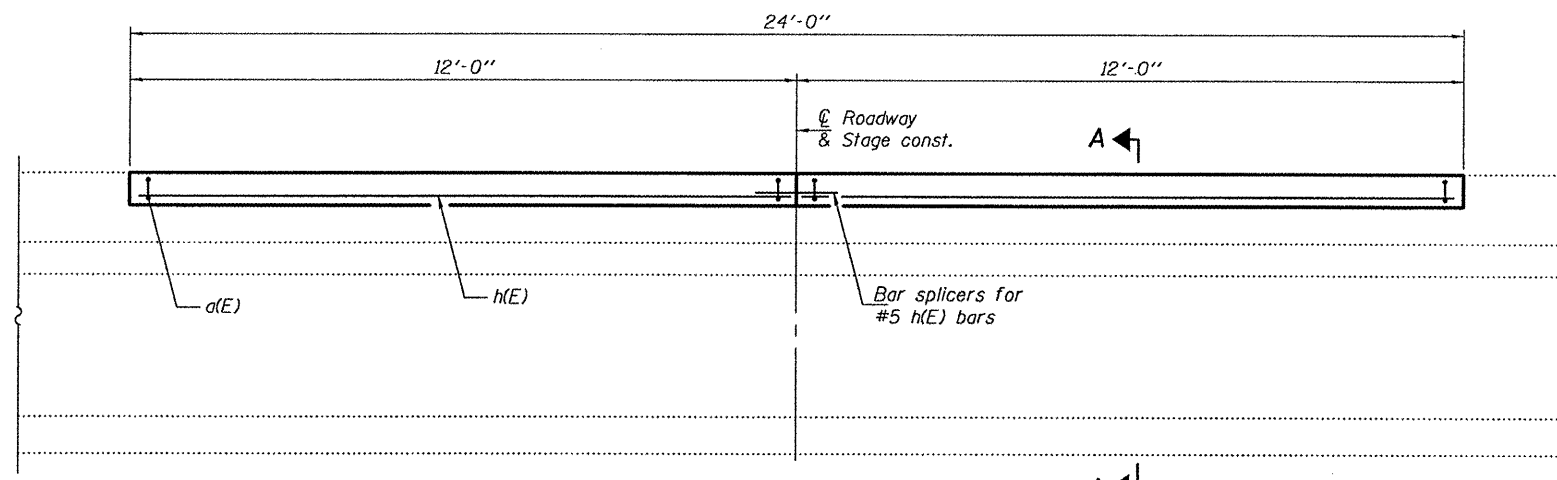
EXAMINED
 PASSED
 ACTING ENGINEER OF STRUCTURAL SERVICES
 ACTING ENGINEER OF BRIDGES AND STRUCTURES

DATE - MARCH 14, 2011

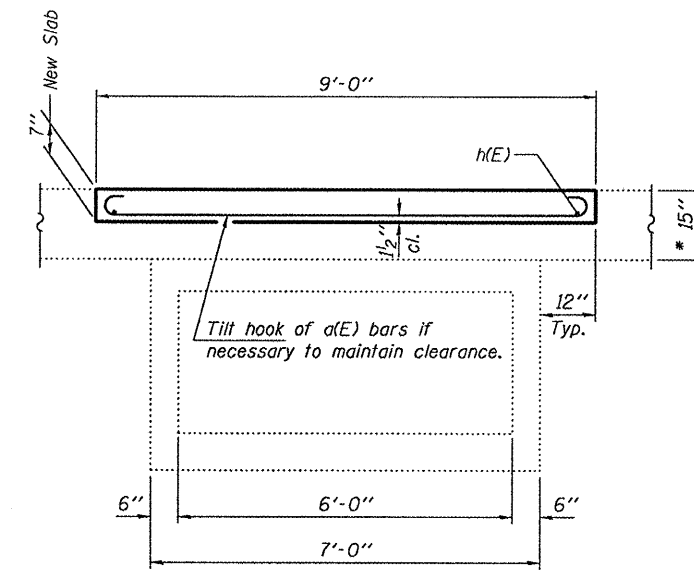
STATE OF ILLINOIS
 DEPARTMENT OF TRANSPORTATION

BAR SPLICER ASSEMBLY AND MECHANICAL SPLICER DETAILS
 LOCATION 3
 SN 057-8003
 SHEET NO. 2 OF 2 SHEETS

F.A.P. RTE.	SECTION	COUNTY	TOTAL SHEETS	SHEET NO.
71	POSTING MITIGATION FY2011-1	MCLEAN	23	15
CONTRACT NO. 70894			ILLINOIS FED. AID PROJECT	

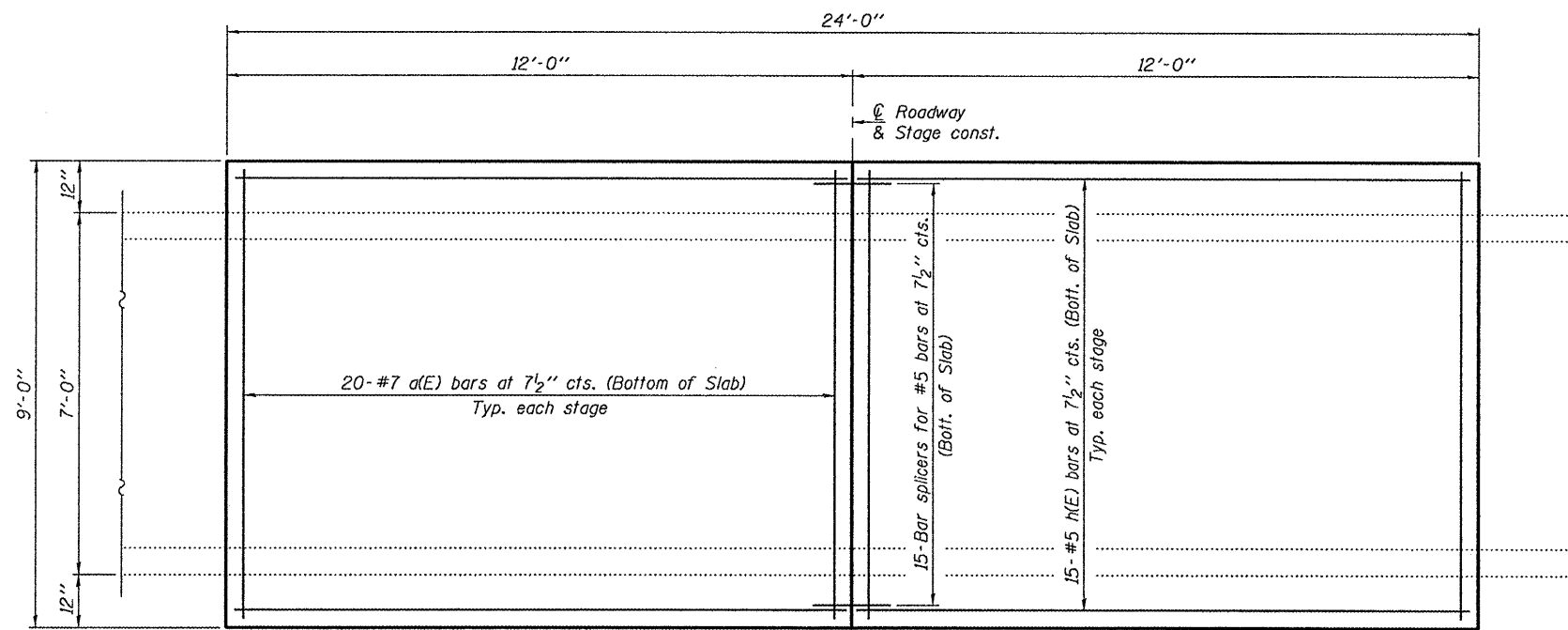


LONGITUDINAL SECTION
(North bound shown
South bound similar)



SECTION A-A

* Remove 7" of existing overlay and replace with 7" concrete slab as shown. Slope to match roadway. Cost of removal included with Partial Depth Removal (Variable Depth).



PLAN
(North bound shown
South bound similar)

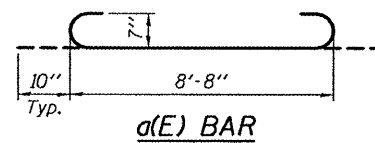
GENERAL NOTES
Plan dimensions and details relative to existing plans are subject to nominal construction variations. The Contractor shall field verify existing dimensions and details affecting new construction and make necessary approved adjustments prior to construction or ordering of materials. Such variations shall not be cause for additional compensation for a change in scope of the work, however, the Contractor will be paid for the quantity actually furnished at the unit price bid for the work.
Reinforcement bars shall conform to the requirements of ASTM A 706 Gr 60. See Special Provisions.
Reinforcement bars designated (E) shall be epoxy coated.
The slab surface shall have its final finish tined according to Article 420.09(e)(1) of the Standard Specifications. Cost included with Concrete Superstructure.

**BILL OF MATERIAL
2 CULVERTS**

Bar	No.	Size	Length	Shape
a(E)	80	#7	10'-4"	U
h(E)	60	#5	11'-8"	—
Bar Splicers		Each	30	
Partial Depth Removal (Variable Depth)		Sq. Yds.	48.0	
Reinforcement Bars, Epoxy Coated		Pound	2420	
Concrete Superstructure		Cu. Yds.	9.4	

DESIGN STRESSES

FIELD UNITS
f'c = 3,500 psi
fy = 60,000 psi (Reinf.)

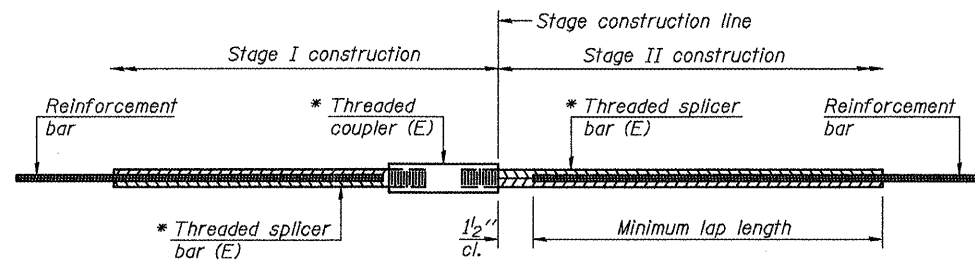


DESIGNED: <i>David Carl Puzey</i>	EXAMINED: <i>John F. [Signature]</i>	DATE: MARCH 14, 2011
CHECKED: <i>Vicki H. Valiz</i>	PASSED: <i>[Signature]</i>	
DRAWN: <i>baliva</i>		
CHECKED: <i>[Signature]</i>		

STATE OF ILLINOIS
DEPARTMENT OF TRANSPORTATION

SLAB DETAILS
LOCATION 4
SN 057-8194
SHEET NO. 1 OF 2 SHEETS

F.A.P. RTE.	SECTION	COUNTY	TOTAL SHEETS	SHEET NO.
730	POSTING MITIGATION FY2011-1	MCLEAN	23	16
CONTRACT NO. 70894			ILLINOIS FED. AID PROJECT	



STANDARD BAR SPLICER ASSEMBLY

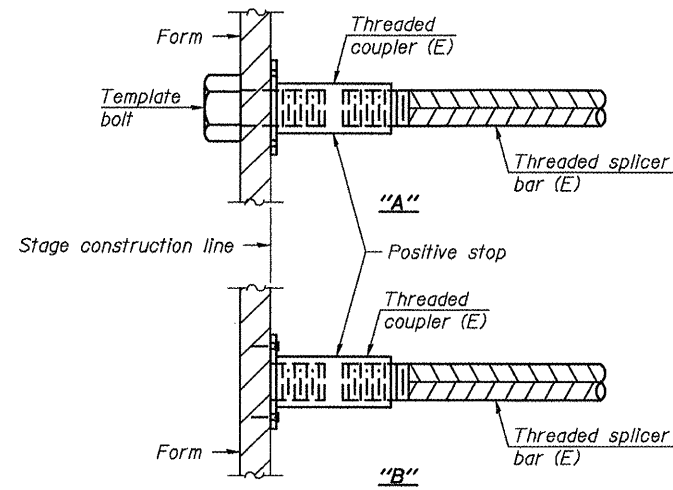
Bar size to be spliced	Minimum Lap Lengths				
	Table 1	Table 2	Table 3	Table 4	Table 5
3, 4	1'-5"	1'-11"	2'-1"	2'-4"	2'-3"
5	1'-9"	2'-5"	2'-7"	2'-11"	2'-10"
6	2'-1"	2'-11"	3'-1"	3'-6"	3'-4"
7	2'-9"	3'-10"	4'-2"	4'-8"	4'-6"
8	3'-8"	5'-1"	5'-5"	6'-2"	5'-10"
9	4'-7"	6'-5"	6'-10"	7'-9"	7'-5"

- Table 1: Black bar, 0.8 Class C
- Table 2: Black bar, Top bar lap, 0.8 Class C
- Table 3: Epoxy bar, 0.8 Class C
- Table 4: Epoxy bar, Top bar lap, 0.8 Class C
- Table 5: Epoxy bar, Top bar lap, Class B

Threaded splicer bar length = min. lap length + 1 1/2" + thread length

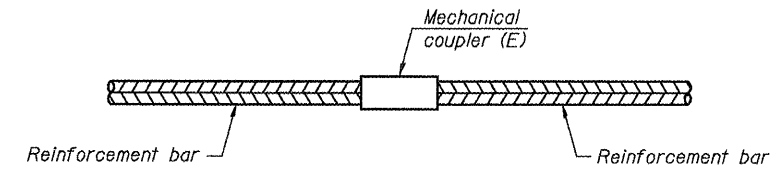
* Epoxy not required on Bar Splicer Assembly components used in conjunction with black bars.

Location	Bar size	No. assemblies required	Table for minimum lap length
Bottom of slab	#5	15	3



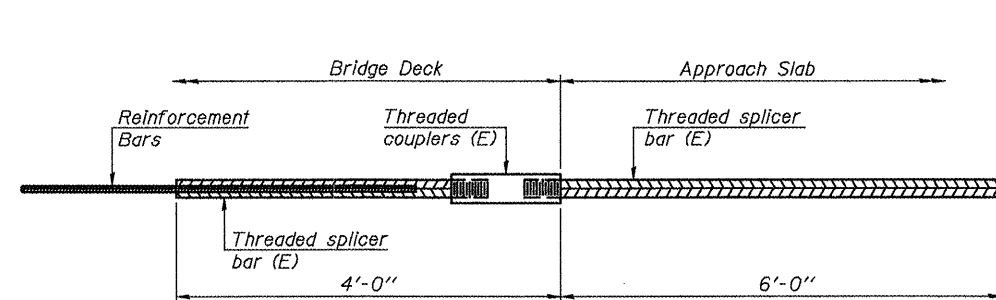
INSTALLATION AND SETTING METHODS

"A": Set bar splicer assembly by means of a template bolt.
 "B": Set bar splicer assembly by nailing to wood forms or cementing to steel forms.
 (E) : Indicates epoxy coating.



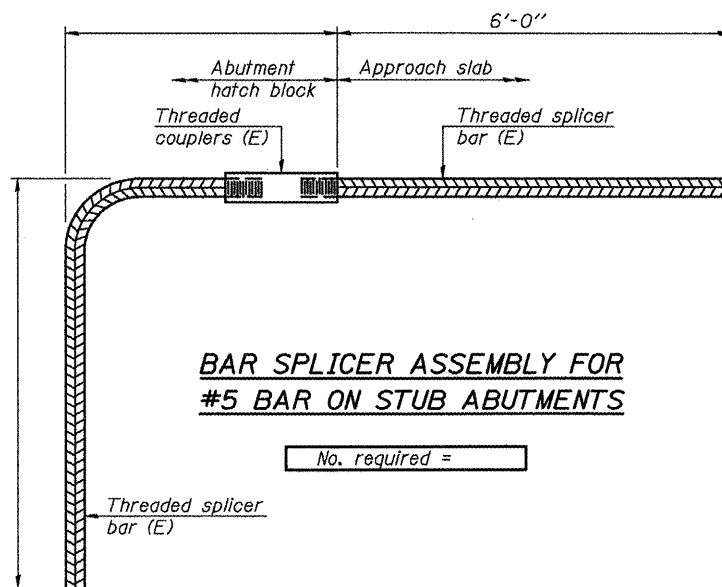
STANDARD MECHANICAL SPLICER

Location	Bar size	No. assemblies required



BAR SPLICER ASSEMBLY FOR #5 BAR ON INTEGRAL OR SEMI-INTEGRAL ABUTMENTS

No. required =



BAR SPLICER ASSEMBLY FOR #5 BAR ON STUB ABUTMENTS

No. required =

NOTES

Splicer bars shall be deformed with Threaded ends and have a minimum 60 ksi yield strength.
 All reinforcement shall be lapped and tied to the splicer bars.
 Bar splicer assemblies shall be epoxy coated according to the requirements for reinforcement bars. See Section 508 of the Standard Specifications.
 See special provision for Mechanical Splicers.
 See approved list of bar splicer assemblies and mechanical splicers for alternatives.

BSD-1 7-1-10

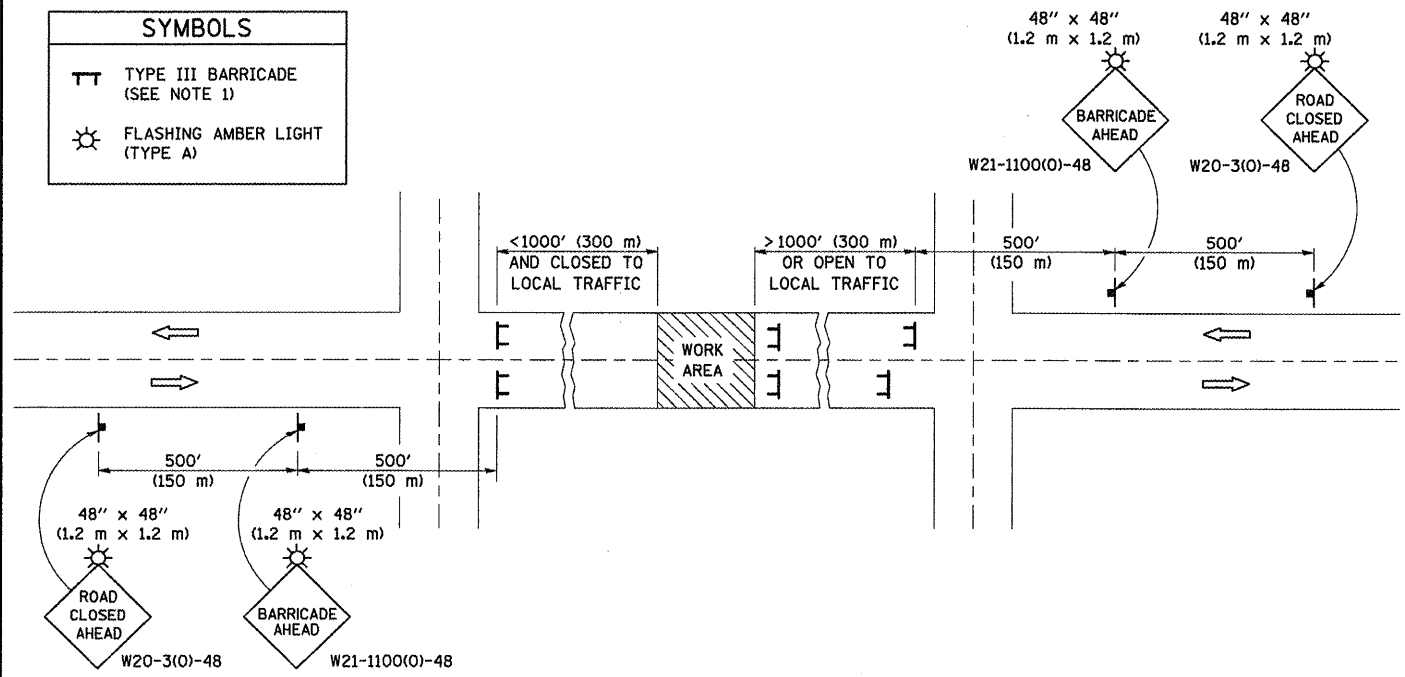
DESIGNED DAB	EXAMINED	DATE - MARCH 14, 2011
CHECKED VHV	PASSED	ACTING ENGINEER OF BRIDGES AND STRUCTURES
DRAWN baliva		
CHECKED DAB VHV		

STATE OF ILLINOIS
 DEPARTMENT OF TRANSPORTATION

BAR SPLICER ASSEMBLY AND MECHANICAL SPLICER DETAILS
 LOCATION 4
 SN 057-8194
 SHEET NO. 2 OF 2 SHEETS

F.A.P. RTE.	SECTION	COUNTY	TOTAL SHEETS	SHEET NO.
730	POSTING MITIGATION FY2011-1	MCLEAN	23	17
CONTRACT NO. 70894			ILLINOIS FED. AID PROJECT	

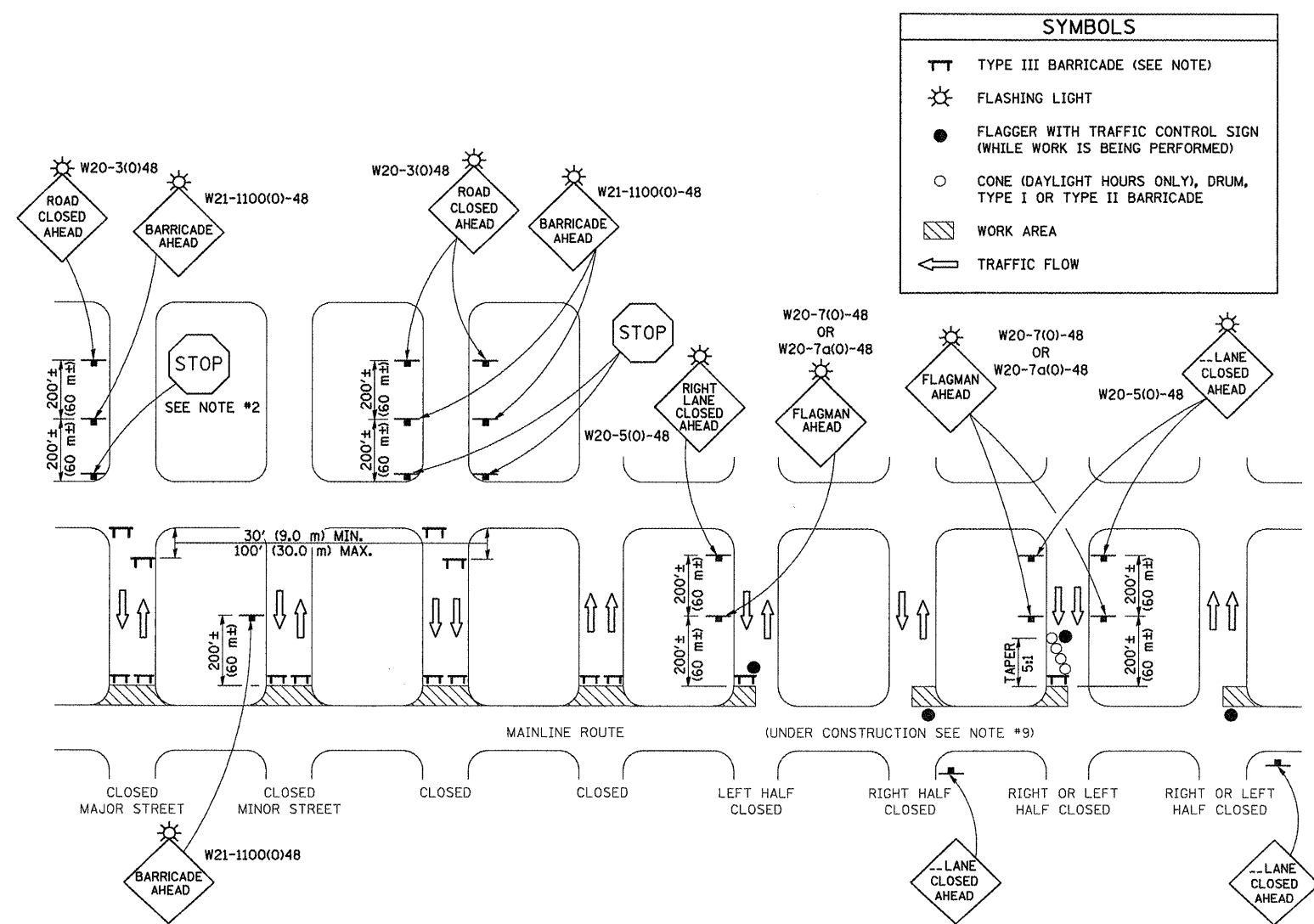
ROAD CLOSURE



GENERAL NOTES

- TYPE III BARRICADES SHALL BE AS SHOWN ON STANDARD 701901 "TYPICAL APPLICATIONS OF TYPE III BARRICADES CLOSING A ROAD". EACH TYPE III BARRICADE SHALL HAVE TWO FLASHING AMBER LIGHTS MOUNTED ABOVE IT.
- IF THE ROAD IS OPEN TO LOCAL TRAFFIC OR EXCEEDS 1000' (300 m), ANOTHER SET OF TYPE III BARRICADES, EQUIPPED AS IN NOTE 1 ABOVE, SHALL BE PLACED AT EACH END OF THE WORK AREA.
- WHEN A STOP CONDITION EXISTS, NO SIGNS ARE REQUIRED IN ADVANCE OF THE "STOP" SIGN WHEN THE ROAD IS CLOSED WITHIN 100' (30 m) OF THE INTERSECTION.
- STANDARD 701901 SHALL APPLY FOR THE PLACEMENT & DESIGN OF TYPE III BARRICADES.
- IF A TYPE III BARRICADE WITH AN ATTACHED SIGN PANEL WHICH MEETS NCHRP 350 IS NOT AVAILABLE, THE SIGNS MAY BE MOUNTED ON AN NCHRP 350 TEMPORARY SIGN SUPPORT DIRECTLY IN FRONT OF THE BARRICADE.
- REFLECTORIZED STRIPING SHALL APPEAR ON BOTH SIDES OF THE TYPE III BARRICADES IF ROAD IS OPEN TO LOCAL TRAFFIC.
- ALL SIGNS SHALL BE POST MOUNTED IF THE CLOSURE TIME EXCEEDS FOUR DAYS.
- A MINIMUM OF TWO FLASHING LIGHTS SHALL BE USED AT NIGHT ON EACH APPROACH IN ADVANCE OF THE WORK AREA. FLASHING LIGHTS SHALL BE INSTALLED ABOVE THE FIRST TWO SIGNS IN THE SERIES.
- LONGITUDINAL DIMENSIONS MAY BE ADJUSTED SLIGHTLY TO FIT FIELD CONDITIONS.
- FORMS BT. 725 AND BT. 726 ARE REQUIRED.
- WHEN A SIDEROAD INTERSECTS THE HIGHWAY ON WHICH WORK IS BEING PERFORMED, ADDITIONAL TRAFFIC DEVICES SHALL BE ERECTED AND PROVIDED AS DIRECTED BY THE ENGINEER.
- AN ADDITIONAL SIGN MAY BE REQUIRED AT A MAJOR INTERSECTING ROAD IN ADVANCE OF THE CLOSURE. THE ADDITIONAL SIGN SHALL GIVE THE DISTANCE TO THE BARRICADE IN MILES OR FRACTIONS OF A MILE.

SIDEROAD / STREET CLOSURE



GENERAL NOTES

- TYPE III BARRICADES SHALL BE AS SHOWN ON "TYPICAL APPLICATIONS OF TYPE III BARRICADES CLOSING A ROAD". EACH TYPE III BARRICADE SHALL HAVE TWO FLASHING AMBER LIGHTS MOUNTED ABOVE IT.
- WHERE A STOP CONDITION EXISTS, AS SHOWN ABOVE, WARNING SIGNS MAY BE OMITTED IN ADVANCE OF THE "STOP" SIGN.
- STANDARD 701901 SHALL APPLY FOR THE PLACEMENT & MANUFACTURE OF TYPE III BARRICADES.
- ALL SIGNS SHALL BE POST MOUNTED IF THE CLOSURE TIME EXCEEDS FOUR DAYS.
- ONE FLASHING LIGHT IS REQUIRED ABOVE EACH ADVANCE WARNING SIGN DURING HOURS OF DARKNESS.
- LONGITUDINAL DIMENSIONS MAY BE ADJUSTED SLIGHTLY TO FIT FIELD CONDITIONS.
- FORMS BT 725 AND BT 726 ARE REQUIRED.
- THE MAINLINE ROUTE TEMPORARY TRAFFIC CONTROL SHALL BE IN ACCORDANCE WITH THE PLANS, SPECIAL PROVISIONS AND STANDARD SPECIFICATIONS.
- ALL FLAGGERS REQUIRED AT SIDE ROADS AND ENTRANCES REMAINING OPEN TO TRAFFIC AND/OR ADDITIONAL BARRICADES REQUIRED BY THE ENGINEER TO CLOSE SIDE ROADS AND ENTRANCES WILL BE PAID FOR ACCORDING TO ARTICLE 109.04.

SYMBOLS	
	TYPE III BARRICADE (SEE NOTE 1)
	FLASHING LIGHT
	FLAGGER WITH TRAFFIC CONTROL SIGN (WHILE WORK IS BEING PERFORMED)
	CONE (DAYLIGHT HOURS ONLY), DRUM, TYPE I OR TYPE II BARRICADE
	WORK AREA
	TRAFFIC FLOW

Note: All dimensions are in INCHES (millimeters) unless otherwise shown.

• ROUTES VARIOUS
 ** POSTING MITIGATION FY2011-1
 *** DEWITT / MCLEAN

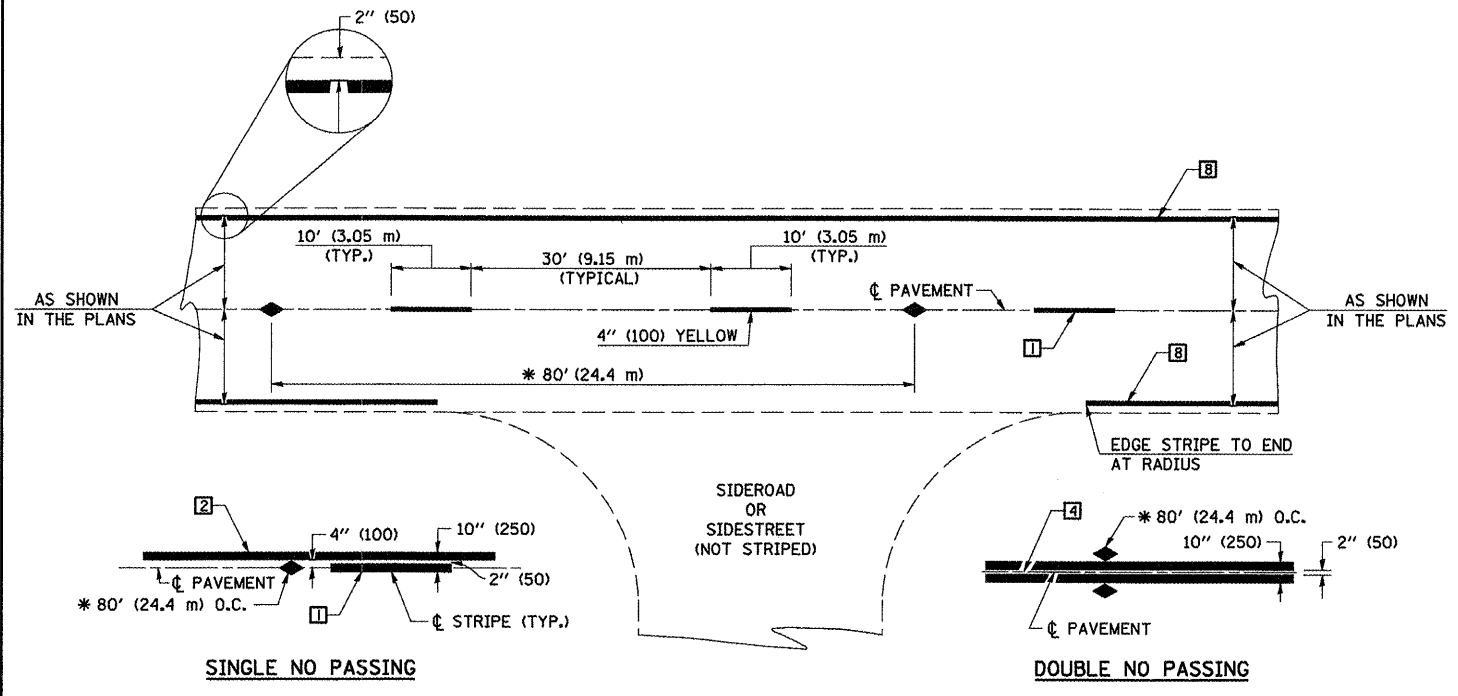
DISTRICT 5 DETAIL NO. 70200000

FILE NAME =	USER NAME = keja-b	DESIGNED -	REVISED - 11/06
e:\pwork\pwork\keja-b\d0248870\DS78894-shit-Detail.dgn		DRAWN -	REVISED - 12/07
PLOT SCALE = 48.0000" / IN.		CHECKED -	REVISED - 09/09 - KJT
PLOT DATE = 2/3/2011		DATE -	REVISED -

STATE OF ILLINOIS
 DEPARTMENT OF TRANSPORTATION

TRAFFIC CONTROL & PROTECTION DEVICES (ROAD & SIDEROAD/STREET CLOSURES)			
SCALE:	SHEET NO.	OF SHEETS	STA. TO STA.

F.A.P. RTE.	SECTION	COUNTY	TOTAL SHEETS	SHEET NO.
	**	***	23	18
CONTRACT NO. 70894				
FED. ROAD DIST. NO. ILLINOIS FED. AID PROJECT				



* REDUCE TO 40' (12.2 m) O.C. ON CURVES WITH POSTED OR ADVISORY SPEEDS OF 45 mph (70 km/h) OR LESS.

TWO LANE/TWO WAY

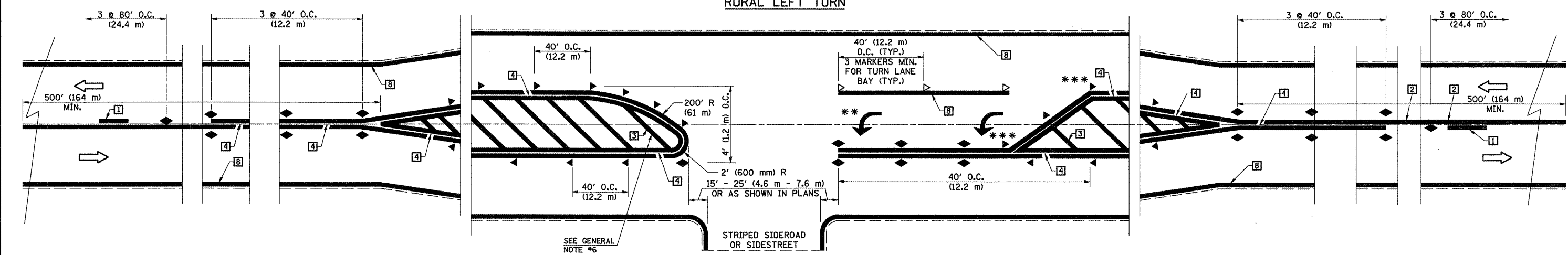
TYPICAL PAVEMENT MARKING LEGEND

- 1 4" (100) SKIP-DASH (YELLOW)
- 2 4" (100) SOLID (YELLOW)
- 3 12" (300) DIAGONAL (YELLOW)
- 4 4" (100) DOUBLE YELLOW (NARROW)
- 5 RESERVED
- 6 RESERVED
- 7 4" (100) SKIP-DASH (WHITE)
- 8 4" (100) SOLID (WHITE)
- 9 12" (300) DIAGONAL (WHITE)
- 10 6" (150) SOLID (WHITE)
- 11 24" (600) STOP BAR (WHITE)
- 12 8" (200) SOLID (WHITE)
- 13 4" (100) LANE LINE EXTENSIONS (WHITE)
- 14 4" (100) PARKING WHITE

TYPICAL PAVEMENT MARKERS LEGEND

- ◆ TWO-WAY AMBER MARKER
- ▶ ONE-WAY AMBER MARKER
- ▷ ONE-WAY CRYSTAL MARKER

RURAL LEFT TURN



*** REDUCE SPACING IF NECESSARY TO ASSURE MARKERS AT CORNER POINTS.
 ** TURN ARROWS SHALL BE PLACED AS SHOWN ON SHEET #2.

Note: All dimensions are in INCHES (millimeters) unless otherwise shown.

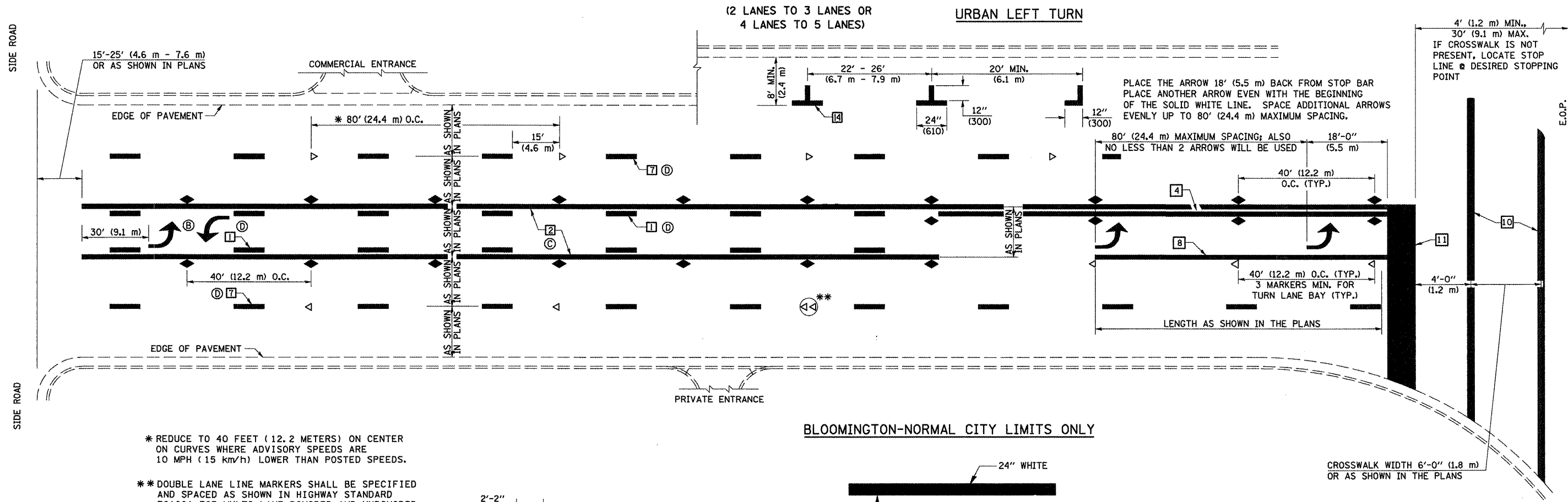
- ROUTES VARIOUS
- ** POSTING MITIGATION FY2011-1
- *** DEWITT / MCLEAN

FILE NAME =	USER NAME = keyar-b	DESIGNED -	REVISED - 11/06
es:\p\work\p\dot\keyar-b\d024867\0\057894-sht-Detail.dgn		DRAWN -	REVISED - 09/2009 - KJT
PLOT SCALE = 40.0000" / IN.		CHECKED -	REVISED -
PLOT DATE = 2/3/2011		DATE -	REVISED -

**STATE OF ILLINOIS
DEPARTMENT OF TRANSPORTATION**

PAVEMENT MARKING AND MARKERS (RURAL & URBAN APPLICATIONS)	
SCALE:	SHEET NO. 1 OF 4 SHEETS STA. TO STA.

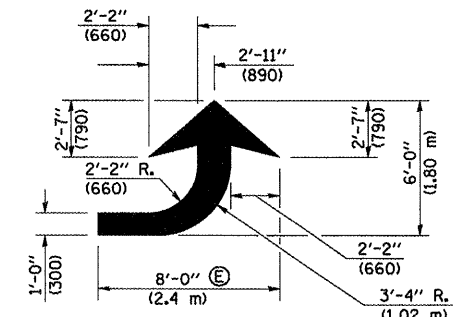
DISTRICT 5 DETAIL NO. 7800AAAA				
F.A.P. RTE.	SECTION	COUNTY	TOTAL SHEETS	SHEET NO.
•	**	***	23	19
CONTRACT NO. T0894				
FED. ROAD DIST. NO. ILLINOIS FED. AID PROJECT				



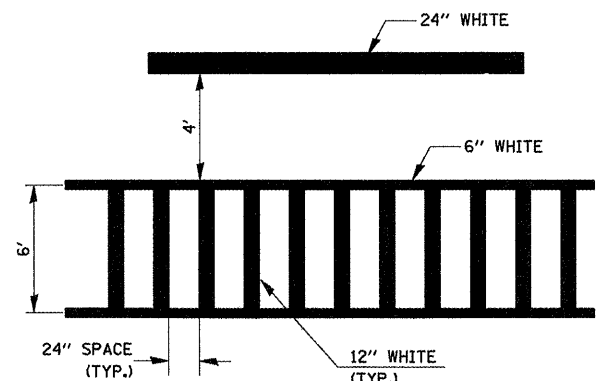
* REDUCE TO 40 FEET (12.2 METERS) ON CENTER ON CURVES WHERE ADVISORY SPEEDS ARE 10 MPH (15 Km/h) LOWER THAN POSTED SPEEDS.

** DOUBLE LANE LINE MARKERS SHALL BE SPECIFIED AND SPACED AS SHOWN IN HIGHWAY STANDARD 781001 FOR MULTI-LANE DIVIDED AND UNDIVIDED HIGHWAYS.

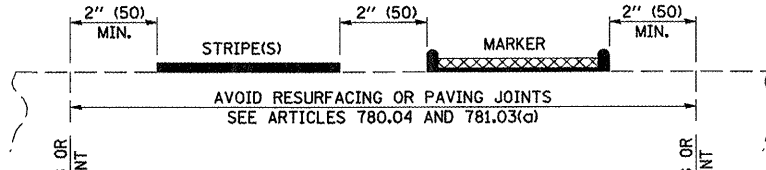
BLOOMINGTON-NORMAL CITY LIMITS ONLY



LEFT ARROW
REVERSE FOR RIGHT ARROW
AREA = 15.6 SQ. FT. (1.47 m²)
(WHITE)



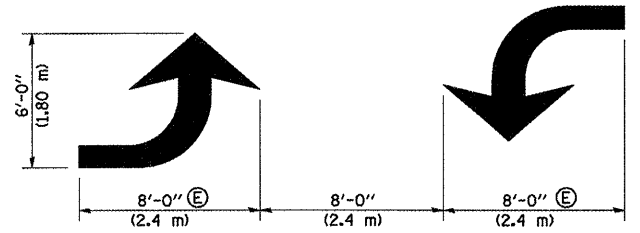
**TYPICAL SPACING FOR
CROSSWALKS & STOP BARS**



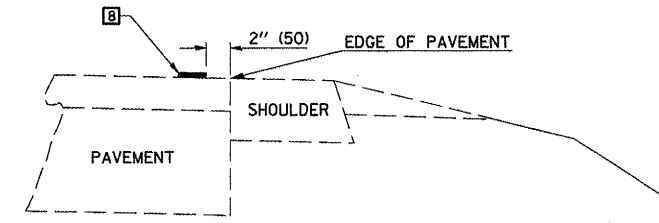
**RELATIONSHIP OF STRIPES,
MARKERS AND JOINTS**

GENERAL NOTES:

- ⓑ TURN ARROW PAIRS SHALL BE PLACED AT 250' (75 m) INTERVALS AND SHALL BE EVENLY SPACED BETWEEN BOTH ENDS OF THE BIDIRECTIONAL LEFT TURN LANE.
- ⓒ THE SOLID YELLOW PAVEMENT MARKINGS [2] SHOULD GENERALLY START OR END NEAR THE RADIUS POINT OF EACH STREET RETURN EXCEPT WHERE ONE OR BOTH ENDS WOULD INCLUDE STOP BARS.
- ⓓ THE SKIP-DASH PAVEMENT MARKINGS [1] OR [7] SHOULD BE CENTERED BETWEEN BOTH ENDS OF EACH CITY BLOCK AND SHALL BE PLACED SO THEY LINE UP ACROSS FROM EACH OTHER. SEE EXAMPLE ON SHEET 2 OF 3.
- ⓔ USE LARGE ARROW SIZE FOR BOTH RURAL AND URBAN LOCATIONS. (SEE LAST PAGE OF SECTION 780x FOR SYMBOLS TABLE)



**TYPICAL DOUBLE
TURN ARROWS (WHITE)**



RELATIONSHIP OF EDGE LINE TO EDGE OF PAVEMENT
(SAFETY SHOULDER OR PAVED SURFACE)
SEE ARTICLE 780.04

- ROUTES VARIOUS
- ** POSTING MITIGATION FY2011-1
- *** DEWITT / MCLEAN

Note: All dimensions are in INCHES (millimeters) unless otherwise shown.

DISTRICT 5 DETAIL NO. 7800AAAA

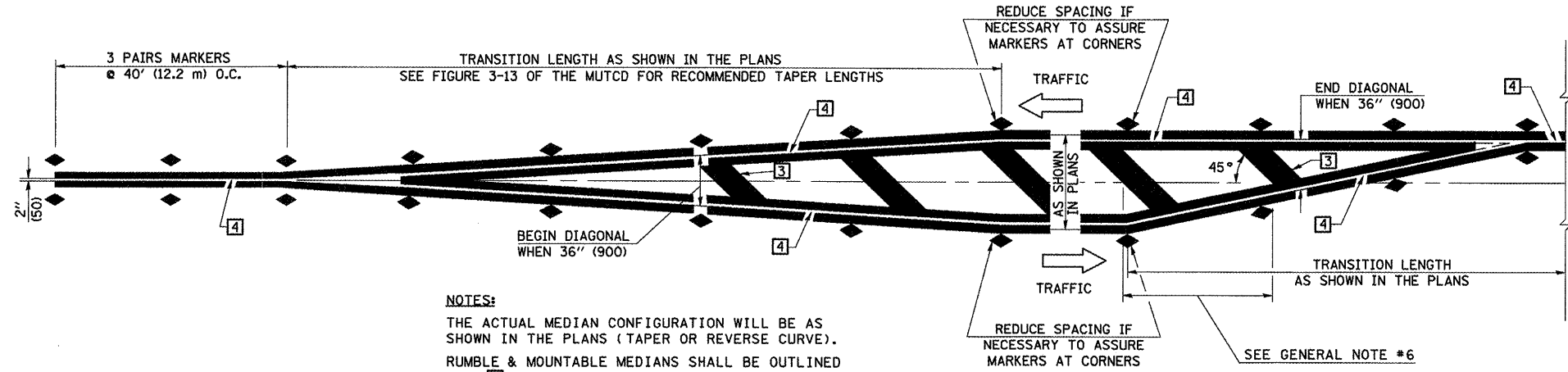
FILE NAME =	USER NAME = keyarb	DESIGNED -	REVISED - 11/06
et:\pw_work\pwwdot\keyarb\d0248870\05788934-shd-Detail.dgn		DRAWN -	REVISED - 09/2009 - KJT
PLOT SCALE = 48.0000 / IN.		CHECKED -	REVISED -
PLOT DATE = 2/3/2011		DATE -	REVISED -

**STATE OF ILLINOIS
DEPARTMENT OF TRANSPORTATION**

**PAVEMENT MARKING AND MARKERS
(RURAL & URBAN APPLICATIONS)**

SCALE: SHEET NO. 2 OF 4 SHEETS STA. TO STA.

F.A.P. RTE.	SECTION	COUNTY	TOTAL SHEETS	SHEET NO.
*	**	***	23	20
CONTRACT NO. T0894				
FED. ROAD DIST. NO. ILLINOIS FED. AID PROJECT				

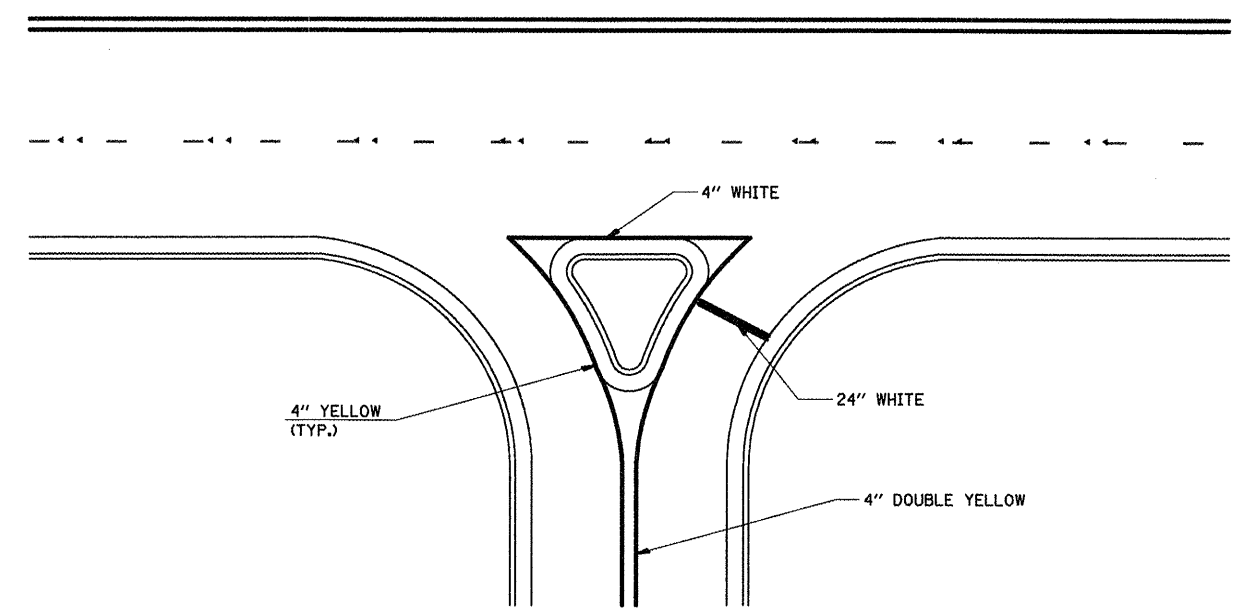


NOTES:
 THE ACTUAL MEDIAN CONFIGURATION WILL BE AS SHOWN IN THE PLANS (TAPER OR REVERSE CURVE).
 RUMBLE & MOUNTABLE MEDIANS SHALL BE OUTLINED WITH [2].

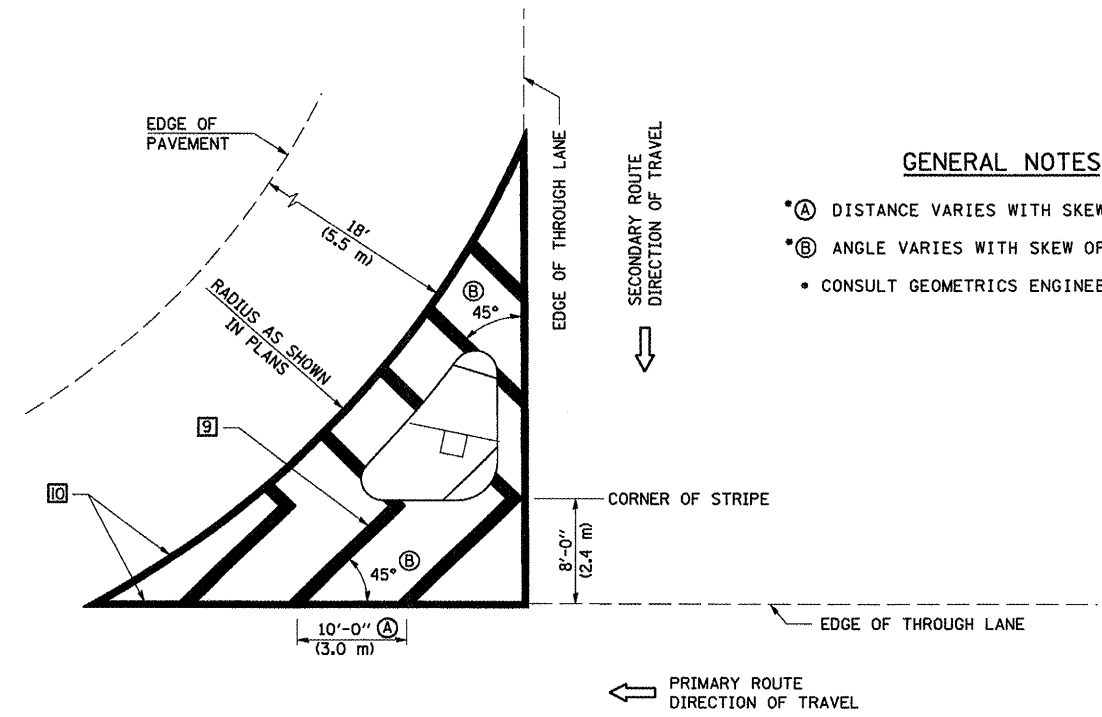
TYPICAL MEDIAN TRANSITIONS

GENERAL NOTES

1. WHEN MEDIANS ARE PRESENT, PAVEMENT MARKINGS ARE TO BE PLACED ADJACENT TO MEDIANS.
2. SOME OF THE INFORMATION INCLUDED WITH THIS DETAIL MAY NOT BE APPLICABLE TO THIS IMPROVEMENT.
3. PAVEMENT MARKINGS ARE TO BE EXTENDED THROUGH OMISSIONS WHEN APPLICABLE.
4. A STRIPING KEY IS AVAILABLE ELSEWHERE AND SHALL BE SHOWN WHERE THE QUANTITIES ARE LISTED.
5. FINAL PAVEMENT MARKINGS SHALL BE IN PLACE PRIOR TO PLACING ANY RAISED REFLECTIVE PAVEMENT MARKERS.
6. THE FOLLOWING CRITERIA SHALL BE USED FOR SELECTING THE DIAGONAL PAVEMENT MARKING SPACING,
 < 30 MPH USE 15' (< 50 km/h USE 4.5 m)
 30-45 MPH USE 20' (50-75 km/h USE 6.0 m)
 > 45 MPH USE 30' (> 75 km/h USE 9.0 m)



RIGHT IN - RIGHT OUT ACCESS



ISLAND

GENERAL NOTES

- (A) DISTANCE VARIES WITH SKEW OF INTERSECTION.
- (B) ANGLE VARIES WITH SKEW OF INTERSECTION.
- CONSULT GEOMETRICS ENGINEER

Note: All dimensions are in INCHES (millimeters) unless otherwise shown.

- ROUTES VARIOUS
- POSTING MITIGATION FY2011-1
- DEWITT / MCLEAN

DISTRICT 5 DETAIL NO. 7800AAAA

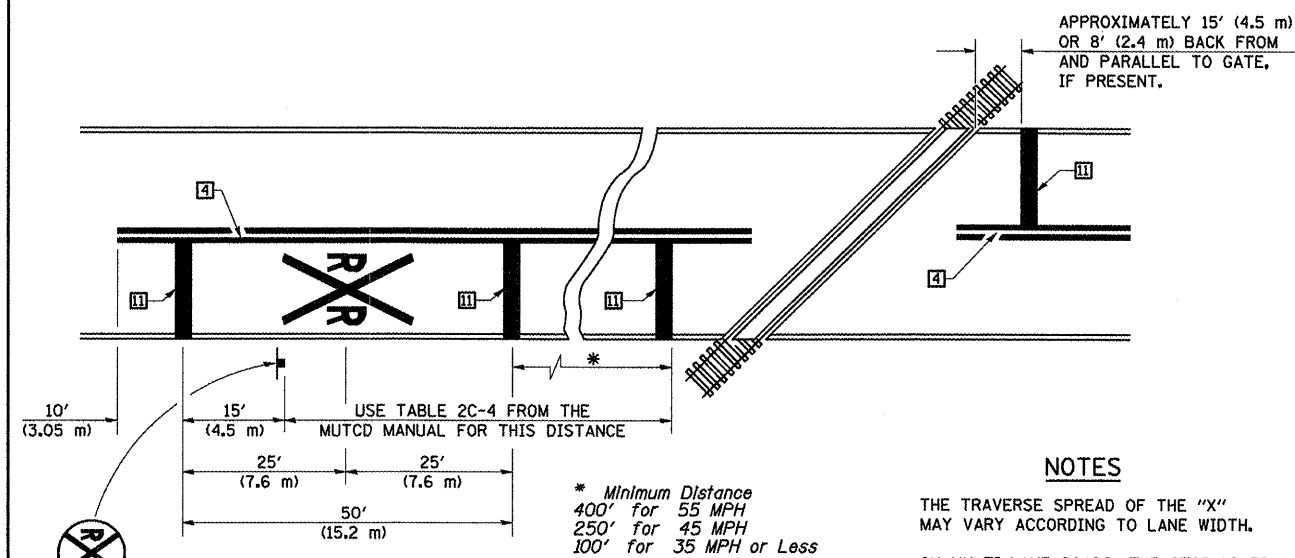
FILE NAME =	USER NAME = keyarb	DESIGNED -	REVISED - 11/06
cr\pw_work\p\dot\keyarb\08248878\057800\4-ht-Detail.dgn		DRAWN -	REVISED - 09/2009 - KJT
PLOT SCALE = 40.0000' / IN.		CHECKED -	REVISED -
PLOT DATE = 2/3/2011		DATE -	REVISED -

**STATE OF ILLINOIS
 DEPARTMENT OF TRANSPORTATION**

**PAVEMENT MARKING AND MARKERS
 (RURAL & URBAN APPLICATIONS)**

F.A.P. RTE.	SECTION	COUNTY	TOTAL SHEETS	SHEET NO.
•	••	•••	23	21
CONTRACT NO. 70894				
FED. ROAD DIST. NO. ILLINOIS FED. AID PROJECT				

SCALE: SHEET NO. 3 OF 4 SHEETS STA. TO STA.



PAVEMENT MARKINGS AT RAILROAD-HIGHWAY GRADE CROSSING

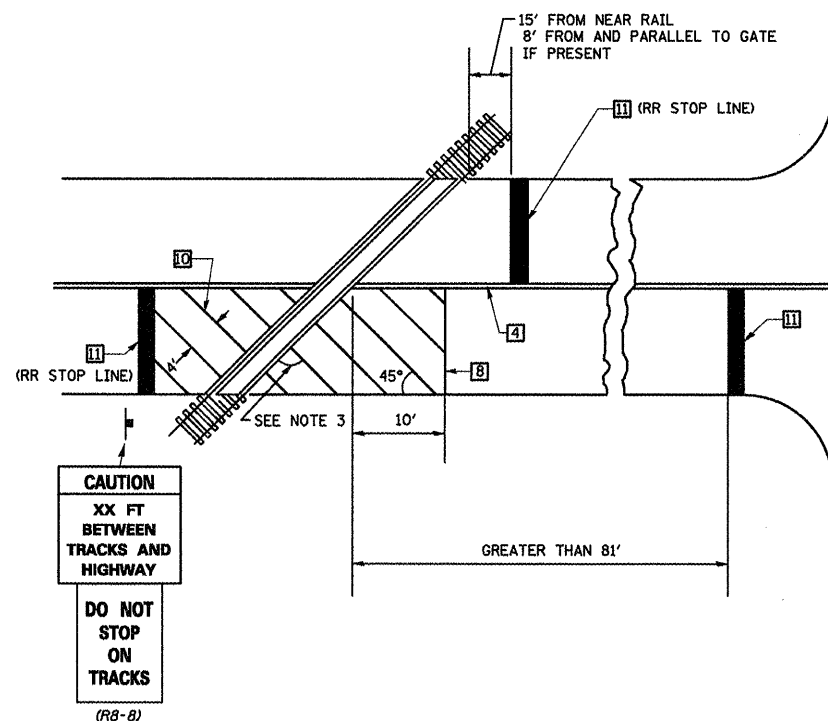
NOTES

THE TRAVERSE SPREAD OF THE "X" MAY VARY ACCORDING TO LANE WIDTH.

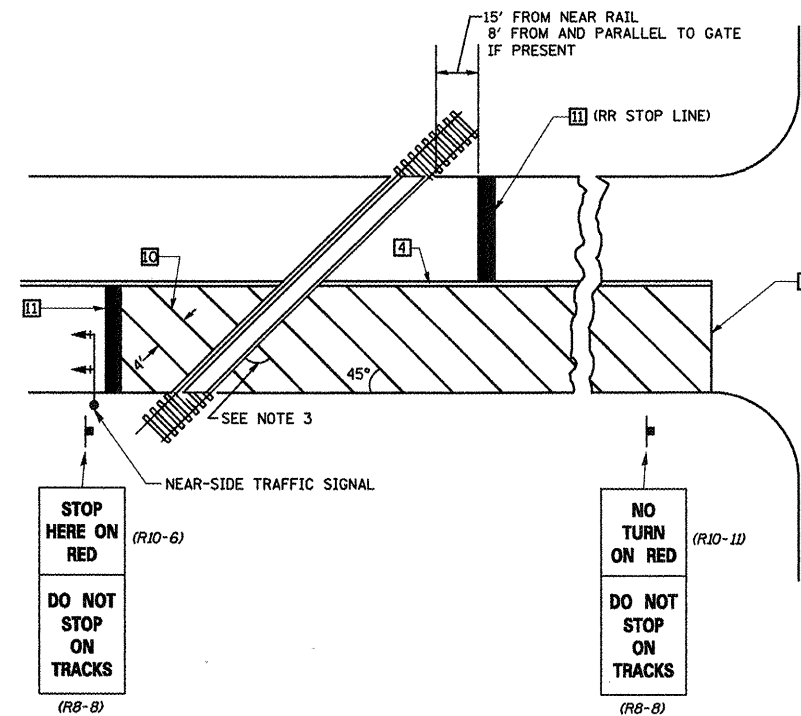
ON MULTI-LANE ROADS, THE STOP LINES SHALL EXTEND ACROSS ALL APPROACH LANS AND SEPARATE RXR SYMBOLS SHALL BE PLACED ADJACENT TO EACH OTHER IN EACH LANE.

WHEN THE PAVEMENT MARKING SYMBOL IS USED, A PORTION OF THE SYMBOL SHOULD BE LOCATED DIRECTLY ADJACENT TO THE ADVANCE WARNING SIGN (W10-1) AS PLACED BY TABLE II-1, CONDITION B OF THE MUTCD.

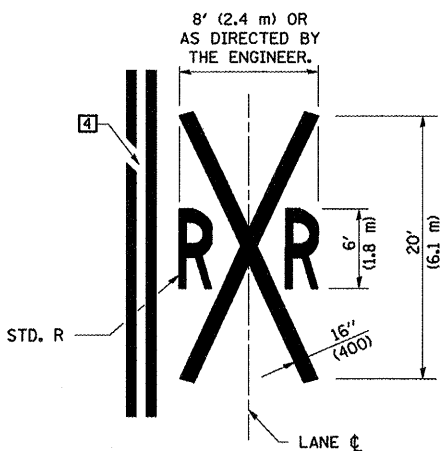
RAILROAD CROSSING WITH INTERCONNECT ONLY



RAILROAD CROSSING WITH INTERCONNECT AND PRE-SIGNALS



SUPPLEMENTAL PAVEMENT MARKING TREATMENT FOR RAILROAD-HIGHWAY GRADE CROSSING



GENERAL NOTES

- SUPPLEMENTAL PAVEMENT MARKINGS TO BE INSTALLED ONLY ON APPROACHES TO INTERSECTIONS CONTROLLED BY TRAFFIC SIGNALS WHICH ARE INTERCONNECTED WITH THE RAILROAD WARNING SIGNALS.
- EXTEND PAVEMENT MARKINGS TO THE INTERSECTION ONLY WHERE NEAR-SIDE TRAFFIC SIGNALS ARE USED.
- WHERE THE ANGLE BETWEEN THE DIAGONAL PAVEMENT MARKINGS AND THE TRACK WOULD BE LESS THAN 20°, THE PAVEMENT MARKINGS SHOULD BE PLACED IN THE OPPOSITE DIRECTION FROM THAT SHOWN.

- ROUTES VARIOUS
- ** POSTING MITIGATION FY2011-1
- *** DEWITT / MCLEAN

Note: All dimensions are in INCHES (millimeters) unless otherwise shown.

DISTRICT 5 DETAIL NO. 7800AAAA

FILE NAME =	USER NAME = keyarb	DESIGNED -	REVISED - 11/06
c:\pwork\pwork\keyarb\d0248870\057800	4-shd-Details.dgn	DRAWN -	REVISED - 09/2009 - KJT
	PLOT SCALE = 40,0000 ' / IN.	CHECKED -	REVISED -
	PLOT DATE = 2/3/2011	DATE -	REVISED -

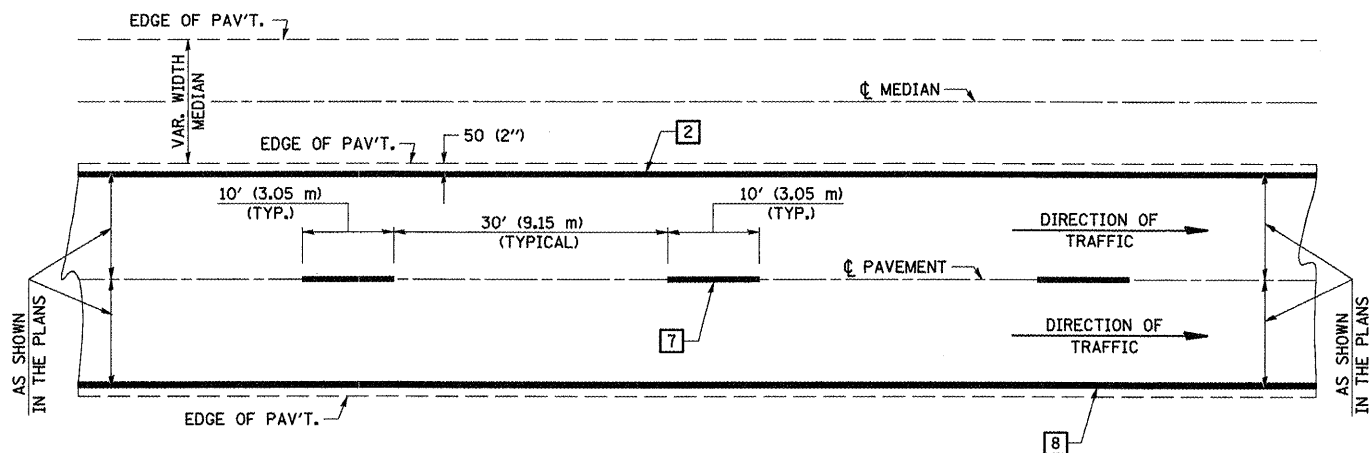
STATE OF ILLINOIS DEPARTMENT OF TRANSPORTATION

PAVEMENT MARKING AND MARKERS (RURAL & URBAN APPLICATIONS)

SCALE: SHEET NO. 4 OF 4 SHEETS STA. TO STA.

F.A.P. RTE.	SECTION	COUNTY	TOTAL SHEETS	SHEET NO.
•	••	•••	23	22
CONTRACT NO. 70894				
FED. ROAD DIST. NO. [ILLINOIS] FED. AID PROJECT				

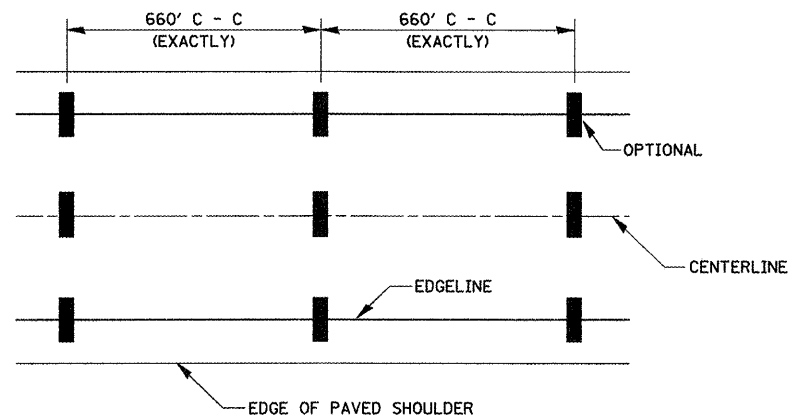
CENTERLINE INTERSTATE OR MULTI-LANE TWO WAY DIVIDED HIGHWAY



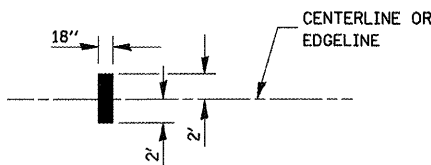
NOTE: PAVEMENT MARKINGS ARE TO BE EXTENDED THROUGH OMISSIONS WHEN APPLICABLE.

NOTE: SEE ARTICLES 780.04 & 781.03 FOR LOCATION OF STRIPES AND MARKERS RELATIVE TO EDGES OR JOINTS.

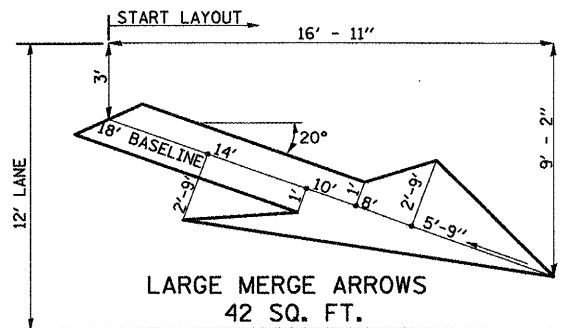
FOR RAISED REFLECTIVE PAVEMENT MARKERS, REFER TO STANDARD 781001.



IT WILL BE NECESSARY TO HAVE A REPRESENTATIVE OF THE STATE POLICE PRESENT SO THAT THE ACCURACY OF MEASUREMENT CAN BE ATTESTED TO IN COURT.

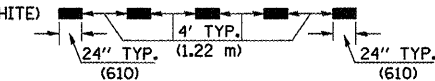
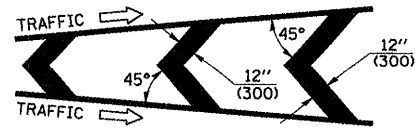
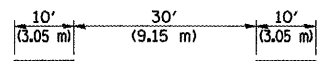
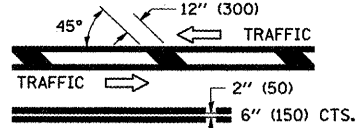
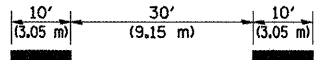


AERIAL SPEED CHECK ZONES

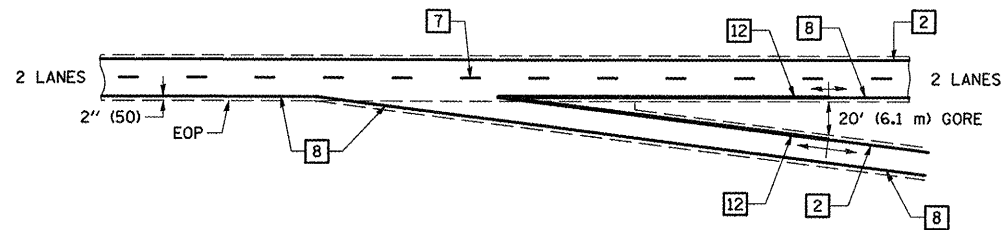


TYPICAL PAVEMENT MARKING LEGEND

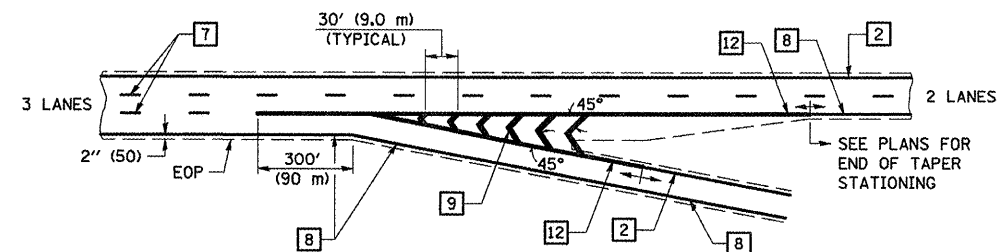
- 1 4" (100) SKIP-DASH (YELLOW)
- 2 4" (100) SOLID (YELLOW)
- 3 12" (300) DIAGONAL (YELLOW)
- 4 4" (100) DOUBLE YELLOW (NARROW)
- 5 RESERVED
- 6 RESERVED
- 7 4" (100) SKIP-DASH (WHITE)
- 8 4" (100) SOLID (WHITE)
- 9 12" (300) DIAGONAL (WHITE)
- 10 6" (150) SOLID (WHITE)
- 11 24" (600) STOP BAR (WHITE)
- 12 8" (200) SOLID (WHITE)
- 13 4" (100) LANE LINE EXTENSIONS (WHITE)



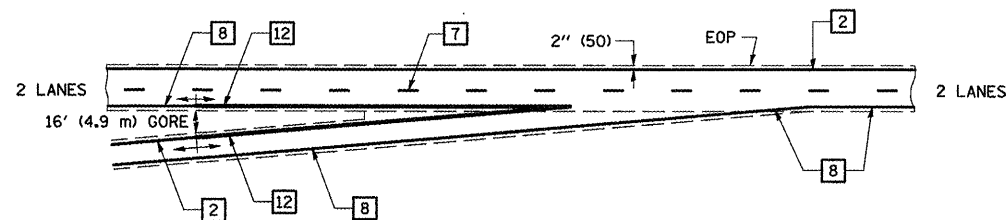
TYPICAL EXIT RAMP TERMINAL



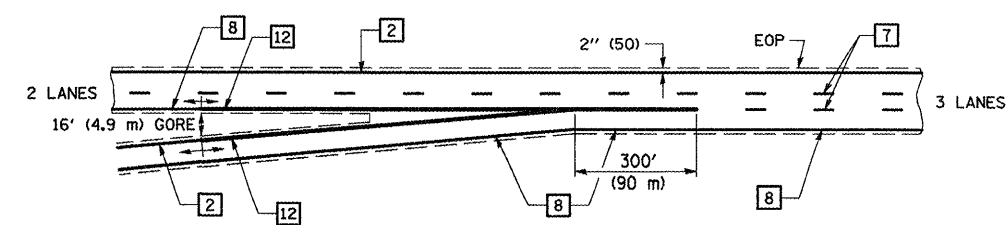
EXIT RAMP TERMINAL with EXCLUSIVE (auxiliary) LANE



TYPICAL ENTRANCE RAMP TERMINAL



ENTRANCE RAMP TERMINAL with EXCLUSIVE LANE



Note: All dimensions are in INCHES (millimeters) unless otherwise shown.

- ROUTES VARIOUS
- POSTING MITIGATION FY2011-1
- DEWITT / MCLEAN

DISTRICT 5 DETAIL NO. 7800BBBB

FILE NAME =	USER NAME = keyarb	DESIGNED -	REVISED - 11/06
o:\p\work\p\dot\keyarb\d248878\0570894-sht-Details.dgn		DRAWN -	REVISED -
PLOT SCALE = 1/8" = 1'		CHECKED -	REVISED -
PLOT DATE = 2/3/2011		DATE -	REVISED -

STATE OF ILLINOIS
DEPARTMENT OF TRANSPORTATION

PAVEMENT MARKING (INTERSTATE & MULTI-LANE APPLICATIONS)

SCALE: SHEET NO. OF SHEETS STA. TO STA.

F.A.P. RTE.	SECTION	COUNTY	TOTAL SHEETS	SHEET NO.
•	••	•••	23	23
CONTRACT NO. 70894			ILLINOIS FED. AID PROJECT	