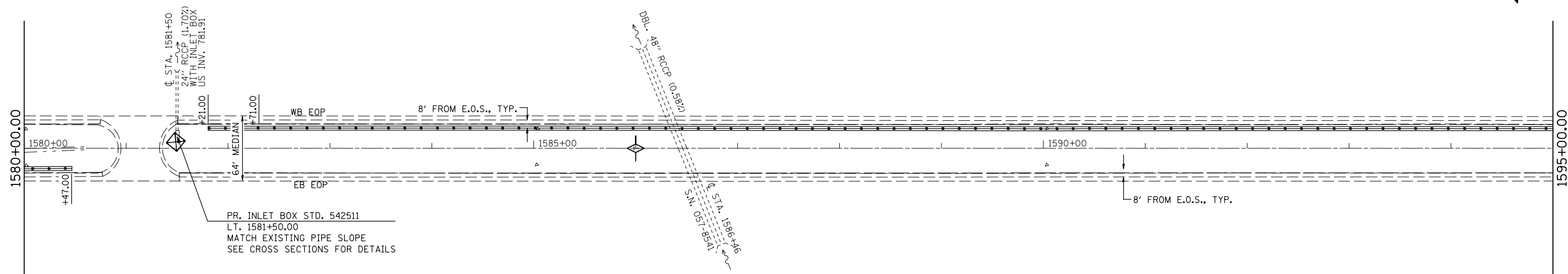
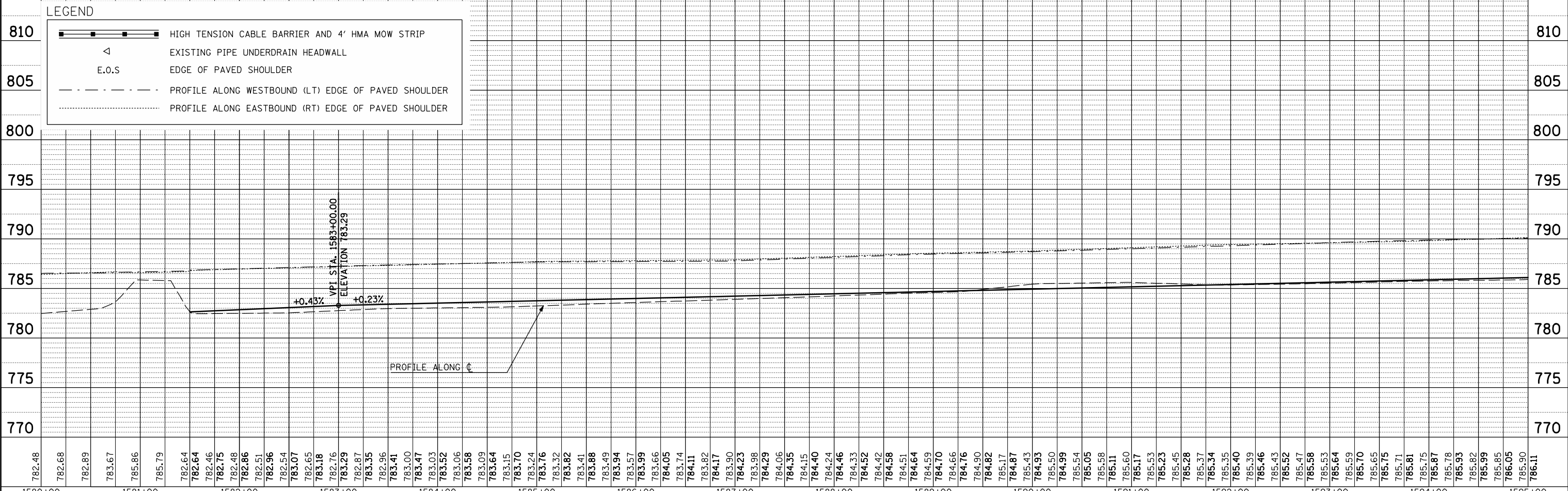


PLAN	SURVEYED	BY	DATE
	PLOTTED		
	CHECKED		
	DATE		
	FILE NAME		



MEDIAN INLET BOX REMOVAL - 1 EACH
 PIPE CULVERT, CL A, TY1, 24" - 4 FOOT
 CONCRETE COLLAR - 0.45 CU YD

PROFILE	SURVEYED	BY	DATE
	PLOTTED		
	CHECKED		
	DATE		
	FILE NAME		



FILE NAME =	USER NAME = keyarb	DESIGNED -	REVISED -
ct:\pw\work\p\dot\keysrb\d0261049\0570927	shht-plnpr_f_50.dgn	DRAWN -	REVISED -
	PLOT SCALE = 100.0000' / IN.	CHECKED -	REVISED -
	PLOT DATE = 3/25/2011	DATE -	REVISED -

**STATE OF ILLINOIS
 DEPARTMENT OF TRANSPORTATION**

PLAN AND PROFILE

SCALE: SHEET NO. OF SHEETS STA. TO STA.

F.A.I. RTE.	SECTION	COUNTY	TOTAL SHEETS	SHEET NO.
74	FY11 HSIP-5	MCLEAN	101	11
CONTRACT NO. 70927			ILLINOIS FED. AID PROJECT	