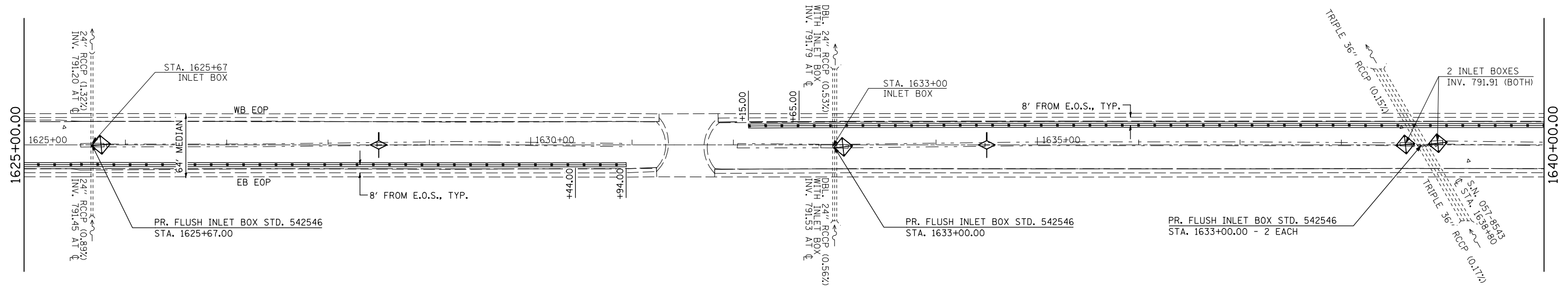


PLAN	SURVEYED	BY	DATE
	PLOTTED		
	NOTED		
	CHECKED		
	FILE NAME		

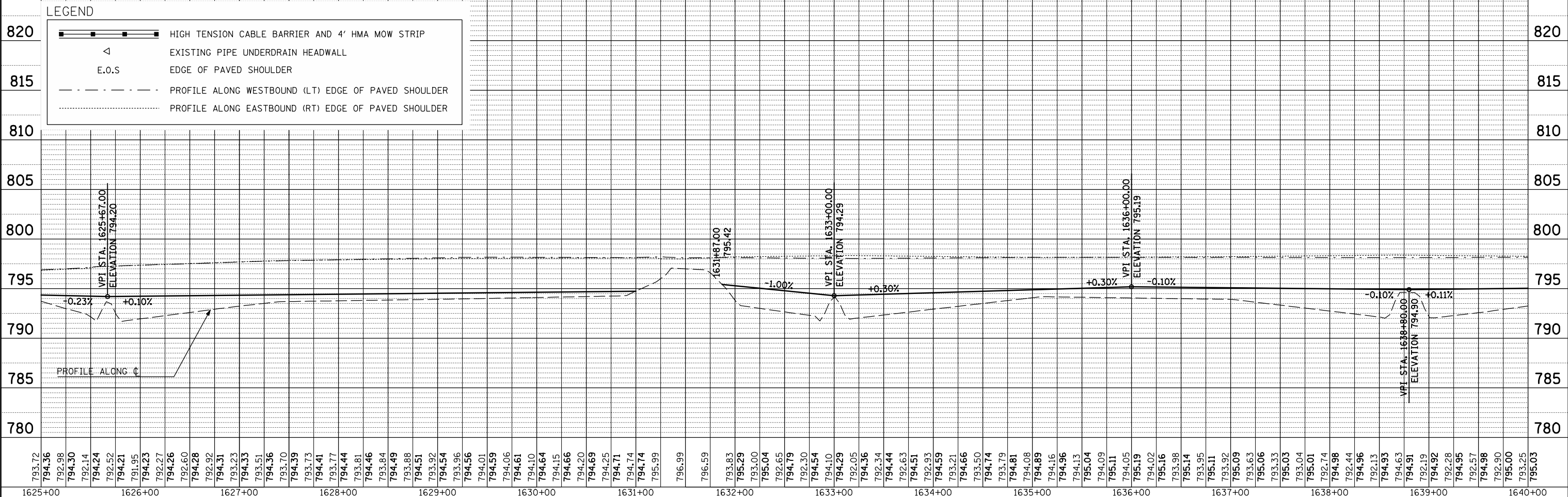


MEDIAN INLET BOX REMOVAL - 1 EACH
 PIPE CULVERT, CL A, TY1, 24" - 4 FOOT
 CONCRETE COLLAR - 0.9 CU YD

MEDIAN INLET BOX REMOVAL - 1 EACH
 PIPE CULVERT, CL A, TY1, 24" - 10 FOOT
 24" PIPE TEE WITH 24" RISER - 1 EACH
 CONCRETE COLLAR - 1.8 CU YD

MEDIAN INLET BOX REMOVAL - 2 EACH
 PIPE CULVERT, CL A, TY1, 24" - 12 FOOT
 PIPE CULVERT, CL A, TY1, 36" - 16 FOOT
 36" PIPE TEE WITH 24" RISER - 2 EACH
 CONCRETE COLLAR - 4.14 CU YD

PROFILE	SURVEYED	BY	DATE
	PLOTTED		
	GRADES CHECKED		
	STRUCTURE NOTATIONS OK'D		



FILE NAME =	USER NAME = keyarb	DESIGNED -	REVISED -
ct:\pwwork\pwwork\keyarb\d0261049\0570927	shh-plnpr.f_50.dgn	DRAWN -	REVISED -
	PLOT SCALE = 100.0000' / IN.	CHECKED -	REVISED -
	PLOT DATE = 3/25/2011	DATE -	REVISED -

**STATE OF ILLINOIS
 DEPARTMENT OF TRANSPORTATION**

PLAN AND PROFILE

SCALE: SHEET NO. OF SHEETS STA. TO STA.

F.A.I. RTE.	SECTION	COUNTY	TOTAL SHEETS	SHEET NO.
74	FY11 HSP-5	MCLEAN	101	14
CONTRACT NO. 70927			ILLINOIS FED. AID PROJECT	