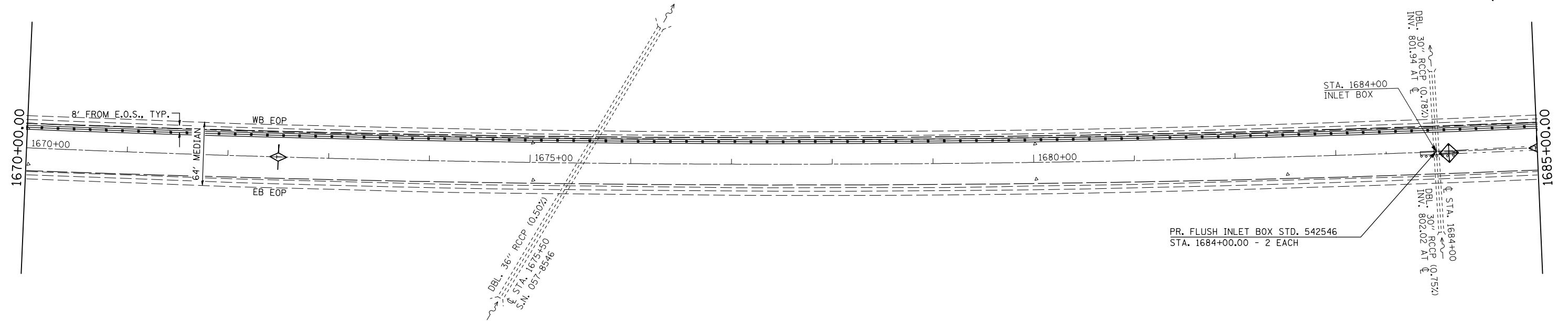


PLAN	SURVEYED	BY	DATE
NOTE BOOK NO.	PLOTTED		
	CHECKED		
	ALIGNED		
	CAD FILE NAME		

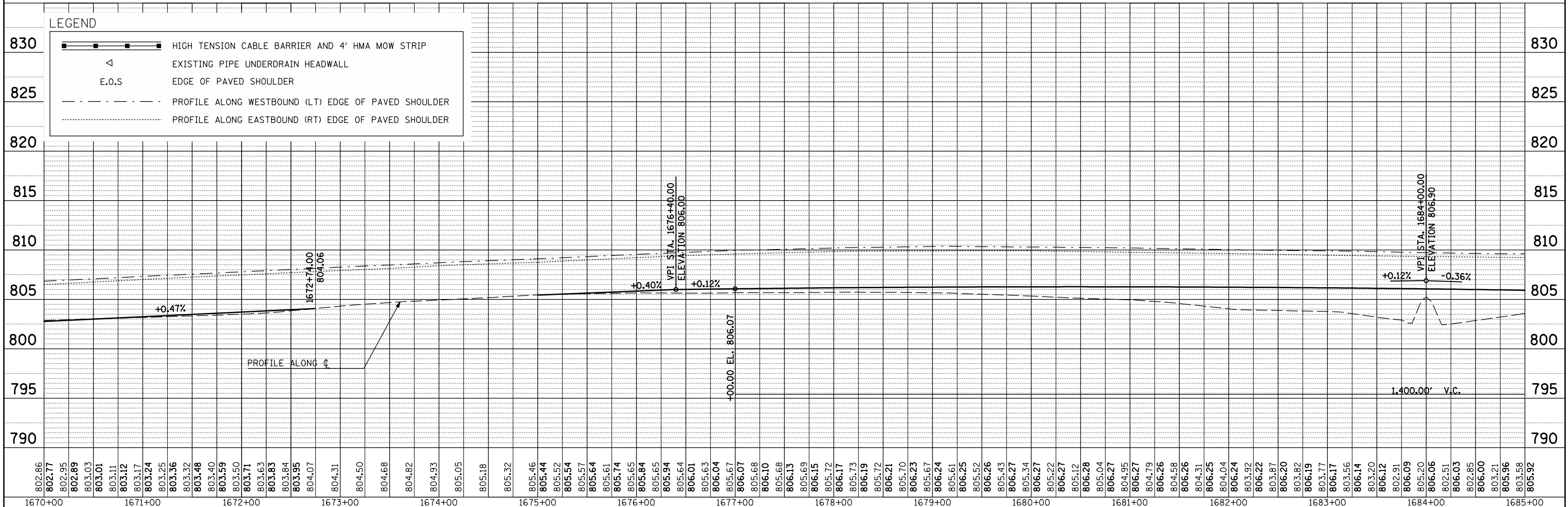


PR. FLUSH INLET BOX STD. 542546  
STA. 1684+00.00 - 2 EACH

STA. 1684+00  
INLET BOX  
DBL. 30" RCCP (0.78%)  
INV. 801.94 AT  
DBL. 30" RCCP (0.75%)  
INV. 802.02 AT  
DBL. 30" RCCP (0.75%)  
INV. 802.02 AT

MEDIAN INLET BOX REMOVAL - 2 EACH  
PIPE CULVERT, CL A, TY1, 24" - 12 FOOT  
PIPE CULVERT, CL A, TY1, 30" - 16 FOOT  
30" PIPE TEE WITH 24" RISER  
CONCRETE COLLAR - 2.28 CU YD

PROFILE	SURVEYED	BY	DATE
NOTE BOOK NO.	PLOTTED		
	CHECKED		
	STRUCTURE		
	NOTATIS CHRD		



FILE NAME =	USER NAME = keyarb	DESIGNED -	REVISED -
ct:\pwork\pwork\keysarb\d0261049\0570927	shht-plnprf_50.dgn	DRAWN -	REVISED -
	PLOT SCALE = 100.0000' / IN.	CHECKED -	REVISED -
	PLOT DATE = 3/25/2011	DATE -	REVISED -

STATE OF ILLINOIS  
DEPARTMENT OF TRANSPORTATION

PLAN AND PROFILE

SCALE: SHEET NO. OF SHEETS STA. TO STA.

F.A.I. RTE.	SECTION	COUNTY	TOTAL SHEETS	SHEET NO.
74	FY11 HSIP-5	MCLEAN	101	17
CONTRACT NO. 70927				
ILLINOIS FED. AID PROJECT				