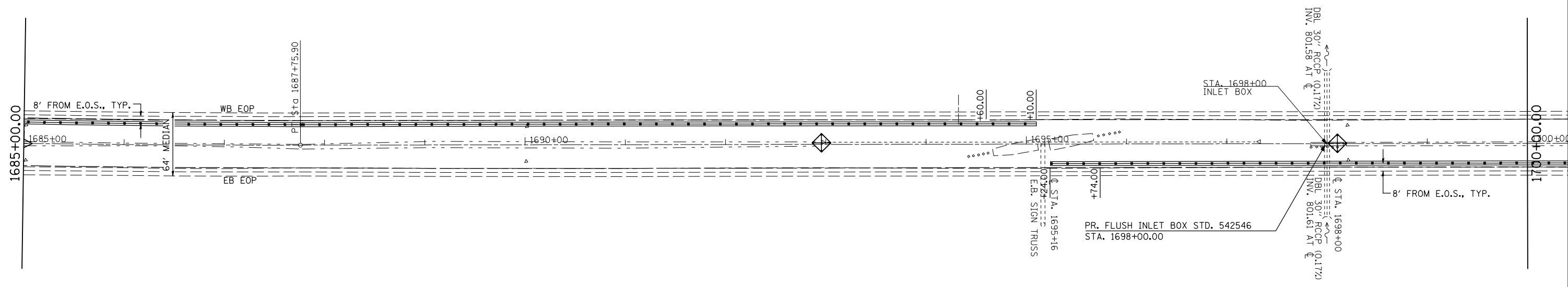
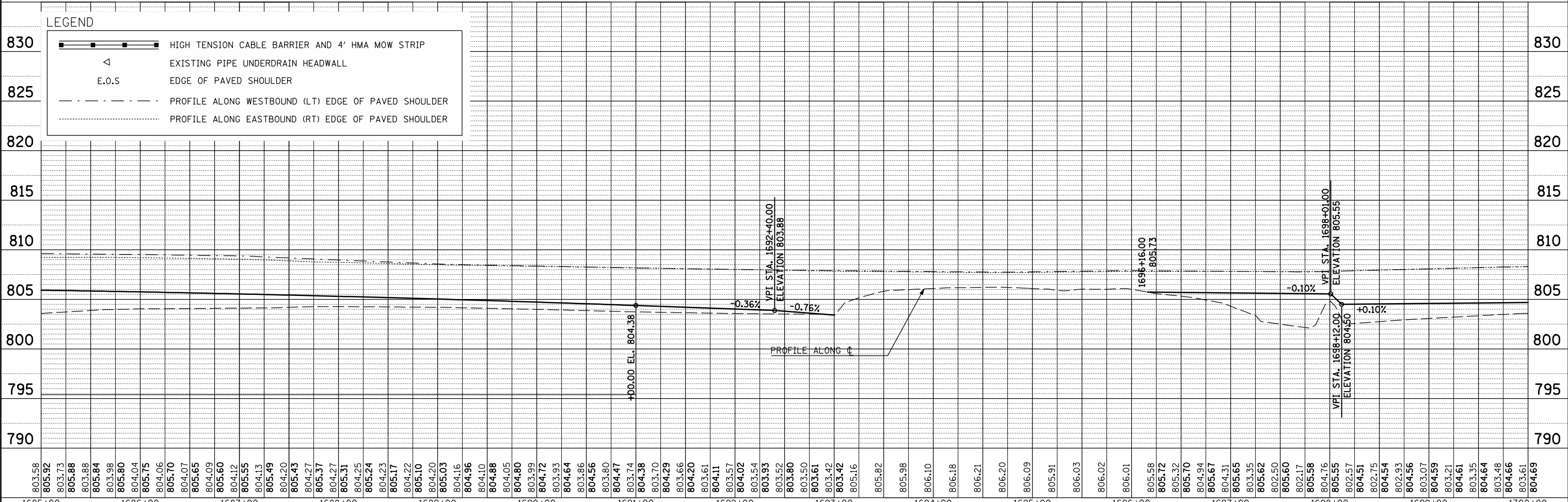


PLAN	SURVEYED	BY	DATE
	PLOTTED		
	ALIGNED		
	CHECKED		
	CAD FILE NAME		
NOTE BOOK NO.			



MEDIAN INLET BOX REMOVAL - 2 EACH
 PIPE CULVERT, CL A, TY1, 24" - 6 FOOT
 PIPE CULVERT, CL A, TY1, 30" - 16 FOOT
 30" PIPE TEE WITH 15" RISER - 1 EACH
 30" PIPE TEE WITH 24" RISER - 1 EACH
 CONCRETE COLLAR - 2.58 CU YD

PROFILE	SURVEYED	BY	DATE
	PLOTTED		
	GRADES CHECKED		
	STRUCTURE NOTATIONS CHKD		
NOTE BOOK NO.			



LEGEND

	HIGH TENSION CABLE BARRIER AND 4' HMA MOW STRIP
	EXISTING PIPE UNDERDRAIN HEADWALL
	E.O.S. EDGE OF PAVED SHOULDER
	PROFILE ALONG WESTBOUND (LT) EDGE OF PAVED SHOULDER
	PROFILE ALONG EASTBOUND (RT) EDGE OF PAVED SHOULDER

FILE NAME =	USER NAME =	DESIGNED -	REVISED -	<p align="center">STATE OF ILLINOIS DEPARTMENT OF TRANSPORTATION</p>	<p align="center">PLAN AND PROFILE</p>	F.A.I. RTE.	SECTION	COUNTY	TOTAL SHEETS	SHEET NO.
ct:\pwork\pwidot\keysrb\d0261049\0570927	shht-plnprf_50.dgn	DRAWN -	REVISED -			74	FY11 HSIP-5	MCLEAN	101	18
PLOT SCALE = 100.0000' / IN.	CHECKED -	REVISED -	REVISED -			CONTRACT NO. 70927				
PLOT DATE = 3/25/2011	DATE -	REVISED -	REVISED -			ILLINOIS FED. AID PROJECT				

SCALE: SHEET NO. OF SHEETS STA. TO STA.