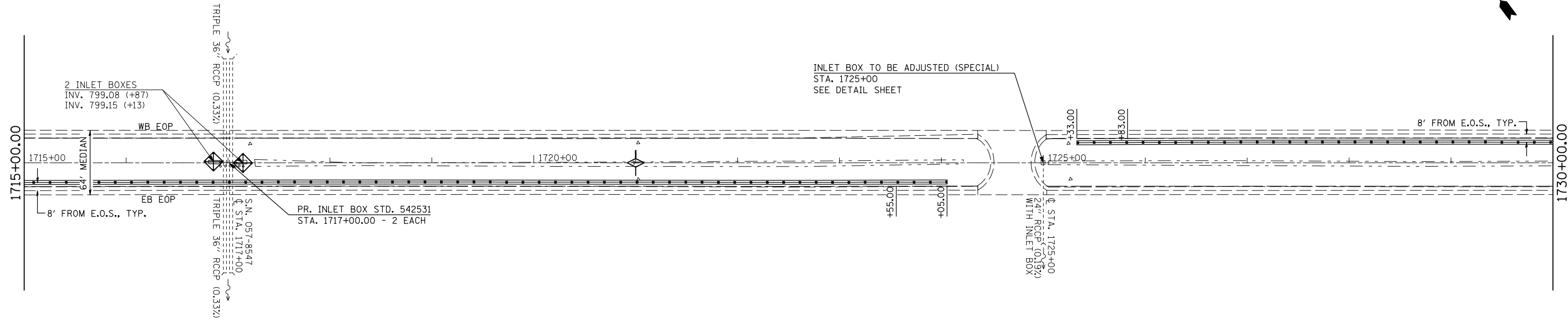
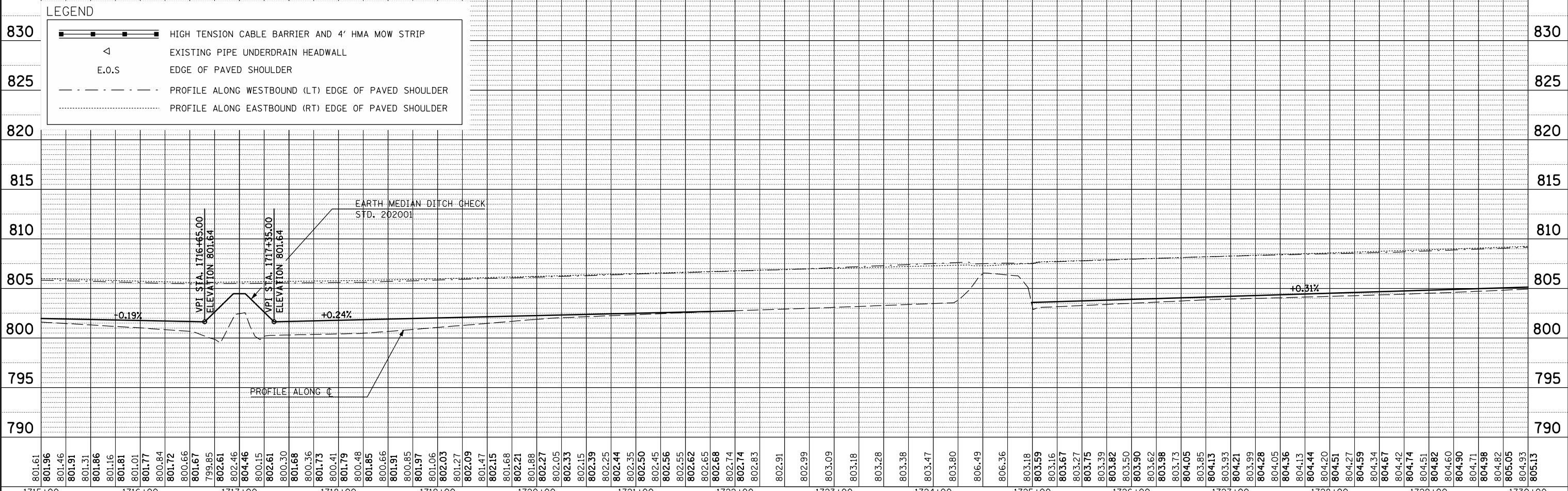


PLAN	SURVEYED	BY	DATE
	PLOTTED		
	CHECKED		
	DATE		
	FILE NAME		



MEDIAN INLET BOX REMOVAL - 2 EACH
 PIPE CULVERT, CL A, TY1, 24" - 12 FOOT
 PIPE CULVERT, CL A, TY1, 36" - 16 FOOT
 36" PIPE TEE WITH 24" RISER - 2 EACH
 CONCRETE COLLAR - 4.14 CU YD

PROFILE	SURVEYED	BY	DATE
	PLOTTED		
	CHECKED		
	DATE		
	FILE NAME		



FILE NAME =	USER NAME = keysrb	DESIGNED -	REVISED -
ct:\pwork\pwidot\keysrb\d0261049\0570927	shht-plnprf_50.dgn	DRAWN -	REVISED -
	PLOT SCALE = 100.0000' / IN.	CHECKED -	REVISED -
	PLOT DATE = 3/25/2011	DATE -	REVISED -

**STATE OF ILLINOIS
DEPARTMENT OF TRANSPORTATION**

PLAN AND PROFILE

SCALE:	SHEET NO.	OF	SHEETS	STA.	TO STA.
	74				

F.A.I. RTE.	SECTION	COUNTY	TOTAL SHEETS	SHEET NO.
74	FY11 HSIP-5	MCLEAN	101	20
CONTRACT NO. 70927				
ILLINOIS FED. AID PROJECT				