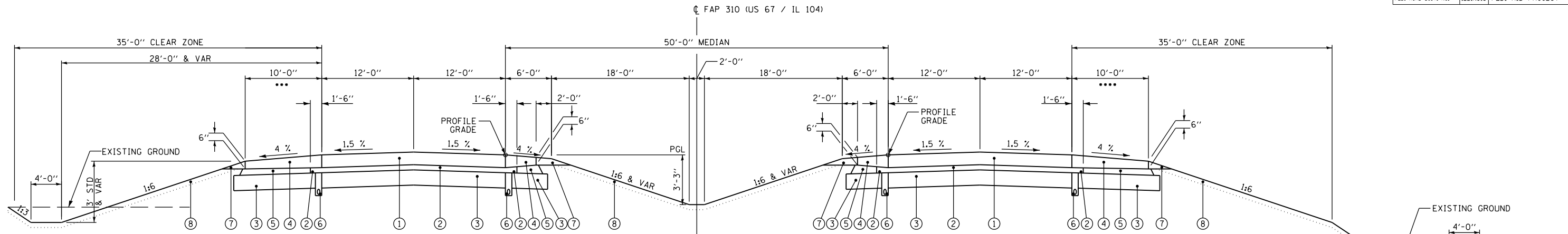


F.A.P. RTE.	SECTION	COUNTY	TOTAL SHEETS	SHEET NO.
310	69-3(3HB)	MORGAN	793	63
STA.		TO STA.		
FED. ROAD DIST. NO.	ILLINOIS	FED. AID PROJECT		

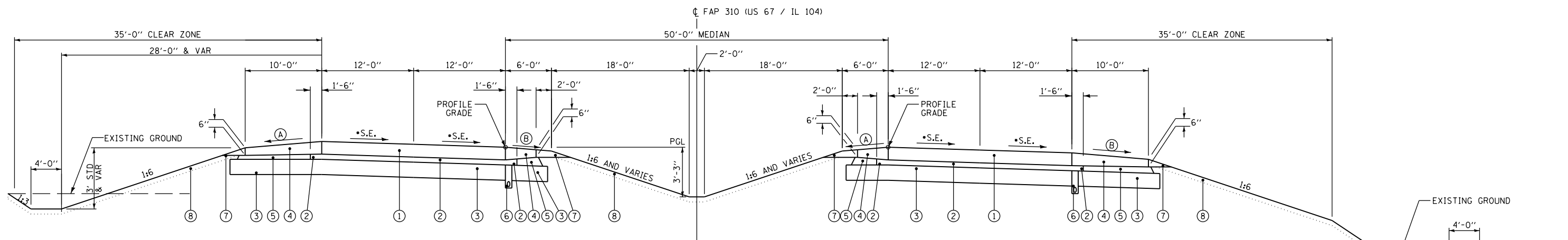
3:57:31 PM  
Mar-25-2011 03:57:31 PM  
\$FILE\$



**TYPICAL SECTION (FAP 310)**

STA 800+00.00 TO STA 892+24.00  
 STA 913+91.00 TO STA 925+31.00  
 STA 948+49.00 TO STA 968+87.00  
 STA 989+85.00 TO STA 1021+20.00  
 STA 1041+00.00 TO STA 1088+44.00  
 STA 1120+42.00 TO STA 1133+50.00  
 STA 1133+50.00 TO STA 1140+00.00  
 EASTBOUND ONLY

\*\*\* RAMP D STA. 820+36.49 TO STA. 826+96.51  
 (SEE STD 420301)  
 \*\*\* RAMP C STA. 817+49.93 TO STA. 830+32.62  
 (SEE STD 420201)

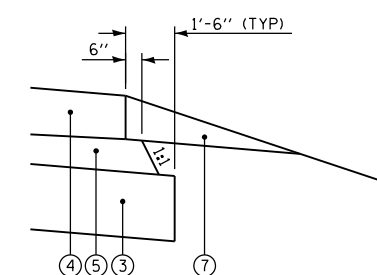


**TYPICAL SUPERELEVATED SECTION (FAP 310)**

STA 892+24.00 TO STA 894+09.00 S.E. TRANSITION  
 STA 894+09.00 TO STA 912+06.00 S.E. = 3.1% (LT)  
 STA 912+06.00 TO STA 913+91.00 S.E. TRANSITION  
 STA 925+31.00 TO STA 928+13.00 S.E. TRANSITION  
 STA 928+13.00 TO STA 945+67.00 S.E. = 5.4% (RT)  
 STA 945+67.00 TO STA 948+49.00 S.E. TRANSITION  
 STA 968+87.00 TO STA 970+23.00 S.E. TRANSITION  
 STA 970+23.00 TO STA 988+49.00 S.E. = 1.5% (RT)  
 STA 988+49.00 TO STA 989+85.00 S.E. TRANSITION  
 STA 1021+20.00 TO STA 1023+13.00 S.E. TRANSITION  
 STA 1023+13.00 TO STA 1039+07.00 S.E. = 3.3% (LT)  
 STA 1039+07.00 TO STA 1041+00.00 S.E. TRANSITION  
 STA 1088+44.00 TO STA 1090+06.00 S.E. TRANSITION  
 STA 1090+06.00 TO STA 1118+80.00 S.E. = 2.5% (LT)  
 STA 1118+80.00 TO STA 1120+42.00 S.E. TRANSITION

**PROPOSED LEGEND**

- ① PORTLAND CEMENT CONCRETE PAVEMENT 10" (JOINTED) - STD 420101
  - ② STABILIZED SUB-BASE 4"
  - ③ LIME MODIFIED SOIL 12"
  - ④ PORTLAND CEMENT CONCRETE SHOULDERS 10" - STD 483001 WITH RUMBLE STRIPS - STD 642001
  - ⑤ SUB-BASE GRANULAR MATERIAL, TYPE C
  - ⑥ PIPE UNDERDRAINS 6" - STD 601001
  - ⑦ AGGREGATE SHOULDERS, TYPE B
  - ⑧ TOPSOIL FURNISH AND PLACE, 4"
- (A) SHOULDER SLOPE - HIGH SIDE OF S.E.: WHEN THE S.E. RATE OF THE PAVEMENT IS BETWEEN 0 AND 4% THE SHOULDER SHALL BE SLOPED AT 4%. WHEN S.E. RATE OF THE PAVEMENT EXCEEDS 4% THE SHOULDER SHALL BE SLOPED SO THAT THE ALGEBRAIC DIFFERENCE BETWEEN THE PAVEMENT AND THE SHOULDER SHALL BE 8%.
- (B) SHOULDER SLOPE - LOW SIDE OF S.E.: SLOPE SHALL BE THE SAME AS THE S.E. BUT NOT LESS THAN 4%.



**LIMITS OF LIME STABILIZATION**  
 PCC SHOULDERS ADJACENT TO NEW PAVEMENT

REVISIONS	
NAME	DATE

NOTE: NOT TO SCALE

ILLINOIS DEPARTMENT OF TRANSPORTATION  
 TYPICAL SECTIONS  
 FAP 310 (US 67/IL 104)  
 SHEET 5 OF 24

DATE 4/2009  
 DRAWN BY SEB  
 CHECKED BY