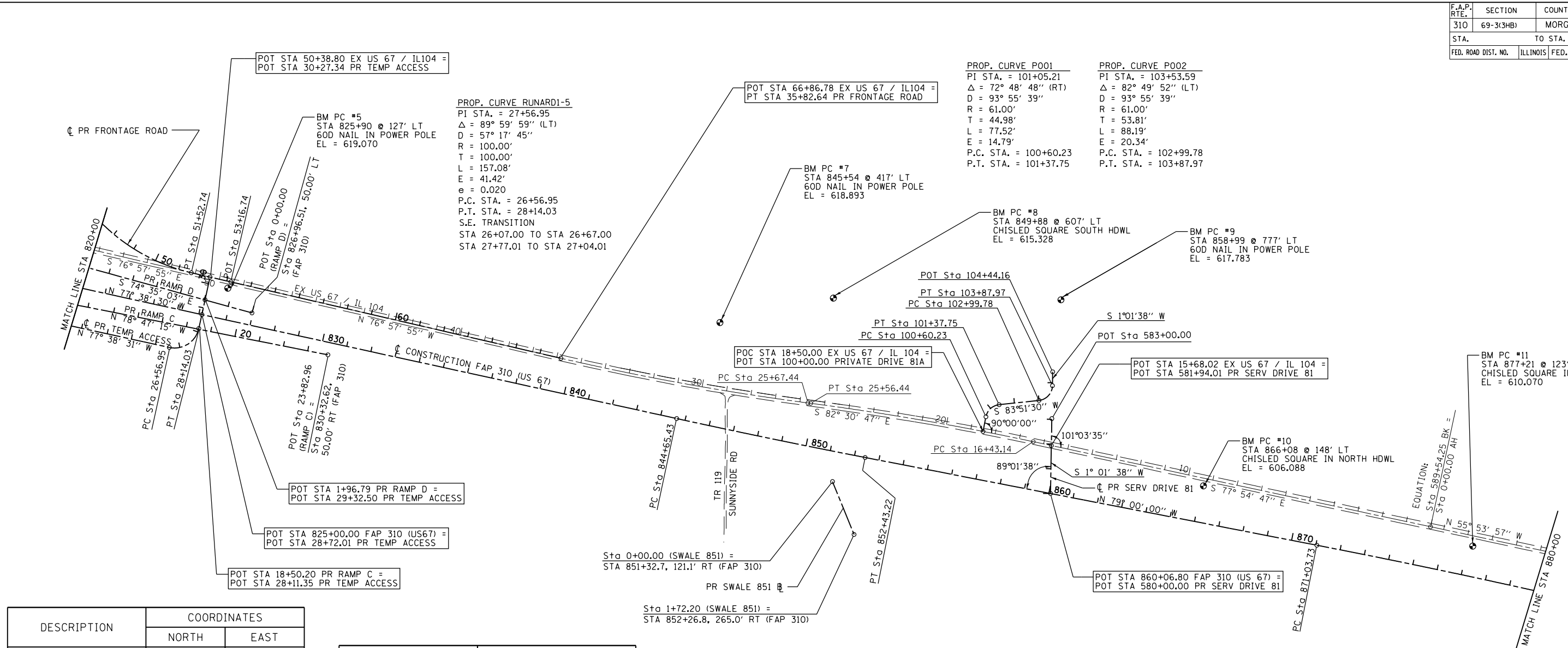


| F.A.P. RTE. | SECTION | COUNTY | TOTAL SHEETS | SHEET NO. |
|---------------------|-----------|------------------|--------------|-----------|
| 310 | 69-3(3HB) | MORGAN | 793 | 91 |
| STA. | | TO STA. | | |
| FED. ROAD DIST. NO. | ILLINOIS | FED. AID PROJECT | | |

3:58:13 PM

\$ FILE \$



| DESCRIPTION | COORDINATES | |
|------------------|---------------|---------------|
| | NORTH | EAST |
| PR FRONTAGE ROAD | | |
| PI 47+76.43 | 1,129,386.270 | 2,237,783.505 |
| PT 51+52.74 | 1,129,495.169 | 2,237,313.108 |
| POT 53+16.74 | 1,129,532.157 | 2,237,153.334 |
| PR TEMP ACCESS | | |
| PC 26+56.95 | 1,129,797.384 | 2,237,401.975 |
| PI 27+56.95 | 1,129,818.786 | 2,237,304.292 |
| POT 28+11.35 | 1,129,723.712 | 2,237,283.498 |
| PT 28+14.03 | 1,129,721.103 | 2,237,282.890 |
| POT 28+72.01 | 1,129,664.470 | 2,237,270.482 |
| POT 29+32.50 | 1,129,605.377 | 2,237,257.534 |
| POT 30+27.34 | 1,129,512.733 | 2,237,237.236 |
| FAP 310 | | |
| PC 844+65.43 | 1,130,085.120 | 2,235,350.598 |
| POT 825+00.00 | 1,129,664.470 | 2,237,270.482 |
| PI 848+54.34 | 1,130,168.358 | 2,234,970.693 |
| PT 852+43.22 | 1,130,242.567 | 2,234,588.921 |
| POT 860+06.80 | 1,130,388.265 | 2,233,839.374 |
| PC 871+03.73 | 1,130,597.569 | 2,232,762.597 |
| PR RAMP C | | |
| POT 18+50.20 | 1,129,723.712 | 2,237,283.498 |
| POT 23+82.96 | 1,129,827.307 | 2,236,760.904 |
| PR RAMP D | | |
| POT 0+00.00 | 1,129,657.688 | 2,237,067.824 |
| POT 1+96.79 | 1,129,605.377 | 2,237,257.534 |

| DESCRIPTION | COORDINATES | |
|--------------|---------------|---------------|
| | NORTH | EAST |
| EX US 67/104 | | |
| POT 15+69.02 | 1,130,194.288 | 2,233,835.896 |
| PC 16+43.14 | 1,130,178.560 | 2,233,909.343 |
| PI 21+00.03 | 1,130,082.888 | 2,234,356.110 |
| PT 25+56.44 | 1,130,023.355 | 2,234,809.110 |
| PC 25+67.44 | 1,130,021.921 | 2,234,820.017 |
| PI 30+75.44 | 1,129,955.729 | 2,235,323.683 |
| PT 35+82.64 | 1,129,841.156 | 2,235,818.591 |
| POT 50+38.80 | 1,129,512.733 | 2,237,237.236 |
| POT 66+86.78 | 1,129,841.156 | 2,235,818.591 |

| DESCRIPTION | COORDINATES | |
|-------------------|---------------|---------------|
| | NORTH | EAST |
| PRIVATE DRIVE 81A | | |
| POT 100+00.00 | 1,130,137.085 | 2,234,112.003 |
| PC 100+60.23 | 1,130,077.975 | 2,234,100.464 |
| PI 101+05.21 | 1,130,033.825 | 2,234,091.846 |
| PT 101+37.75 | 1,130,029.012 | 2,234,047.121 |
| PC 102+99.78 | 1,130,011.676 | 2,233,886.018 |
| PI 103+53.59 | 1,130,005.920 | 2,233,832.519 |
| PT 103+87.97 | 1,129,952.120 | 2,233,831.554 |
| POT 104+44.16 | 1,129,895.933 | 2,233,830.546 |

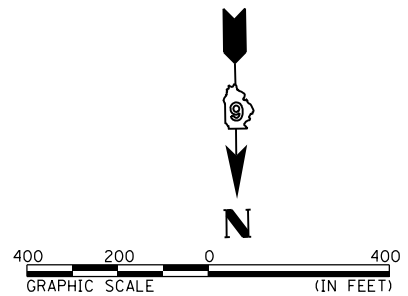
EXIST. CURVE 304
 PI STA. = 21+00.03
 $\Delta = 4^\circ 36' 00''$ (LT)
 D = $0^\circ 30' 13''$
 R = 11,375.65'
 T = 456.90'
 L = 913.30'
 E = 9.17'
 P.C. STA. = 16+43.14
 P.T. STA. = 25+56.44

EXIST. CURVE 305
 PI STA. = 30+75.44
 $\Delta = 5^\circ 32' 52''$ (RT)
 D = $0^\circ 32' 47''$
 R = 10,484.88'
 T = 508.00'
 L = 1,015.20'
 E = 12.30'
 P.C. STA. = 25+67.44
 P.T. STA. = 35+82.64

PROP. CURVE MLE14R2
 PI STA. = 848+54.34
 $\Delta = 1^\circ 21' 30''$ (LT)
 D = $0^\circ 10' 29''$
 R = 32,808.33'
 T = 388.92'
 L = 777.80'
 E = 2.31'
 P.C. STA. = 844+65.43
 P.T. STA. = 852+43.22

PROP. CURVE CONFR-4
 PI STA. = 47+76.42
 $\Delta = 65^\circ 11' 58''$ (LT)
 D = $7^\circ 35' 20''$
 R = 755.00'
 T = 482.84'
 L = 859.15'
 E = 141.19'
 e = 0.080
 P.C. STA. = 42+93.59
 P.T. STA. = 51+52.74
 S.E. TRANSITION
 STA 41+63.00 TO STA 43+41.00
 STA 50+93.00 TO STA 53+05.00

PROP. CURVE MLE15AR2
 PI STA. = 876+76.40
 $\Delta = 2^\circ 00' 00''$ (RT)
 D = $0^\circ 10' 29''$
 R = 32,808.32'
 T = 572.67'
 L = 1,145.22'
 E = 5.00'
 e = NC
 P.C. STA. = 871+03.73
 P.T. STA. = 882+48.95



| REVISIONS | |
|-----------|------|
| NAME | DATE |
| | |
| | |
| | |
| | |
| | |

ILLINOIS DEPARTMENT OF TRANSPORTATION
 ALIGNMENT & BENCHMARK DATA
 SHEET 3 OF 9
 FAP 310 (US 67/IL 104)

DATE _____
 DRAWN BY Lin
 CHECKED BY _____