

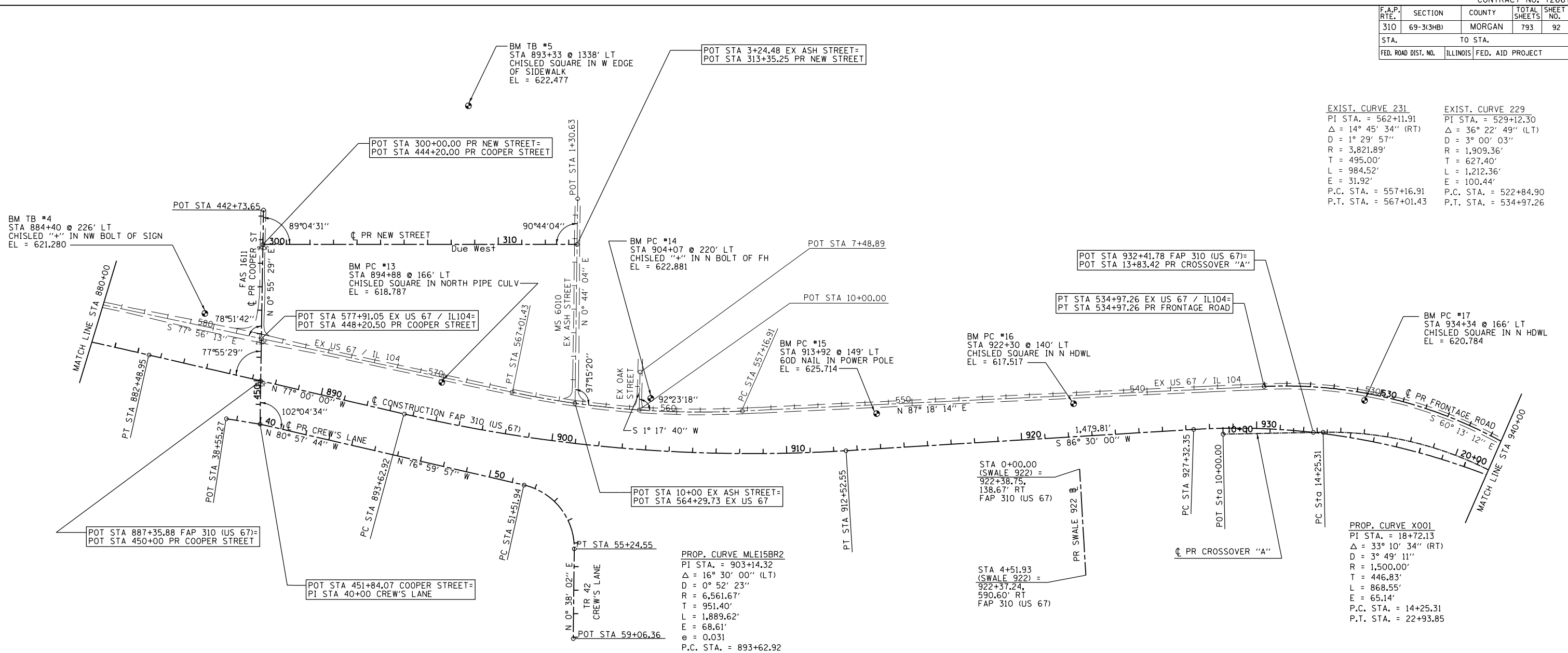
F.A.P. RTE.	SECTION	COUNTY	TOTAL SHEETS	SHEET NO.
310	69-3(3HB)	MORGAN	793	92
STA.		TO STA.		
FED. ROAD DIST. NO.		ILLINOIS	FED. AID PROJECT	

EXIST. CURVE 231 PI STA. = 562+11.91 Δ = 14° 45' 34" (RT) D = 1° 29' 57" R = 3,821.89' T = 495.00' L = 984.52' E = 31.92' P.C. STA. = 557+16.91 P.T. STA. = 567+01.43	EXIST. CURVE 229 PI STA. = 529+12.30 Δ = 36° 22' 49" (LT) D = 3° 00' 03" R = 1,909.36' T = 627.40' L = 1,212.36' E = 100.44' P.C. STA. = 522+84.90 P.T. STA. = 534+97.26
---	--

3:58:19 PM

Mar-25-2011 03:58:19PM

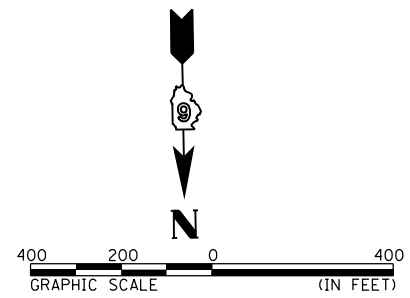
\$ FILE \$



DESCRIPTION	COORDINATES	
	NORTH	EAST
FAP 310		
PT 882+48.95	1,130,835.662	2,231,642.458
POT 887+35.88	1,130,945.196	2,231,168.014
PC 893+62.92	1,131,086.250	2,230,557.039
PI 903+14.32	1,131,300.268	2,229,630.027
PT 912+52.55	1,131,242.187	2,228,680.406
PC 927+32.35	1,131,151.847	2,227,203.360
POT 932+41.78	1,131,164.655	2,226,694.730
PI 937+25.11	1,131,091.240	2,226,212.458
PR CREW'S LANE		
POT 38+55.27	1,131,106.507	2,231,313.917
POT 40+00.00	1,131,129.242	2,231,170.985
PC 51+51.94	1,131,388.386	2,230,048.573
PI 53+73.18	1,131,438.156	2,229,833.007
PT 55+24.55	1,131,659.379	2,229,835.454
POT 59+06.36	1,132,041.159	2,229,839.678
PR CROSSOVER A		
POT 10+00.00	1,131,171.856	2,227,078.086
PC 14+25.31	1,131,163.868	2,226,652.855
PI 18+72.13	1,131,155.476	2,226,206.106
PT 22+93.85	1,131,392.919	2,225,827.588

DESCRIPTION	COORDINATES	
	NORTH	EAST
PR COOPER ST		
POT 442+73.65	1,130,218.942	2,231,156.292
POT 444+20.00	1,130,365.271	2,231,158.654
POT 448+20.50	1,130,765.724	2,231,165.118
POT 450+00.00	1,130,945.196	2,231,168.014
POT 451+84.07	1,131,129.242	2,231,170.985
PR NEW STREET		
POT 300+00.00	1,130,365.271	2,231,158.654
POT 313+35.25	1,130,365.271	2,229,823.401
PR FRONTAGE ROAD		
POT 524+14.95	1,131,219.257	2,225,865.662
PT 534+97.26	1,130,969.195	2,226,903.844
PI 529+71.12	1,130,943.036	2,226,348.387

DESCRIPTION	COORDINATES	
	NORTH	EAST
EX US 67/IL 104		
PI 529+12.30	1,130,939.681	2,226,277.138
PT 534+97.26	1,130,969.195	2,226,903.844
PC 557+16.91	1,131,073.608	2,229,121.037
POT 577+91.05	1,130,765.724	2,231,165.118
PI 562+11.91	1,131,096.894	2,229,615.490
POT 564+29.73	1,131,040.739	2,229,832.060
POT 561+55.70	1,131,069.071	2,229,559.567
PT 567+01.43	1,130,993.443	2,230,099.559
EX OAK STREET		
POT 8+38.97	1,130,908.077	2,229,555.929
POT 10+00.00	1,131,069.071	2,229,559.567
EX ASH STREET		
POT 1+30.63	1,130,171.442	2,229,820.916
POT 3+24.48	1,130,365.271	2,229,823.401
POT 10+00.00	1,131,040.739	2,229,832.060



PROP. CURVE 709
PI STA. = 529+71.12
Δ = 32° 28' 29" (LT)
D = 3° 00' 03"
R = 1,909.36'
T = 556.07'
L = 1,082.21'
E = 79.33'
e = 0.062 (MATCH EX)
P.C. STA. = 524+15.05
P.T. STA. = 534+97.26
S.E. TRANSITION
STA 522+70.00 TO STA 524+68.00

PROP. CURVE C141
PI STA. = 53+73.18
Δ = 77° 37' 59" (RT)
D = 20° 50' 05"
R = 2,750.00'
T = 221.24'
L = 372.61'
E = 77.95'
e = 0.054
P.C. STA. = 51+51.94
P.T. STA. = 55+24.55
S.E. TRANSITION
STA 50+24.00 TO STA 51+95.00
STA 54+82.00 TO STA 56+53.00

PROP. CURVE MLE16R2
PI STA. = 937+25.11
D = 1° 56' 26"
Δ = 37° 10' 00" (RT)
R = 2,952.75'
T = 992.75'
L = 1,915.39'
E = 162.42'
e = 0.054
P.C. STA. = 927+32.35
P.T. STA. = 946+47.74
S.E. TRANSITION
STA 925+31.00 TO STA 928+13.00
STA 945+67.00 TO STA 948+49.00

REVISIONS	
NAME	DATE

ILLINOIS DEPARTMENT OF TRANSPORTATION
ALIGNMENT & BENCHMARK DATA
SHEET 4 OF 9
FAP 310 (US 67/IL 104)

DATE _____ DRAWN BY Lin
CHECKED BY _____