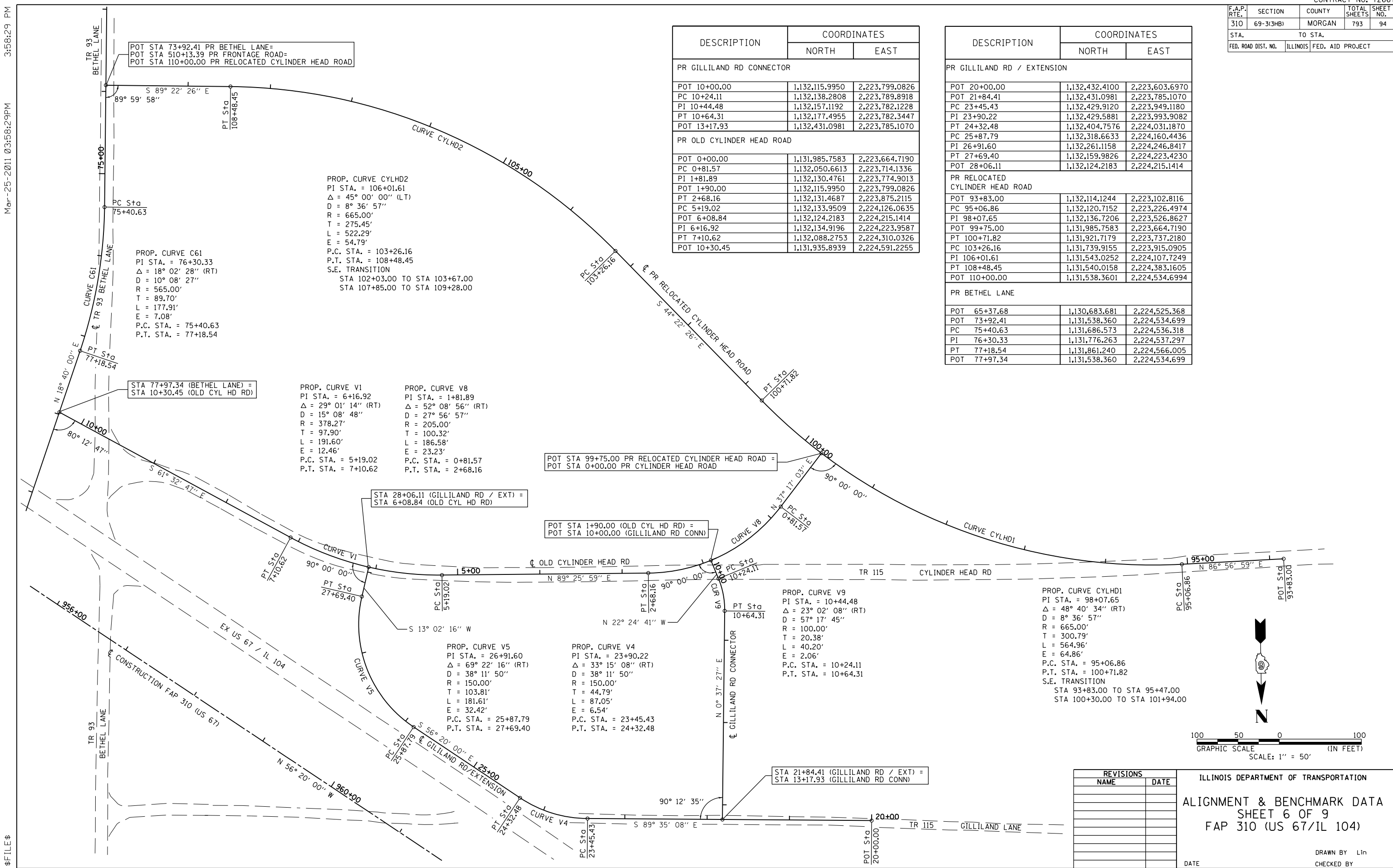


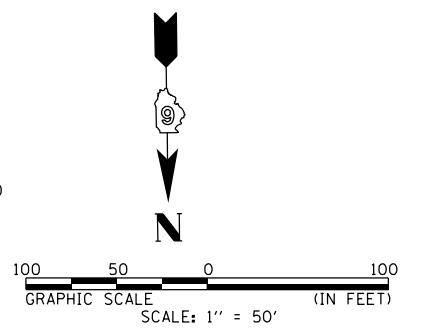
F.A.P. RTE.	SECTION	COUNTY	TOTAL SHEETS	SHEET NO.
310	69-3(3HB)	MORGAN	793	94
STA.		TO STA.		
FED. ROAD DIST. NO.		ILLINOIS	FED. AID PROJECT	

DESCRIPTION	COORDINATES	
	NORTH	EAST
PR GILLILAND RD CONNECTOR		
POT 10+00.00	1,132,115.9950	2,223,799.0826
PC 10+24.11	1,132,138.2808	2,223,789.8918
PI 10+44.48	1,132,157.1192	2,223,782.1228
PT 10+64.31	1,132,177.4955	2,223,782.3447
POT 13+17.93	1,132,431.0981	2,223,785.1070
PR OLD CYLINDER HEAD ROAD		
POT 0+00.00	1,131,985.7583	2,223,664.7190
PC 0+81.57	1,132,050.6613	2,223,714.1336
PI 1+81.89	1,132,130.4761	2,223,774.9013
POT 1+90.00	1,132,115.9950	2,223,799.0826
PT 2+68.16	1,132,131.4687	2,223,875.2115
PC 5+19.02	1,132,133.9509	2,224,126.0635
POT 6+08.84	1,132,124.2183	2,224,215.1414
PI 6+16.92	1,132,134.9196	2,224,223.9587
PT 7+10.62	1,132,088.2753	2,224,310.0326
POT 10+30.45	1,131,935.8939	2,224,591.2255

DESCRIPTION	COORDINATES	
	NORTH	EAST
PR GILLILAND RD / EXTENSION		
POT 20+00.00	1,132,432.4100	2,223,603.6970
POT 21+84.41	1,132,431.0981	2,223,785.1070
PC 23+45.43	1,132,429.9120	2,223,949.1180
PI 23+90.22	1,132,429.5881	2,223,993.9082
PT 24+32.48	1,132,404.7576	2,224,031.1870
PC 25+87.79	1,132,318.6633	2,224,160.4436
PI 26+91.60	1,132,261.1158	2,224,246.8417
PT 27+69.40	1,132,159.9826	2,224,223.4230
POT 28+06.11	1,132,124.2183	2,224,215.1414
PR RELOCATED CYLINDER HEAD ROAD		
POT 93+83.00	1,132,114.1244	2,223,102.8116
PC 95+06.86	1,132,120.7152	2,223,226.4974
PI 98+07.65	1,132,136.7206	2,223,526.8627
POT 99+75.00	1,131,985.7583	2,223,664.7190
PT 100+71.82	1,131,921.7179	2,223,737.2180
PC 103+26.16	1,131,739.9155	2,223,915.0905
PI 106+01.61	1,131,543.0252	2,224,107.7249
PT 108+48.45	1,131,540.0158	2,224,383.1605
POT 110+00.00	1,131,538.3601	2,224,534.6994
PR BETHEL LANE		
POT 65+37.68	1,130,683.681	2,224,525.368
POT 73+92.41	1,131,538.360	2,224,534.699
PC 75+40.63	1,131,686.573	2,224,536.318
PI 76+30.33	1,131,776.263	2,224,537.297
PT 77+18.54	1,131,861.240	2,224,566.005
POT 77+97.34	1,131,538.360	2,224,534.699



3:58:29 PM  
 Mar-25-2011 03:58:29PM  
 \$FILE\$



REVISIONS	
NAME	DATE

ILLINOIS DEPARTMENT OF TRANSPORTATION  
**ALIGNMENT & BENCHMARK DATA**  
 SHEET 6 OF 9  
 FAP 310 (US 67/IL 104)  
 DATE \_\_\_\_\_  
 DRAWN BY Lin  
 CHECKED BY \_\_\_\_\_