

F.A.P. RTE.	SECTION	COUNTY	TOTAL SHEETS	SHEET NO.
310	69-3(3HB)	MORGAN	793	96
STA.		TO STA.		
FED. ROAD DIST. NO.	ILLINOIS	FED. AID PROJECT		

3:58:38 PM  
Mar-25-2011 03:58:38PM

**EXIST. CURVE 84**  
 PI STA. = 355+35.94  
 $\Delta = 24^\circ 16' 39''$  (RT)  
 $D = 1^\circ 39' 59''$   
 $R = 3,438.56'$   
 $T = 739.60'$   
 $L = 1,457.00'$   
 $E = 78.64'$   
 P.C. STA. = 347+96.34  
 P.T. STA. = 362+53.34

**PROP. CURVE MLE19**  
 PI STA. = 1104+58.92  
 $\Delta = 8^\circ 02' 26''$  (RT)  
 $D = 0^\circ 41' 55''$   
 $R = 8,202.08'$   
 $T = 1,490.57'$   
 $L = 2,948.96'$   
 $E = 134.34'$   
 $e = 0.025$   
 P.C. STA. = 1089+68.35  
 P.T. STA. = 1119+17.31  
 S.E. TRANSITION  
 STA 1088+44.00 TO STA 1090+06.00  
 STA 1118+80.00 TO STA 1120+42.00

**PROP. CURVE C11**  
 PI STA. = 204+20.00  
 $\Delta = 26^\circ 00' 00''$  (LT)  
 $D = 10^\circ 08' 27''$   
 $R = 565.00'$   
 $T = 130.44'$   
 $L = 256.39'$   
 $E = 14.86'$   
 $e = 0.04$   
 P.C. STA. = 202+89.56  
 P.T. STA. = 205+45.95  
 S.E. TRANSITION  
 STA 202+01.00 TO STA 203+15.00  
 STA 205+21.00 TO STA 206+35.00

**PROP. CURVE C12**  
 PI STA. = 208+59.28  
 $\Delta = 16^\circ 56' 39''$  (RT)  
 $D = 8^\circ 36' 57''$   
 $R = 665.00'$   
 $T = 99.05'$   
 $L = 196.66'$   
 $E = 7.34'$   
 $e = 0.06$   
 P.C. STA. = 207+60.22  
 P.T. STA. = 209+56.88  
 S.E. TRANSITION  
 STA 206+37.00 TO STA 208+01.00  
 STA 209+16.00 TO STA 210+80.00

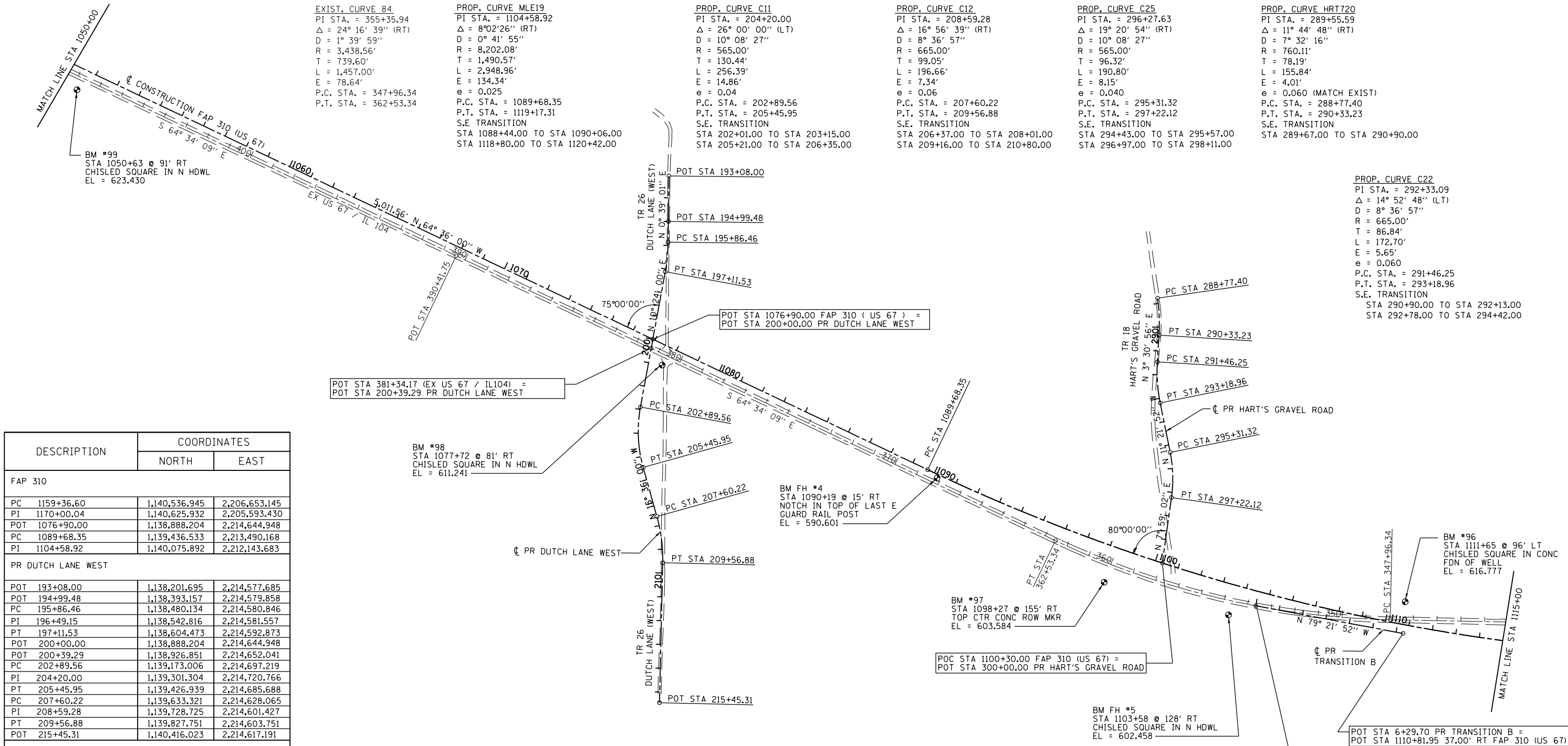
**PROP. CURVE C25**  
 PI STA. = 296+27.63  
 $\Delta = 19^\circ 20' 54''$  (RT)  
 $D = 10^\circ 08' 27''$   
 $R = 565.00'$   
 $T = 96.32'$   
 $L = 190.80'$   
 $E = 8.15'$   
 $e = 0.040$   
 P.C. STA. = 295+31.32  
 P.T. STA. = 297+22.12  
 S.E. TRANSITION  
 STA 294+43.00 TO STA 295+57.00  
 STA 296+97.00 TO STA 298+11.00

**PROP. CURVE HRT720**  
 PI STA. = 289+55.59  
 $\Delta = 11^\circ 44' 48''$  (RT)  
 $D = 7^\circ 32' 16''$   
 $R = 760.11'$   
 $T = 78.19'$   
 $L = 155.84'$   
 $E = 4.01'$   
 $e = 0.060$  (MATCH EXIST)  
 P.C. STA. = 288+77.40  
 P.T. STA. = 290+33.23  
 S.E. TRANSITION  
 STA 289+67.00 TO STA 290+90.00

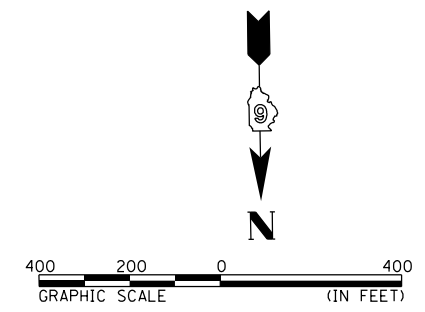
**PROP. CURVE C22**  
 PI STA. = 292+33.09  
 $\Delta = 14^\circ 52' 48''$  (LT)  
 $D = 8^\circ 36' 57''$   
 $R = 665.00'$   
 $T = 86.84'$   
 $L = 172.70'$   
 $E = 5.65'$   
 $e = 0.060$   
 P.C. STA. = 291+46.25  
 P.T. STA. = 293+18.96  
 S.E. TRANSITION  
 STA 290+90.00 TO STA 292+13.00  
 STA 292+78.00 TO STA 294+42.00

DESCRIPTION	COORDINATES	
	NORTH	EAST
<b>FAP 310</b>		
PC 1159+36.60	1,140,536.945	2,206,653.145
PI 1170+00.04	1,140,625.932	2,205,593.430
POT 1076+90.00	1,138,888.204	2,214,644.948
PC 1089+68.35	1,139,436.533	2,213,490.168
PI 1104+58.92	1,140,075.892	2,212,143.683
<b>PR DUTCH LANE WEST</b>		
POT 193+08.00	1,138,201.695	2,214,577.685
POT 194+99.48	1,138,393.157	2,214,579.858
PC 195+86.46	1,138,480.134	2,214,580.846
PI 196+49.15	1,138,542.816	2,214,581.557
PT 197+11.53	1,138,604.473	2,214,592.873
POT 200+00.00	1,138,888.204	2,214,644.948
POT 200+39.29	1,138,926.851	2,214,652.041
PC 202+89.56	1,139,173.006	2,214,697.219
PI 204+20.00	1,139,301.304	2,214,720.766
PT 205+45.95	1,139,426.939	2,214,685.688
PC 207+60.22	1,139,633.321	2,214,628.065
PI 208+59.28	1,139,728.725	2,214,601.427
PT 209+56.88	1,139,827.751	2,214,603.751
POT 215+45.31	1,140,416.023	2,214,617.191
<b>PR HART'S GRAVEL ROAD</b>		
PC 288+77.40	1,138,715.410	2,212,524.474
PI 289+55.59	1,138,792.798	2,212,513.290
PT 290+33.23	1,138,870.842	2,212,518.096
PC 291+46.25	1,138,983.646	2,212,525.027
PI 292+33.09	1,139,070.324	2,212,530.352
PT 293+18.96	1,139,155.462	2,212,513.240
PC 295+31.32	1,139,363.662	2,212,471.393
PI 296+27.63	1,139,458.089	2,212,452.414
PT 297+22.12	1,139,553.470	2,212,465.792
POT 300+00.00	1,139,828.662	2,212,504.388
<b>PR TRANSITION B</b>		
POT 0+00.00	1,140,008.633	2,212,111.484
POT 6+29.70	1,140,124.850	2,211,492.605

DESCRIPTION	COORDINATES	
	NORTH	EAST
<b>EX US 67 / IL104</b>		
PC 347+96.34	1,140,067.006	2,211,546.076
POC 353+65.40	1,140,008.633	2,212,111.184
PI 355+35.94	1,140,052.120	2,212,285.526
PT 362+53.34	1,139,734.519	2,212,953.461
POT 381+34.17	1,138,926.851	2,214,652.041
POT 390+41.75	1,138,537.115	2,215,471.680



**PROP. CURVE C13**  
 PI STA. = 196+49.15  
 $\Delta = 9^\circ 44' 59''$  (RT)  
 $D = 7^\circ 47' 43''$   
 $R = 735.00'$   
 $T = 62.69'$   
 $L = 125.07'$   
 $E = 2.67'$   
 $e = 0.04$   
 P.C. STA. = 195+86.46  
 P.T. STA. = 197+11.53  
 S.E. TRANSITION  
 STA 194+91.00 TO STA 196+14.00  
 STA 196+84.00 TO STA 198+07.00



REVISIONS	
NAME	DATE

ILLINOIS DEPARTMENT OF TRANSPORTATION  
**ALIGNMENT & BENCHMARK DATA**  
 SHEET 8 OF 9  
 FAP 310 (US 67/IL 104)

DATE \_\_\_\_\_ DRAWN BY Lin  
 CHECKED BY \_\_\_\_\_