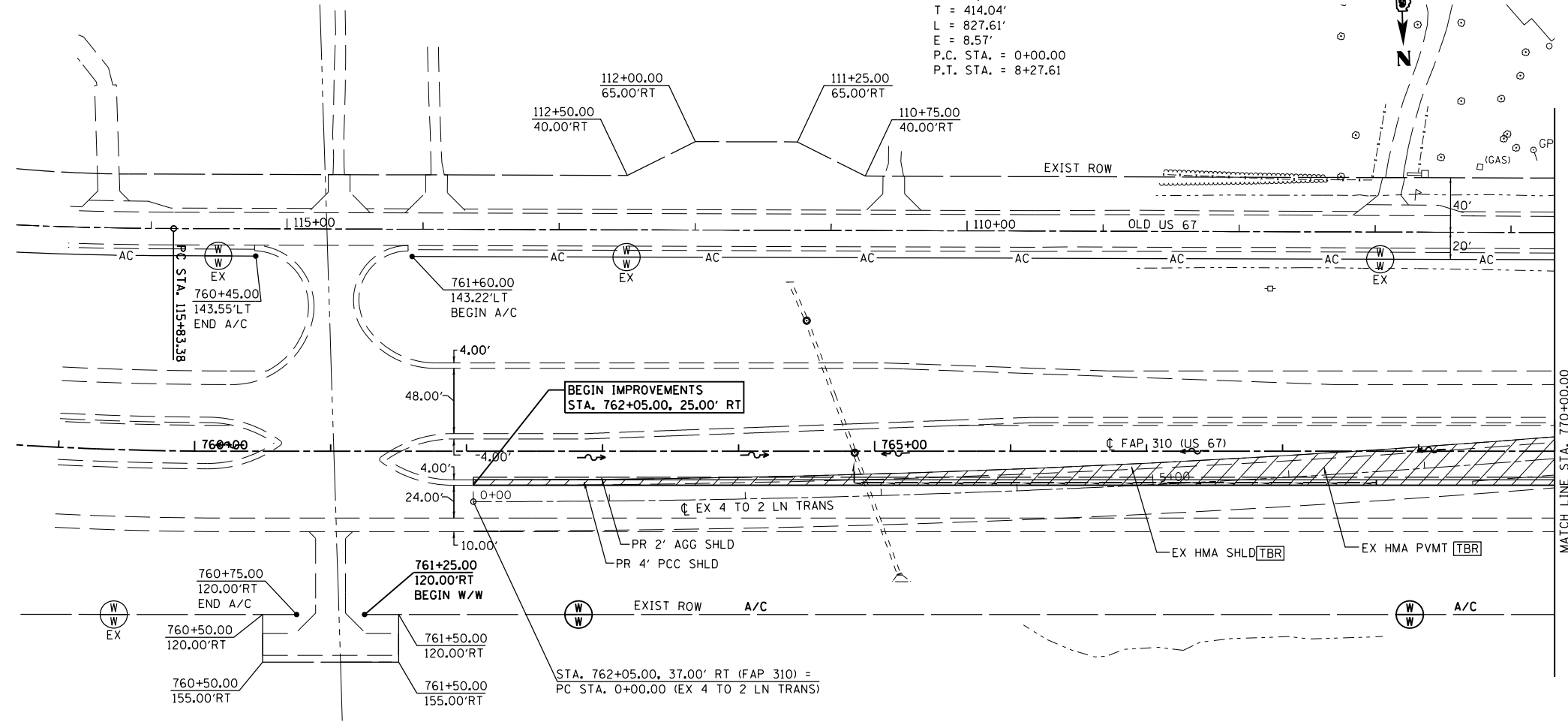


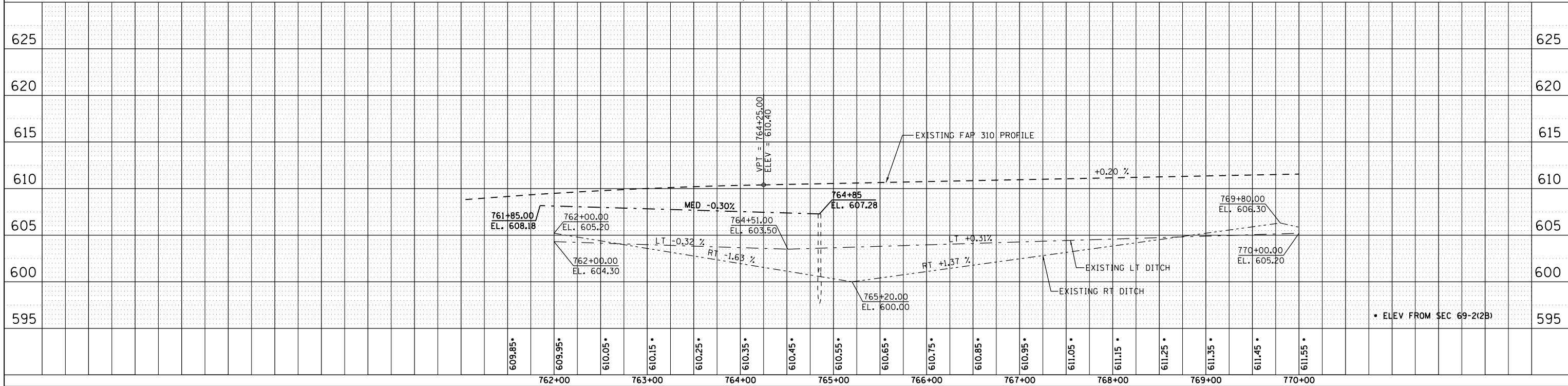
F.A.P. RTE.	SECTION	COUNTY	TOTAL SHEETS	SHEET NO.
310	69-3(3HB)	MORGAN	793	126
STA. 310		TO STA. 770+00.00		
FED. ROAD DIST. NO.		ILLINOIS FED. AID PROJECT		

SEC 7, T 15 N, R 11 W, 3rd PM

EXIST. CURVE TRANS001  
 PI STA. = 4+14.04  
 $\Delta = 4^\circ 44' 31''$  (LT)  
 $D = 0^\circ 34' 23''$   
 $R = 10,000.00'$   
 $T = 414.04'$   
 $L = 827.61'$   
 $E = 8.57'$   
 P.C. STA. = 0+00.00  
 P.T. STA. = 8+27.61



SEC 7, T 15 N, R 11 W, 3RD PM



SECTION 69-3(3HB)

MORGAN COUNTY

PLAN

SURVEYED	DATE
PLOTTED	
CHECKED	
BY	
NO. OF WAY CHECKED	
CADD FILE NAME	

PROFILE

SURVEYED	DATE
PLOTTED	
CHECKED	
BY	
NO. OF WAY CHECKED	
STRUCTURE NOTATIONS CHKD	

1:12:16 PM

11/29/2011 11:21:16 AM

\$FILE\$