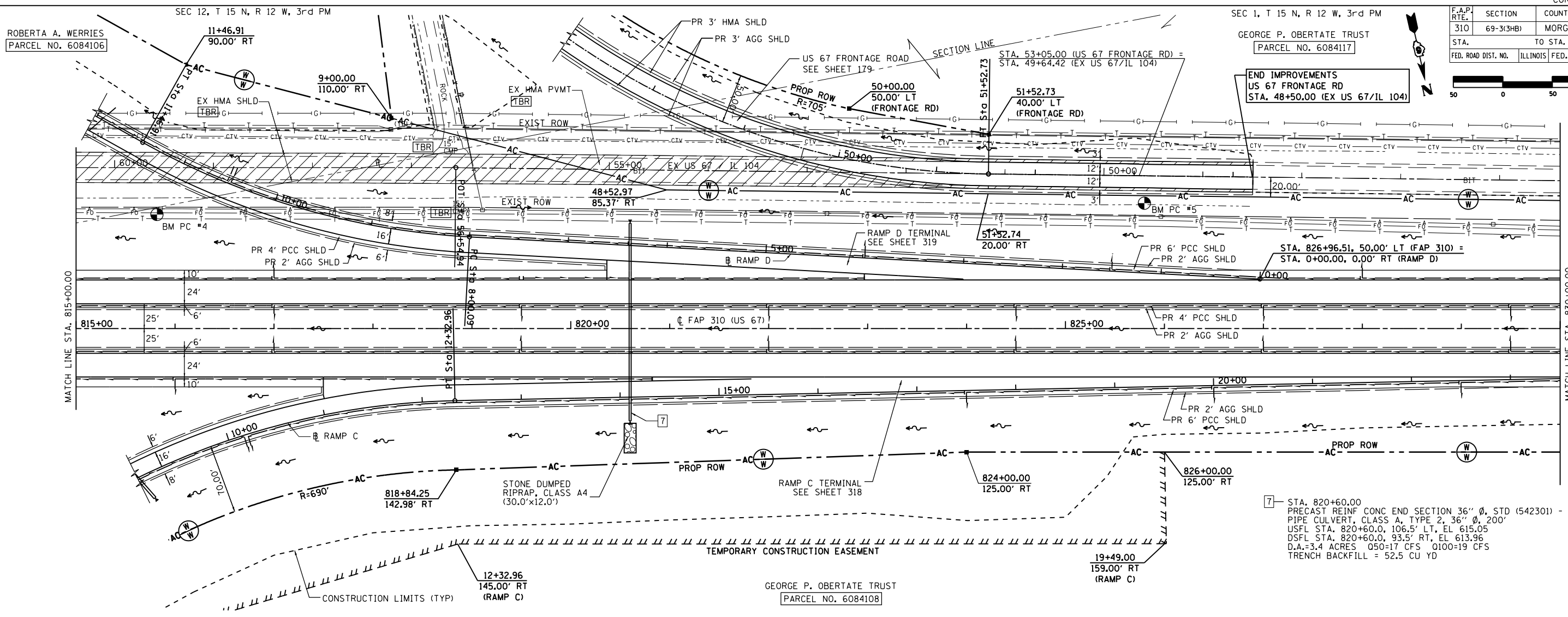
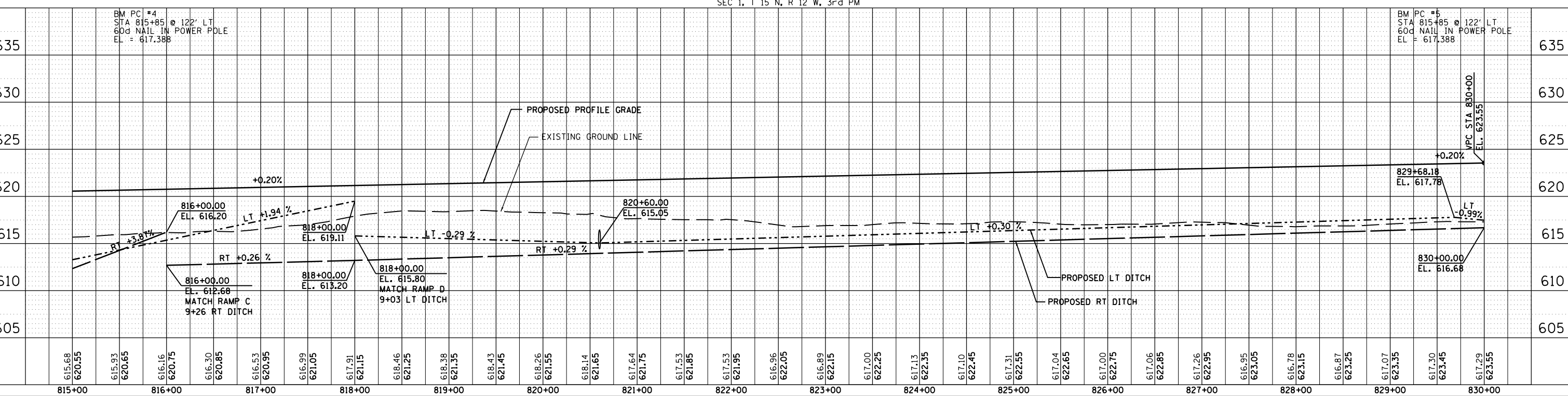


PLAN SURVEYED BY DATE
 PLOTTED BY DATE
 CHECKED BY DATE
 NOTE BOOK NO. OF WAY CHECKED
 CADD FILE NAME
 PROFILE SURVEYED BY DATE
 PLOTTED BY DATE
 CHECKED BY DATE
 NOTE BOOK NO. STRUCTURE NOTATIONS CHKD
 \$FILES



F.A.P. RTE.	SECTION	COUNTY	TOTAL SHEETS	SHEET NO.
310	69-3(3HB)	MORGAN	793	130
STA.		TO STA.		
FED. ROAD DIST. NO.		ILLINOIS FED. AID PROJECT		

END IMPROVEMENTS
US 67 FRONTAGE RD
STA. 48+50.00 (EX US 67/IL 104)



7 STA. 820+60.00
PRECAST REINF CONC END SECTION 36" Ø, STD (542301) - 2 EACH
PIPE CULVERT, CLASS A, TYPE 2, 36" Ø, 200'
USFL STA. 820+60.0, 106.5' LT, EL 615.05
DSFL STA. 820+60.0, 93.5' RT, EL 613.96
D.A.=3.4 ACRES 050=17 CFS 0100=19 CFS
TRENCH BACKFILL = 52.5 CU YD