

F.A.P. RTE.	SECTION	COUNTY	TOTAL SHEETS	SHEET NO.
310	69-3(3HB)	MORGAN	793	146

SEC 3, T 15 N, R 12 W, 3rd PM

SEC 4, T 15 N, R 12 W, 3rd PM

1:14:21 PM

Mar-29-2011 01:14:21PM

EXIST. CURVE 225
 PI STA. = 495+08.70
 $\Delta = 8^{\circ} 07' 54''$ (LT)
 $D = 0^{\circ} 49' 53''$
 $R = 6,890.74'$
 $T = 489.80'$
 $L = 977.96'$
 $E = 17.39'$
 P.C. STA. = 490+18.90
 P.T. STA. = 499+96.86

CHARLES F. MOWRY
 MARY R. MOWRY
 PARCEL NO. 6084133

32- STA. 975+50.0 LT
 PIPE CULVERT, CLASS D, TYPE 1, 15" ϕ , 52'
 METAL END SECTION, STD (542401) - 2 EACH
 USFL STA. 975+74.4, 161.3' LT, EL 625.32
 DSFL STA. 975+23.0, 161.3' LT, EL 624.65

33- STA 613+90 (SERVICE DRIVE 93)
 INLET TYPE A (STD. 602301)
 W/ TY 8 GRATE (STD. 604036) - 1 EACH
 $TG = 626.00$ - STA. 613+90.0, 17.8' LT
 PIPE CULVERT, CLASS D, TYPE 1 - 15" ϕ - x 62'
 METAL END SECTION (STD. 542401) - 1 EACH
 USFL 623.90 - STA. 613+90.0, 16.8' LT
 DSFL 623.27 - STA. 613+90.0, 45.2' RT
 TRENCH BACKFILL = 4.1 CU YD

PROP. CURVE S93
 PI STA. = 614+06.00 (978+17.19 138.75' LT)
 $\Delta = 90^{\circ} 00' 00''$ (LT)
 $D = 127^{\circ} 19' 26''$
 $R = 45.00'$
 $T = 45.00'$
 $L = 70.69'$
 $E = 18.64'$
 P.C. STA. = 613+61.00 (977+72.67 137.91' LT)
 P.T. STA. = 614+31.69 (978+16.29 183.74' LT)

34- STA. 978+98.00 SKEW = 15° LT AH
 PRECAST REINF CONC END SECTION 66" ϕ , STD (542301)
 PIPE CULVERT, CLASS A, TYPE 2, 66" ϕ , 182'
 PRECAST REINF CONC END SECTION 66" ϕ , STD (542301)
 USFL STA. 979+20.3, 83.8' LT, EL 622.18
 DSFL STA. 978+73.2, 92.0' RT, EL 618.28
 D.A. = 137.5 ACRES 050=118 CFS 0100=139 CFS
 TRENCH BACKFILL = 93.1 CU YD

PROP. CURVE MLE17
 PI STA. = 979+37.53
 $\Delta = 8^{\circ} 10' 00''$ (RT)
 $D = 0^{\circ} 26' 12''$
 $R = 13,123.33'$
 $T = 936.85'$
 $L = 1,870.54'$
 $E = 33.40'$
 $e = 0.015$
 P.C. STA. = 970+00.67
 P.T. STA. = 988+71.21
 S.E. TRANSITION
 STA 968+87.00 TO STA 970+23.00
 STA 988+49.00 TO STA 989+85.00

SEE SHEET 220
 FOR INTERSECTION DETAIL

SEE SHEET 169
 FOR TRANSITION A PLAN SHEET

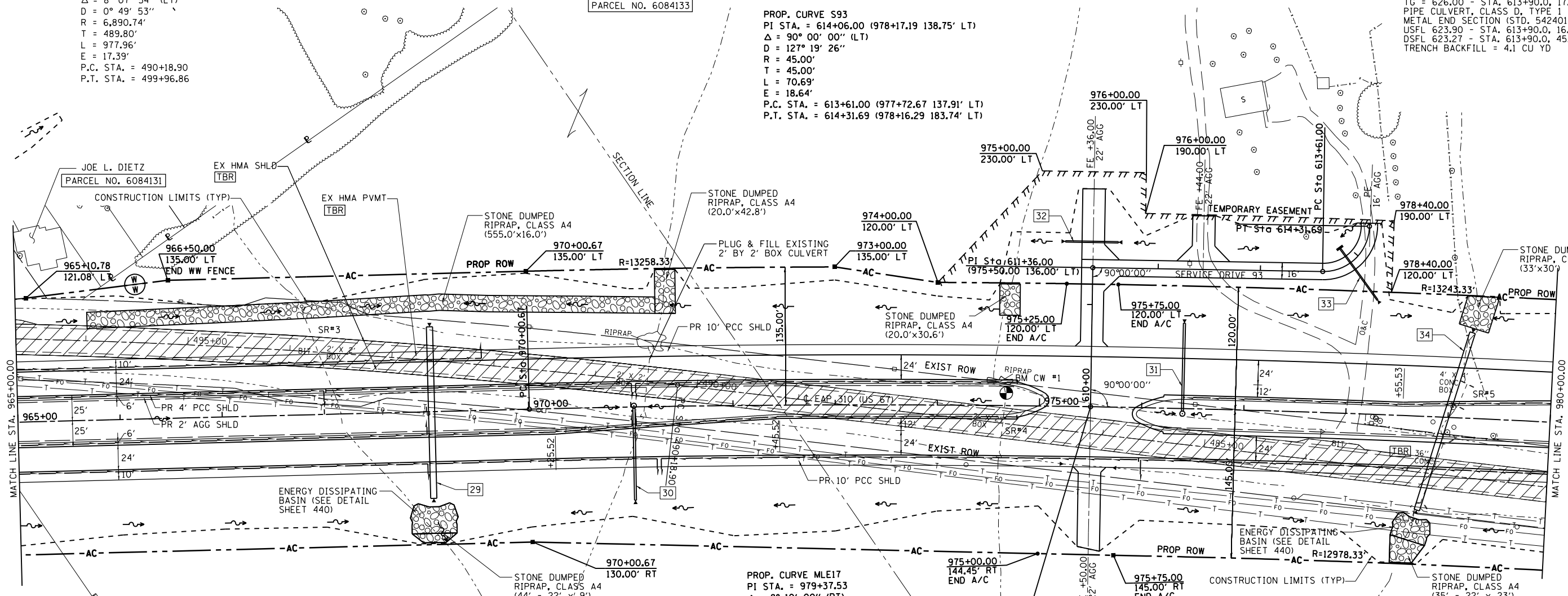
31- STA. 976+40.00 LT
 MANHOLE TYPE A, 5' ϕ W MEDIAN INLET STD (604106) FLAT SLAB TOP
 STA. 976+40.0, 5.0' RT, INV EL 623.70, TG EL 628.06
 PIPE CULVERT, CLASS A, TYPE 2, 24" ϕ , 86'
 PRECAST REINF CONC END SECTION 24" ϕ , STD (542301)
 USFL STA. 976+40.0, 2.5' RT, EL 624.20
 DSFL STA. 976+40.0, 83.5' LT, EL 623.77
 TRENCH BACKFILL = 26.6 CU YD

CHARLES F. MOWRY
 MARY R. MOWRY
 PARCEL NO. 6084133

BM CW #1
 STA 974+68 @ 12' LT
 CHISEL SQUARE IN S PIPE CULV
 EL = 624.085

29- STA. 969+05.00
 PRECAST REINF CONC END SECTION 72" ϕ , STD (542301) - 2 EACH
 PIPE CULVERT, CLASS A, TYPE 2, 72" ϕ , 168'
 USFL STA. 969+05.0, 83.1' LT, EL 617.55
 DSFL STA. 969+05.0, 84.9' RT, EL 616.88
 D.A. = 179.9 ACRES 050=239 CFS 0100=279 CFS
 TRENCH BACKFILL = 100.2 CU YD

30- STA. 971+03.00 RT
 MANHOLE TYPE A, 5' ϕ W MEDIAN INLET STD (604106) FLAT SLAB TOP
 STA. 971+03.0, 1.2' LT, INV EL 618.43, TG EL 625.09
 PIPE CULVERT, CLASS A, TYPE 2, 24" ϕ , 90'
 PRECAST REINF CONC END SECTION 24" ϕ , STD (542301)
 USFL STA. 971+03.0, 1.3' RT, EL 618.93
 DSFL STA. 971+03.0, 91.3' RT, EL 618.42
 TRENCH BACKFILL = 11.2 CU YD



SEC 3, T 15 N, R 12 W, 3rd PM

SEC 4, T 15 N, R 12 W, 3rd PM

SECTION 69-3(3HB)

MORGAN COUNTY