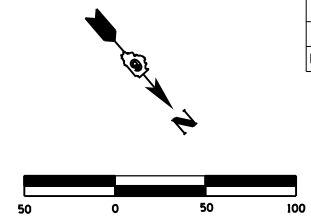


F.A.P. RTE.	SECTION	COUNTY	TOTAL SHEETS	SHEET NO.
310	69-3(3HB)	MORGAN	793	148
STA.		TO STA.		
FED. ROAD DIST. NO.		ILLINOIS FED. AID PROJECT		

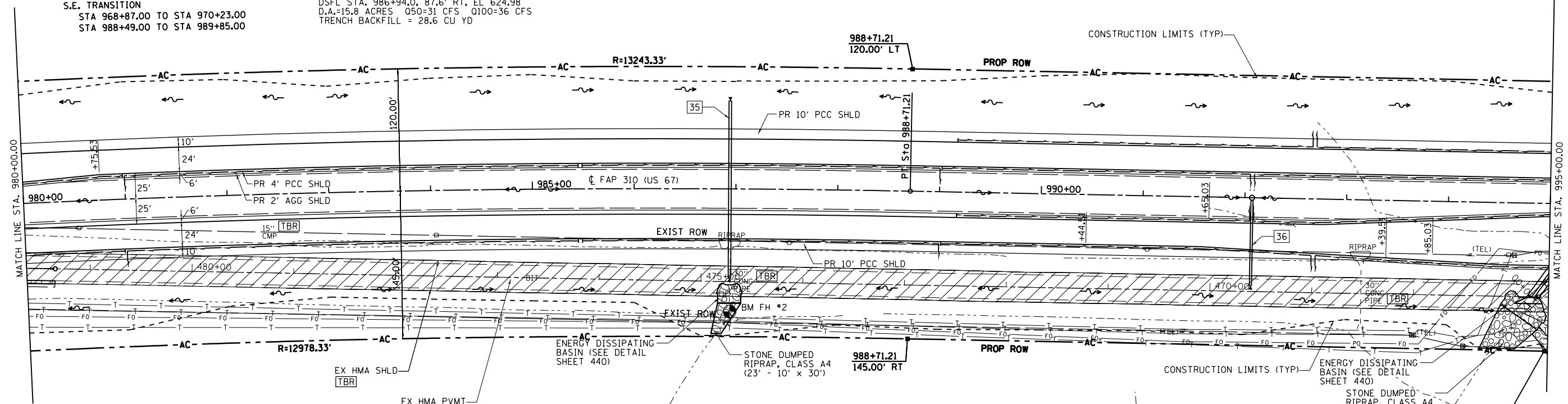
SEC 4, T 15 N, R 12 W, 3rd PM



PROP. CURVE MLE17  
 PI STA. = 979+37.53  
 $\Delta = 8^\circ 10' 00''$  (RT)  
 $D = 0^\circ 26' 12''$   
 $R = 13,123.33'$   
 $T = 936.85'$   
 $L = 1,870.54'$   
 $E = 33.40'$   
 $e = 0.015$   
 P.C. STA. = 970+00.67  
 P.T. STA. = 988+71.21  
 S.E. TRANSITION  
 STA 968+87.00 TO STA 970+23.00  
 STA 988+49.00 TO STA 989+85.00

35 STA. 986+94.00  
 PRECAST REINF CONC END SECTION 30"  $\phi$ , STD (542301) - 2 EACH  
 PIPE CULVERT, CLASS A, TYPE 2, 30"  $\phi$ , 174'  
 USFL STA. 986+94.0, 86.4' LT, EL 626.13  
 DSFL STA. 986+94.0, 87.6' RT, EL 624.98  
 D.A.=15.8 ACRES 050=31 CFS 0100=36 CFS  
 TRENCH BACKFILL = 28.6 CU YD

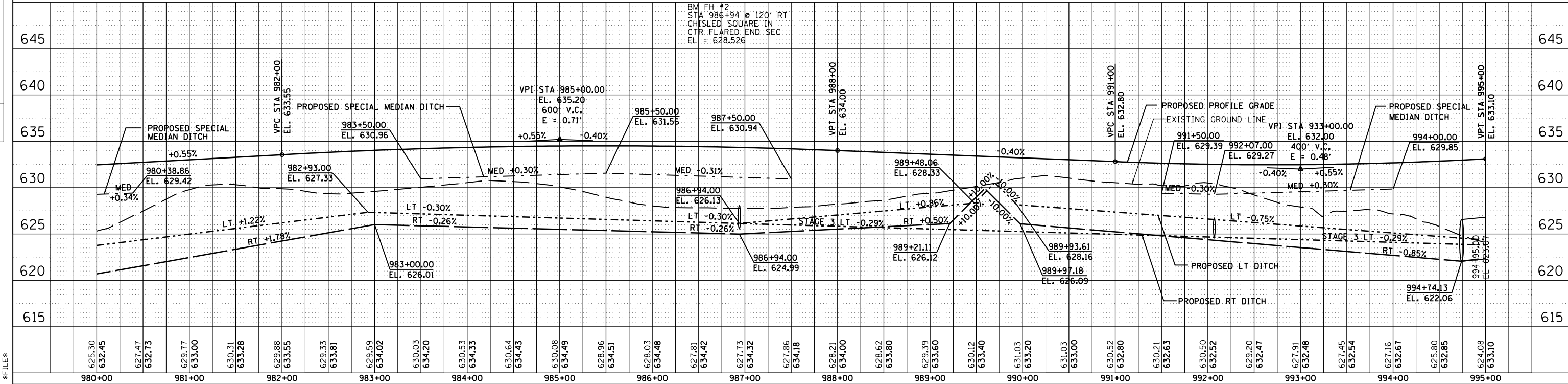
CHARLES F. MOWRY  
 MARY R. MOWRY  
 PARCEL NO. 6084133



36 STA. 992+07.00 RT  
 MANHOLE TYPE A, 5'  $\phi$  W MEDIAN INLET STD (604106) FLAT SLAB TOP  
 STA. 992+07.0, 0.0' RT, INV EL 624.20, TG EL 629.27  
 PIPE CULVERT, CLASS A, TYPE 2, 24"  $\phi$ , 84'  
 PRECAST REINF CONC END SECTION 24"  $\phi$ , STD (542301)  
 USFL STA. 992+07.0, 2.5' RT, EL 624.70  
 DSFL STA. 992+07.0, 86.5' RT, EL 624.34  
 TRENCH BACKFILL = 19.5 CU YD

CHARLES F. MOWRY  
 MARY R. MOWRY  
 PARCEL NO. 6084133

SEC 4, T 15 N, R 12 W, 3rd PM



SECTION 69-3(3HB)

MORGAN COUNTY

PLAN	DATE
SURVEYED	
PLOTTED	
CHECKED	
BY	
DATE	

PROFILE	DATE
SURVEYED	
PLOTTED	
CHECKED	
BY	
DATE	

1:14:33 PM

1:14:33 PM

\$FILES