

F.A.P. RTE.	SECTION	COUNTY	TOTAL SHEETS	SHEET NO.
310	69-3(3HB)	MORGAN	793	149
STA.		TO STA.		
FED. ROAD DIST. NO.		ILLINOIS FED. AID PROJECT		

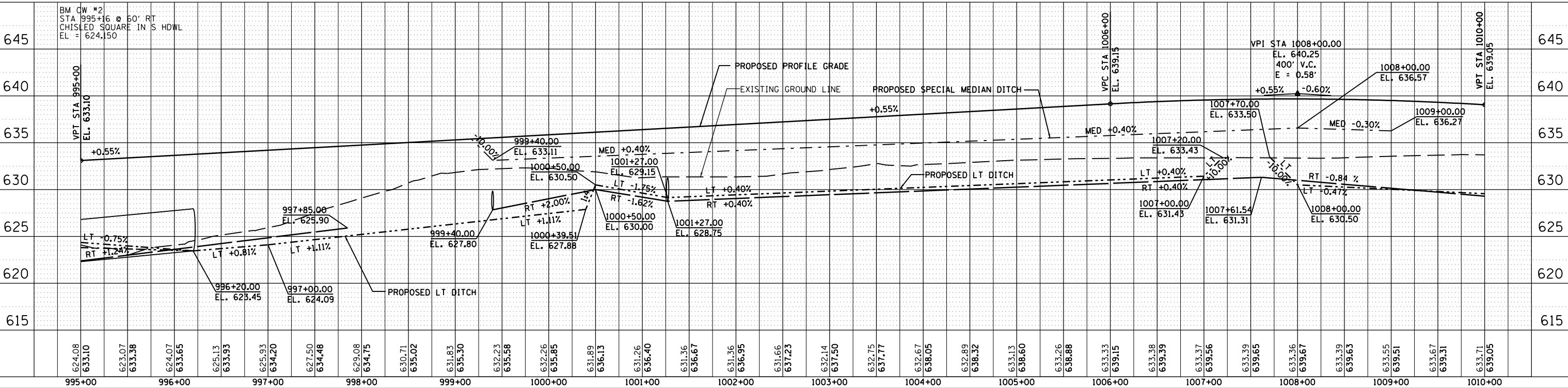
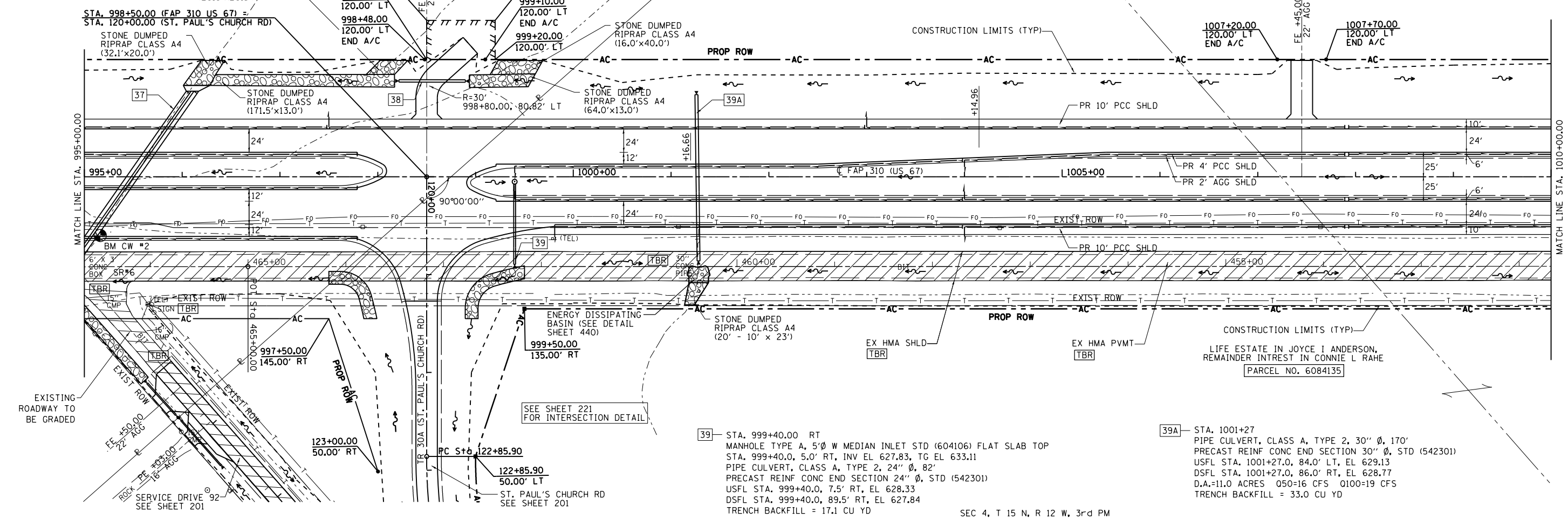
SEC 4, T 15 N, R 12 W, 3rd PM

CHARLES F. MOWRY
MARY R. MOWRY
PARCEL NO. 6084133

LIFE ESTATE IN JOYCE I ANDERSON,
REMAINDER INTEREST IN CONNIE L RAHE
PARCEL NO. 6084135

38 STA. 998+57 98' LT
PIPE CULVERT, CLASS D, TYPE 1 - 30" Ø - x 68'
METAL END SECTION (STD. 542401) - 2 EACH
USFL STA. 998+89.6, 97.9' LT
DSFL STA. 998+21.6, 98.1' LT

37 STA. 995+49.00 SKEW 35° LT AH
CAST-IN-PLACE REINF CONC END SECTION FOR DOUBLE 48" Ø CLASS A, (SEE CULVERT DETAILS)
PIPE CULVERT, CLASS A, TYPE 2, 48" Ø, 220' (TWO BARRELS)
CAST-IN-PLACE REINF CONC END SECTION FOR DOUBLE 48" Ø CLASS A, (SEE CULVERT DETAILS)
USFL STA. 996+10.6, 87.5' LT, EL 623.47
DSFL STA. 994+84.4, 92.7' RT, EL 622.05
D.A.=158.0 ACRES 050=136 CFS 0100=161 CFS
TRENCH BACKFILL = 122.3 CU YD



SECTION 69-3(3HB)

MORGAN COUNTY

11:43:39 PM

PLAN SURVEYED BY DATE
PLOTTED BY DATE
CHECKED BY DATE
NOTE BOOK NO. OF WAY CHECKED
CADD FILE NAME

PROFILE SURVEYED BY DATE
PLOTTED BY DATE
CHECKED BY DATE
NOTE BOOK NO. STRUCTURE NOTATIONS CHKD

\$FILE\$