

F.A.P. RTE.	SECTION	COUNTY	TOTAL SHEETS	SHEET NO.
310	69-3(3HB)	MORGAN	793	151
STA.	TO STA.			
FED. ROAD DIST. NO.	ILLINOIS	FED. AID PROJECT		

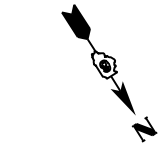
EXIST. CURVE 222
 PI STA. = 429+31.70
 $\Delta = 16^\circ 23' 05''$ (RT)
 $D = 1^\circ 00' 04''$
 $R = 5,723.16'$
 $T = 823.94'$
 $L = 1,636.63'$
 $E = 59.01'$
 P.C. STA. = 421+07.76
 P.T. STA. = 437+44.39

PROP. CURVE MLE18
 PI STA. = 1031+15.75
 $\Delta = 16^\circ 26' 00''$ (LT)
 $D = 0^\circ 58' 13''$
 $R = 5,905.50'$
 $T = 852.75'$
 $L = 1,693.79'$
 $E = 61.25'$
 $e = 0.033$
 P.C. STA. = 1022+63.00
 P.T. STA. = 1039+56.79
 S.E. TRANSITION
 STA 1021+20.00 TO STA 1023+13.00
 STA 1039+07.00 TO STA 1041+00.00

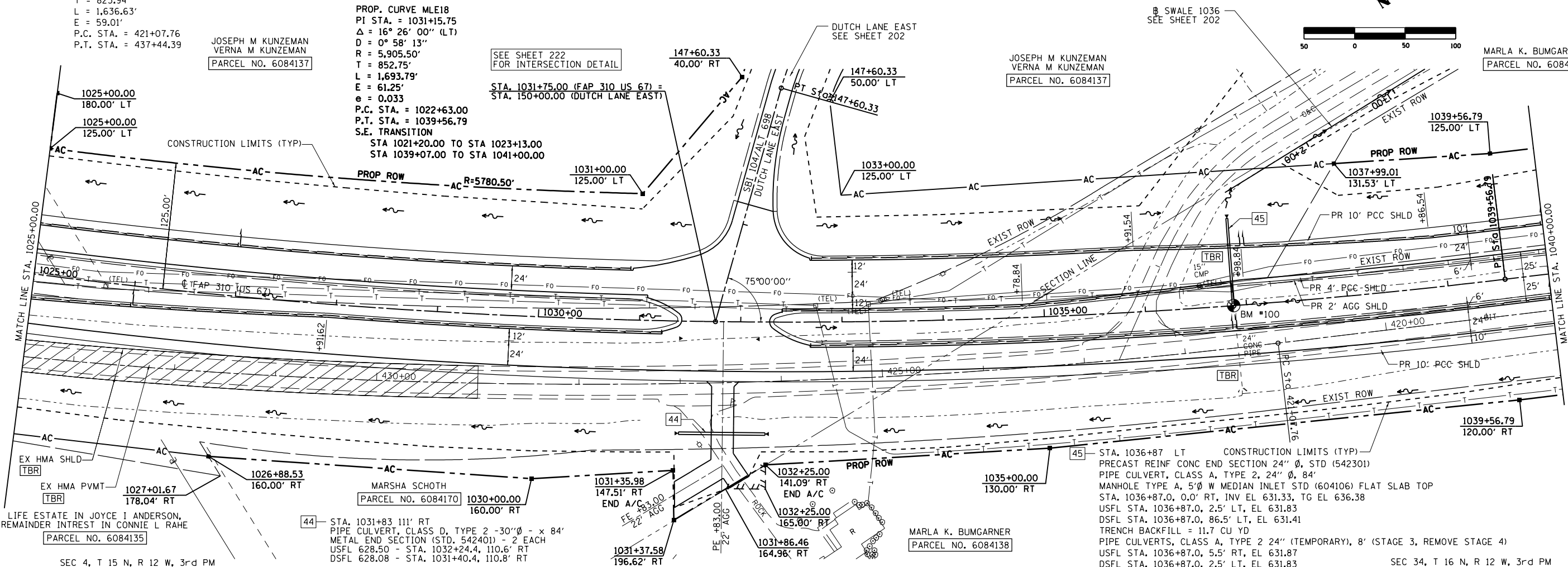
JOSEPH M KUNZEMAN
 VERNA M KUNZEMAN
 PARCEL NO. 6084137

JOSEPH M KUNZEMAN
 VERNA M KUNZEMAN
 PARCEL NO. 6084137

MARLA K. BUMGARNER
 PARCEL NO. 6084113



1:14:52 PM
 PLAN SURVEYED BY DATE
 PLOTTED BY DATE
 CHECKED BY DATE
 NO. OF WAY CHECKED
 CAD FILE NAME
 PROFILE SURVEYED BY DATE
 PLOTTED BY DATE
 CHECKED BY DATE
 NO. OF STRUCTURE NOTATIONS CHKD
 \$FILES



STA. 1036+87 LT CONSTRUCTION LIMITS (TYP)
 PRECAST REINF CONC END SECTION 24" ϕ , STD (542301)
 PIPE CULVERT, CLASS A, TYPE 2, 24" ϕ , 84"
 MANHOLE TYPE A, 5' ϕ W MEDIAN INLET STD (604106) FLAT SLAB TOP
 STA. 1036+87.0, 0.0' RT, INV EL 631.33, TG EL 636.38
 USFL STA. 1036+87.0, 2.5' LT, EL 631.83
 DSFL STA. 1036+87.0, 86.5' LT, EL 631.41
 TRENCH BACKFILL = 11.7 CU YD
 PIPE CULVERTS, CLASS A, TYPE 2 24" (TEMPORARY), 8' (STAGE 3, REMOVE STAGE 4)
 USFL STA. 1036+87.0, 5.5' RT, EL 631.87
 DSFL STA. 1036+87.0, 2.5' LT, EL 631.83

44 STA. 1031+83 111' RT
 PIPE CULVERT, CLASS D, TYPE 2 -30" ϕ - x 84"
 METAL END SECTION (STD. 542401) - 2 EACH
 USFL 628.50 - STA. 1032+24.4, 110.6' RT
 DSFL 628.08 - STA. 1031+40.4, 110.8' RT

