

F.A.P. RTE.	SECTION	COUNTY	TOTAL SHEETS	SHEET NO.
310	69-3(3HB)	MORGAN	793	152
STA.		TO STA.		
FED. ROAD DIST. NO.		ILLINOIS	FED. AID PROJECT	

SEC 34, T 16 N, R 12 W, 3rd PM

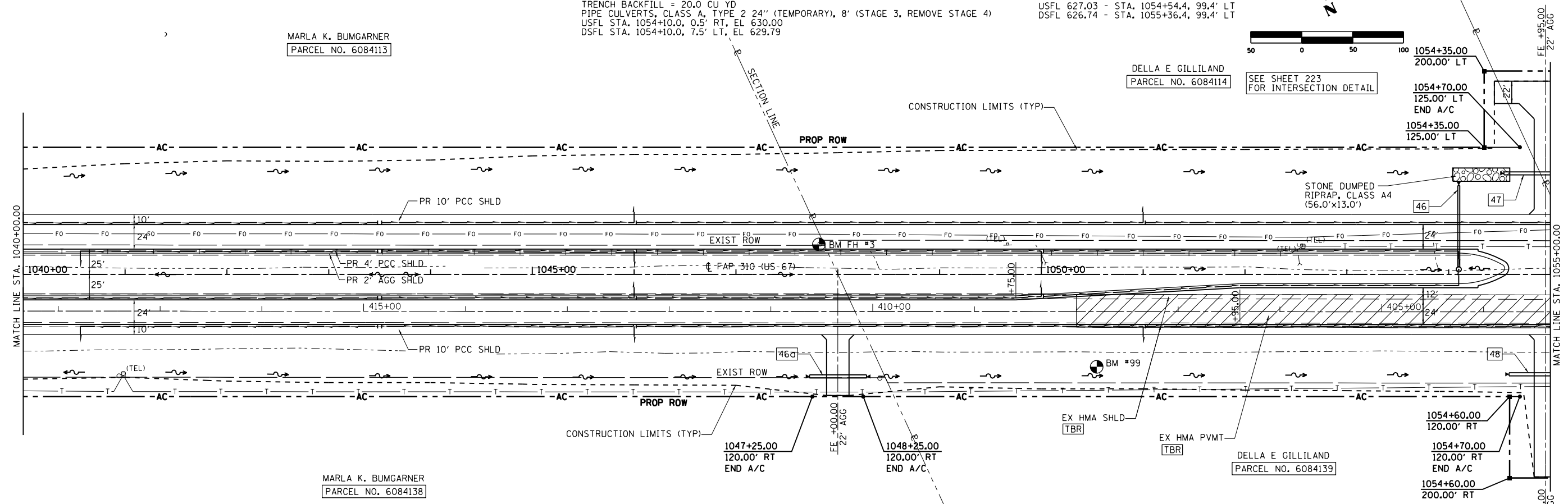
SEC 33, T 16 N, R 12 W, 3rd PM

- 46- STA. 1054+10.00 LT
MANHOLE TYPE A, 5' Ø W MEDIAN INLET STD (604106) FLAT SLAB TOP
STA. 1054+10.0, 5.0' LT, INV EL 627.66, TG EL 633.94
PIPE CULVERT, CLASS A, TYPE 2, 24" Ø, 82'
PRECAST REINF CONC END SECTION 24" Ø, STD (542301)
USFL STA. 1054+10.0, 7.5' LT, EL 629.79
DSFL STA. 1054+10.0, 89.5' LT, EL 627.43
TRENCH BACKFILL = 20.0 CU YD
PIPE CULVERTS, CLASS A, TYPE 2 24" (TEMPORARY), 8' (STAGE 3, REMOVE STAGE 4)
USFL STA. 1054+10.0, 0.5' RT, EL 630.00
DSFL STA. 1054+10.0, 7.5' LT, EL 629.79
- 47- STA. 1054+95.99' LT
PIPE CULVERT, CLASS D, TYPE 2 -36" Ø - x 82'
METAL END SECTION (STD. 542401) - 2 EACH
USFL 627.03 - STA. 1054+54.4, 99.4' LT
DSFL 626.74 - STA. 1055+36.4, 99.4' LT

MARLA K. BUMGARNER
PARCEL NO. 6084113

DELLA E GILLILAND
PARCEL NO. 6084114

SEE SHEET 223
FOR INTERSECTION DETAIL



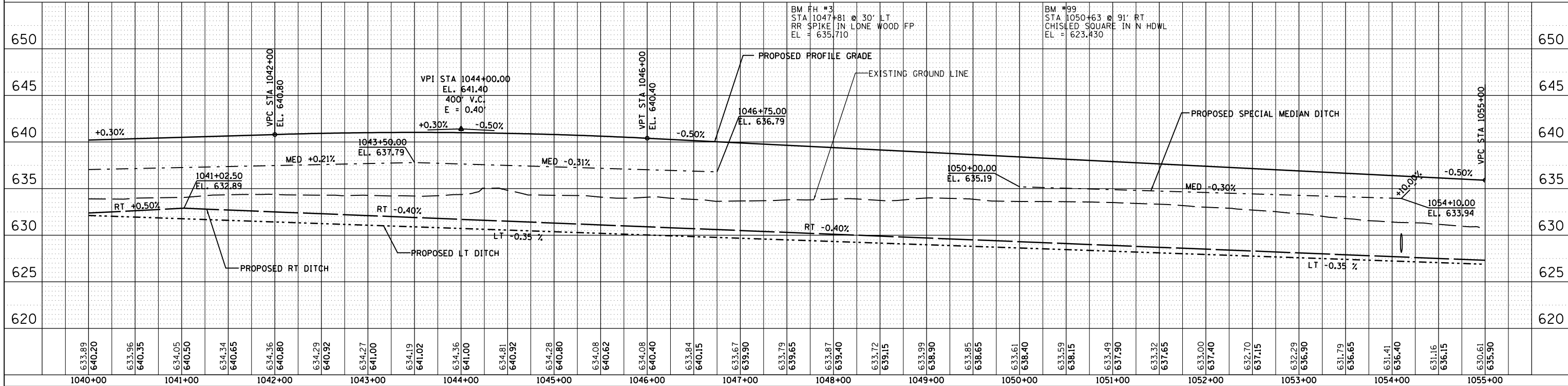
MARLA K. BUMGARNER
PARCEL NO. 6084138

DELLA E GILLILAND
PARCEL NO. 6084139

- 46a- STA. 1048+00 100' RT
PIPE CULVERT, CLASS D, TYPE 1 -36" Ø - x 56'
METAL END SECTION (STD. 542401) - 2 EACH
USFL 630.21 - STA. 1047+72.3, 100.2' RT
DSFL 629.99 - STA. 1048+28.3, 100.2' RT
- 48- STA. 1054+95.98' RT
PIPE CULVERT, CLASS D, TYPE 2 -36" Ø - x 72'
METAL END SECTION (STD. 542401) - 2 EACH
USFL 627.46 - STA. 1054+59.4, 98.1' RT
DSFL 627.17 - STA. 1055+31.4, 98.1' RT

SEC 34, T 16 N, R 12 W, 3rd PM

SEC 33, T 16 N, R 12 W, 3rd PM



PLAN	DATE
BY	
DATE	
BY	
DATE	
BY	
DATE	

PLAN	DATE
BY	
DATE	
BY	
DATE	
BY	
DATE	

PROFILE	DATE
BY	
DATE	
BY	
DATE	
BY	
DATE	

\$FILES