

F.A.P. RTE.	SECTION	COUNTY	TOTAL SHEETS	SHEET NO.
310	69-3(3HB)	MORGAN	793	157
STA.		TO STA.		
FED. ROAD DIST. NO.	ILLINOIS	FED. AID PROJECT		

1:15:28 PM

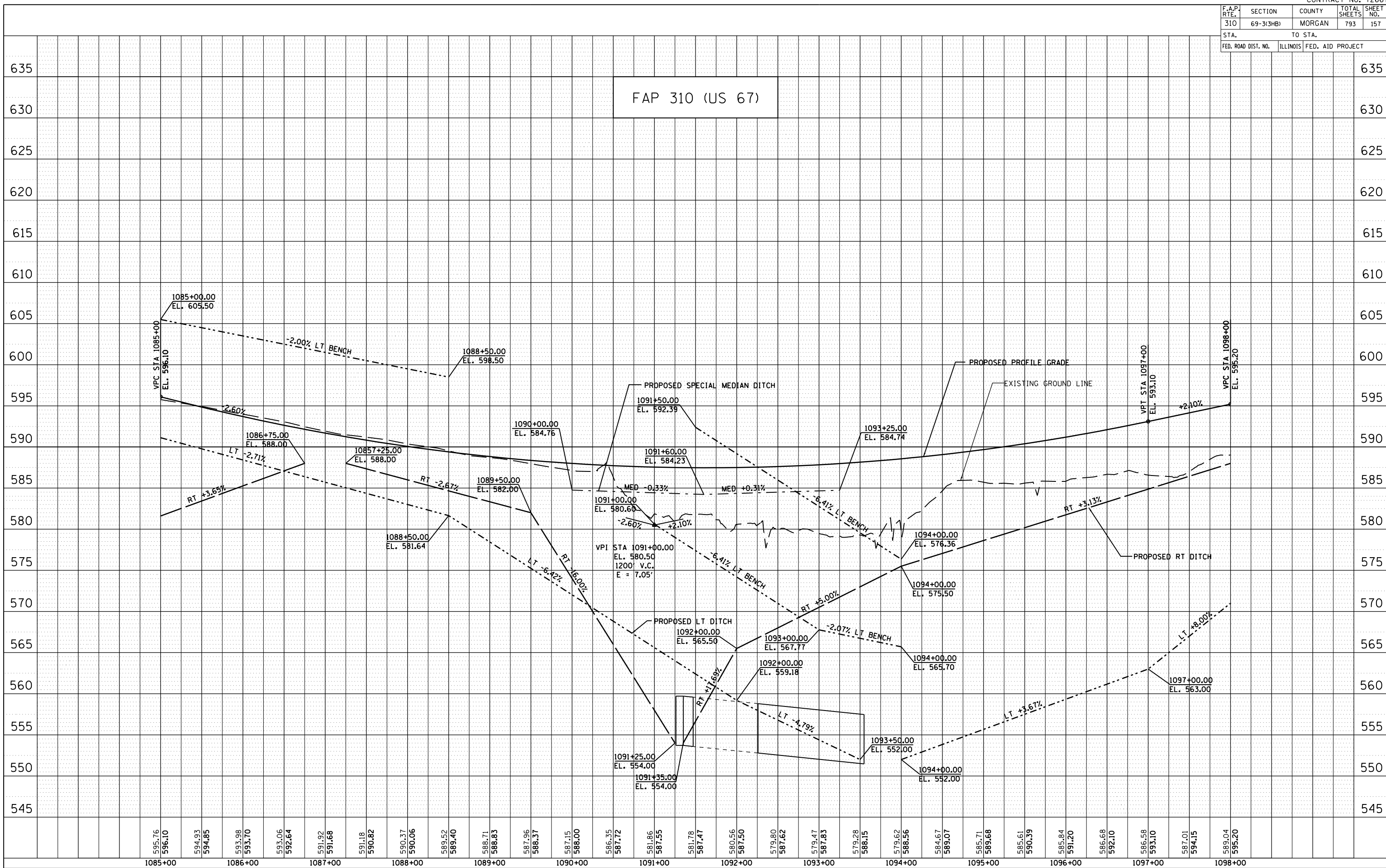
1:15:28 PM

\$FILE\$

PLAN	SURVEYED	DATE
NO.	BY	
NOTE BOOK	BY	
NO.	BY	
NO.	BY	

PROFILE	SURVEYED	DATE
NO.	BY	
NOTE BOOK	BY	
NO.	BY	
NO.	BY	

FAP 310 (US 67)



SECTION 69-3(3HB)

MORGAN COUNTY