

F.A.P. RTE.	SECTION	COUNTY	TOTAL SHEETS	SHEET NO.
310	69-3(3HB)	MORGAN	793	161
STA.		TO STA.		
FED. ROAD DIST. NO.	ILLINOIS	FED. AID PROJECT		

SEC 32, T 16 N, R 12 W, 3rd PM

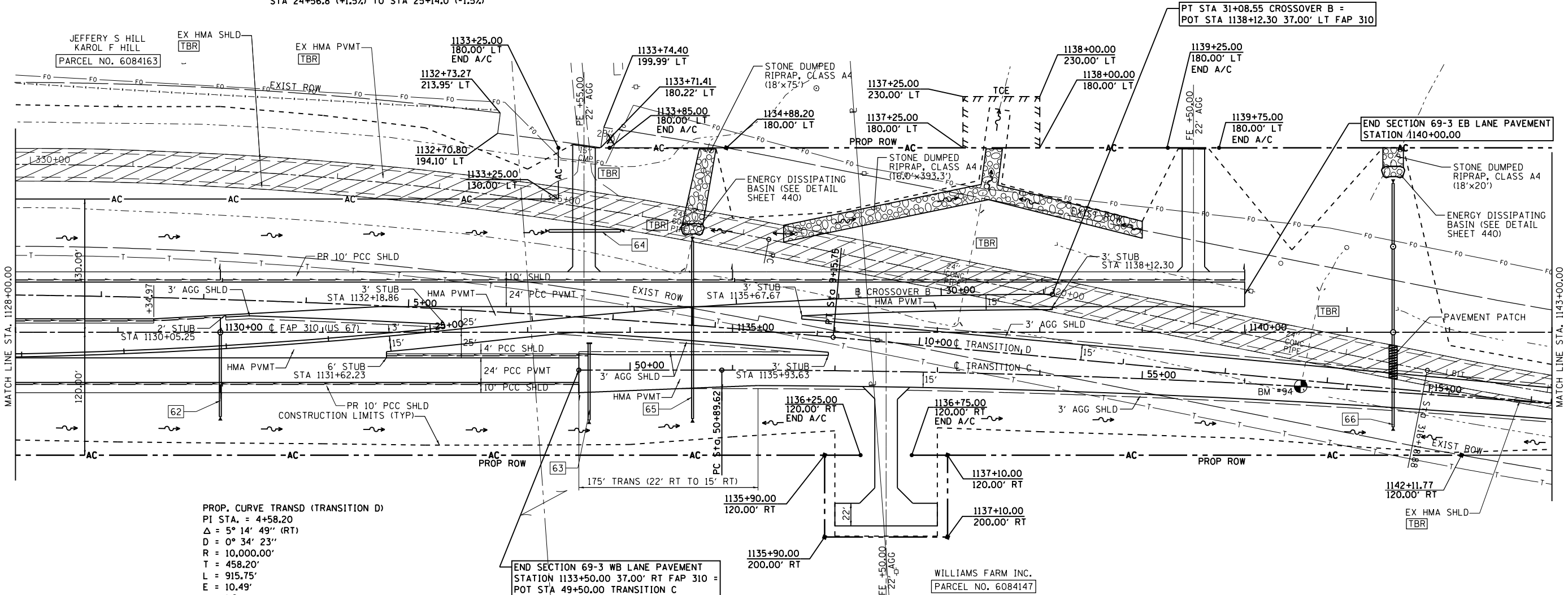
EXIST. CURVE 214
 PI STA. = 327+73.23
 $\Delta = 14^\circ 53' 28''$ (LT)
 $D = 1^\circ 30' 03''$
 $R = 3,817.53'$
 $T = 498.90'$
 $L = 992.18'$
 $E = 32.46'$
 $e = 1.5\%$
 P.C. STA. = 322+74.33
 P.T. STA. = 332+66.51

PROP. CURVE X002 (CROSSOVER B)
 PI STA. = 22+77.43
 $\Delta = 6^\circ 24' 56''$ (LT)
 $D = 1^\circ 09' 27''$
 $R = 4,950.00'$
 $T = 277.43'$
 $L = 554.28'$
 $E = 7.77'$
 $e = 1.5\%$
 P.C. STA. = 20+00.00
 P.T. STA. = 25+54.28
 S.E. TRANSITION
 STA 24+56.8 (+1.5%) TO STA 25+14.0 (-1.5%)

64 STA. 1133+55.99' LT
 PIPE CULVERT, CLASS D, TYPE 2 - 30" ϕ - x 70'
 METAL END SECTION (STD. 542401) - 2 EACH
 USFL 600.13 - STA. 1133+20.8, 98.9' LT
 DSFL 599.57 - STA. 1133+90.8, 99.1' LT

PROP. CURVE X003 (CROSSOVER B)
 PI STA. = 28+31.70
 $\Delta = 6^\circ 24' 56''$ (RT)
 $D = 1^\circ 09' 27''$
 $R = 4,950.00'$
 $T = 277.43'$
 $L = 554.28'$
 $E = 7.77'$
 $e = -1.5\%$
 P.C. STA. = 25+54.28
 P.T. STA. = 31+08.55

WILLIAMS FARM INC.
 PARCEL NO. 6084145



PROP. CURVE TRANS D (TRANSITION D)
 PI STA. = 4+58.20
 $\Delta = 5^\circ 14' 49''$ (RT)
 $D = 0^\circ 34' 23''$
 $R = 10,000.00'$
 $T = 458.20'$
 $L = 915.75'$
 $E = 10.49'$
 $e = NC$
 P.C. STA. = 0+00.00
 P.T. STA. = 9+15.75
 S.E. TRANSITION
 STA 9+16.0 (+1.5%) TO STA 10+12.0 (-1.5%) LT LANE

65 STA. 1134+61.00
 PRECAST REINF CONC END SECTION 24" ϕ , STD (542301) - 2 EACH
 PIPE CULVERT, CLASS A, TYPE 2, 24" ϕ , 174'
 USFL STA. 1134+61.0, 84.5' RT, EL 600.65
 DSFL STA. 1134+61.0, 89.5' LT, EL 599.01
 D.A.=3.3 ACRES O50=11 CFS Q100=13 CFS
 TRENCH BACKFILL = 36.8 CU YD

PROP. CURVE TRANS C (TRANSITION C)
 PI STA. = 55+47.82
 $\Delta = 5^\circ 14' 49''$ (RT)
 $D = 0^\circ 34' 23''$
 $R = 10,000.00'$
 $T = 458.20'$
 $L = 915.75'$
 $E = 10.49'$
 $e = 1.5\%$
 P.C. STA. = 50+89.62
 P.T. STA. = 60+05.37
 S.E. TRANSITION
 STA 50+42.0 (-1.5%) TO STA 51+38.0 (+1.5%) LT LANE

66 STA. 1141+45.00
 PRECAST REINF CONC END SECTION 24" ϕ , STD (542301) - 2 EACH
 PIPE CULVERT, CLASS A, TYPE 1, 24" ϕ , 90'
 USFL STA. 1141+45.0, 92.5' RT, EL 595.93
 DSFL STA. 1141+45.0, 2.5' RT, EL 595.03
 MANHOLE TYPE A, 5' ϕ W TY 1 FR & CLSD LID STD (604001) FLAT SLAB TOP
 STA. 1141+45.0, INV EL 594.98, TL EL 598.87
 PIPE CULVERT, CLASS A, TYPE 2, 24" ϕ , 80'
 USFL STA. 1141+45.0, 2.5' LT, EL 594.98
 DSFL STA. 1141+45.0, 81.1' LT, EL 593.01
 MANHOLE TYPE A, 5' ϕ W TYPE 1 FRAME & CLOSED LID STD (604001)
 STA. 1141+45.0, 83.6' LT, INV EL 579.16, TL EL 601.33
 PIPE CULVERT, CLASS A, TYPE 4, 24" ϕ , 60'
 USFL STA. 1141+45.0, 86.1' LT, EL 579.16
 DSFL STA. 1141+45.0, 145.5' LT, EL 578.57
 TRENCH BACKFILL = 26.9 CU YD

62 STA. 1130+00.00 RT
 MANHOLE TYPE A, 5' ϕ W MEDIAN INLET STD (604106) FLAT SLAB TOP
 PIPE CULVERT, CLASS A, TYPE 2, 24" ϕ , 80'
 PRECAST REINF CONC END SECTION 24" ϕ , STD (542301)
 USFL STA. 1130+00.0, 2.5' RT, EL 603.17
 DSFL STA. 1131+00.0, 82.5' RT, EL 602.97
 INLET STA. 1131+00.0, ϕ , EL 606.66
 TRENCH BACKFILL = 19.0 CU YD

63 STA. 1133+60.00 RT
 MANHOLE TYPE A, 5' ϕ W MEDIAN INLET STD (604106) FLAT SLAB TOP
 PIPE CULVERT, CLASS A, TYPE 2, 24" ϕ , 72'
 PRECAST REINF CONC END SECTION 24" ϕ , STD (542301)
 USFL STA. 1133+60.0, 13.3' RT, EL 602.94
 DSFL STA. 1133+60.0, 85.3' RT, EL 601.33
 INLET STA. 1133+60.0, 10.5' RT, EL 606.39
 TRENCH BACKFILL = 11.0 CU YD

GARY & CHRISTINE
 STAAKE
 PARCEL NO. 6084146

SEC 32, T 16 N, R 12 W, 3rd PM

SECTION 69-3(3HB)

MORGAN COUNTY

1:15:52 PM

Mon-2-9-2011 01:15:52PM

\$ FILE \$

