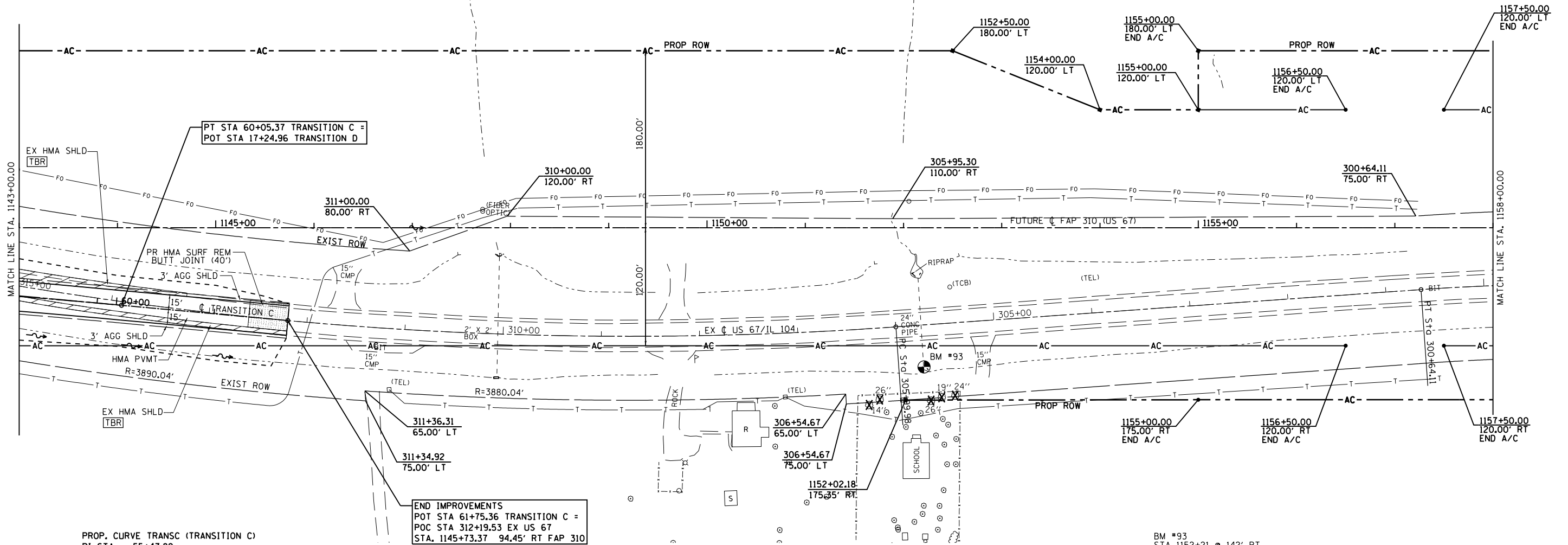


F.A.P. RTE.	SECTION	COUNTY	TOTAL SHEETS	SHEET NO.
310	69-3(3HB)	MORGAN	793	164
STA.		TO STA.		
FED. ROAD DIST. NO.	ILLINOIS	FED. AID PROJECT		

SEC 32, T 16 N, R 12 W, 3rd PM

EXIST. CURVE 208
 PI STA. = 311+12.48
 $\Delta = 15^\circ 18' 08''$ (RT)
 $D = 1^\circ 30' 07''$
 $R = 3,815.04'$
 $T = 512.50'$
 $L = 1,018.90'$
 $E = 34.27'$
 P.C. STA. = 305+99.98
 P.T. STA. = 316+18.88

WILLIAMS FARM INC.
 PARCEL NO. 6084145



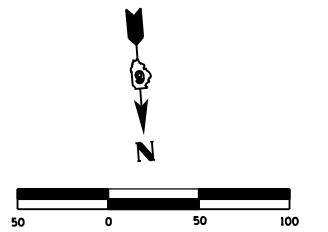
PROP. CURVE TRASC (TRANSITION C)
 PI STA. = 55+47.82
 $\Delta = 5^\circ 14' 49''$ (RT)
 $D = 0^\circ 34' 23''$
 $R = 10,000.00'$
 $T = 458.20'$
 $L = 915.75'$
 $E = 10.49'$
 $e = 1.5\%$
 P.C. STA. = 50+89.62
 P.T. STA. = 60+05.37
 S.E. TRANSITION
 STA 50+42.0 (-1.5%) TO STA 51+38.0 (+1.5%) LT LANE

END IMPROVEMENTS
 POT STA 61+75.36 TRANSITION C =
 POC STA 312+19.53 EX US 67
 STA. 1145+73.37 94.45' RT FAP 310

BM #93
 STA 1152+21 @ 142' RT
 CHISLED SQUARE IN N HDWL
 EL = 596.488

WILLIAMS FARM INC.
 PARCEL NO. 6084147

SEC 32, T 16 N, R 12 W, 3rd PM



Mar-29-2011 01:16:12PM 1:16:12 PM \$FILE\$