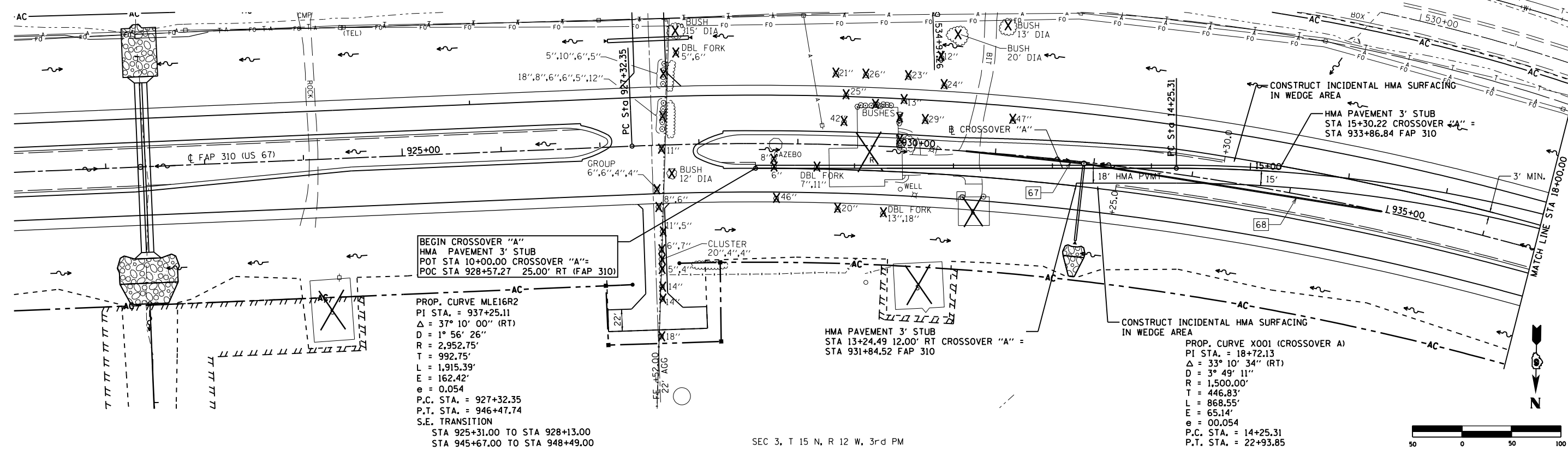


F.A.P. RTE.	SECTION	COUNTY	TOTAL SHEETS	SHEET NO.
310	69-3(3HB)	MORGAN	793	167
STA.		TO STA.		
FED. ROAD DIST. NO.		ILLINOIS FED. AID PROJECT		

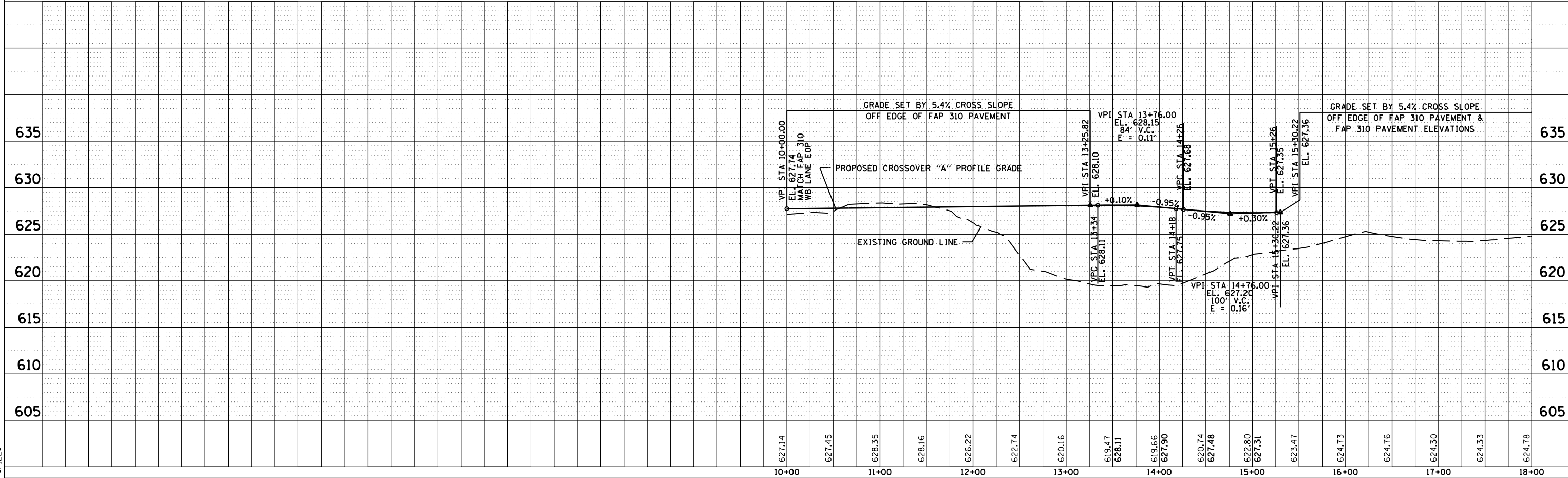
67 — STA. 931+29
 PIPE CULVERT, CLASS D, TYPE 1 (TEMPORARY) -12" Ø, 118'
 USFL 624.62 - STA. 930+70, C
 DSFL 624.20 - STA. 931+88, C

68 — STA. 933+44
 PIPE CULVERT, CLASS D, TYPE 1 (TEMPORARY) -12" Ø, 302'
 USFL 625.14 - STA. 934+95, C
 DSFL 624.20 - STA. 931+92, C
 TRENCH BACKFILL = 17.3 CU YD



PLAN	DATE
SURVEYED	
PLOTTED	
CHECKED	
BY	
NOTE BOOK	
NO.	
CADD FILE NAME	

PROFILE	DATE
SURVEYED	
PLOTTED	
CHECKED	
BY	
NOTE BOOK	
NO.	
STRUCTURE NOTATIONS CHKD	



1:16:32 PM
 11/29/2011 11:16:32 PM
 \$FILE\$