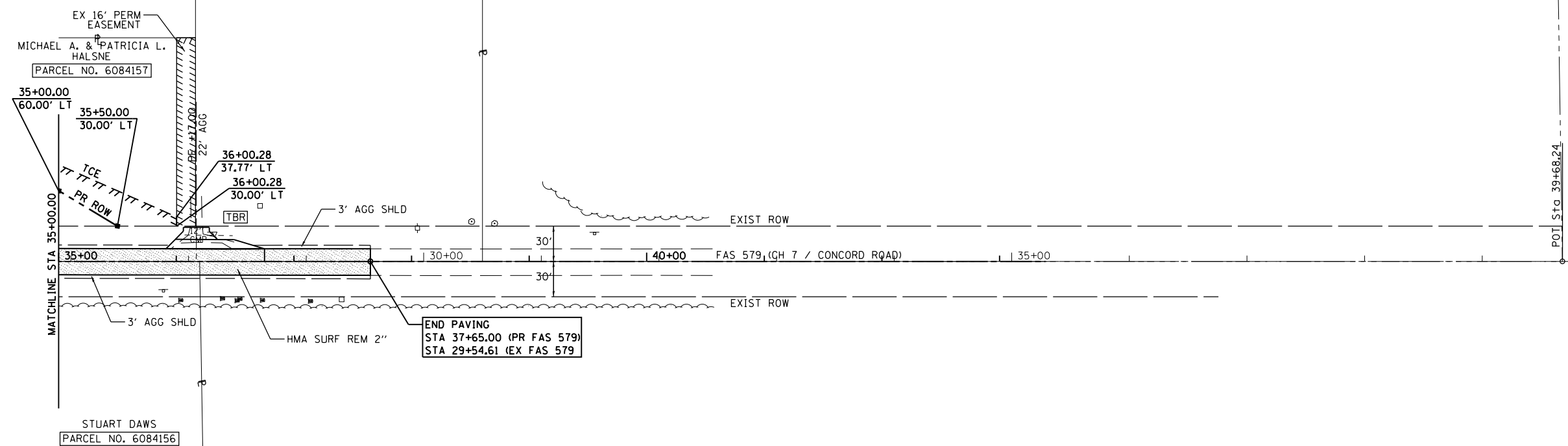


F.A.P. RTE.	SECTION	COUNTY	TOTAL SHEETS	SHEET NO.
310	69-3(3HB)	MORGAN	793	175
STA.		TO STA.		
FED. ROAD DIST. NO.	ILLINOIS	FED. AID PROJECT		

PLAN	SURVEYED	BY	DATE
	PLOTTED		
	CHECKED		
	BY		
	NO. OF WAY CHECKED		
	CADD FILE NAME		

PROFILE	SURVEYED	BY	DATE
	PLOTTED		
	CHECKED		
	BY		
	STRUCTURE NOTATIONS CHKD		

11:17:16 PM
M:\29-2011-011716PM
\$FILE\$



END PAVING
STA 37+65.00 (PR FAS 579)
STA 29+54.61 (EX FAS 579)

POT STA 39+68.24

