

F.A.P. RTE.	SECTION	COUNTY	TOTAL SHEETS	SHEET NO.
310	69-3(3HB)	MORGAN	793	176

SEC 7, T 15 N, R 11 W, 3rd PM

EXIST. CURVE 13
 PI STA. = 775+28.87
 $\Delta = 10^\circ 17' 12''$ (RT)
 $D = 1^\circ 00' 00''$
 $R = 5,729.58'$
 $T = 515.72'$
 $L = 1,028.67'$
 $E = 23.16'$
 $e = 0.033$
 P.C. STA. = 770+13.15
 P.T. STA. = 780+41.82
 S.E. TRANSITION:
 STA. 768+19 TO STA. 770+84
 STA. 779+71 TO STA. 782+36

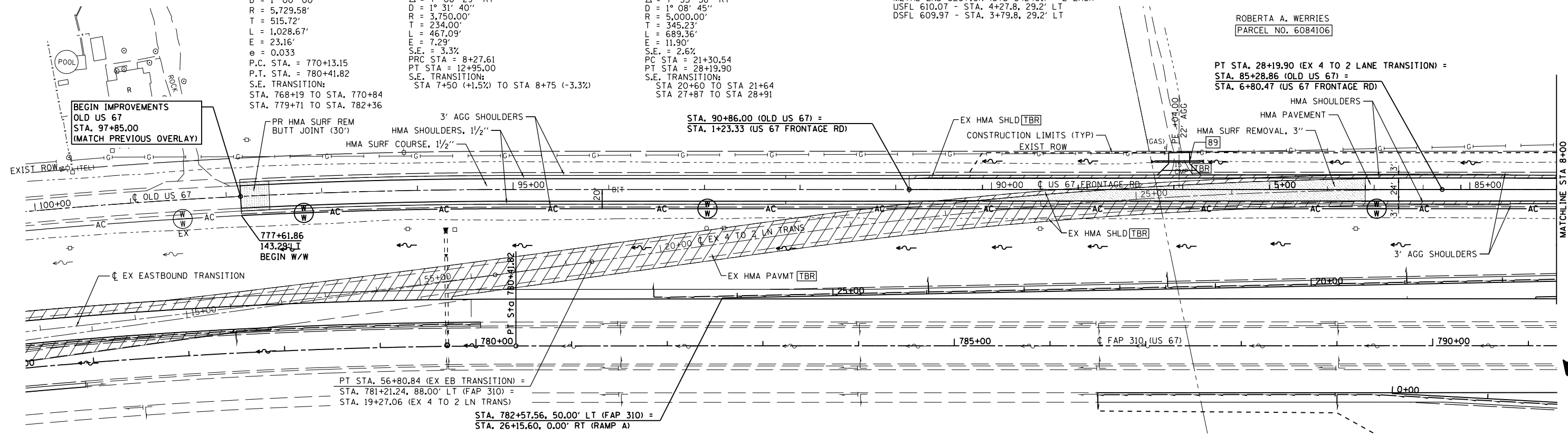
EX 4 TO 2 LANE TRANS CURVE #2 DATA
 PI STA = 10+61.61
 $\Delta = 7^\circ 08' 29''$ RT
 $D = 1^\circ 31' 40''$
 $R = 3,750.00'$
 $T = 234.00'$
 $L = 467.09'$
 $E = 7.29'$
 $S.E. = 3.3\%$
 PRC STA = 8+27.61
 PT STA = 12+95.00
 S.E. TRANSITION:
 STA 7+50 (+1.5%) TO STA 8+75 (-3.3%)

EX 4 TO 2 LANE TRANS CURVE #3 DATA
 PI STA = 24+75.77
 $\Delta = 7^\circ 53' 58''$ RT
 $D = 1^\circ 08' 45''$
 $R = 5,000.00'$
 $T = 345.23'$
 $L = 689.36'$
 $E = 11.90'$
 $S.E. = 2.6\%$
 PC STA = 21+30.54
 PT STA = 28+19.90
 S.E. TRANSITION:
 STA 20+60 TO STA 21+64
 STA 27+87 TO STA 28+91

89 STA 4+04.0 29.2' LT
 PIPE CULVERT, CLASS D, TYPE 1 -18"Ø - x 48'
 METAL END SECTION (STD 542401) - 2 EACH
 USFL 610.07 - STA. 4+27.8, 29.2' LT
 DSFL 609.97 - STA. 3+79.8, 29.2' LT

ROBERTA A. WERRIES
 PARCEL NO. 6084106

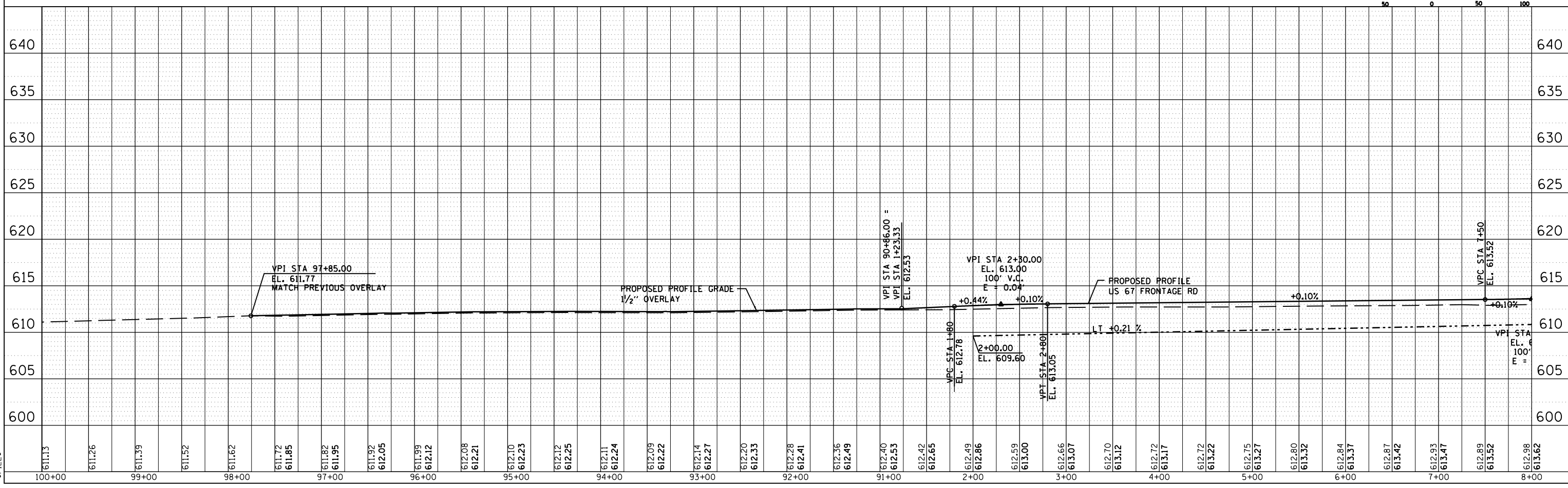
PT STA. 28+19.90 (EX 4 TO 2 LANE TRANSITION) =
 STA. 85+28.86 (OLD US 67) =
 STA. 6+80.47 (US 67 FRONTAGE RD)



1:17:23 PM
 1:17:23 PM
 1:17:23 PM

PLAN	DATE	BY
SURVEYED		
PLOTTED		
CHECKED		
NO. OF WAY CHECKED		
CADD FILE NAME		

PROFILE	DATE	BY
SURVEYED		
PLOTTED		
CHECKED		
NO. OF WAY CHECKED		
STRUCTURE NOTATIONS CHKD		



SECTION 69-3(3HB)

MORGAN COUNTY