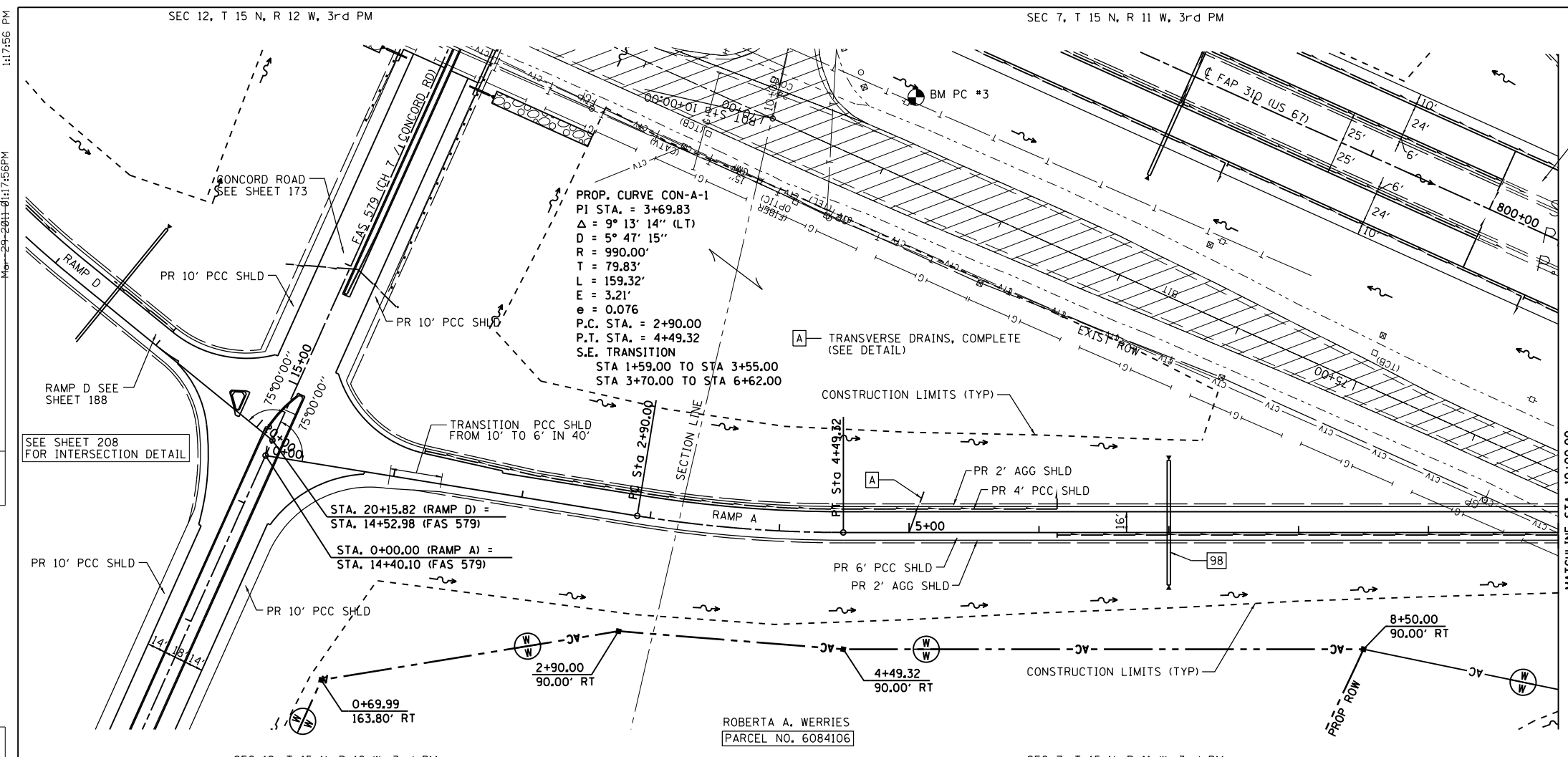
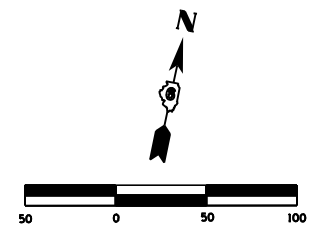
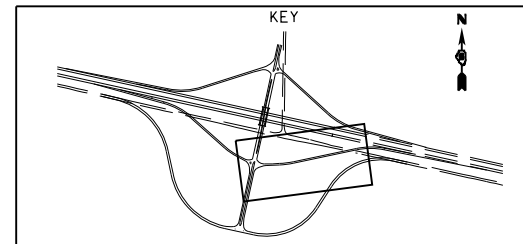


F.A.P. RTE.	SECTION	COUNTY	TOTAL SHEETS	SHEET NO.
310	69-3(3HB)	MORGAN	793	181
STA.		TO STA.		
FED. ROAD DIST. NO.		ILLINOIS FED. AID PROJECT		

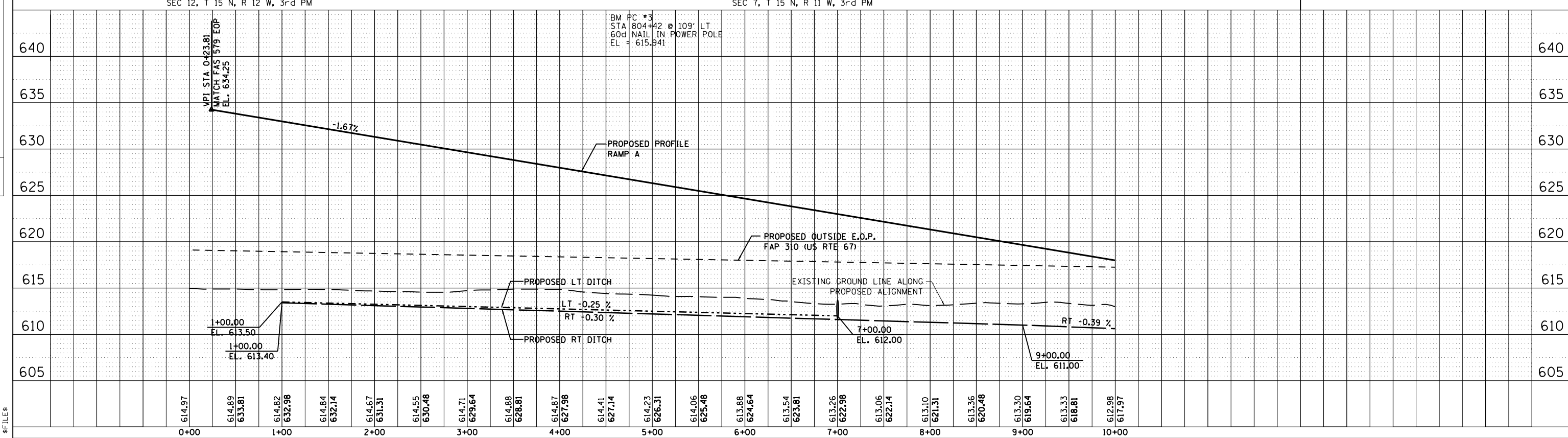


98 STA. 7+00.00  
 PRECAST REINF CONC END SECTION 24"Ø, STD (542301)  
 PIPE CULVERT, CLASS A, TYPE 2, 24"Ø, 96'  
 PRECAST REINF CONC END SECTION 24"Ø, STD (542301)  
 USFL STA. 7+00.0, 55.5' LT, EL 611.97  
 DSFL STA. 7+00.0, 40.5' RT, EL 611.63  
 TRENCH BACKFILL = 7.3 CU YD



PLAN	SURVEYED	BY	DATE
	PLOTTED		
	CHECKED		
	NO. OF WAY CHECKED		
	CADD FILE NAME		

PROFILE	SURVEYED	BY	DATE
	PLOTTED		
	CHECKED		
	NO. OF WAY CHECKED		
	STRUCTURE NOTATIONS CHKD		



BM PC #3  
 STA 804+42 @ 109' LT  
 60d NAIL IN POWER POLE  
 EL = 615.941

ROBERTA A. WERRIES  
 PARCEL NO. 6084106

\$FILES