

F.A.P. RTE.	SECTION	COUNTY	TOTAL SHEETS	SHEET NO.
310	69-3(3HB)	MORGAN	793	187
STA.		TO STA.		
FED. ROAD DIST. NO.	ILLINOIS	FED. AID PROJECT		

1:18:32 PM

1:18:32 PM

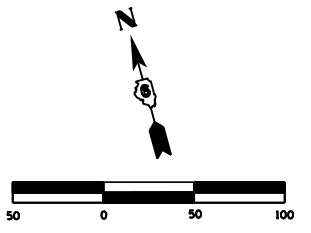
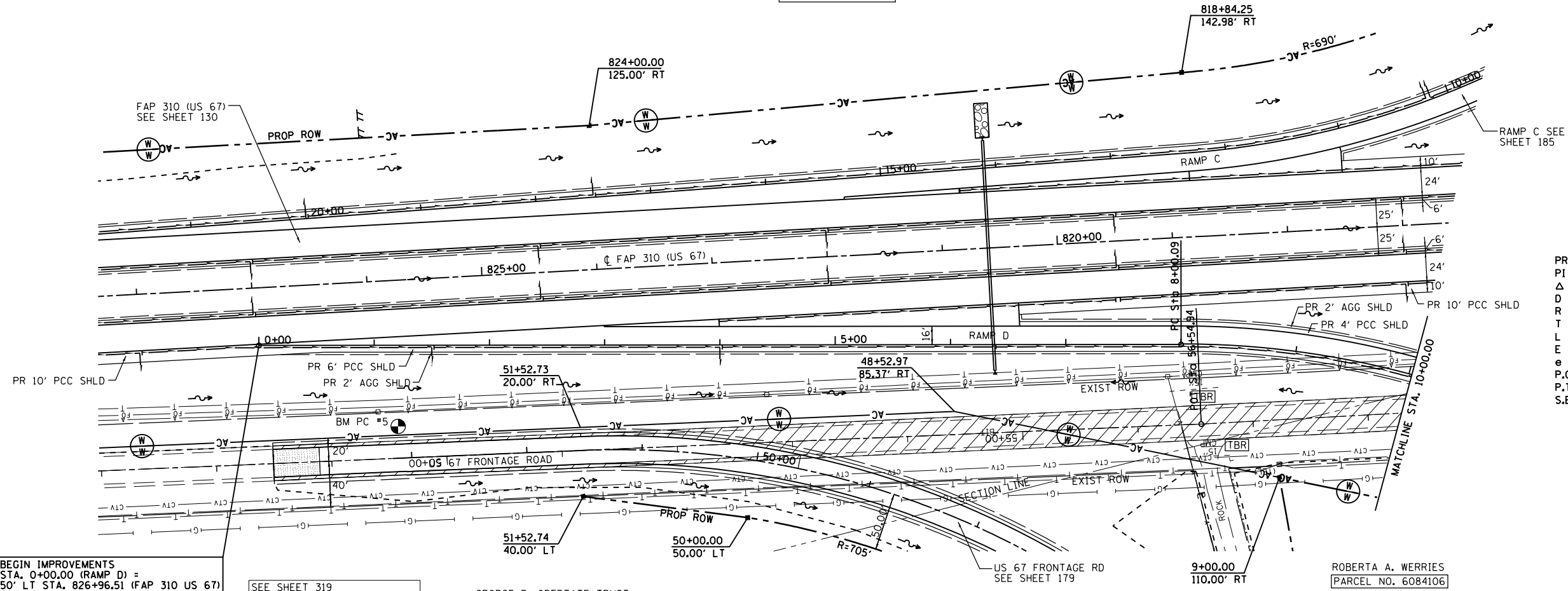
DATE

PLAN	DATE
SURVEYED	
PLOTTED	
CHECKED	
BY	
NO. OF WAY CHECKED	
CADD FILE NAME	

\$FILE\$

SEC 1, T 15 N, R 12 W, 3rd PM

GEORGE P. OBERTATE TRUST
PARCEL NO. 6084108



PROP. CURVE COND-1
 PI STA. = 9+76.57
 Δ = 26° 08' 47'' (RT)
 D = 7° 32' 20''
 R = 760.00'
 L = 346.82'
 E = 20.22'
 e = 0.080
 P.C. STA. = 8+00.09
 P.T. STA. = 11+46.91
 S.E. TRANSITION
 STA 6+60.11 TO STA 8+70.11
 STA 10+62.00 TO STA 13+66.00

BEGIN IMPROVEMENTS
 STA. 0+00.00 (RAMP D) =
 50' LT STA. 826+96.51 (FAP 310 US 67)
 (1' STUB)

SEE SHEET 319
 FOR RAMP D TERMINAL DETAIL

GEORGE P. OBERTATE TRUST
 PARCEL NO. 6084117

SEC 12, T 15 N, R 12 W, 3rd PM

