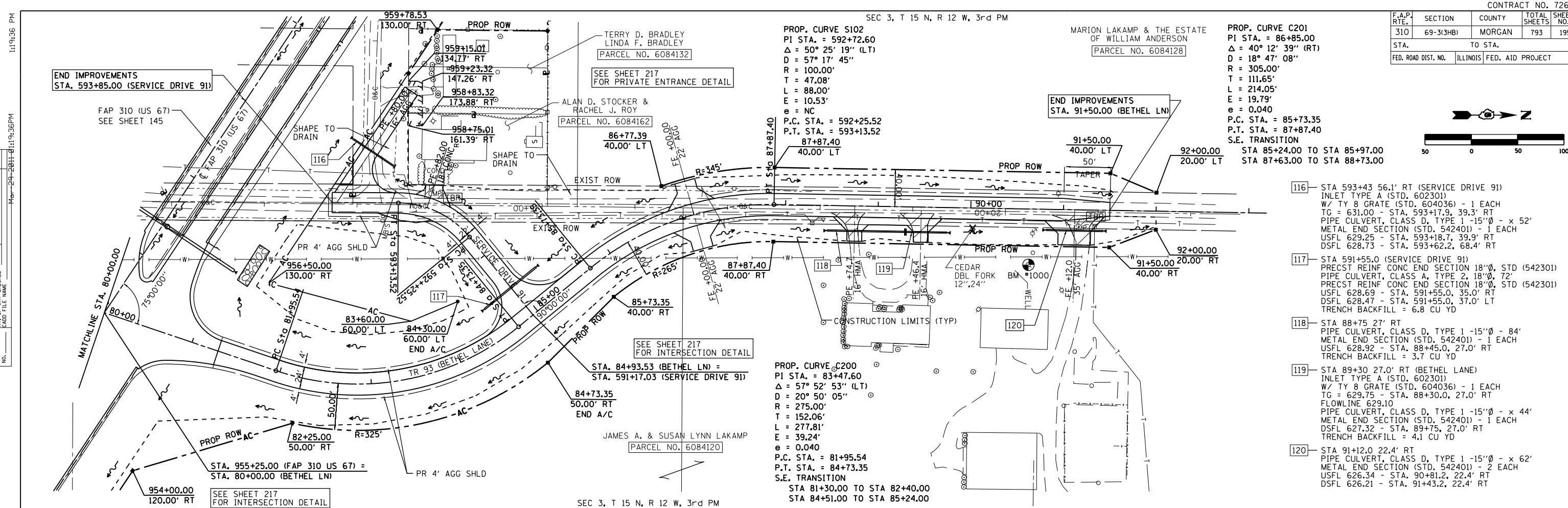


F.A.P. RTE.	SECTION	COUNTY	TOTAL SHEETS	SHEET NO.
310	69-3(3HB)	MORGAN	793	195
STA.		TO STA.		
FED. ROAD DIST. NO.		ILLINOIS	FED. AID PROJECT	

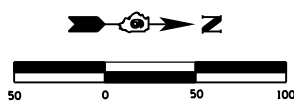


PROP. CURVE C201
 PI STA. = 86+85.00
 $\Delta = 40^\circ 12' 39''$ (RT)
 $D = 18^\circ 47' 08''$
 $R = 305.00'$
 $T = 111.65'$
 $L = 214.05'$
 $E = 19.79'$
 $e = 0.040$
 P.C. STA. = 85+73.35
 P.T. STA. = 87+87.40
 S.E. TRANSITION
 STA 85+24.00 TO STA 85+97.00
 STA 87+63.00 TO STA 88+73.00

PROP. CURVE S102
 PI STA. = 592+72.60
 $\Delta = 50^\circ 25' 19''$ (LT)
 $D = 57^\circ 17' 45''$
 $R = 100.00'$
 $T = 47.08'$
 $L = 88.00'$
 $E = 10.53'$
 $e = NC$
 P.C. STA. = 592+25.52
 P.T. STA. = 593+13.52
 87+87.40
 40.00' LT

PROP. CURVE C200
 PI STA. = 83+47.60
 $\Delta = 57^\circ 52' 53''$ (LT)
 $D = 20^\circ 50' 05''$
 $R = 275.00'$
 $T = 152.06'$
 $L = 277.81'$
 $E = 39.24'$
 $e = 0.040$
 P.C. STA. = 81+95.54
 P.T. STA. = 84+73.35
 S.E. TRANSITION
 STA 81+30.00 TO STA 82+40.00
 STA 84+51.00 TO STA 85+24.00

- 116 - STA 593+43 56.1' RT (SERVICE DRIVE 91)
 INLET TYPE A (STD. 602301)
 W/ TY 8 GRATE (STD. 604036) - 1 EACH
 TG = 631.00 - STA. 593+17.9, 39.3' RT
 PIPE CULVERT, CLASS D, TYPE 1 - 15"Ø - x 52'
 METAL END SECTION (STD. 542401) - 1 EACH
 USFL 629.25 - STA. 593+18.7, 39.9' RT
 DSFL 628.73 - STA. 593+62.2, 68.4' RT
- 117 - STA 591+55.0 (SERVICE DRIVE 91)
 PRECST REINF CONC END SECTION 18"Ø, STD (542301)
 PIPE CULVERT, CLASS A, TYPE 2, 18"Ø, 72'
 PRECST REINF CONC END SECTION 18"Ø, STD (542301)
 USFL 628.69 - STA. 591+55.0, 35.0' RT
 DSFL 628.47 - STA. 591+55.0, 37.0' LT
 TRENCH BACKFILL = 6.8 CU YD
- 118 - STA 88+75 27' RT
 PIPE CULVERT, CLASS D, TYPE 1 - 15"Ø - 84'
 METAL END SECTION (STD. 542401) - 1 EACH
 USFL 628.92 - STA. 88+45.0, 27.0' RT
 TRENCH BACKFILL = 3.7 CU YD
- 119 - STA 89+30 27.0' RT (BETHEL LANE)
 INLET TYPE A (STD. 602301)
 W/ TY 8 GRATE (STD. 604036) - 1 EACH
 TG = 629.75 - STA. 88+30.0, 27.0' RT
 FLOWLINE 629.10
 PIPE CULVERT, CLASS D, TYPE 1 - 15"Ø - x 44'
 METAL END SECTION (STD. 542401) - 1 EACH
 DSFL 627.32 - STA. 89+75, 27.0' RT
 TRENCH BACKFILL = 4.1 CU YD
- 120 - STA 91+12.0 22.4' RT
 PIPE CULVERT, CLASS D, TYPE 1 - 15"Ø - x 62'
 METAL END SECTION (STD. 542401) - 2 EACH
 USFL 626.34 - STA. 90+81.2, 22.4' RT
 DSFL 626.21 - STA. 91+43.2, 22.4' RT



PLAN	DATE

PROFILE	DATE

